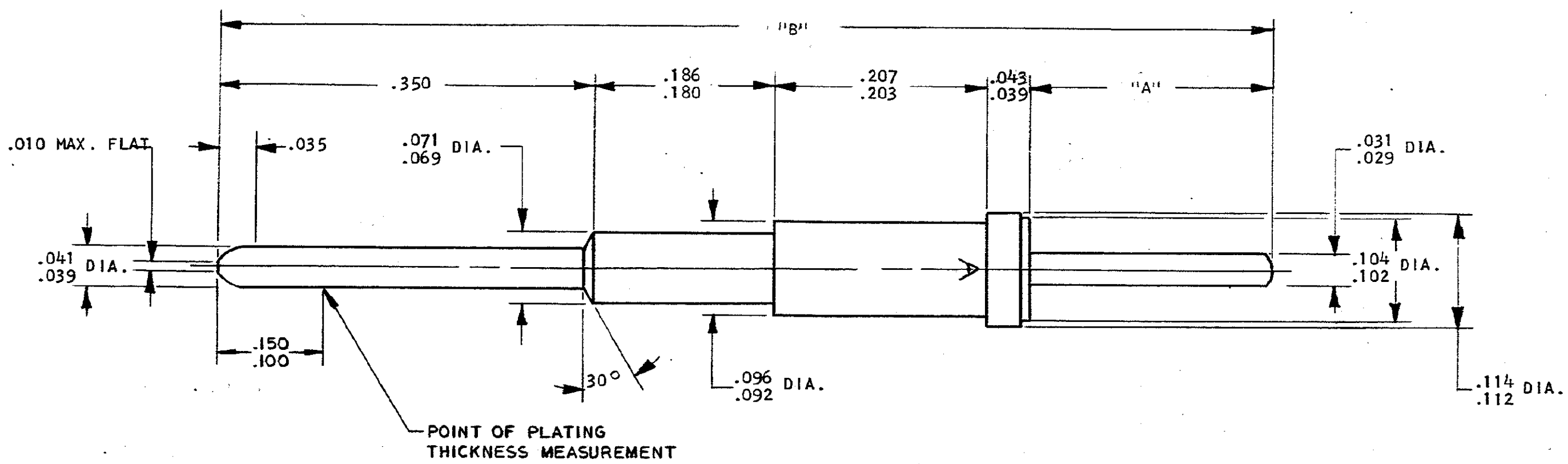


DRAWING MADE IN THIRD ANGLE PROJECTION

© COPYRIGHT 1981 BY AMP INCORPORATED, HARRISBURG, PA.  
 ALL INTERNATIONAL RIGHTS RESERVED. AMP INCORPORATED PRODUCTS  
 COVERED BY U. S. AND FOREIGN PATENTS AND/OR PATENTS PENDING.

- 208201-2 1. AS SHOWN.  
 2. "A" = .242/.230, "B" = 1.015 REF.
- 4 1. SAME AS -2 EXCEPT:  
 2. "A" = .412/.400, "B" = 1.185 REF.

		REVISIONS				
P	F	ZONE	LTR	DESCRIPTION	DATE	APPROVED
✓		0		RELEASED	AHIII 12/24/80	<i>[Signature]</i>
✓	✓	A		REVISED PER ECN J-342	AHIII 1/5/82	<i>[Signature]</i>
✓		B		REVISED PER ECN J-887	1/27/82	<i>[Signature]</i>



UNLESS OTHERWISE SPECIFIED DIMENSIONS ARE IN INCHES. TOLERANCES ON: DECIMALS ±.005 ANGLES ± 2°		CONTRACT NO 12/30/80		AMP INCORPORATED Harrisburg, Pa.	
MATERIAL LEADED COPPER		DR <i>[Signature]</i>		NAME PIN CONTACT, SIZE 20, ARINC 600 TYPE SPECIAL	
FINISH GOLD PER MIL-G-45204 OVER NICKEL PER QQ-N-290		CHK <i>[Signature]</i>		SIZE C	
		APPD <i>[Signature]</i>		IDENT NO 00779	
		DSGN APPD <i>[Signature]</i>		DRAWING NO 208201	
		OTHER APPD		SCALE #	
				SHEET OF 1	

CUST # 208201

CUSTOMER DRAWING

单击下面可查看定价，库存，交付和生命周期等信息

[>>TE Connectivity\(泰科\)](#)