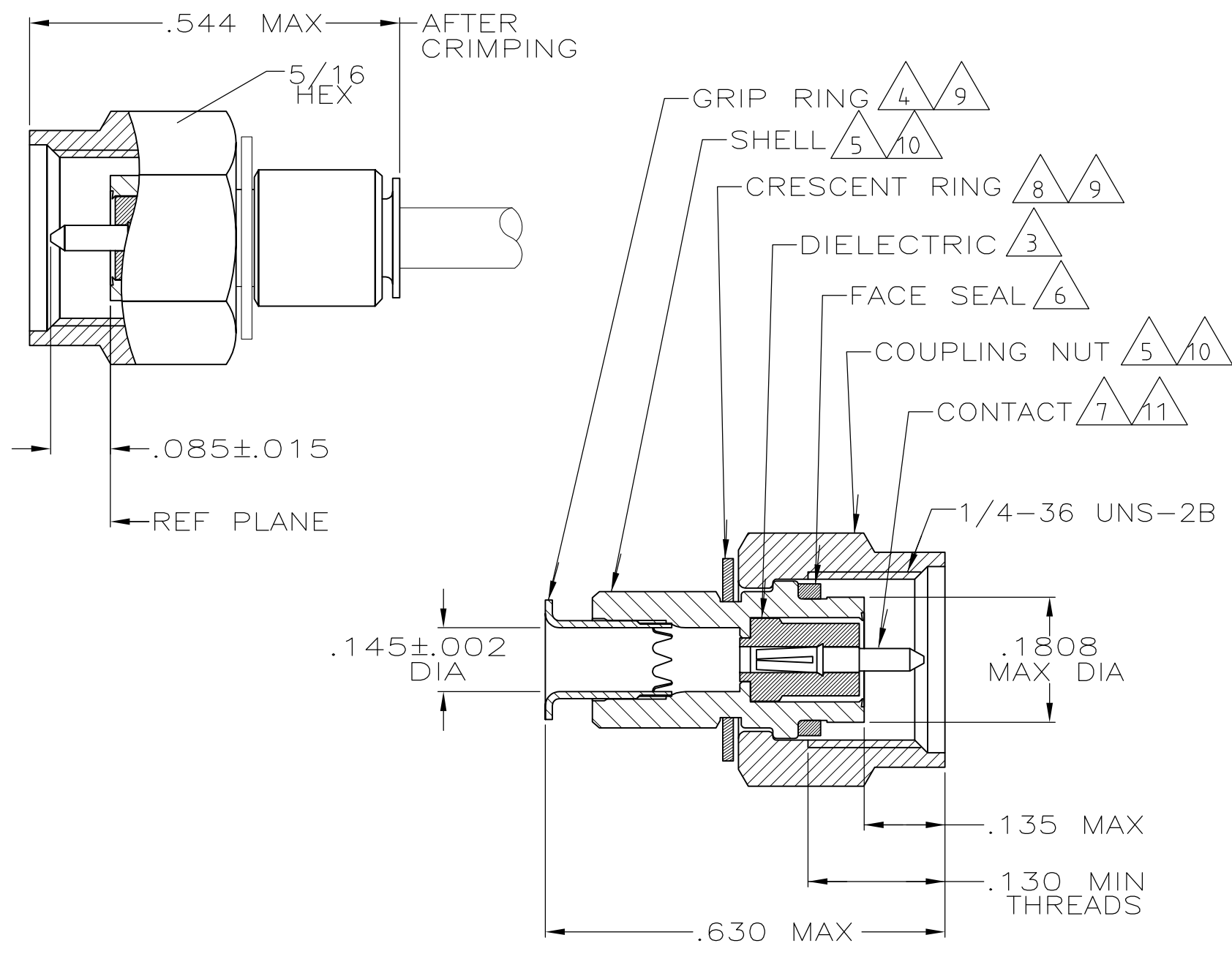
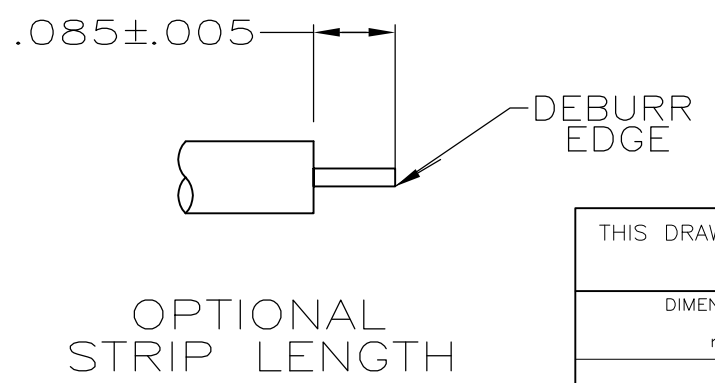
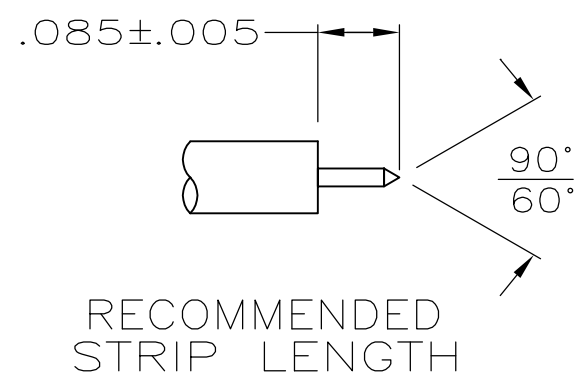


THIS DRAWING IS UNPUBLISHED. RELEASED FOR PUBLICATION
 © COPYRIGHT - By - ALL RIGHTS RESERVED.

LOC	DIST	REVISIONS					
		P	LTR	DESCRIPTION	DATE	DWN	APVD
-	-		K1	REVISED PER ECO-11-005030	11MAR11	RK	HMR



- FOR USE WITH: RG-402/U, .141 SEMI-RIGID CABLE
- SEE I.S. 6788
- PTFE PER ASTM D1710
- BRASS PER ASTM-B-36
- STAINLESS STEEL PER ASTM-A-582
- SILICONE RUBBER PER ZZ-R-765
- BERYLLIUM COPPER PER ASTM-B-197
- BERYLLIUM COPPER, ALLOY #25
- NICKEL PL PER QQ-N-290
- PASSIVATION PER ASTM A967
- GOLD PL PER MIL-G-45204
- 00779 M39012/79B3104
- .500 MIN LENGTH OF STRAIGHT CABLE REQUIRED TO APPLY THE CONNECTOR



227743-1
 PART NO

THIS DRAWING IS A CONTROLLED DOCUMENT.		DWN	K.HEILIG	8-12-87	TE Connectivity NAME PLUG, MIL-B, SERIES SMA	SIZE	CAGE CODE	DRAWING NO	RESTRICTED TO
DIMENSIONS: mm		CHK	M.SNEED	8-12-87					
TOLERANCES UNLESS OTHERWISE SPECIFIED:		APVD	M.WALMSLEY	8-12-87					
0 PLC ± - 1 PLC ± - 2 PLC ± - 3 PLC ± - 4 PLC ± - ANGLES ± -		PRODUCT SPEC	108-12055						
MATERIAL		WEIGHT		-		A3 00779		C-227743-1	
3 THRU 8 9 THRU 11		FINISH		THRU 11		CUSTOMER DRAWING		SCALE	5:1
						SHEET		1 OF 1	
								REV	
								K1	

单击下面可查看定价，库存，交付和生命周期等信息

[>>TE Connectivity\(泰科\)](#)