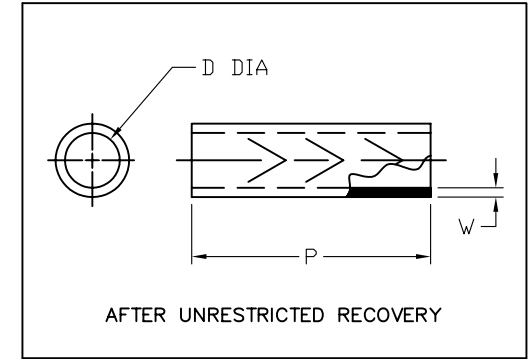
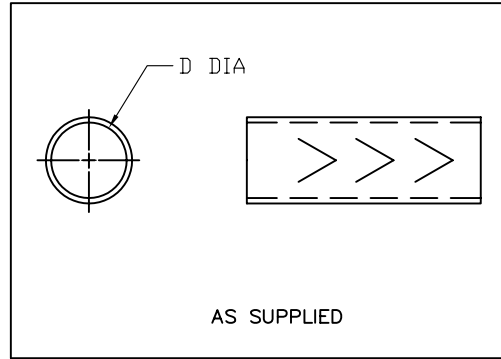


| REVISIONS | | |
|-----------|---------------|------------|
| LTR | DESCRIPTION | DATE |
| A | ECO-07-012324 | 06/20/2007 |

NOTES:

- APPLICABLE STANDARDS/SPECIFICATIONS:
 - ASME Y14.100
 - ANSI Y14.5M-1982.
- DIMENSIONS APPEARING IN TABLE ARE AS FOLLOWS:
 - AS SUPPLIED
 - AFTER UNRESTRICTED RECOVERY
- MATERIAL: RW-200
- COLOR: BLACK



| TYCO PART DESCRIPTION | UNISON PART NUMBER | D | | P ± .25 b | W REF b |
|-----------------------|--------------------|----------|----------|-----------------|---------------|
| | | MIN a | MAX b | | |
| RT-1145-0X-51-0 | 508564-1 | 1.000 | .250 | 1.250 | .035 |
| RT-1145-0X-52-0 | 508564-2 | 1.250 | .312 | 1.250 | .035 |
| RT-1145-0X-53-0 | 508564-3 | 1.500 | .375 | 1.250 | .038 |
| RT-1145-0X-57-0 | 508564-4 | 1.750 | .375 | 1.250 | .038 |
| RT-1145-0X-54-0 | 508564-5 | 2.000 | .500 | 1.250 | .044 |
| RT-1145-0X-55-0 | 508564-6 | 2.375 | .625 | 1.250 | .049 |
| RT-1145-0X-56-0 | 508564-7 | 2.675 | .750 | 1.250 | .055 |

CUSTOMER DRAWING

| | | | |
|--|------------------|---|---|
| UNLESS OTHERWISE SPECIFIED DIMENSIONS ARE INCHES. METRIC DIMENSIONS ARE IN BRACKETS. DECIMAL TOLERANCES .XXX ± 0.005 [0.13 mm] .XX ± 0.01 [0.25 mm] .X ± 0.1 [0.50 mm] ANGLE TOLERANCE .X ± 1 DEG. | DRAWN UNGUYEN | DATE 06/20/2007 | Raychem Molded Parts 305 Constitution Dr Menlo Park, CA 94025 |
| | RPN N/A | TITLE TUBING, SHRINK, OVER-EXPANDED, ARROW MARKED | |
| THIRD ANGLE PROJECTION | | SIZE B | CODE IDENT. NO. 06090 |
| © 2007 Tyco Electronics Corporation. All rights reserved. | | DWG. NO. RT-1145-0X-5X-0 | |
| DO NOT SCALE THIS DRAWING | | SHEET 1 OF 1 | |

If this document is printed it becomes uncontrolled. Check for the latest revision

单击下面可查看定价，库存，交付和生命周期等信息

[>>TE Connectivity\(泰科\)](#)