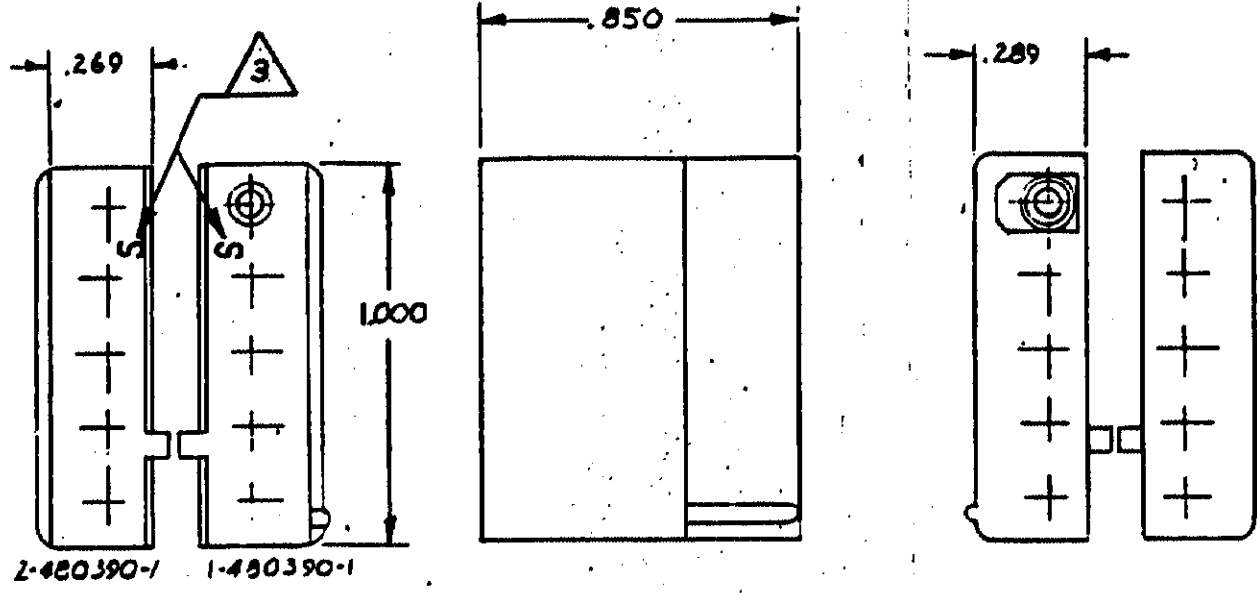


NUMBER
480390

WHS CP-50586




- 1. ACCEPTS MATE-N-LOK SOCKETS.
- 2. TO BE USED WITH CAP 480389.

△ MATERIAL - NYLON, 94-HB. BLACK. PARTS MARKED WITH THE LETTER "S" IN THIS AREA REPRESENTS NYLON 4/6, UL 94V-2, BLACK.

△ 1	2-480390-1
△ 3	1-480390-1
MATERIAL	PART NO.

DIMENSIONS IN INCHES. DO NOT SCALE PRINT.

				©1965 BY AMP INCORPORATED. ALL RIGHTS RESERVED. AMP PRODUCTS COVERED BY PATENTS AND/OR PATENTS PENDING.		CUSTOMER COPY REFERENCE ONLY				
				MATERIAL AND FINISH		 AMP INCORPORATED HARRISBURG, PENNA.				
E	REV PER ECN CM-3827	NJG	RS	7-21-62	CLASS .086 SOCKET HOUSING					
D	REVISED PER CM-1895	PH	RS	11-10-62	TYPE MOTOR MOUNT					
LTR	REVISION RECORD	DR	CHK	DATE	TOLERANCE EXCEPT AS NOTED ± .015	SCALE NTS	LOC CM	NO A	NO 480390	E
DR	10/11/65	CF			NAME 5 CIRCUIT MATE-N-LOK™ PLUG					
CHK	10/15/65	AP								

单击下面可查看定价，库存，交付和生命周期等信息

[>>TE Connectivity\(泰科\)](#)