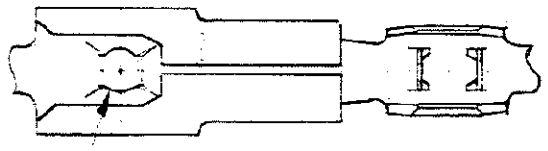
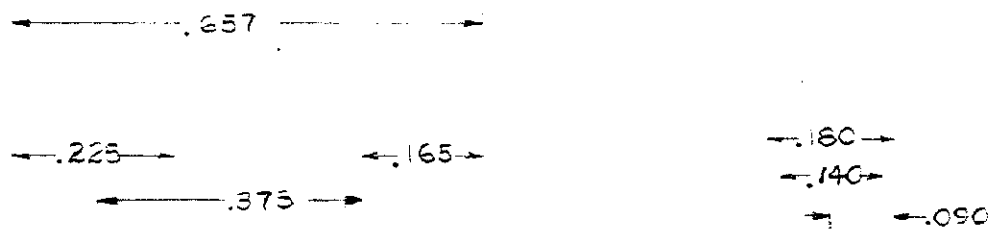
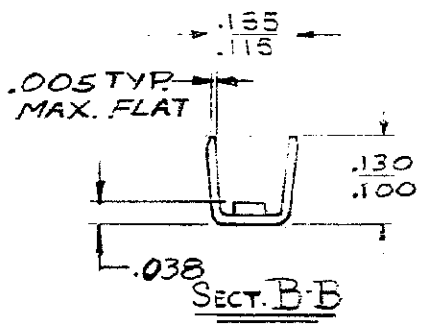
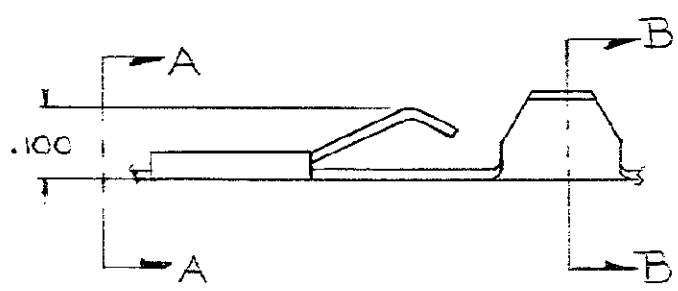


NUMBER 61462



VIEW A-A

-PRESS FIT ON .062 DIA PLASTIC STUD



CONTINUOUS STRIP ON REELS

PART No
61462-1

WAS CP80378

DIMENSIONS IN INCHES, DO NOT SCALE PRINT.

THIS DRAWING IS THE PROPERTY OF AMP INCORPORATED. IT IS TO BE KEPT IN CONFIDENCE AND NOT TO BE REPRODUCED OR COPIED IN ANY MANNER WITHOUT WRITTEN PERMISSION OF AMP INCORPORATED.

©1968 BY AMP INCORPORATED. ALL RIGHTS RESERVED. AMP PRODUCTS COVERED BY PATENTS AND/OR PATENTS PENDING.

CUSTOMER COPY
REFERENCE ONLY

D	REVISED	A7	D.S.	4-23 80
C	REVISED	A	10/23	10/29/69
B	RELEASED			10/23/68
A	REMOVED FROM END			10/23/68
LTR	REVISION RECORD	ECN	DR	DATE
DR	Steve Sawyer 9/10/68	DE	Jim Pritulsky	9-10-68
CHK	Len Pritulsky 9/10/68	APP		

MATERIAL AND FINISH
.012 Phos. BE. - NONE
Per ASTM B103
WIRE RANGE INSULATION
.22 FLAT .085 THK.

AMP AMP INCORPORATED
HARRISBURG, PENNA.

CLASS _____

TYPE _____

TOLERANCE EXCEPT AS NOTED ± .015 ± 1° 0' SCALE 4X1 LOC **A** NO **61462** REV **D**

NAME **TERMINAL-SPECIAL**

PRINTED 50

单击下面可查看定价，库存，交付和生命周期等信息

[>>TE Connectivity\(泰科\)](#)