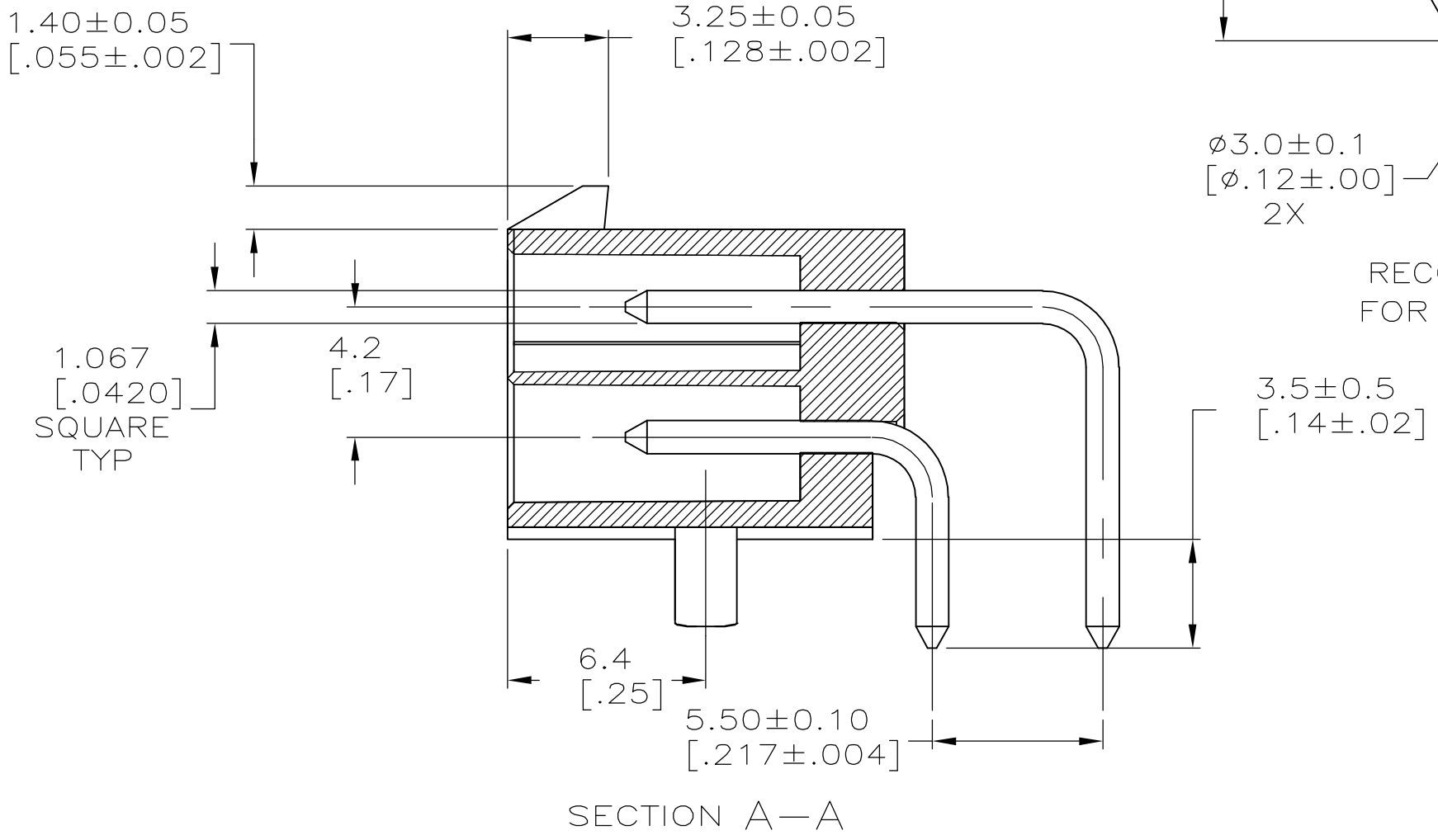
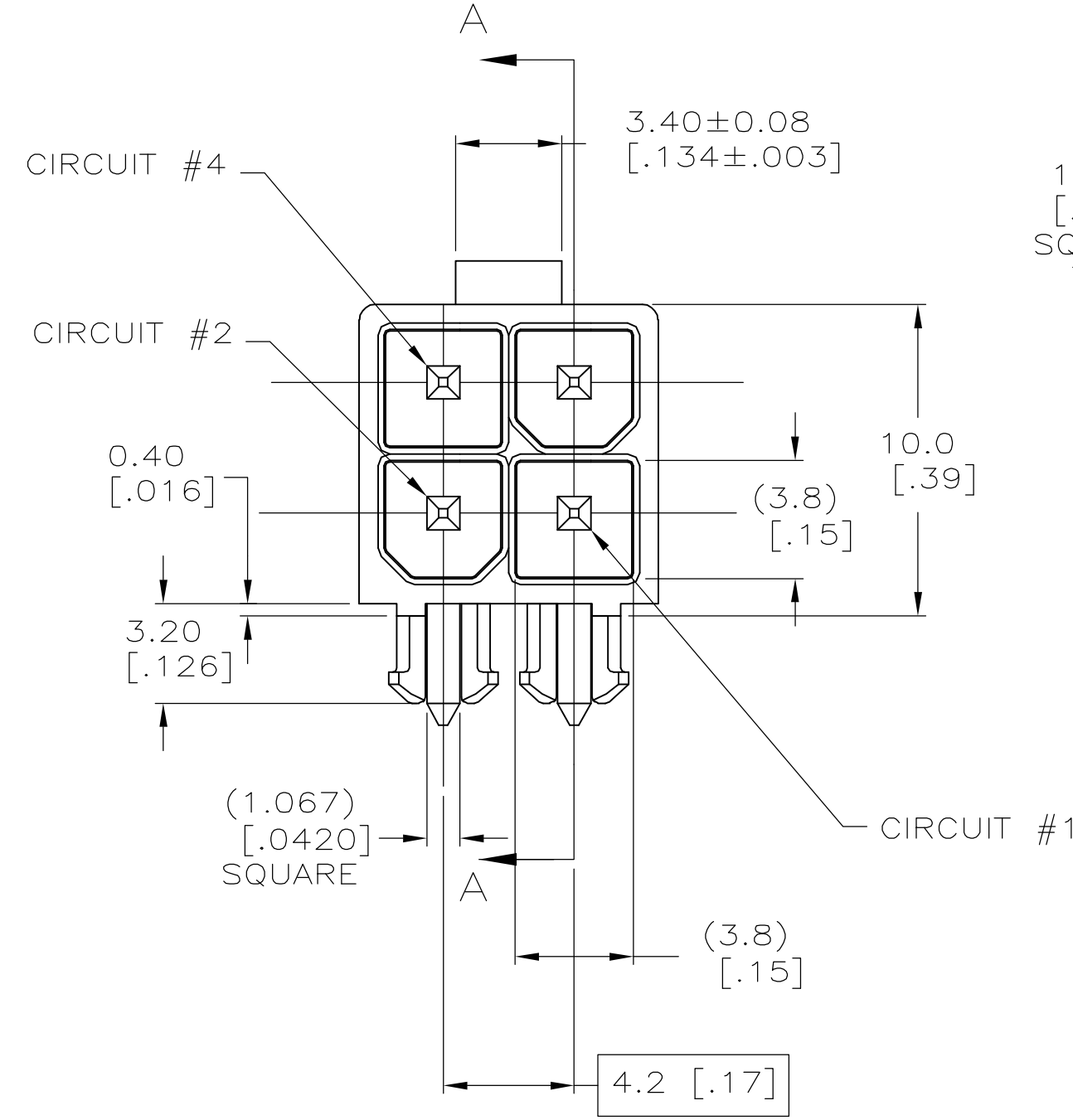
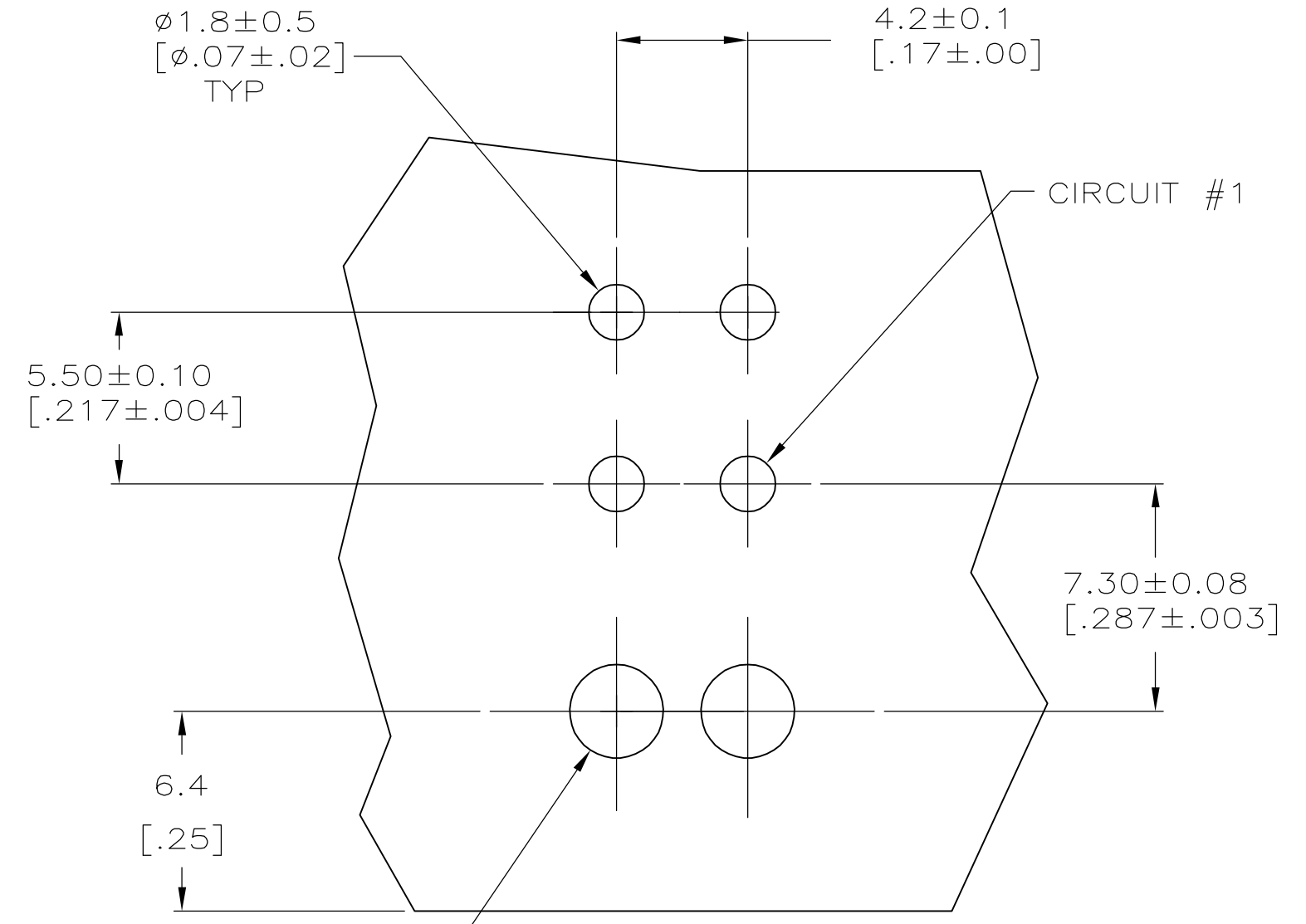
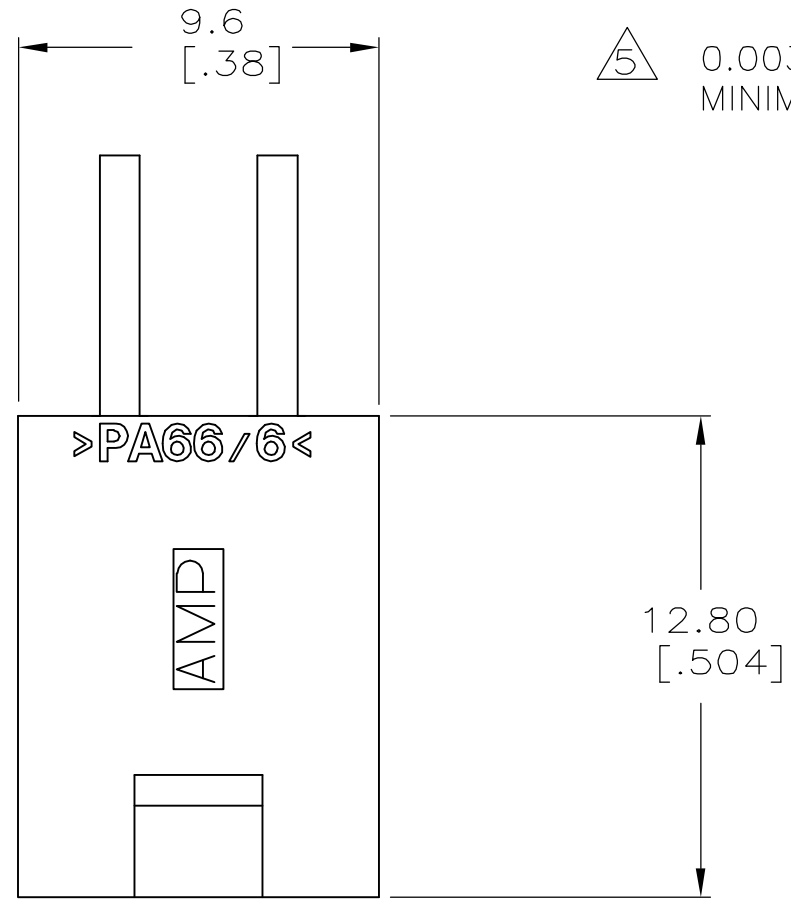


THIS DRAWING IS UNPUBLISHED. RELEASED FOR PUBLICATION
 © COPYRIGHT BY TYCO ELECTRONICS CORPORATION. ALL RIGHTS RESERVED.

| LOC | DIST | REVISIONS | | | |
|-----|------|-------------|---------------------------|---------|-------|
| P | LTR | DESCRIPTION | DATE | DWN | APVD |
| CM | 00 | D | REVISED PER ECO-06-014735 | 10NOV06 | KW DC |

- 1 MATERIAL: HOUSING - NYLON, UL94V-2 (COLOR - NATURAL).
PIN - 1.067mm² [.0017in²] COPPER ALLOY.
- 2 PINS TO COMPLY WITH SOLDERABILITY SPEC 109-11-3.
- 3 0.00381 [.000150] MINIMUM TIN LEAD OVER 0.00127 [.000050] MINIMUM NICKEL, ENTIRE LENGTH OF PIN.
- 4 NOTE DELETED.
- 5 0.00381 [.000150] MINIMUM TIN OVER 0.00127 [.000050] MINIMUM NICKEL, ENTIRE LENGTH OF PIN.



RECOMMENDED MOUNTING HOLE PATTERN FOR 1.78 [.070] MAX THICK P.C. BOARD COMPONENT SIDE SHOWN

SUPERSEDED BY 1-794508-1

| | | | | |
|----------|---|---------|---|------------|
| 1 | 5 | 1 | 1 | 1-794508-1 |
| 1 | 3 | 1 | 1 | 794508-1 |
| MATERIAL | | FINISH | | ASSEMBLY |
| PIN | | HOUSING | | |

METRIC

THIS DRAWING IS A CONTROLLED DOCUMENT.

| | | | |
|----------------------------|--|------------------------------|---|
| DIMENSIONS: mm [INCHES] | TOLERANCES UNLESS OTHERWISE SPECIFIED: | DWN S. HOOVER 02-MAR-2005 | Tyco Electronics Corporation Harrisburg, Pa 17105-3608 |
| 0 PLC ± | ± 0.2 [.01] | CHK D. COLEY 02-MAR-2005 | |
| 1 PLC ± | ± 0.13 [.005] | APVD D. COLEY 02-MAR-2005 | NAME |
| 2 PLC ± | ± 0.30 [0.012] | PRODUCT SPEC | 108-1646 |
| 3 PLC ± | ± 0.30 [0.012] | APPLICATION SPEC | 114-6067 |
| 4 PLC ± | ± 0.30 [0.012] | WEIGHT | A2 00779 G=794508 |
| ANGLES ± | ± 0' 30" | FINISH | CUSTOMER DRAWING |

ASSEMBLY, HEADER, RIGHT ANGLE, 4 POSITION, W/PEGS, 94V-2, AMP-DUAC™ POWER CONNECTOR

SCALE 5:1 SHEET 1 OF 1 REV D

单击下面可查看定价，库存，交付和生命周期等信息

[>>TE Connectivity\(泰科\)](#)