

**METPRIO**  
DIMENSIONS LISTED IN mm [ INCHES ]

LOC	DIST	REV	DATE	APPD
G	14			

REV	DATE	APPD
REVIS	0202/17/04	
REVISED PER	0720-0230-93	

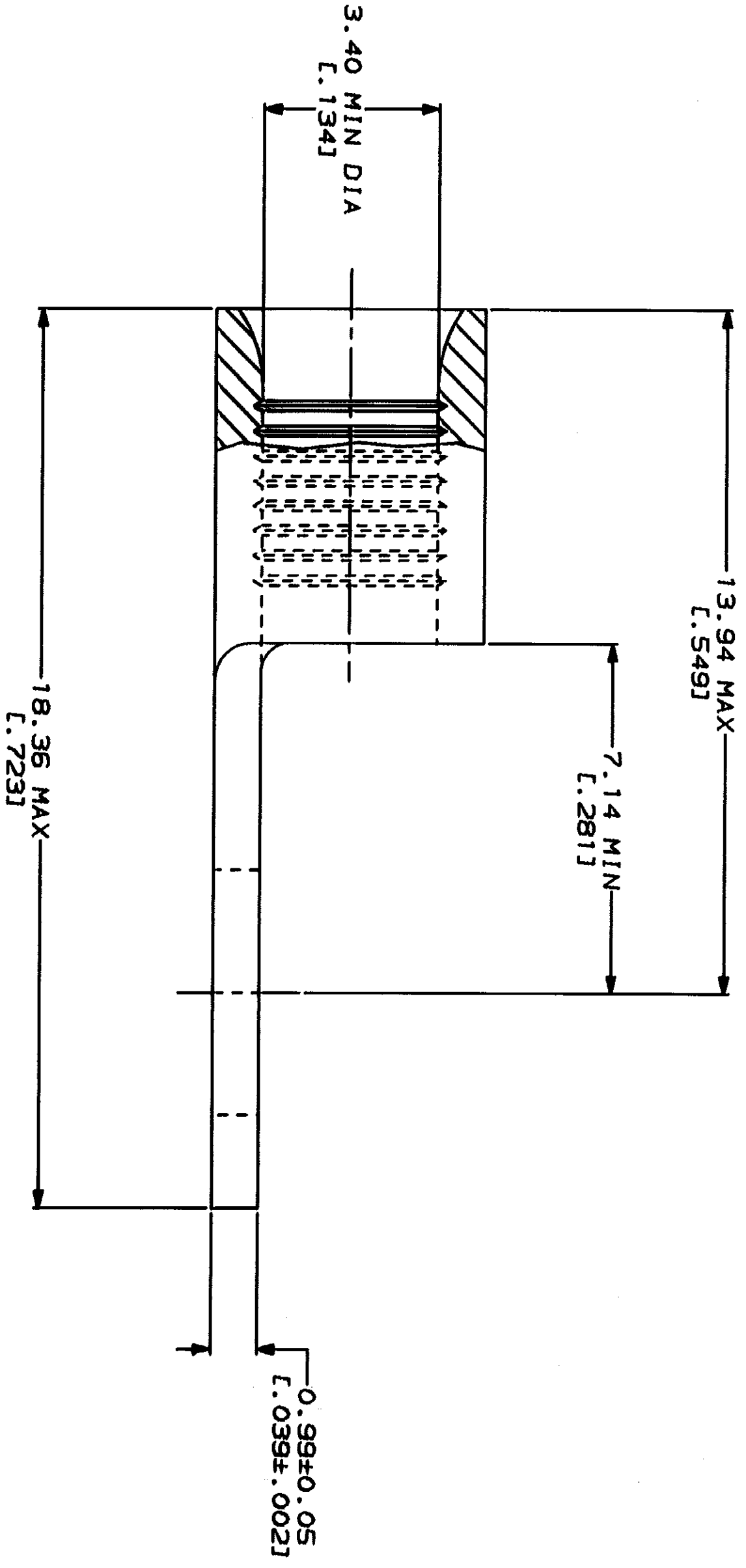
  

WIRE RANGE	E13288 Listed
12-10 AWG STRANDED	12-10 AWG STRANDED

WIRE RANGE	MILITARY P/N AND CLASS
12-10 AWG STRANDED	LR7189 Certified
	NOT CERTIFIED
	NOT APPLICABLE

△ STAMP AMP 12-10\* APPROX AS SHOWN



AMP INCORPORATED  
CUSTOMER SERVICE SYSTEMS

FOR ADDITIONAL PRODUCT INFORMATION OR COPIES OF DRAWINGS AND TECHNICAL DOCUMENTS  
1-800-522-6752

FOR APPLICATION TOOLING INFORMATION  
1-800-722-1111

FOR ORDER ENTRY  
1-800-526-5142

MAX RECOMMENDED OPERATING TEMPERATURE: 170°C MAX

VOLTAGE RATING: NOT APPLICABLE

WIRE CROSS SECTIONAL AREA RANGE: 2.62-6.64mm<sup>2</sup> [5.180-13.100] CIR MILS STRANDED

DO NOT SCALE PRINT. UNLESS SPECIFIED DIMENSIONS IN - FINISHES - TOLERANCES ON 1 2 PL DEC ± 3 PL DEC ± ANGLES MATERIAL

COPPER PER ASTM B-152 ANNEALED

FINISH: TIN PLATE  
0.00254L.0001001 MIN THK PER MIL-T-10727

DR 2-9-93 TA BRINKMAN  
CHK 2-9-93 DA PATTERSON  
APPO 2-9-93 DE MILLER  
APPO 2-9-93 J. HECKLEY  
PRODUCT SPEC

APPLICATION SPEC

WEIGHT

AMP Incorporated  
Harrisburg, PA 17105-3508

TERMINAL, RING TONGUE, BUDGET

SIZE CAGE CODE DRAWING NO  
C 00779 G-32882

32882  
PART NO

CUSTOMER DRAWING  
1 OF 1

单击下面可查看定价，库存，交付和生命周期等信息

[>>TE Connectivity\(泰科\)](#)