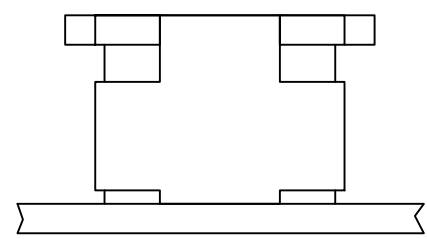
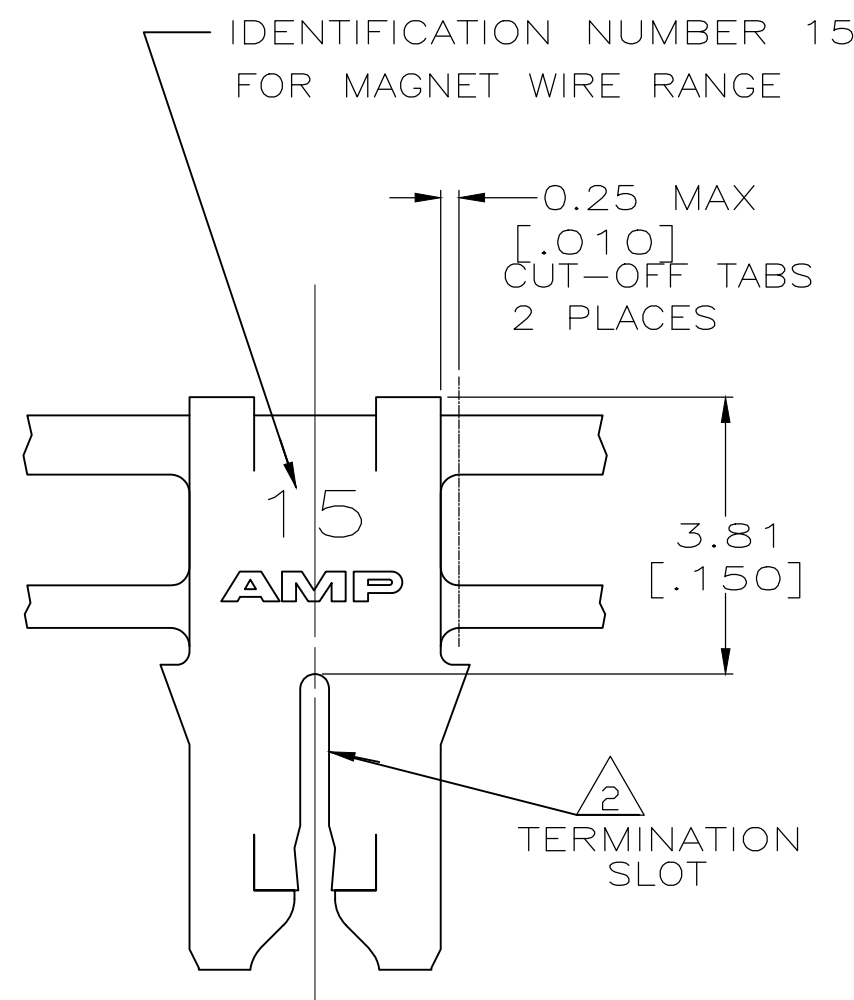
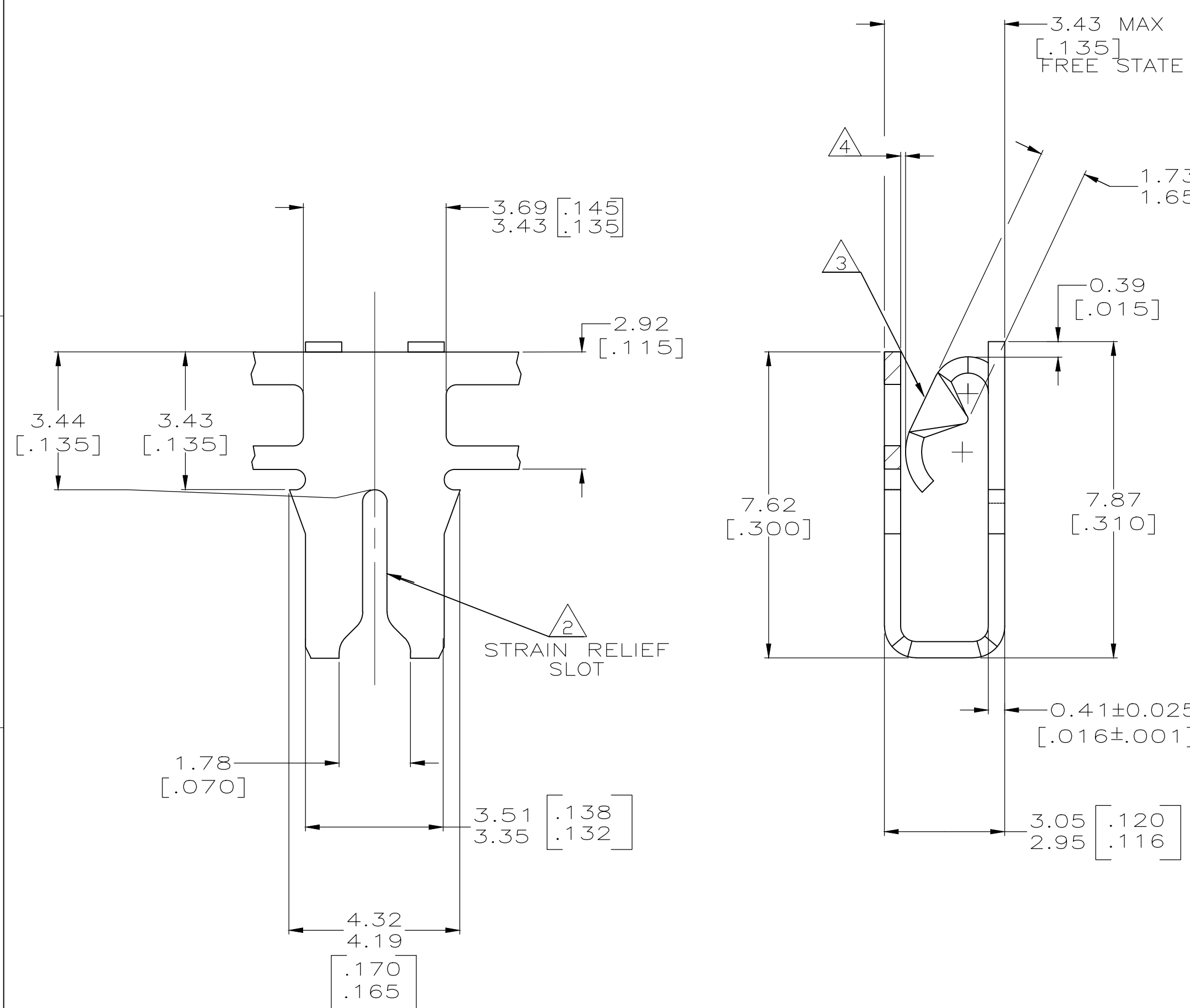


THIS DRAWING IS UNPUBLISHED. RELEASED FOR PUBLICATION
 © COPYRIGHT - By - ALL RIGHTS RESERVED.

LOC	DIST	REVISIONS			
P	LTR	DESCRIPTION	DATE	DWN	APVD
AF	50	C	REVISED PER ECR-18-009392	28MAR2019	BDA SV



- 1 CONTINUOUS STRIP ON REELS WITH TERMINALS LOCATED ON 5.59±0.08 [.220±0.003] CENTERS
- 2 SLOT ACCEPTS A 0.54-0.64mm [#23.5-#22] AWG COPPER MAGNET WIRE.
- 3 MATES WITH STANDARD MAG-MATE STYLED POKE-IN TAB TERMINAL.
- 4 WHEN FREE STATE IS COMPRESSED TO 3.23 [.127] DIMENSION GAP BETWEEN SPRING AND CARRIER IS TO BE 0.30 [.012] MAX.
- 5 0.0010 [.000040] MIN TIN
- 6 ANTI-FRETTING LUBRICANT APPLIED.
- 7 0.00382 [.000150] MIN SILVER PLATE OVER 0.00127 [.000050] MIN NICKEL UNDERPLATE.
- 8 PRELIMINARY - NOT FOR PRODUCTION.



FINISH	MATERIAL	PART NUMBER
7	4M BRASS	8 1217689-4
5 6	H04 PHOSPHOR BRONZE	8 1217689-3
5 6	4M BRASS	8 1217689-2
5	4M BRASS	1217689-1

THIS DRAWING IS A CONTROLLED DOCUMENT.

DWN SAMUEL D. WYNN 15OCT2001	 TE Connectivity	SPECIAL LEAF CONTACT, 300 SERIES MAG-MATE™		
CHK MICHAEL S. FEHER 17OCT2001		SIZE A2	CAGE CODE 00779	DRAWING NO. C=1217689
APVD KURT A. RANDOLPH 17OCT2001		RESTRICTED TO	-	
PRODUCT SPEC 108-2012		SCALE 10:1	SHEET 1 OF 1	REV C
APPLICATION SPEC 114-2046	CUSTOMER DRAWING			

单击下面可查看定价，库存，交付和生命周期等信息

[>>TE Connectivity\(泰科\)](#)