

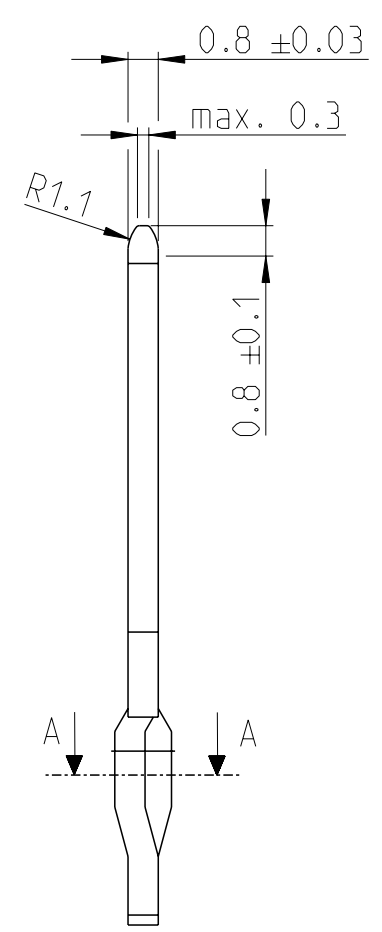
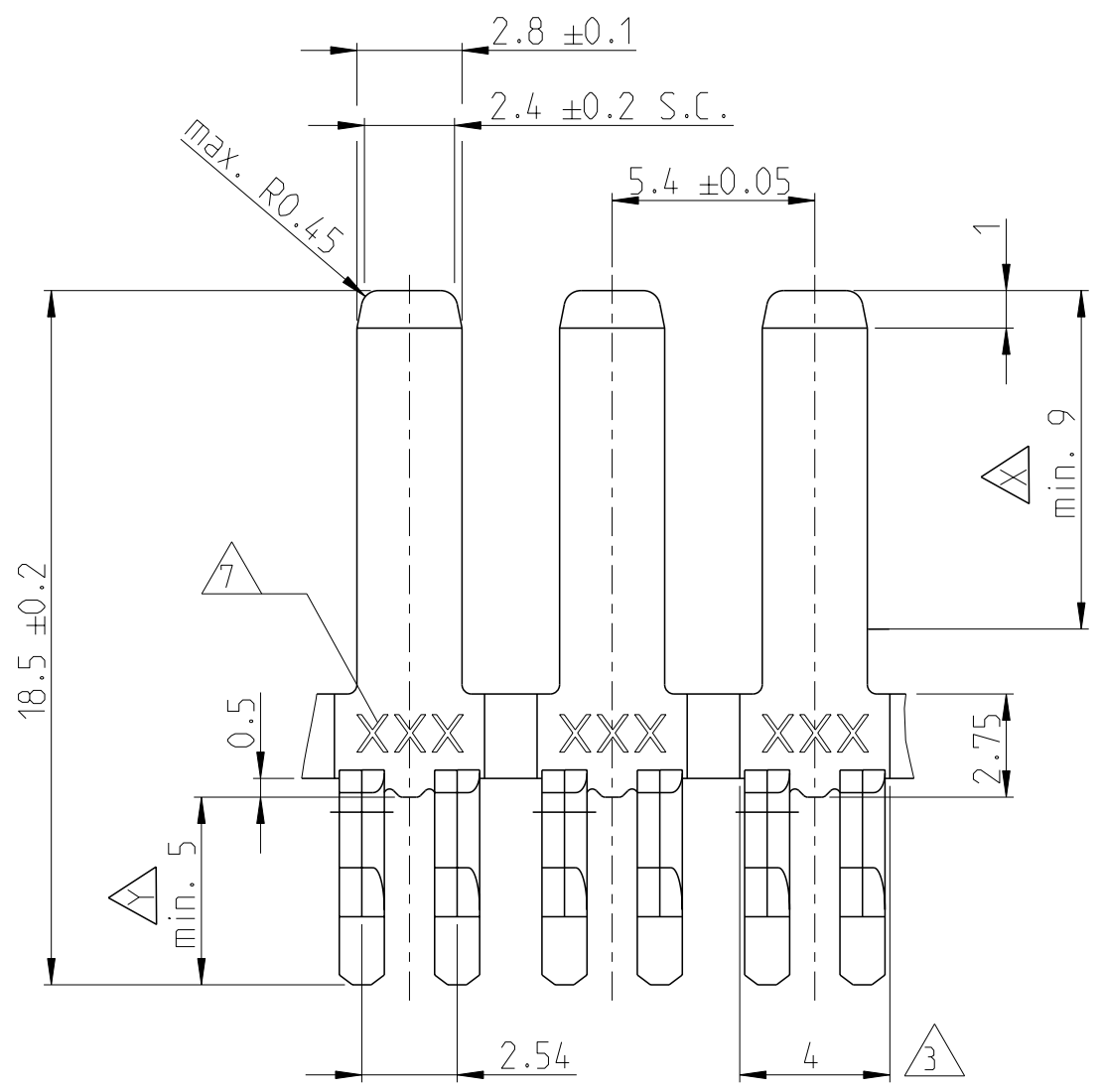
REVISIONS

P	LTR	DESCRIPTION	DATE	DWN	APVD
K3		ECR-05-011024	14SEP2005	ABR	M.B.
K4		338429-5 ADDED	20AUG2007	HAA	M.B.
K5		NOTE 6 ADDED	15JAN2008	HAA	A.Z.
K6		NOTE 8 ADDED	05JUN2018	FRAN	EDER

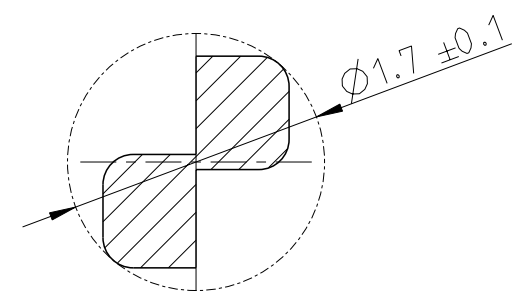
NOTES

Bemerkungen:

- ① PHOSPHORBRONZE # 4 HD
- ② 2.54-5.00 μm Sn OVER 1.25-2.00 μm NICKEL
- ③ CUT OFF WIDTH
- ④ PLATING: UNDERLAYER; 1.25 μm-2.00 μm NICKEL
ZONE X : 3 μm AG MIN.
ZONE Y ; 2.54 μm - 5.00 μm Sn
- ⑤ 1.50-3.30 μm Sn OVER 1.25-2.00 μm NICKEL
- ⑥ PANCAKEREEL PACKED WITH PE BAG.
WORKABILITY WITHIN SIX MONTHS BEGINNING WITH THE PRODUCTION DATE
- ⑦ ARTWORK LOGO
- ⑧ PLASTICREEL PACKED WITH PE BAG.
WORKABILITY WITHIN SIX MONTHS BEGINNING WITH THE PRODUCTION DATE



SECTION A-A
SCALE 20:1



P.C.B HOLE DIM. ACTION PIN
 DRILLED HOLE: 1.6±0.025mm
 FIN. HOLE: 1.39^{+0.15}_{-0.00} mm
 AFTER REFLOW: 1.37^{+0.15}_{-0.00} mm
 Cu-thks: 0.025 to 0.075 mm
 Sn-thks: 0.004 to 0.010 mm

PACKAGING	FINISH	MATERIAL	PARTNUMBER	REV
⑧	②	①	338429-6	A
⑥	⑤	①	338429-5	K
⑥	④	①	338429-3	K
⑥	②	①	338429-2	K

THIS DRAWING IS A CONTROLLED DOCUMENT.

DIMENSIONS:	TOLERANCES UNLESS OTHERWISE SPECIFIED:
mm	
	0 PLC ±
	1 PLC ±
	2 PLC ±
	3 PLC ±
	4 PLC ±
	ANGLES ±
MATERIAL	FINISH
-	-
-	-

DWN	J. Gibbels	08DEC1997
CHK	A. Bijnen	19JUL2001
APVD	A. Bijnen	19JUL2001
PRODUCT SPEC	-	-
APPLICATION SPEC	-	-
WEIGHT	-	-
CUSTOMER DRAWING		

TE TE Connectivity

NAME: 2.8x0.8mm TAB WITH ACTION PIN
(FOR 1.6-3.2mm PCB THICKNESS)

SIZE	CAGE CODE	DRAWING NO	RESTRICTED TO
A3	00779	C=338429	-

SCALE 5:1 SHEET 1 OF 1 REV K6

单击下面可查看定价，库存，交付和生命周期等信息

[>>TE Connectivity\(泰科\)](#)