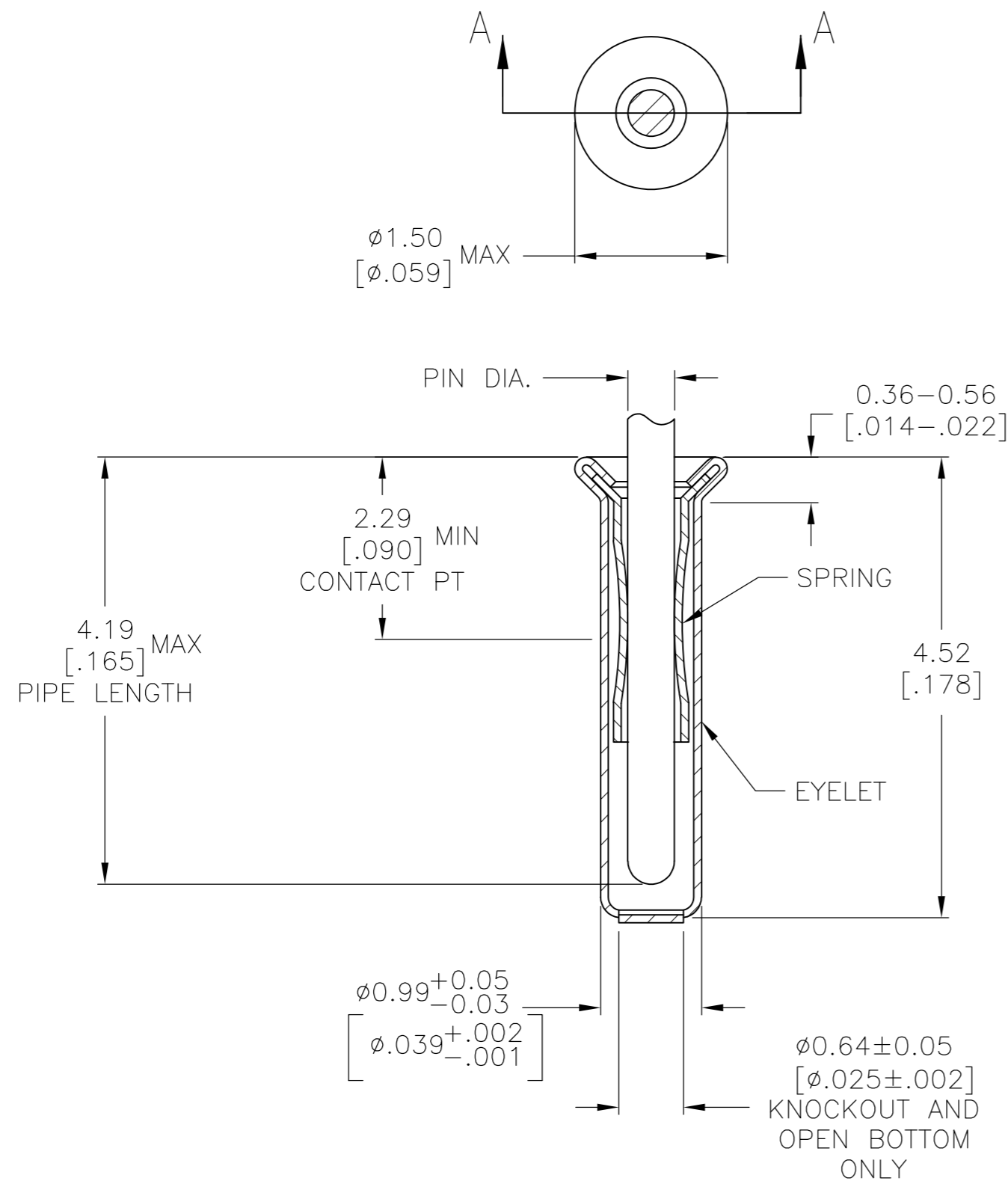


THIS DRAWING IS UNPUBLISHED. RELEASED FOR PUBLICATION
 © COPYRIGHT - By - ALL RIGHTS RESERVED.

LOC	DIST	REVISIONS					
FT	64	P	LTR	DESCRIPTION	DATE	DWN	APVD
		AA2		REVISED PER ECO-11-004835	11MAR11	RK	HMR



SECTION A-A

- 1. TIN PER MIL-T-10727 OR TIN LEAD .000254 [.000100] MIN THK.
- 2. GOLD PER MIL-G-45204, TYPE II, 0.00076 [.000030] MIN THK OVER NICKEL PER QQ-N-290 0.00028 [.000011] MIN THK ON CONTACT AREA.
- 3. GOLD FLASH PER MIL-G-45204, TYPE II, 0.13µm [.000005] MIN THK. OVER NICKEL PLATE PER QQ-N-290 0.51µm-1.52µm [.000020-.000060] EXT THK.
- 4. RECOMMENDED HOLE SIZE, PLATED OR UNPLATED:
 MACHINE INSERTION: 1.04±0.03 [.041±.001]
 HAND INSERTION: 1.04 ^{+0.10}/_{-0.00} [.041^{+.004}/_{-.000}]
- 5. APPLICATION TOOL PART NUMBER:
 MACHINE NO. 682127-2
 INSERTION HEAD NO. 682039-1
- 6. TO INSURE PROPER SPRING TENSION DO NOT EXCEED A 0.10 [.004] DIFFERENCE IN PIN DIA WHEN CHANGING TO A SMALLER PIN.
- 7. BOTTOM PLUG KNOCKOUT TOOL PART NUMBER 69729 WITH TIP PART NUMBER 69728.
- 8. MATERIAL; SPRING: BERYLLIUM COPPER (QQ-C-533)
 EYELET: COPPER (QQ-C-576)

SUPSD BY	OBSOLETE	OPEN	0.33-0.51 [.013-.020]	TIN	GOLD	2-332095-6
1-332095-9	OBSOLETE	CLOSED	0.41-0.48 [.016-.019]	TIN		
	OBSOLETE	OPEN	0.33-0.51 [.013-.020]	GOLD	GOLD	2-332095-4
	OBSOLETE	CLOSED				2-332095-3
		OPEN	0.33-0.41 [.013-.016]			2-332095-2
2-332095-6	OBSOLETE	CLOSED	0.33-0.51 [.013-.020]	TIN		2-332095-1
	OBSOLETE	OPEN	0.33-0.41 [.013-.016]	TIN		2-332095-0
2-332095-4	OBSOLETE	CLOSED	0.33-0.51 [.013-.020]	TIN		1-332095-9
2-332095-3	OBSOLETE	OPEN	0.33-0.41 [.013-.016]	TIN		1-332095-8
2-332095-2	OBSOLETE	CLOSED	0.33-0.41 [.013-.016]	GOLD		1-332095-7
2-332095-1	OBSOLETE	OPEN	0.33-0.41 [.013-.016]	GOLD		1-332095-6
	OBSOLETE	CLOSED	0.33-0.51 [.013-.020]	TIN		1-332095-5
1-332095-2	OBSOLETE	CLOSED	0.33-0.41 [.013-.016]	TIN	TIN	1-332095-2
						332095
		BOTTOM TYPE	RECOMMENDED PIN DIA	EYELET	SPRING	PART NO
				FINISH		

THIS DRAWING IS A CONTROLLED DOCUMENT.		DWN R.TALLEY	4-5-91		
DIMENSIONS: mm [INCHES]		CHK -	APVD -		
TOLERANCES UNLESS OTHERWISE SPECIFIED:		PRODUCT SPEC		MINIATURE SPRING SOCKET ASSEMBLY	
0 PLC ± -		APPLICATION SPEC		SERIES 1	
1 PLC ± -		WEIGHT -		SIZE A2	CAGE CODE 00779
2 PLC ± -		CUSTOMER DRAWING		DRAWING NO C=332095	RESTRICTED TO -
3 PLC ± 0.20 [.008]		SCALE 20:1		SHEET 1 OF 1	REV AA2
4 PLC ± -					
ANGLES ± -					
FINISH SEE TABLE					

单击下面可查看定价，库存，交付和生命周期等信息

[>>TE Connectivity\(泰科\)](#)