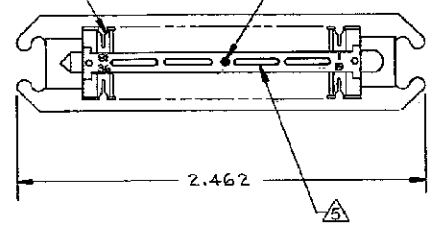
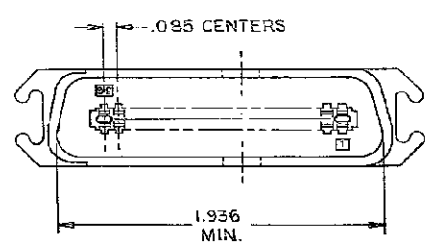
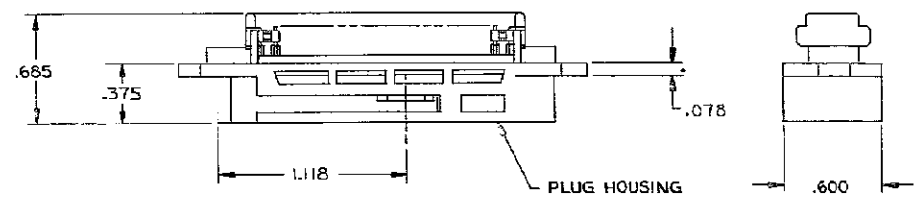


LOC		DST		REVISIONS			
GP	00	TP	LTR	DESCRIPTION	DATE	UN	APD
		K		REVISED PER ECO-08-007327	26JAN2009	ZMR	WLM

TERMINAL 36 REQUIRED
 YELLOW COLOR DOT LOCATED IN CENTER



1. THE CONTACT SURFACES OF THE TERMINALS ARE COATED WITH LUBRICANT.
2. ALL DIMENSIONS SHOWN ARE FOR REFERENCE ONLY UNLESS OTHERWISE SPECIFIED.
3. MATERIAL:
 HOUSING - THERMOPLASTIC (BLACK)
 TERMINALS - HIGH STRENGTH COPPER ALLOY PLATED WITH EITHER .000030 MIN GOLD OR GOLD FLASH OVER PALLADIUM NICKEL .000030 MIN TOTAL ON CONTACT MATING SURFACE. .000050 MIN NICKEL UNDERPLATE OVER ENTIRE TERMINAL.
4. WIRE SIZE: 26, 27, OR 28 AWG 7 STRANDS OF COPPER CONDUCTORS. MAX INSULATION ϕ .045 IS ACCEPTABLE FOR MOST APPLICATIONS.
5. CORING MAY OR MAY NOT APPEAR AND IS AT THE DISCRETION OF TYCO ELECTRONICS.



AS SHOWN	552470-1
DESCRIPTION	PART NO

THIS DRAWING IS A CONTROLLED DOCUMENT.		DRN A. HOLT 3-8-01	Tyco Electronics Corporation Harrisburg, PA 17105-3808
DIMENSIONS: INCHES		CHK M.D. FRIEL 3-28-01	
TOLERANCES UNLESS OTHERWISE SPECIFIED:		APRD S. HEGE 3-30-01	NAME
0 PLC ± -	1 PLC ± -	PRODUCT SPEC	PLUG ASSY. 36 POSITIONS, E SLOT BAIL LOCK, CHAMP-LOK
2 PLC ± -	3 PLC ± -	APPLICATION SPEC	
4 PLC ± -	ANGLES ± -	WEIGHT	RESTRICTED TO
MATERIAL	FINISH	A2	SIZE
		00779	DWG CODE
		C=552470	DRAWING NO
			SCALE
			NTS
			SHEET
			1 of 1
			REV
			K

单击下面可查看定价，库存，交付和生命周期等信息

[>>TE Connectivity\(泰科\)](#)