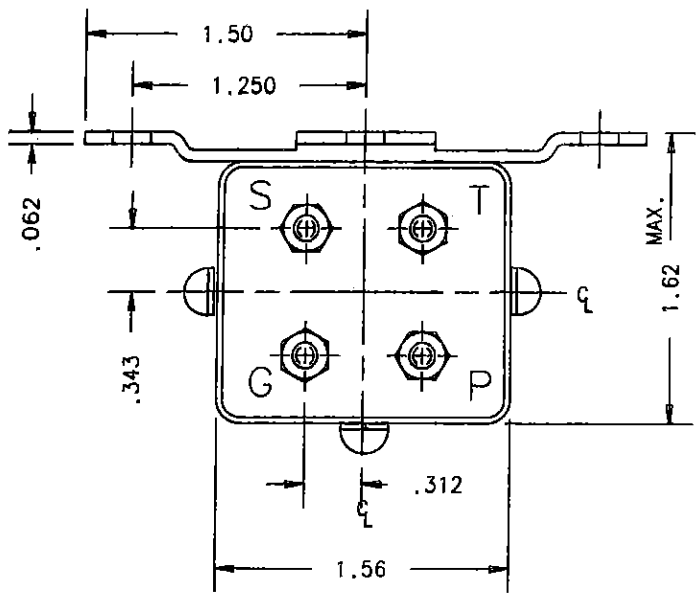
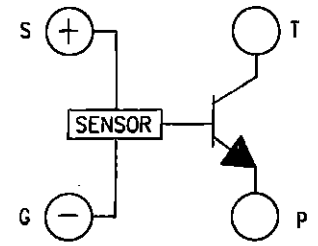


REVISIONS		RELEASED	
REV	DESCRIPTION	DATE	APPROVED
A	INITIAL RELEASE	06/10/31	

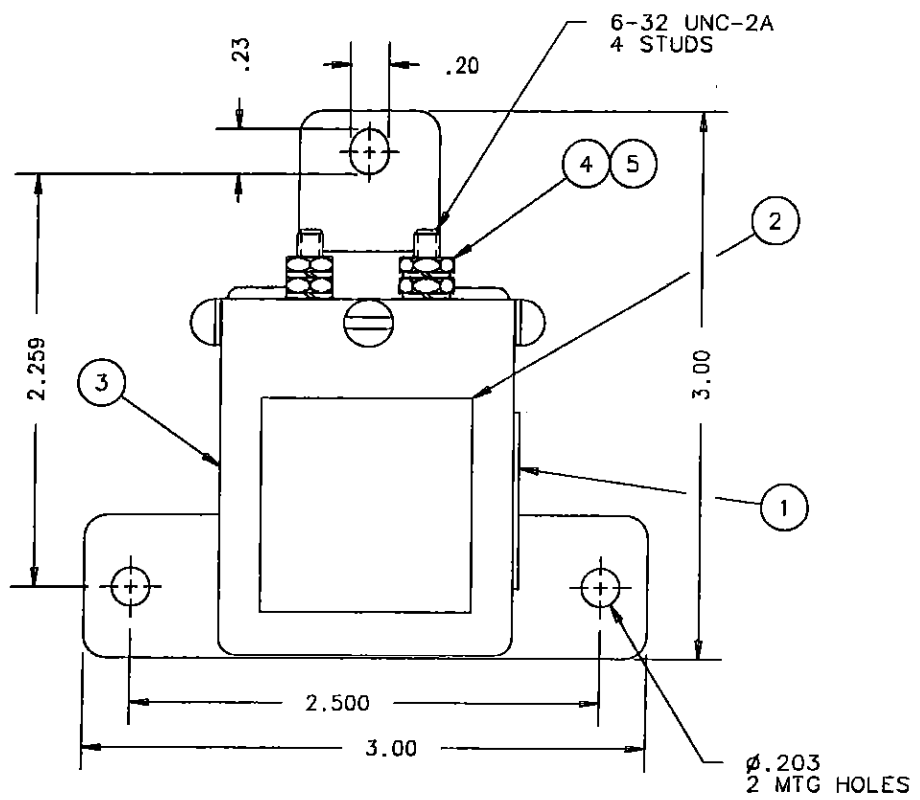


1. TIME/VOLTAGE CURVE

VOLTAGE	MIN. TIME	MAX. TIME
35	0.239	0.781
40	0.115	0.326
50	0.062	0.158
60	0.042	0.106
70	0.034	0.084
75	0.031	0.076
100	0.023	0.050



- TRANSISTOR SWITCH IS OFF ABOVE 32 VDC ± 1V.
- ON RISING VOLTAGE FROM A ZERO VOLTAGE DATUM THE TRANSISTOR SWITCH IS ON BY 6 VDC (MAX) AND REMAINS ON UP TO OVERVOLTAGE TRIP THRESHOLD 32 VDC ± 1V. (MINIMUM)
- WHEN TRANSISTOR IS ON TP VOLTAGE DROP IS NOT GREATER THAN 2.0 VDC MAX.
- TRANSISTOR SWITCH LATCHES OFF ABOVE 32 VDC ± 1V, AND REAMAINS OFF ON FALLING VOLTAGE DOWN TO 10 VDC MAX. TO RESTORE TRANSISTOR SWITCH ON, OPEN THE SUPPLY TO PIN S AND THEN REINSTATE NORMAL SUPPLY (6 TO 32 VDC) TO PIN S.
- TRANSISTOR RATING 5 AMP RESISTIVE AT 28 VDC
3 AMP INDUCTIVE AT 100 VDC
- OPERATING TEMPERATURES -55°C TO +71°C.
- WEIGHT MAXIMUM 6 OZ.
- ALTITUDE 50,000 FT.
- VIBRATION - MIL STD 810B METHOD 514. PROC 1, CURVE Z.
- CONSTRUCTION - POTTED CASE.



5	4	51806-014	WASHER LOCK NO 6 SPLIT			1616360-7	BRONZE
4	4	50406-034	NUT 6-32 X 1/4 X 5/64 HEX			5-1616337-3	BRASS
3	1	35093-020	RELAY ASSEMBLY - PRIMARY			9-1616960-0	
2	1	34591-001	PLATE - WIRING DIAGRAM			1-1616256-0	
1	1	22039-001	PLATE - NAME			3-1616928-1	
FIND NO	QTY REQD	PART OR IDENTIFYING NO	NOMENCLATURE OR DESCRIPTION	DRAWING OR SPECIFICATION	FSCM NO	TYCO PART NO	MATERIAL OR NOTE

UNLESS OTHERWISE SPECIFIED DIMENSIONS ARE IN INCHES TOLERANCES ON

2 PL DEC. 3 PL DEC. ANGLES
 ± .03 ± .010 ± 1°

MATERIAL

DR BY WER 06/10/31
 CHK BY LB 06/11/22
 ENGR BSE 06/11/15
 MFG Ph 06/11/28

SIZE C
 CODE IDENT 74063

SCALE NONE SHEET

TYCO Electronics
 Hartman Division 175 N. DIAMOND STREET MANSFIELD, OHIO 44902

RELAY - OVERVOLTAGE WITH TIME DELAY 093

DWG NO. E-311TS-1

REF TYCO P/N 8-1616960-9

单击下面可查看定价，库存，交付和生命周期等信息

[>>TE Connectivity\(泰科\)](#)