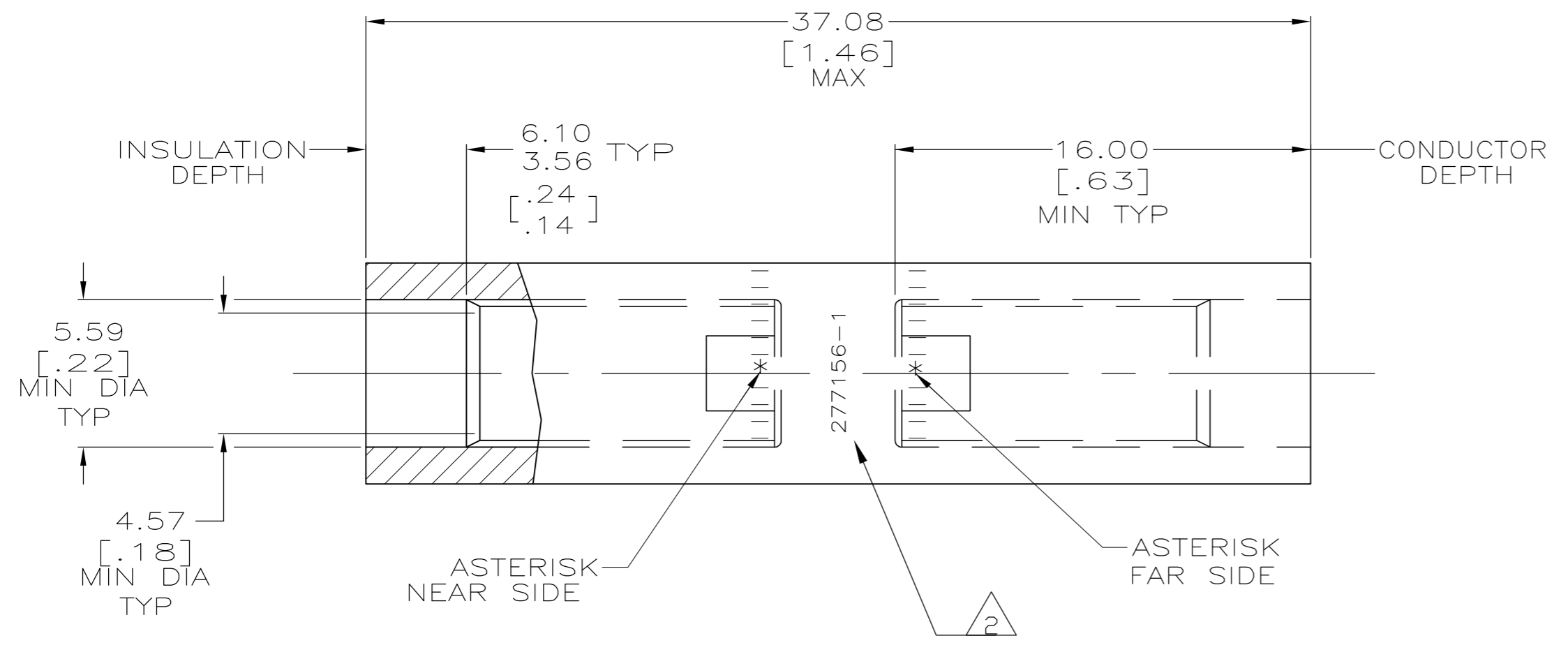
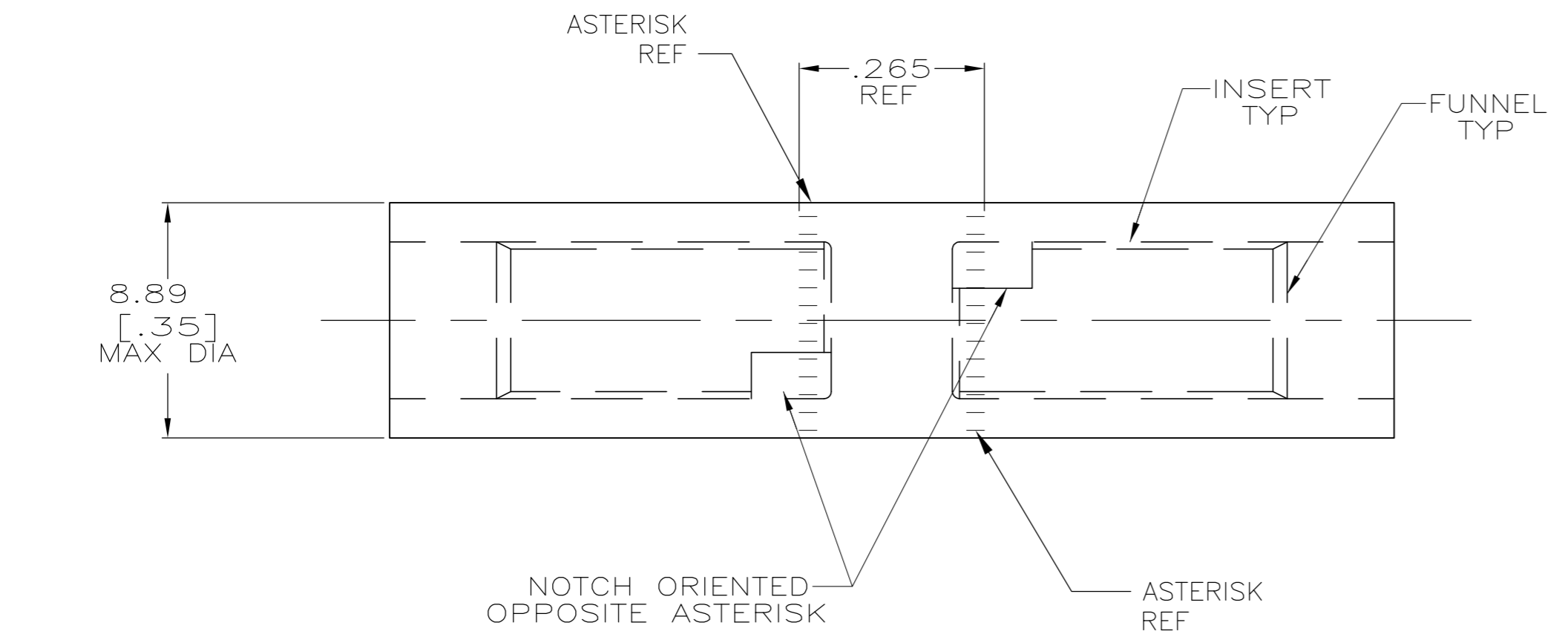


THIS DRAWING IS UNPUBLISHED. RELEASED FOR PUBLICATION
 © COPYRIGHT - By - ALL RIGHTS RESERVED.

LOC		DIST		REVISIONS			
P	LTR	DESCRIPTION		DATE	DWN	APVD	
P		REV PER ECO-11-008916		13MAY11	PY	BW	



1 WIRE INSULATION: 4.62[.182] - 5.08[.200] DIA
 2 STAMP "277156-1 AMP 8AL-10CU"
 LOCATE APPROX AS SHOWN



SPLICE: COPPER ASTM B-187
 TIN PL. PER ASTM B 545 0.00381 [.000150] MIN THK
INSERT & FUNNEL: BRASS ASTM B36
 NICKEL PL SAE AMS QQ-N-290A,
 DATED JULY 2000,
 0.00254 [.000100] MIN THK

277156-1

THIS DRAWING IS A CONTROLLED DOCUMENT.		DWN DK SCHRUM 7/5/89	TE TE Connectivity	
DIMENSIONS: MM [INCHES]		CHK MS FEHER 5/1/90		
TOLERANCES UNLESS OTHERWISE SPECIFIED:		APVD MJ SPICER 5/1/90	NAME	
0 PLC ± -		PRODUCT SPEC	WIRE SPLICE, BUTT, COPALUM, SEALED,	
1 PLC ± -		108-11011	4.8mm2 [10] COPPER	
2 PLC ± -		APPLICATION SPEC	8.6mm2 [8] ALUMINUM	
3 PLC ± -		114-2134	SIZE	CAGE CODE
4 PLC ± -		WEIGHT 10.2 GRAMS	A2	00779
ANGLES ± -		CUSTOMER DRAWING	DRAWING NO. C-277156	
FINISH SEE TABLE		SCALE 5:1	SHEET 1 of 1	REV P

单击下面可查看定价，库存，交付和生命周期等信息

[>>TE Connectivity\(泰科\)](#)