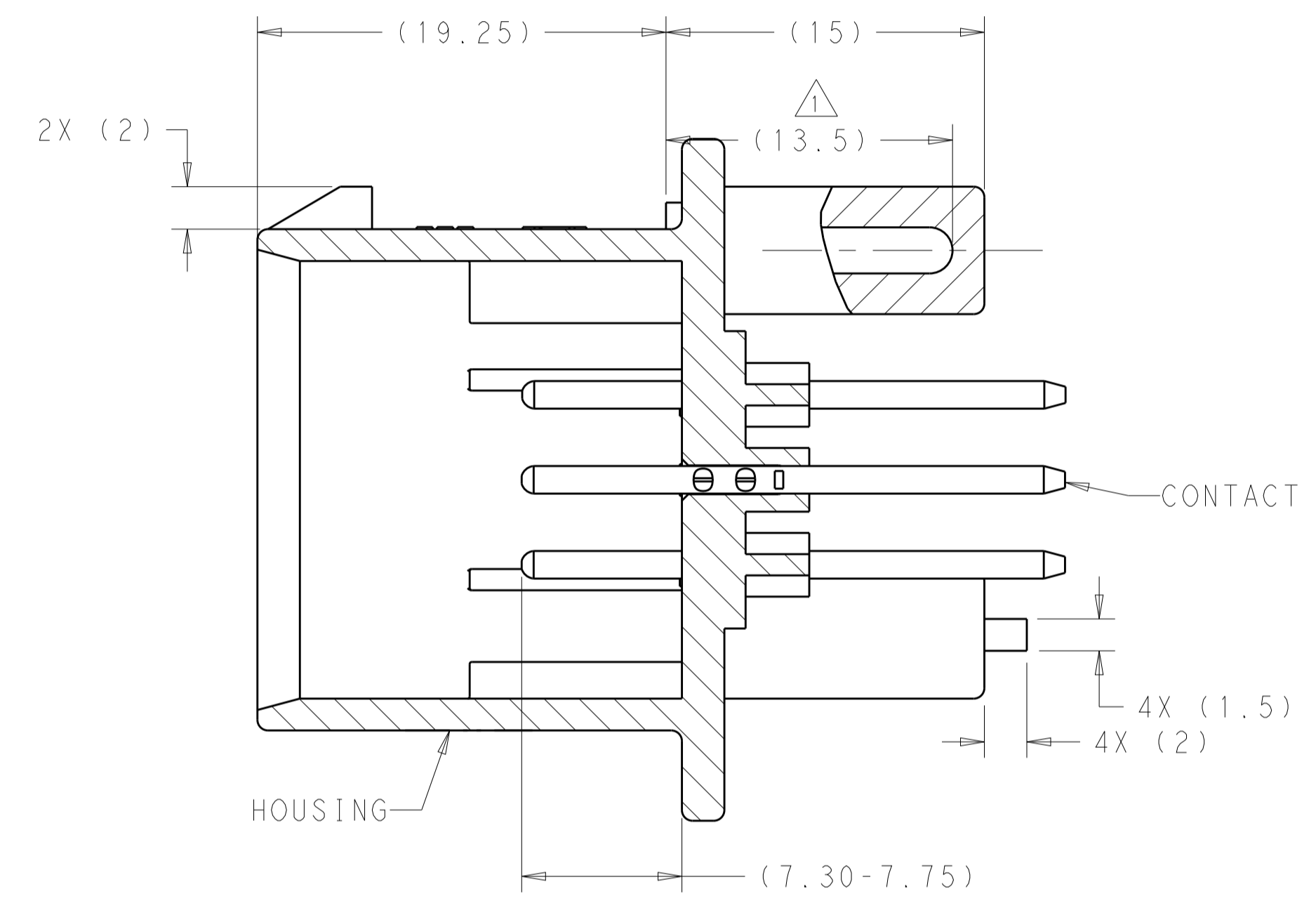
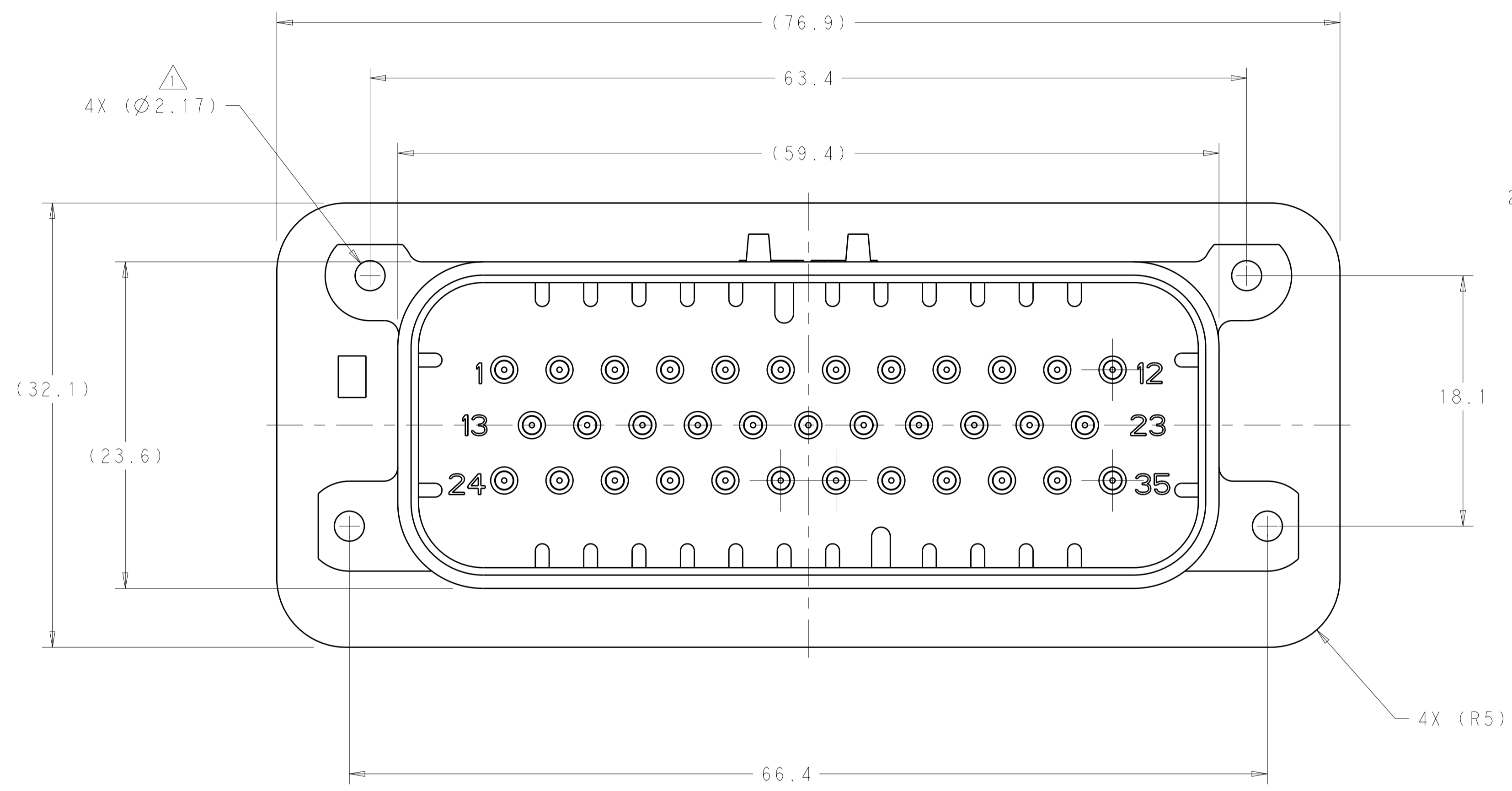
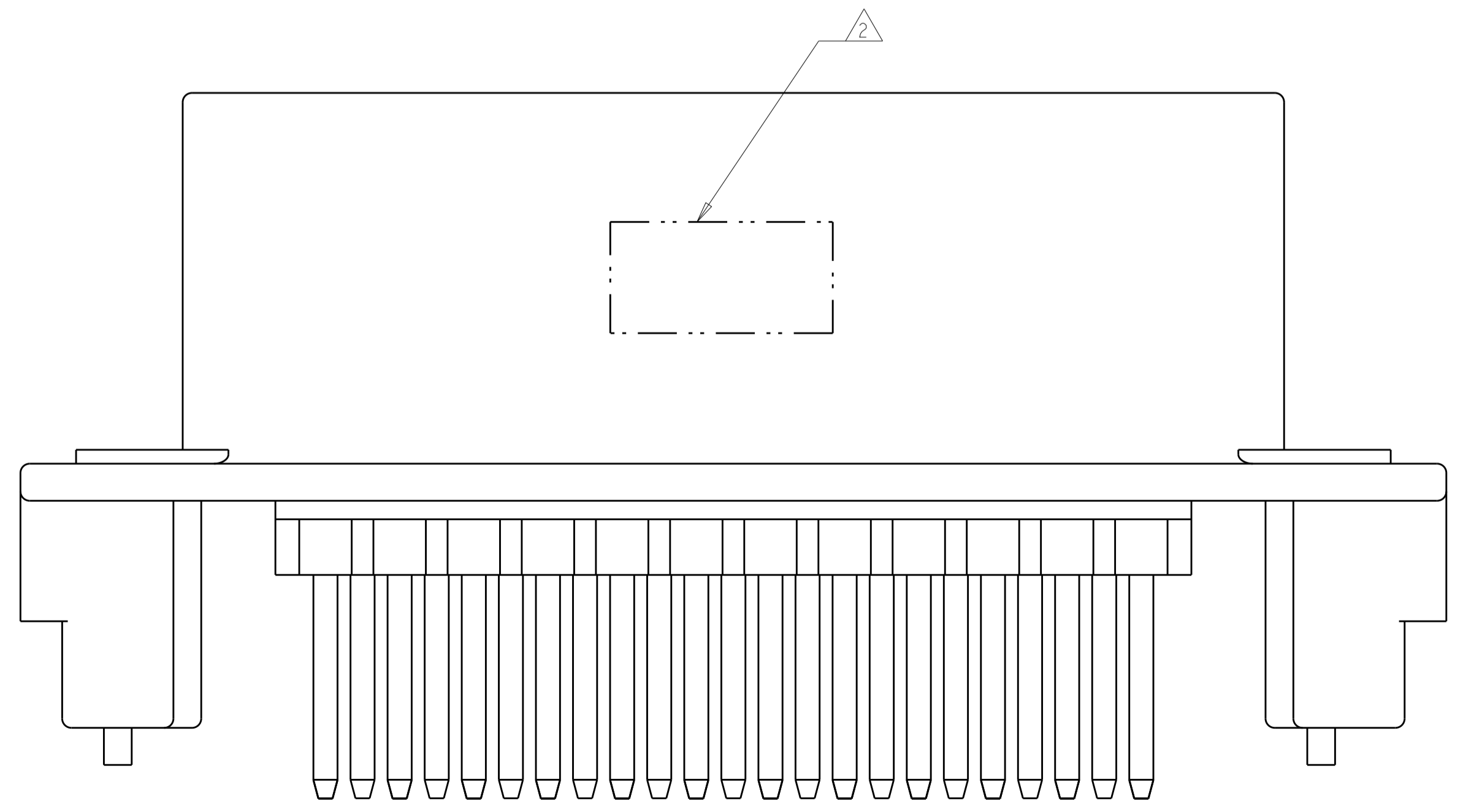


REVISIONS				
P.	LTN	DESCRIPTION	DATE	APVD
A9		REVISED PER ECO-16-003526	09MAR2016	JM DS
A10		REVISED PER ECO-19-009419	20JUNE2019	DS DS
A11		REVISED PER ECO-20-004256	25MAR2020	JM DS
A12		REVISED PER PCN E-20-016603	24NOV2020	PN DS

- 1. SUGGESTED MOUNTING SCREW SIZE IS $\varnothing 2.50-3.00\text{mm}$ [$\varnothing 0.099 - 0.118$ INCH] SELF TAPPING THREAD FORMING SCREW, SUCH AS DELTA PT, TO BE DRIVEN AT 0.6-0.8 N-m. THE CUSTOMER SHOULD TEST THE SCREW SIZE AND TYPE IN ORDER TO VERIFY THEIR SELECTION FOR THEIR APPLICATION.
- 2. DATE CODE IN THIS LOCATION USING 5 DIGIT CODE. FIRST 2 DIGITS = YEAR, SECOND 2 DIGITS = WEEK, LAST DIGIT = DAY.
- 3. MATERIALS: HEADER HOUSING - GLASS FILLED PBT, PINS - TIN OR GOLD PLATED BRASS.
- 4. HOUSING COLORS ARE MECHANICALLY KEYS TO MATE ONLY WITH IDENTICALLY COLORED PLUG ASSEMBLIES.
- 5. HEADER MATES TO PLUG ASSEMBLY 776164 WHICH USES REELED TERMINAL 770520 OR LOOSE PIECE TERMINAL 770854.



SECTION A-A



776230-1 & 1-776230-1 SHOWN

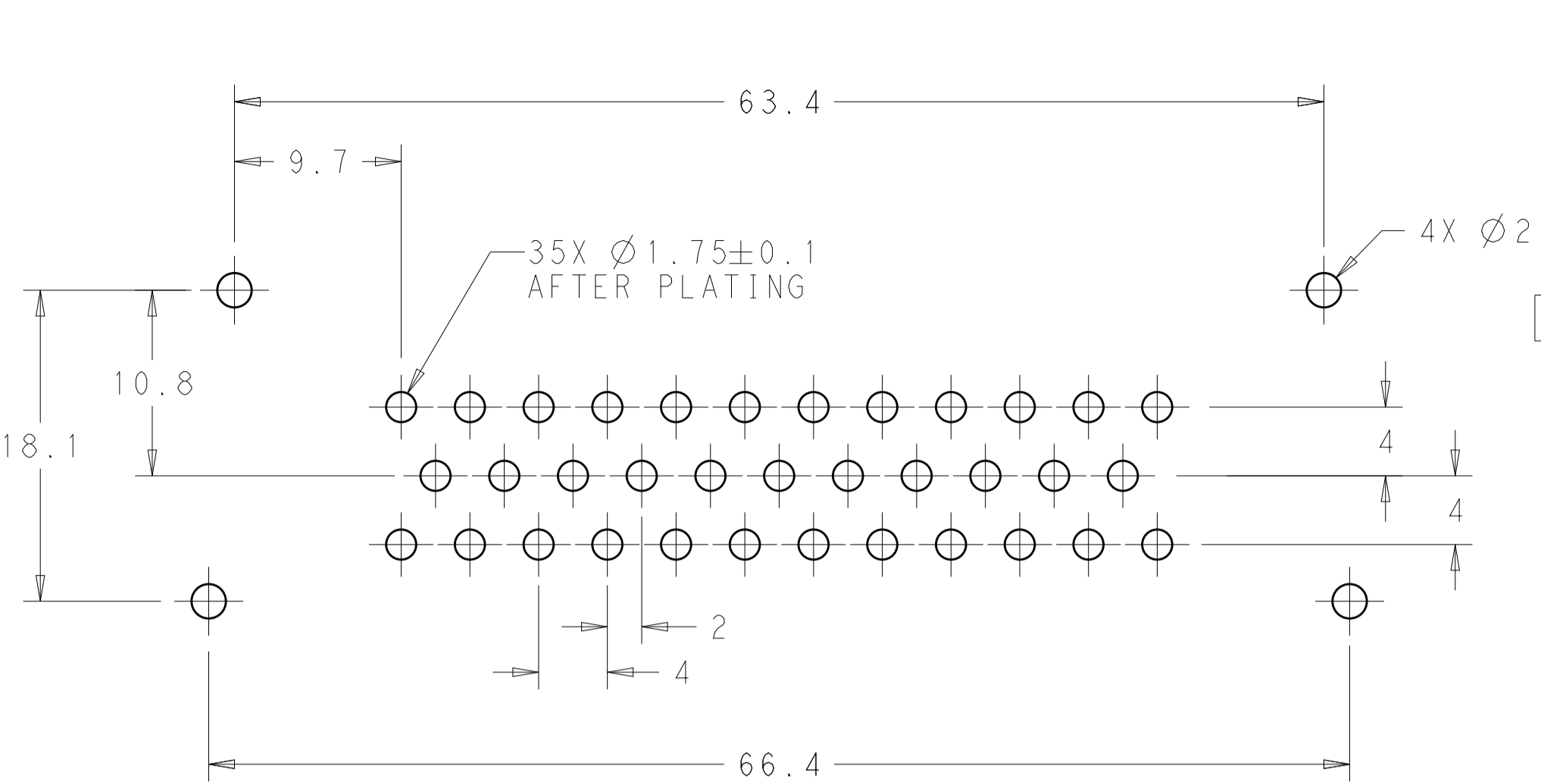
HEADER COLOR	PLATING	PART NUMBER
ORANGE	GOLD	1-776230-6
BLUE	GOLD	1-776230-5
GRAY	GOLD	1-776230-4
NATURAL	GOLD	1-776230-2
BLACK	GOLD	1-776230-1
BLUE	TIN	776230-5
GRAY	TIN	776230-4
NATURAL	TIN	776230-2
BLACK	TIN	776230-1

THIS DRAWING IS A CONTROLLED DOCUMENT. DIMENSIONING AND TOLERANCING PER ASME Y14.5M-2009.		OWN: D. STRAUSSER 04FEB2020 CHK: D. STRAUSSER 22MAR2020 APVD: D. STRAUSSER 27APR2020	NAME: D. STRAUSSER	
DIMENSIONS: mm	TOLERANCES UNLESS OTHERWISE SPECIFIED:	PRODUCT SPEC: 108-1329	RESTRICTED TO: -	
0 PLC ±0.2	1 PLC ±0.2	APPLICATION SPEC: 114-16016	SIZE: A1	CAGE CODE: 00779
2 PLC ±0.2	3 PLC ±0.2	WEIGHT: 39.99g	DRAWING NO: 776230	
4 PLC ±0.2	ANGLES ±0.5	CUSTOMER DRAWING	SCALE: 4:1	SHEET 1 OF 2
MATERIAL: 3	FINISH: 4	DRAWING NO: 776230		

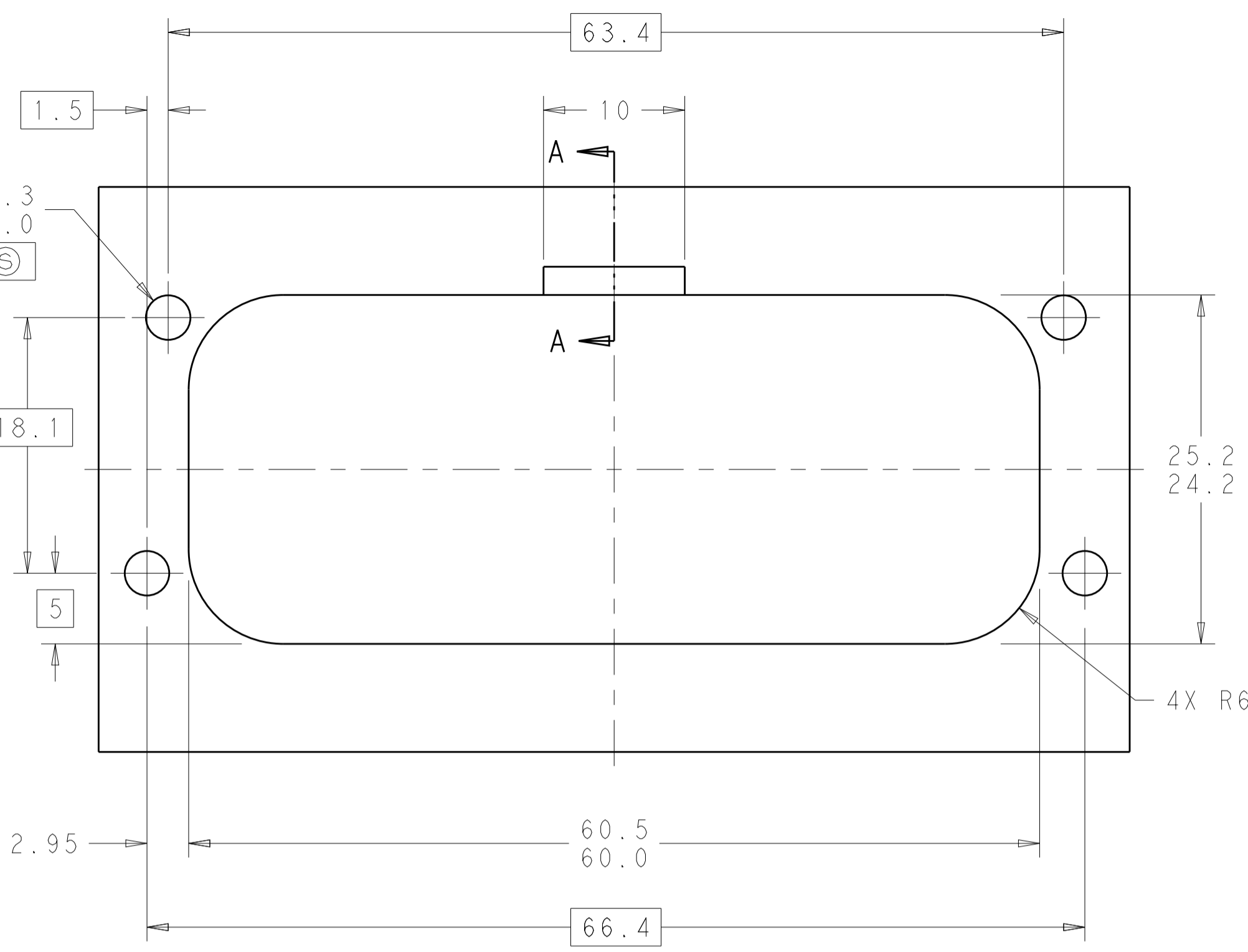


HEADER ASSEMBLY, 35 POSITION, VERTICAL, AMPSEAL

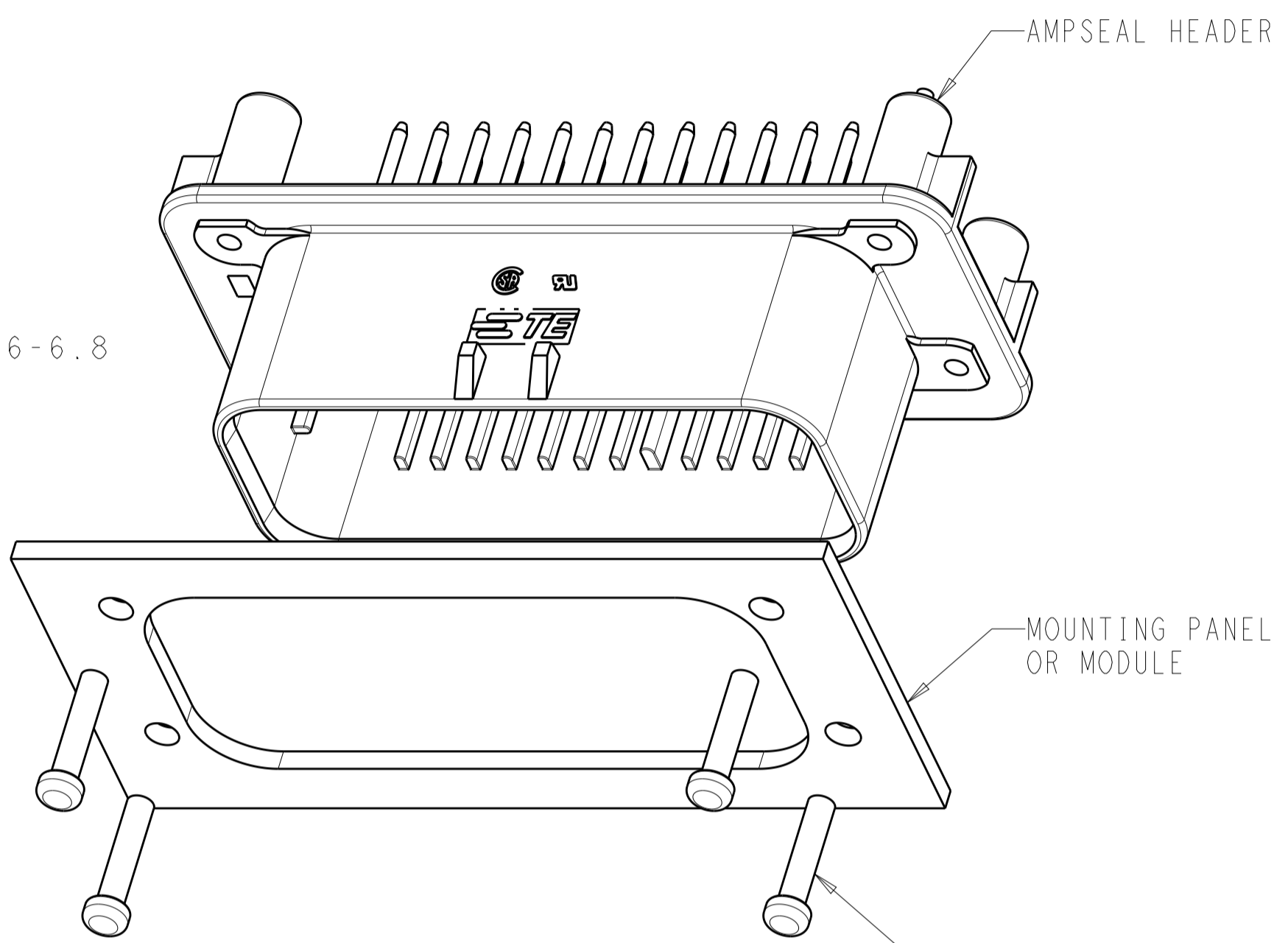
REVISIONS				
P.	LTH	DESCRIPTION	DATE	APVD
-	-	SEE SHEET 1	-	-



RECOMMENDED P.C. BOARD LAYOUT
 FOR 1.57 THICK P.C. BOARD

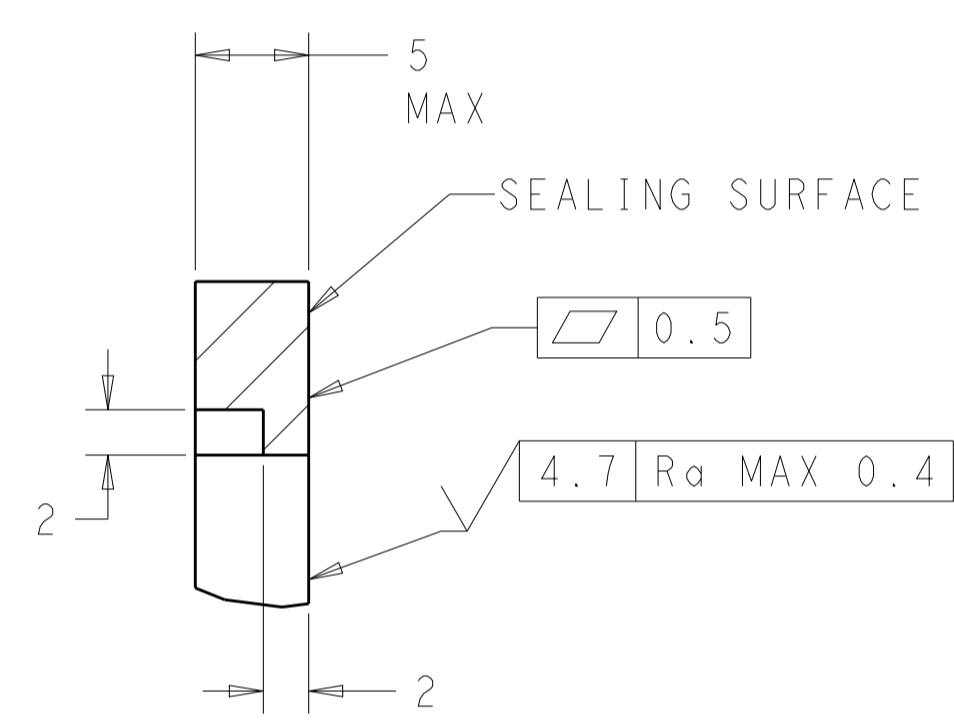


RECOMMENDED MOUNTING HOLE LAYOUT
 FOR 5.0 MAX THICK PANEL

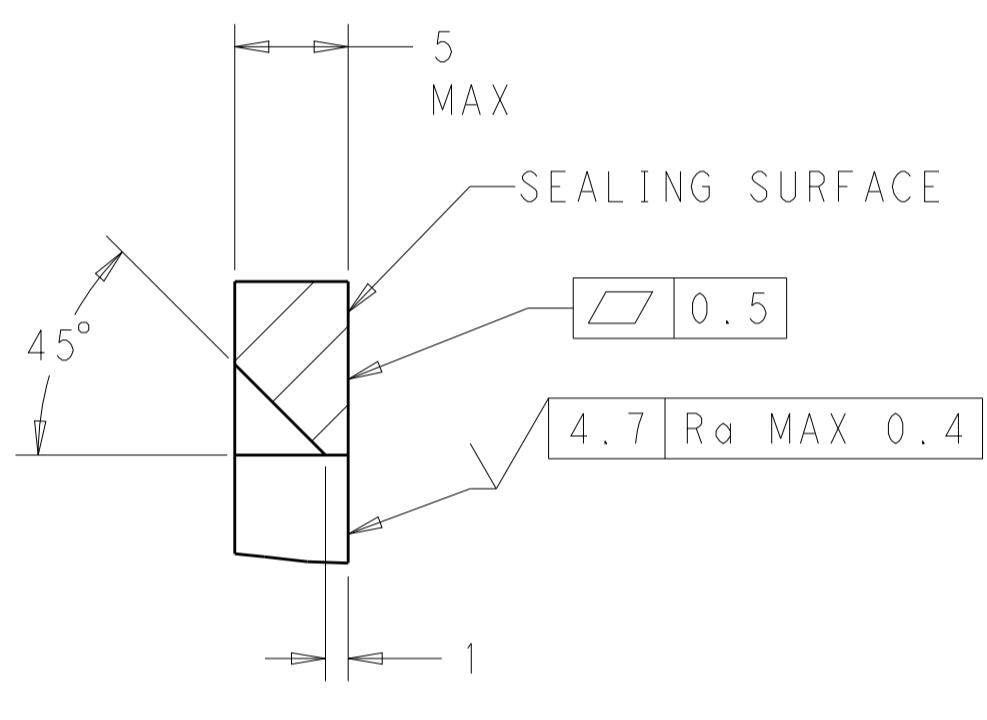


SCALE 2:1

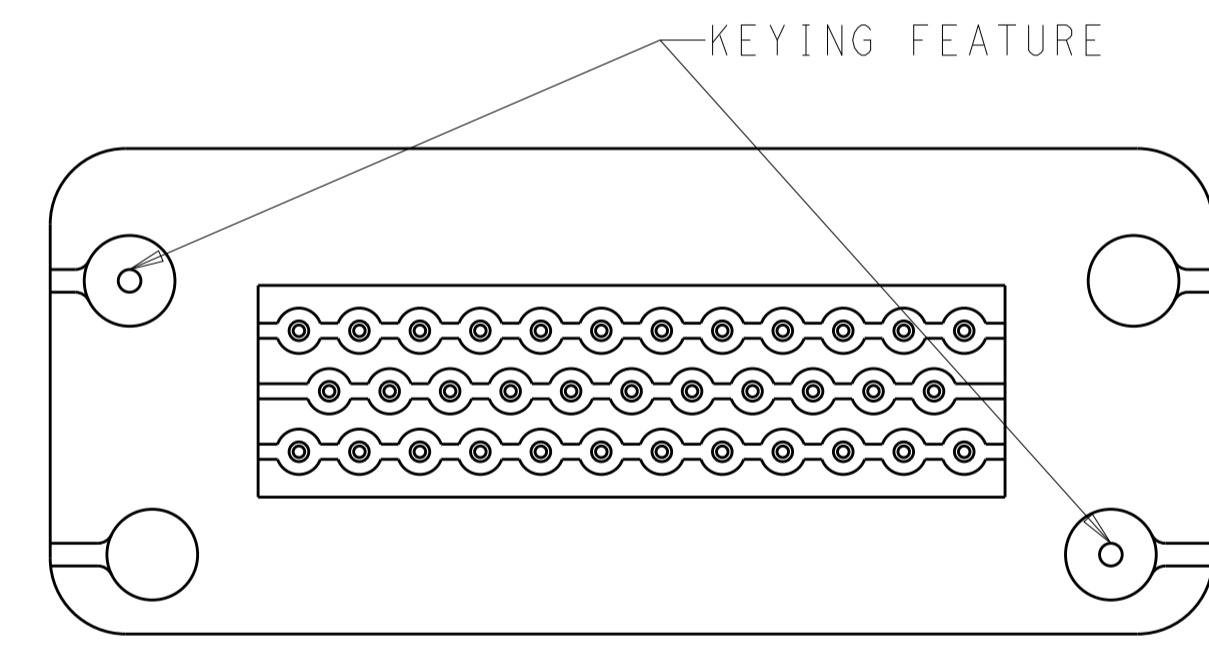
MOUNTING SCREW (4)
 TORQUE TO 0.6N-m TO 0.8N-m



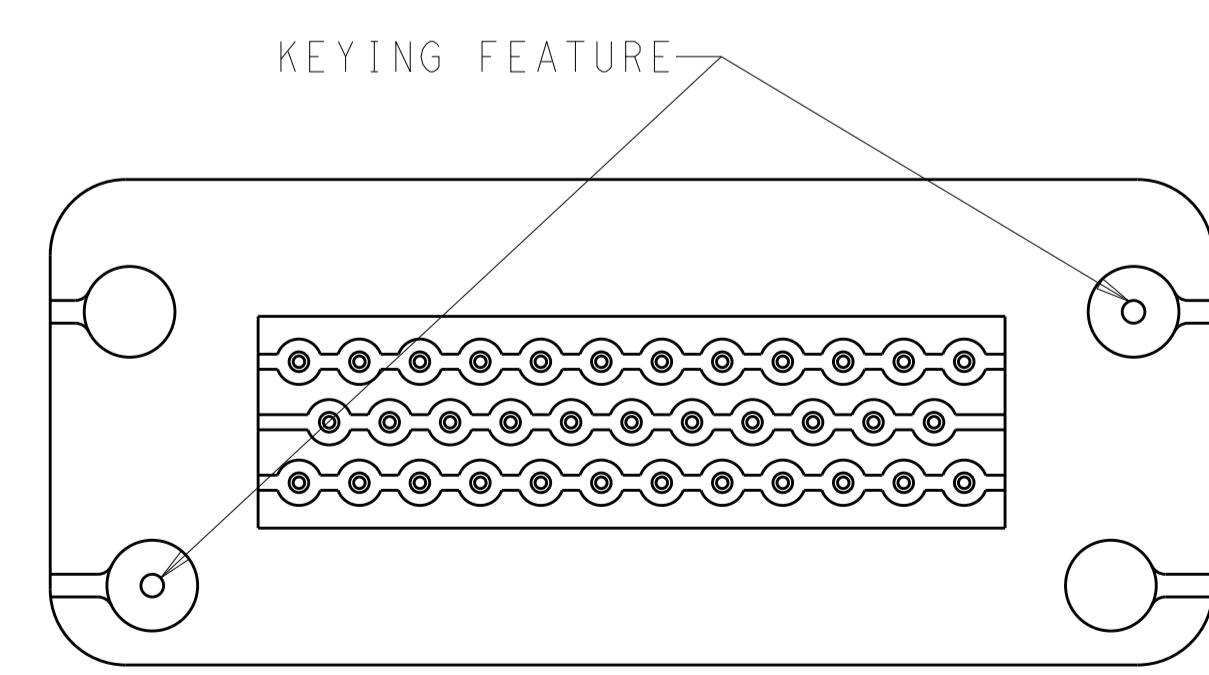
SECTION A-A
 OPTIONAL CONSTRUCTION IF PANEL
 THICKNESS IS GREATER THAN 2.0



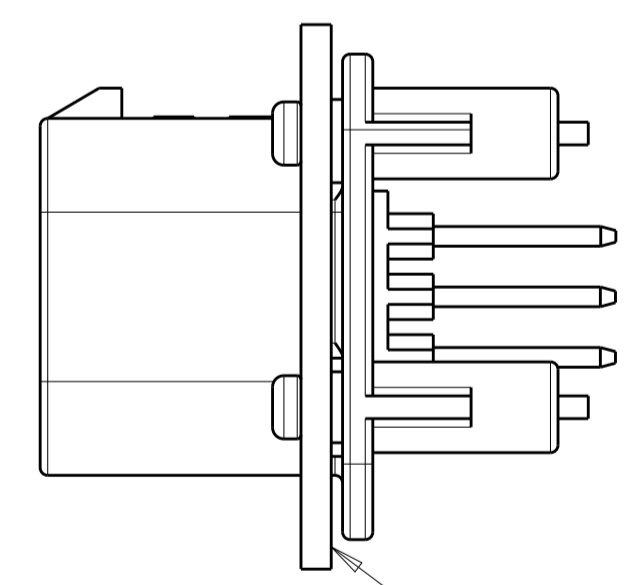
SECTION A-A
 OPTIONAL CONSTRUCTION IF PANEL
 THICKNESS IS GREATER THAN 2.0



KEYING FOR 776230-1, 1-776230-1, 776230-4,
 1-776230-4 AND 1-776230-6
 SCALE 2:1

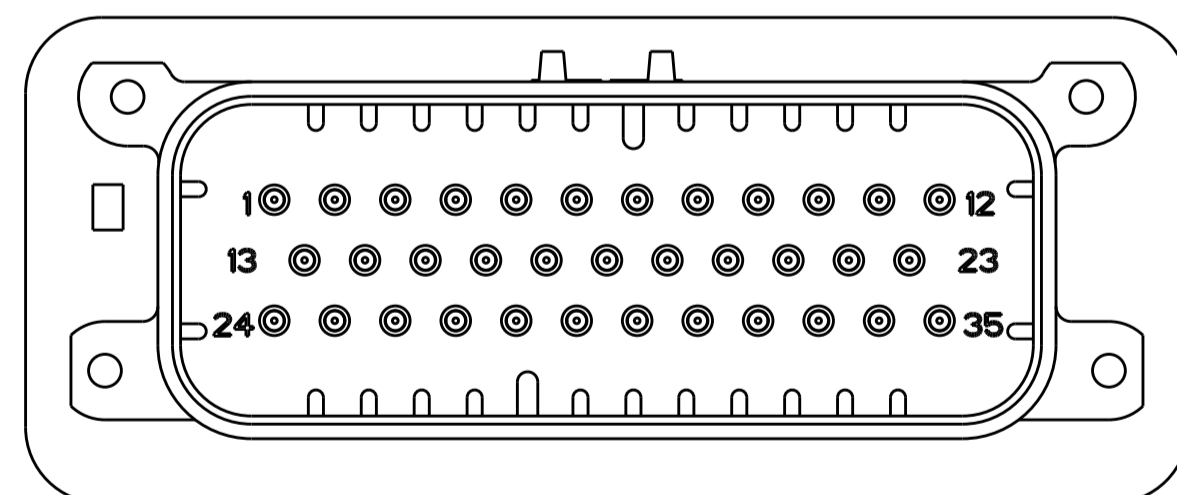


KEYING FOR 776230-2, 1-776230-2, 776230-5
 AND 1-776230-5
 SCALE 2:1

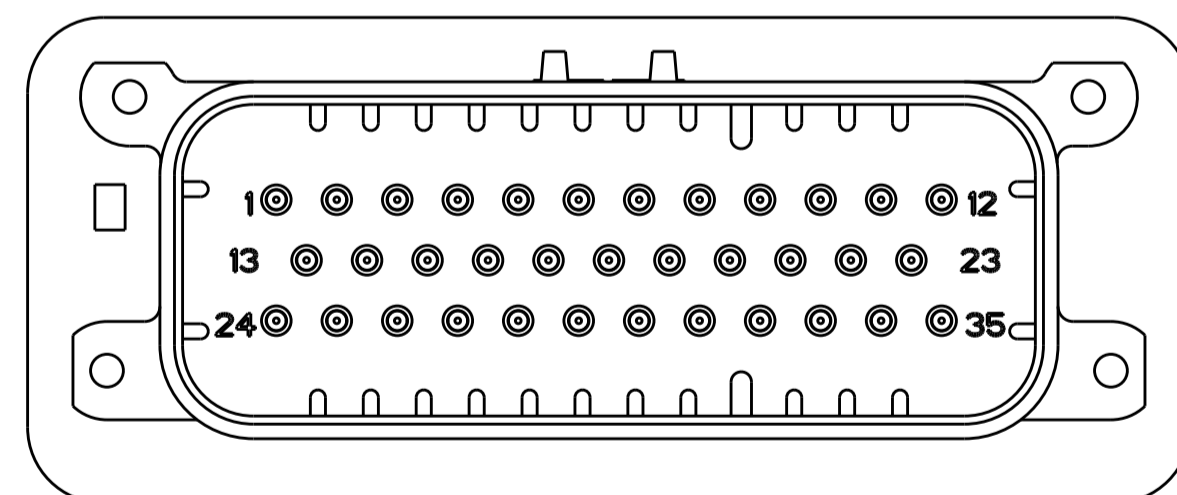


SCALE 2:1

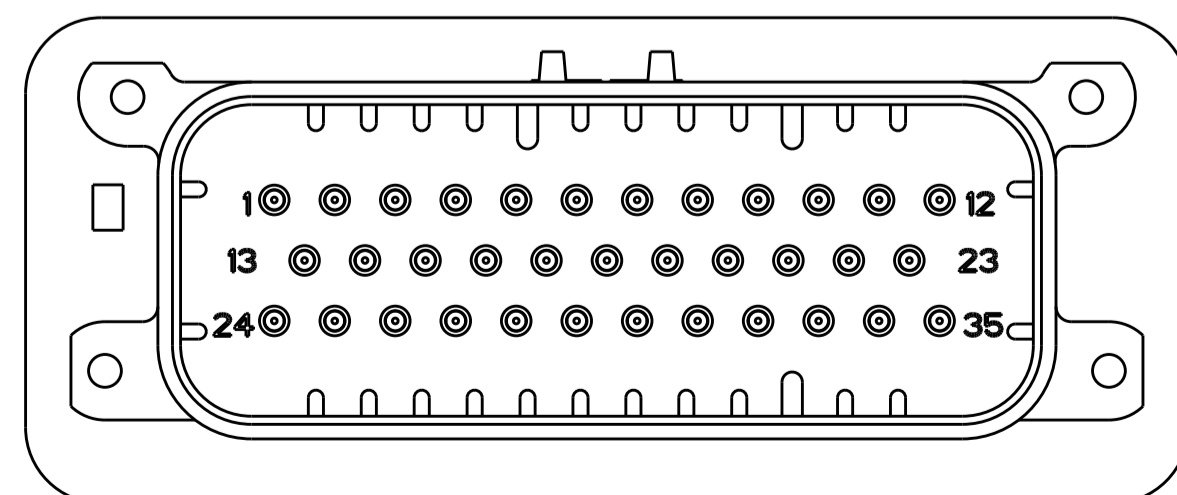
ENSURE THE HEADER IS FLUSH
 TO THE PANEL FACE ALL AROUND
 BEFORE TIGHTENING TO FINAL TORQUE



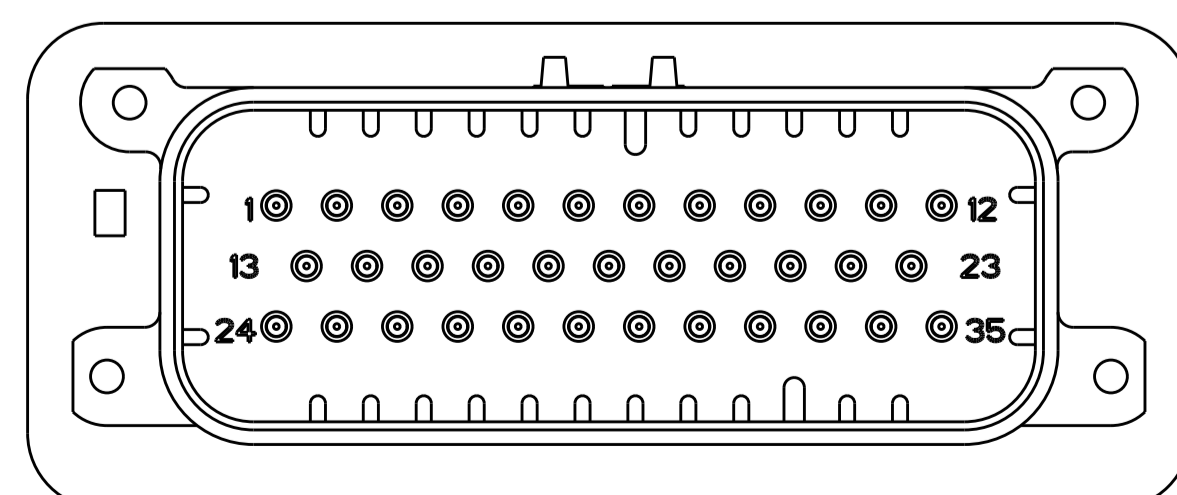
776230-2 & 1-776230-2
 KEY LOCATION
 SCALE 2:1



776230-4 & 1-776230-4
 KEY LOCATION
 SCALE 2:1



776230-5 & 1-776230-5
 KEY LOCATION
 SCALE 2:1



1-776230-6
 KEY LOCATION
 SCALE 2:1

THIS DRAWING IS A CONTROLLED DOCUMENT.		OWN: D. STRAUSSER 04FEB2010	TE Connectivity NAME: HEADER ASSEMBLY, 35 POSITION, VERTICAL, AMPSEAL
DIMENSIONS:		CHK: D. STRAUSSER 22MAR2010	
mm	0 PLC ±0.2	APVD: D. STRAUSSER 27APR2010	RESTRICTED TO
	1 PLC ±0.2	PRODUCT SPEC: 108-1329	SIZE: CAGE CODE: DRAWING NO: A100779
	2 PLC ±0.2	APPLICATION SPEC: 114-16016	SCALE: 4:1
	3 PLC ±0.2	WEIGHT: 39.99g	SHEET: 2 OF 2
	4 PLC ±0.2	CUSTOMER DRAWING	REV: A12
	ANGLES ±0.2		

单击下面可查看定价，库存，交付和生命周期等信息

[>>TE Connectivity\(泰科\)](#)