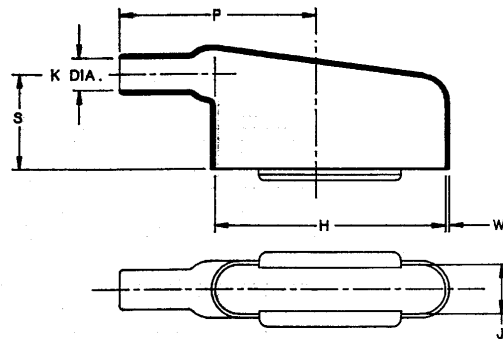
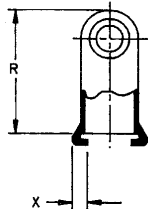


AS SUPPLIED



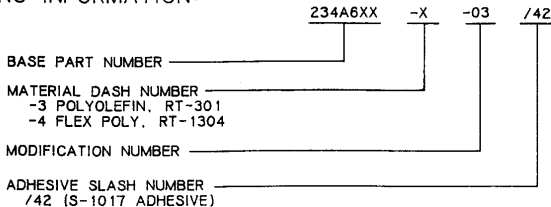
AFTER UNRESTRICTED RECOVERY

NOTES:

1. ALL DIMENSIONS ARE IN INCHES.
2. DIMENSIONS APPEARING IN TABLE ARE AS FOLLOWS:
 a - AS SUPPLIED
 b - AFTER UNRESTRICTED RECOVERY
3. COATING IS STANDARD. AS SUPPLIED DIMENSIONS APPEARING IN TABLE ARE FOR UNCOATED PARTS WHEN COATING IS ADDED. ENTRY DIAMETERS WILL BE REDUCED BY .06 MAX. PART IS COATED THROUGHOUT INCLUDING LIPS.

PART NUMBER	H		J		K		P	R	S	W	X
	MIN	±5%	MIN	±5%	MIN	MAX	±10%	±10%	±10%	±20%	±20%
	a	b	a	b	a	b	b	b	b	b	b
234A611-X-03/42	.63	.80	.63	.42	.63	.16	1.02	.85	.60	.04	.12
234A621-X-03/42	.75	1.11	.75	.42	.75	.21	1.21	.97	.73	.04	.12
234A632-X-03/42	1.15	1.66	1.15	.42	1.15	.29	1.69	1.10	.87	.04	.12
234A642-X-03/42	1.35	2.31	1.35	.42	1.35	.34	2.10	1.20	1.00	.04	.12
234A652-X-03/42	1.48	2.28	1.48	.54	1.48	.42	2.20	1.27	1.00	.04	.12
234A661-X-03/42	.63	.80	.63	.42	.63	.15	1.02	.73	.48	.04	.12
234A671-X-03/42	.75	1.11	.75	.42	.75	.20	1.21	.78	.53	.04	.12

ORDERING INFORMATION:



If this document is printed it becomes uncontrolled.
 Check for the latest revision.

SPECIFICATION CONTROL DRAWING (LIMITED DISTRIBUTION)

THIS DRAWING AND THE INFORMATION SET FORTH HEREON ARE THE PROPERTY OF RAYCHEM CORPORATION, AND ARE TO BE HELD IN TRUST AND CONFIDENCE. PUBLICATION, DUPLICATION, DISCLOSURE OR USE FOR ANY PURPOSE NOT EXPRESSLY AUTHORIZED IN WRITING BY RAYCHEM CORPORATION IS PROHIBITED.	DRAWN J. BITTER	Raychem RAYCHEM CORPORATION 300 CONSTITUTION DRIVE MENLO PARK, CALIFORNIA 94025	TITLE BOOT, RECTANGULAR SUBMINIATURE, 90° END ENTRY, OVEREXPANDED
	CHECKED <i>SCT</i>		
	DESIGN APPROVED <i>R. J. Bitter</i>	DWG NO. 234A611-X-03/42 THRU 234A671-X-03/42	
	APPROVED BY <i>[Signature]</i>		
	MANUFACTURING <i>[Signature]</i>	DATE 16 APRIL 1987	
	QUALITY CONTROL <i>[Signature]</i>	SHEET 1 OF 1	

单击下面可查看定价，库存，交付和生命周期等信息

[>>TE Connectivity\(泰科\)](#)