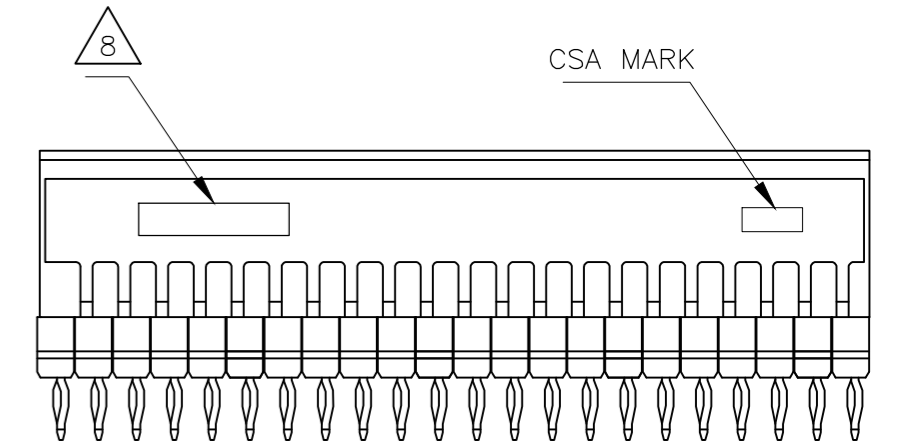
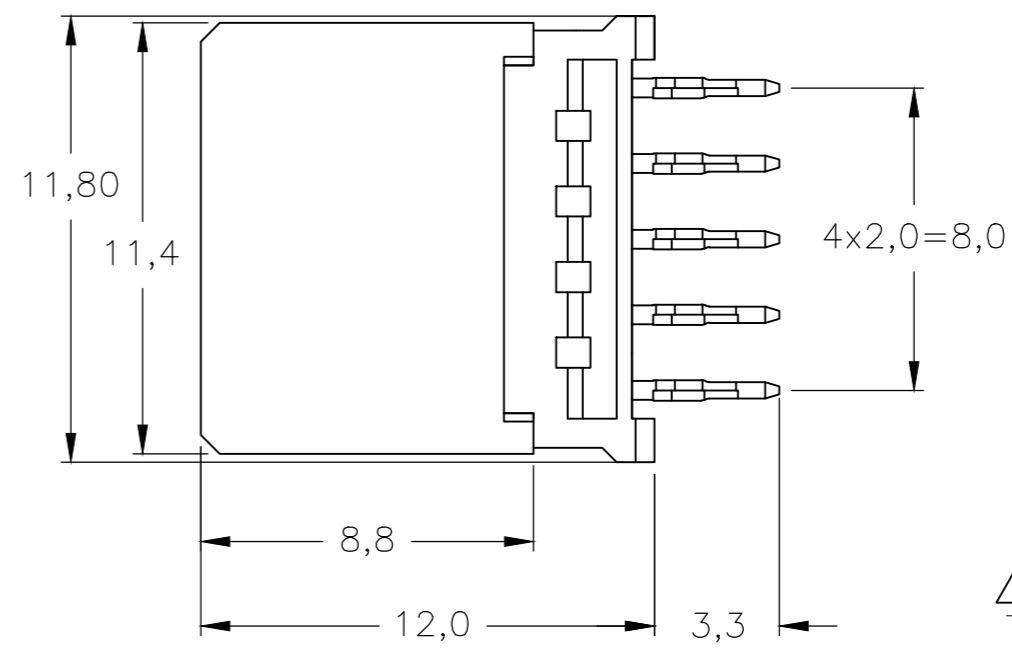
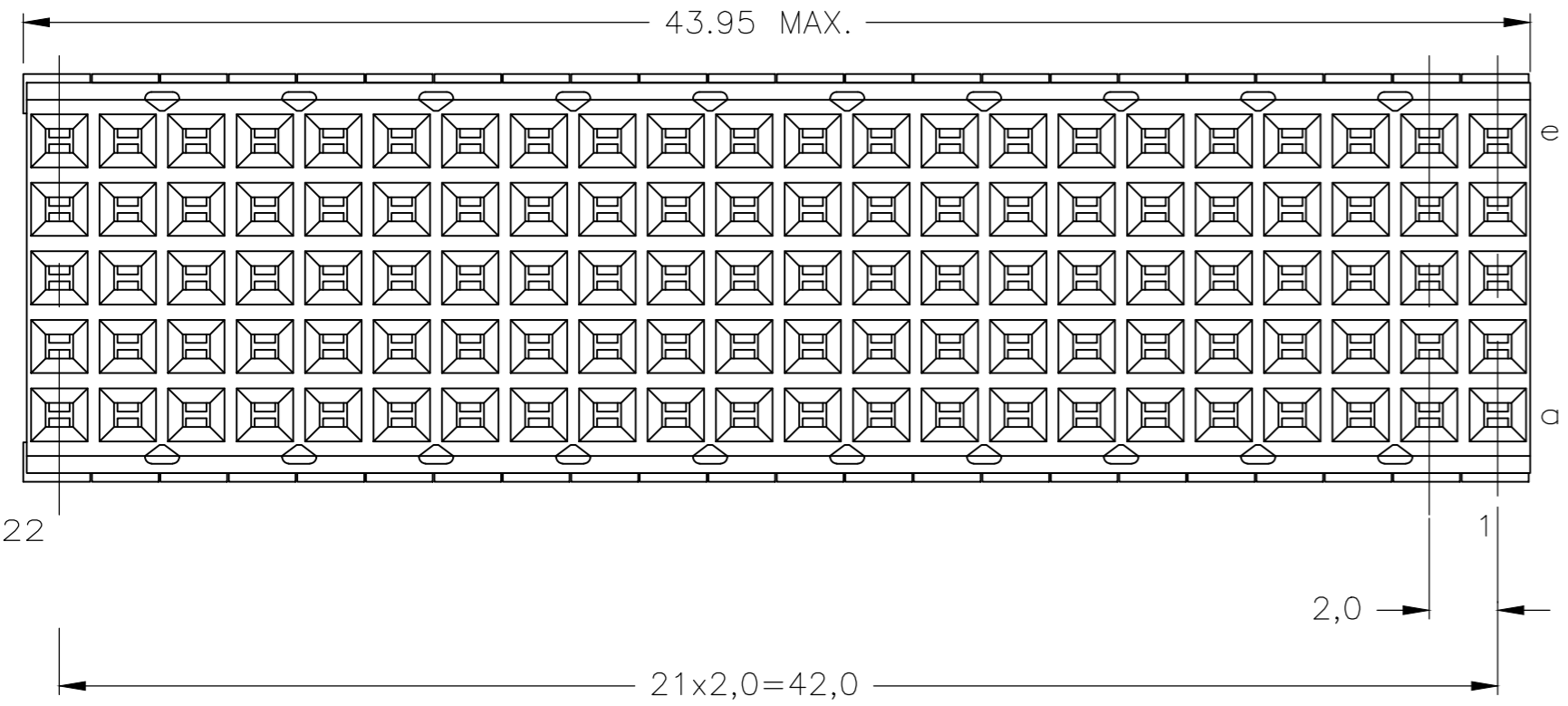
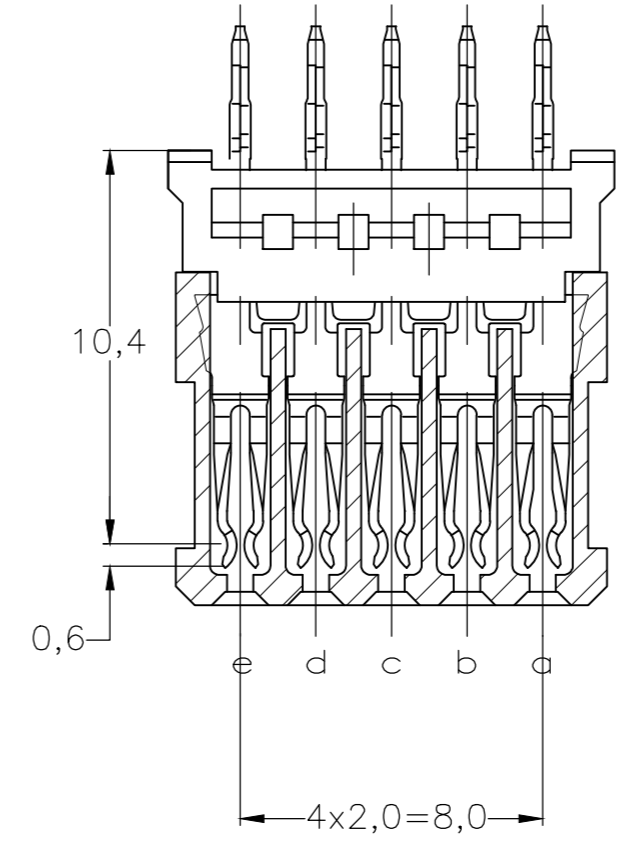
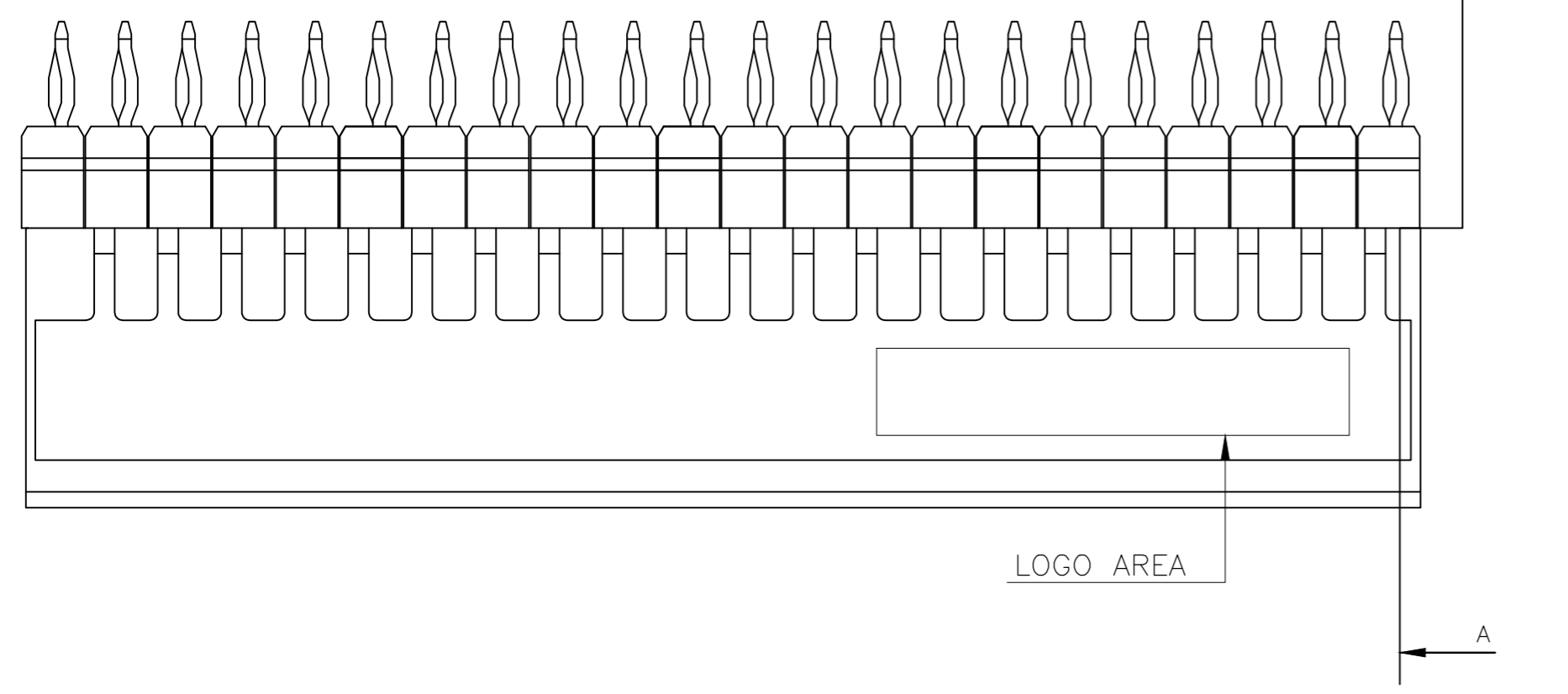
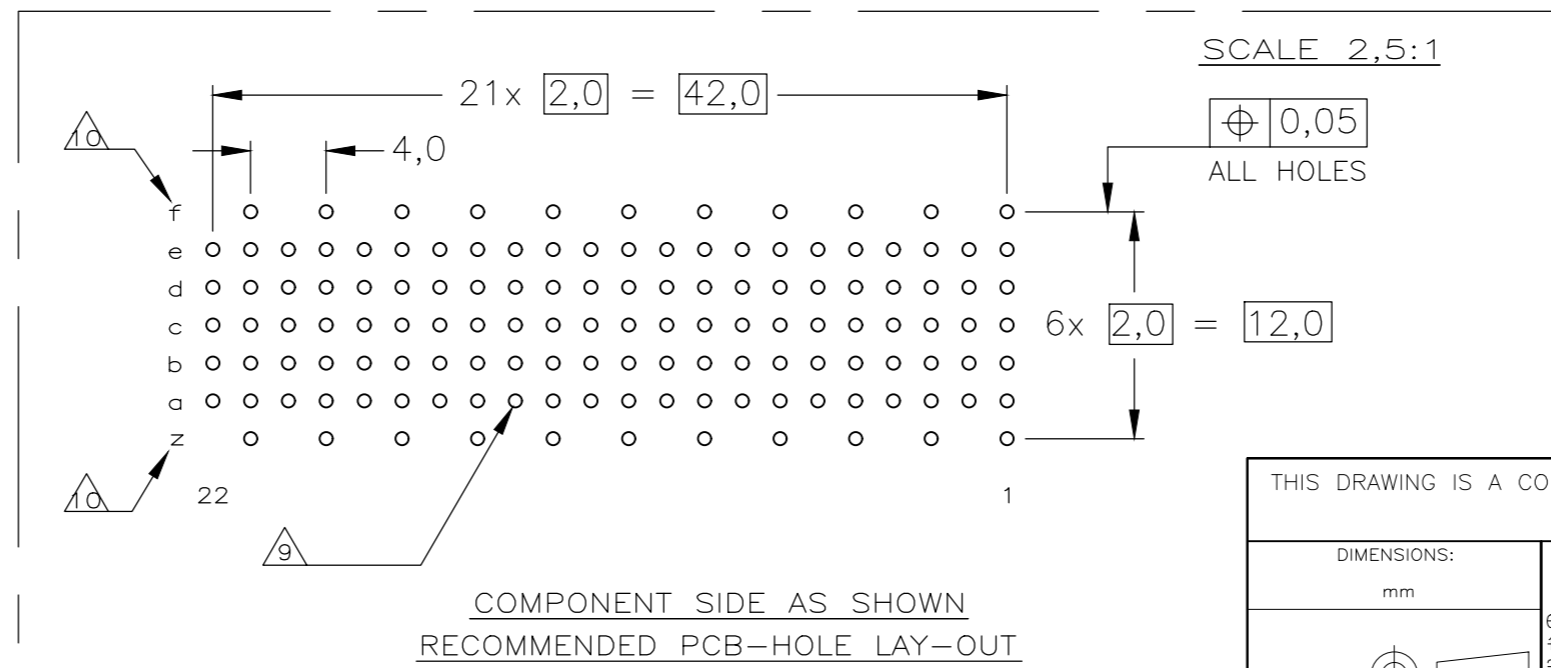


THIS DRAWING IS UNPUBLISHED. RELEASED FOR PUBLICATION  
 © COPYRIGHT - By - ALL RIGHTS RESERVED.

REVISIONS				
P	LTR	DESCRIPTION	DATE	APVD
F		REVISED PER ECO-19-002730	02AUG2019	A.S H.L



- NOTES:**
- ⚠ MATERIAL CONTACT: PHOSPHORBRONZE  
MATERIAL HOUSING: GLASSFILLED POLYESTER  
UL-RATING 94V0 (GRAY).
  - ⚠ GENERAL PLATING SPECIFICATION: UNDERPLATING (ENTIRE CONTACT):  
1,27µm NICKEL MIN. AND ACTION PIN: 0,5µm TIN MIN.  
FOR PLATING OF MATING SURFACES SEE APPLICABLE  
SPECIFICATION REFERENCE FOR EACH DASH NUMBER.
  - ⚠ CONFORMS TO ALL TESTING ACCORDING IEC 61076-4-101  
PERFORMANCE LEVEL 2.
  - ⚠ CONFORMS TO ALL TESTING ACCORDING IEC 61076-4-101  
PERFORMANCE LEVEL 1.
  - ⚠ CONNECTOR TESTED AND QUALIFIED AGAINST TELCORDIA GR-1217-CORE  
QUALITY LEVEL III, CENTRAL OFFICE APPLICATIONS.
  - ⚠ CONNECTOR TESTED AND QUALIFIED AGAINST TELCORDIA GR-1217-CORE  
QUALITY LEVEL III, UNCONTROLLED ENVIRONMENT APPLICATIONS.
  - ⚠ CONNECTOR LUBRICATED WITH TELCORDIA GR-1217-CORE  
APPROVED LUBRICANT.
  - ⚠ CONNECTOR PRINTED WITH PARTNUMBER AND DATECODE.
  - ⚠ PLATED-THROUGH HOLES AT 2x2mm SQUARE GRID (110 HOLES).
  - ⚠ HOLES IN ROW f AND z FOR POSSIBLE FUTURE USE OF  
GROUND RETURN SHIELD. (SHIELDS NOT YET TOOLED)
  - ⚠ OBSOLETE PARTS: OBSOLETE CIS STREAMLINING PER D.RENAUD/D.SINISI



P.C.B. HOLE DIM. ACTION PIN  
FOR DETAILS SEE  
APPLICATION SPECIFICATION

THIS DRAWING IS A CONTROLLED DOCUMENT.		DWN	23AUG2004
DIMENSIONS: mm		CHK	27OCT2004
TOLERANCES UNLESS OTHERWISE SPECIFIED:		APVD	27OCT2004
6-PLG	±	NAME	
1-PLG	±	K.N.KIRAN	
2-PLG	±	B.MOOIJ	
3-PLG	±	PRODUCT SPEC	
4-PLG	±	108-19082	
ANGLES	±	APPLICATION SPEC	
FINISH	-	114-19029	
MATERIAL	-	WEIGHT	
		0.000000	
CUSTOMER DRAWING		SCALE 5:1	

OBSOLETE	⚠ 6	⚠	1-5352268-9
	⚠ 5	⚠	-5352268-9
	⚠ 4	⚠	-5352268-4
	⚠ 3	⚠	5352268-1
FINISH		MATERIAL	
PARTNUMBER			

		TE Connectivity	
		Z-PACK 2mm HM TYPE B 110 POS. 22 COLUMNS VERTICAL FEMALE CONNECTOR ASSEMBLY	
SIZE	CAGE CODE	DRAWING NO	RESTRICTED TO
A2	00779	C=5352268	-
SHEET		REV	
1 of 1		F	

单击下面可查看定价，库存，交付和生命周期等信息

[>>TE Connectivity\(泰科\)](#)