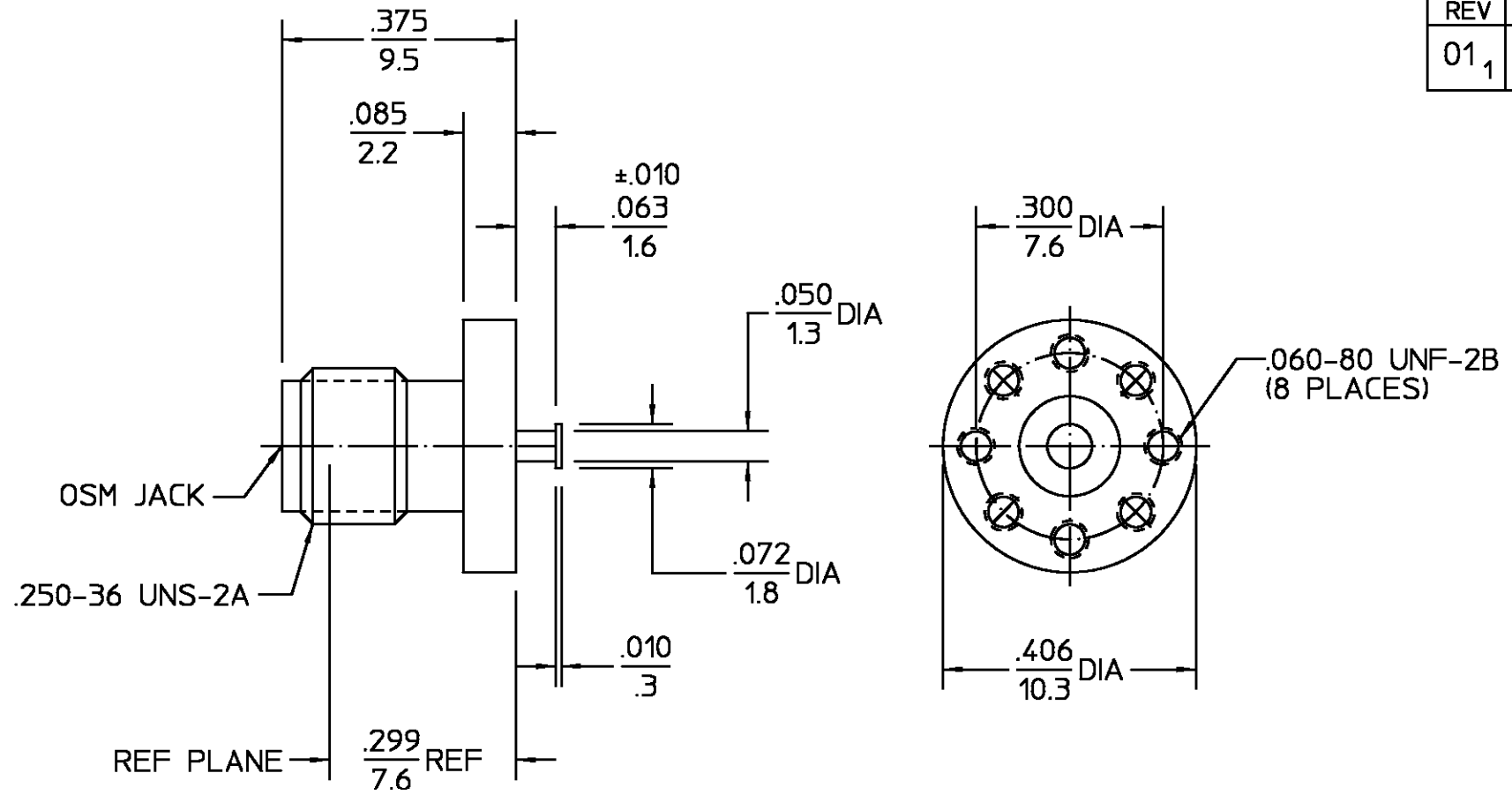


REVISIONS			
REV	DESCRIPTION	DATE	APPROVED
01 <sub>1</sub>	REVISED	11/1/95	DCM 5/6/96



ELECTRICAL	MECHANICAL	ENVIRONMENTAL
Nominal Impedance (Ohms) <u>50</u>	Interface Dimensions <u>MIL-STD-348, FIG. 310.2</u>	Temperature Rating <u>-65°C TO 125°C</u>
Frequency Range (GHz) <u>DC-18</u>	Recommended Mating Torque <u>7-10 IN-Lbs</u>	Vibration - MIL-STD-202, Method 204, Condition B
Volt Rating (VRMS MAX) <u>335</u>	Mating Characteristics: Insertion (MAX Lbs) <u>3</u>	Shock - MIL-STD-202, Method 213, Condition I
VSWR <u>1.05±.005 X f(GHz)</u>	Withdrawal (MIN Oz) <u>1</u>	Thermal shock - MIL-STD-202, Method 102, Condition B
Insertion Loss (dB MAX) <u>.03√x f(GHz)</u>	Connector Engagement and Disengagement (In/Lbs MAX) <u>2</u>	Moisture Resistance - MIL-STD-202, Method 106, Except Step 7b (Vibration) Shall Be Omitted
RF Leakage <u>-(60 - f(GHz))</u>	Center Contact Captivation: Axial <u>N/A</u>	Corrosion - MIL-STD-202, Method 101, Condition B
Corona, 70,000 Ft (VRMS MIN) <u>250</u>	Radial <u>N/A</u>	
Dielectric Withstanding Voltage (VRMS MIN) <u>1000</u>	Cable Retention <u>N/A</u>	
Contact Resistance (Milliohms MAX) Center Contact <u>3</u>	Weight (Grams) <u>1.9</u>	
Outer Contact <u>2</u>		
RF High Potential (VRMS MIN @ 5 MHz) <u>670</u>		
I.R. (Megohms) <u>10,000</u>		

COMPONENT	MATERIAL	FINISH
HOUSING	STAINLESS STEEL PER ASTM-A484 AND ASTM- A582, TYPE 303	GOLD PLATE PER MIL-G-45204
DIELECTRIC	TFE FLUOROCARBON PER ASTM-D-1457	N/A
CENTER CONTACT	BERYLLIUM COPPER PER ASTM-B-196 OR ASTM-B-197 ALLOY C17300, COND H	GOLD PLATE PER MIL-G-45204

UNLESS OTHERWISE SPECIFIED DIMENSIONS ARE IN INCHES TOLERANCE ON	DATE <u>6/6/67</u>	/ AMP Incorporated 140 Fourth Avenue Waltham, MA 02451-7599
FRAC DEC ANGLES ± 1/64 ±.005 ± °	CHECKED BY <u>P.R.B</u> DATE <u>6/7/67</u>	
	APPROVED BY <u>D.NANIA</u> DATE <u>6/7/67</u>	

USE ASSY PROCEDURE	TITLE OSM SURFACE LAUNCH JACK STRIPLINE TURRET TERMINAL
NO. AP. <u>N/A</u>	SIZE <u>B</u>
	CODE IDENT NO. <u>26805</u>
	<u>2066-1322-00</u>
	REV <u>01<sub>1</sub></u>
	SCALE <u>5:1</u>
	SHEET 1 OF 1

.XXX = in  
XX.X = mm

These drawings and specifications are the property of M/A-COM Incorporated and shall not be reproduced or copied or used in whole or in part as the basis for the manufacture or sale of item(s) without written permission.

CUSTOMER DRAWING

AMP PART # 1053404-1  
SHEET 1 OF 1 REV A

单击下面可查看定价，库存，交付和生命周期等信息

[>>TE Connectivity\(泰科\)](#)