

THIS DRAWING IS UNPUBLISHED.

RELEASED FOR PUBLICATION

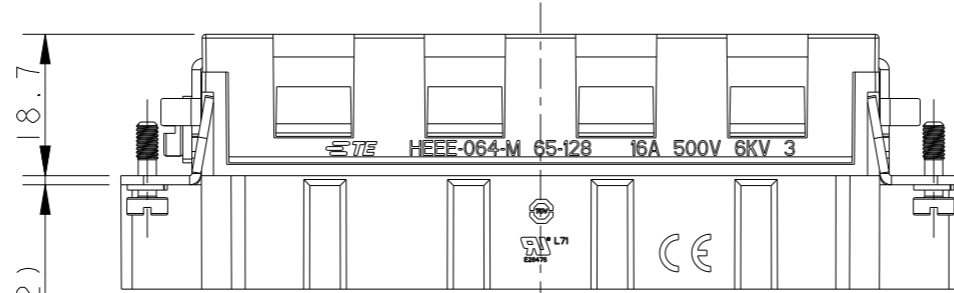
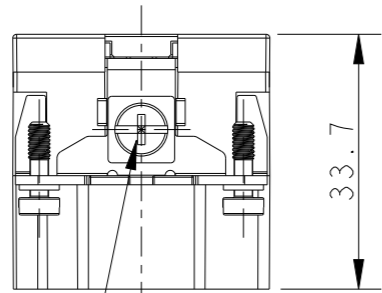
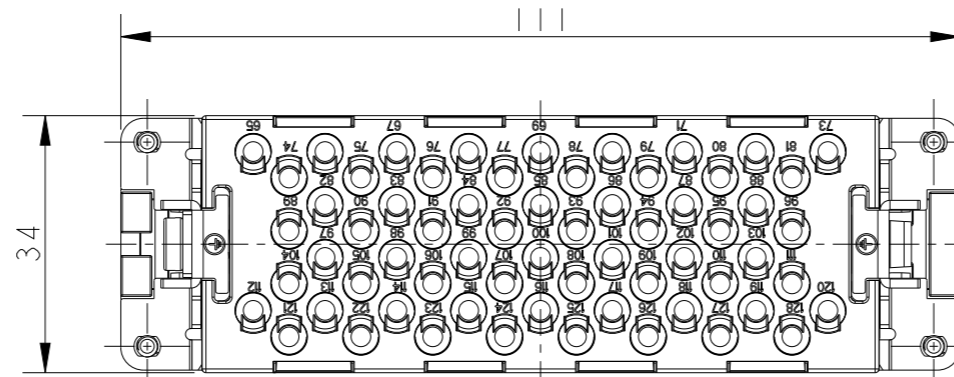
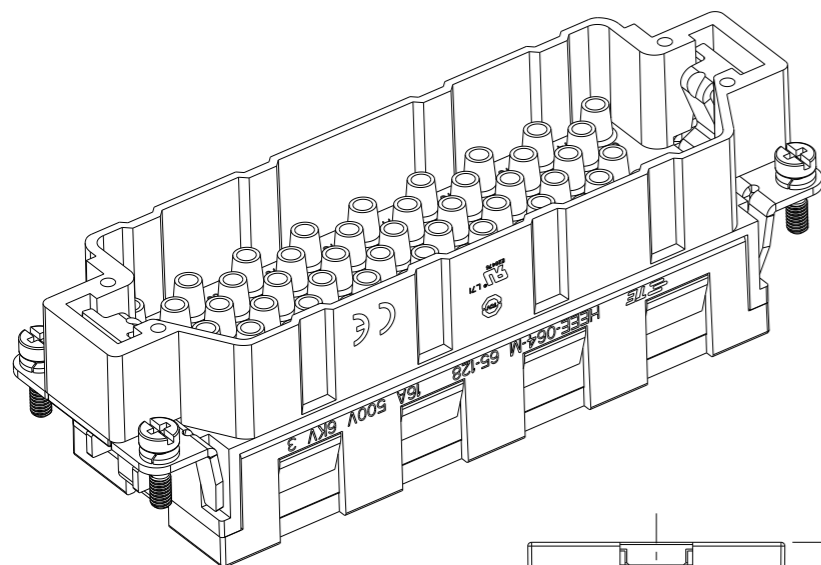
20

© COPYRIGHT 20 BY -

ALL RIGHTS RESERVED.

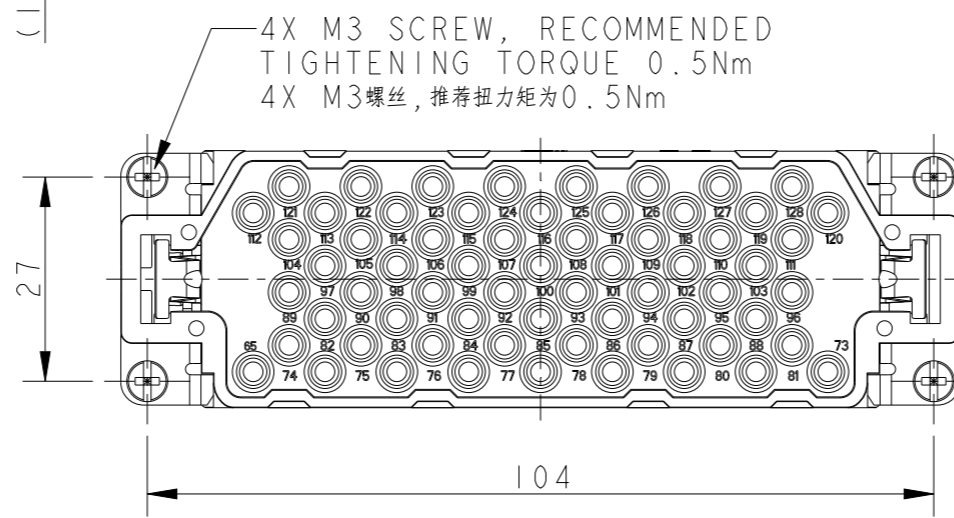
REVISIONS

P	LTR	DESCRIPTION	DATE	DWN	APVD
A		INITIAL RELEASE	01DEC2016	DL	CW
B		ECR-21-111798	03SEP2021	WQR	CW

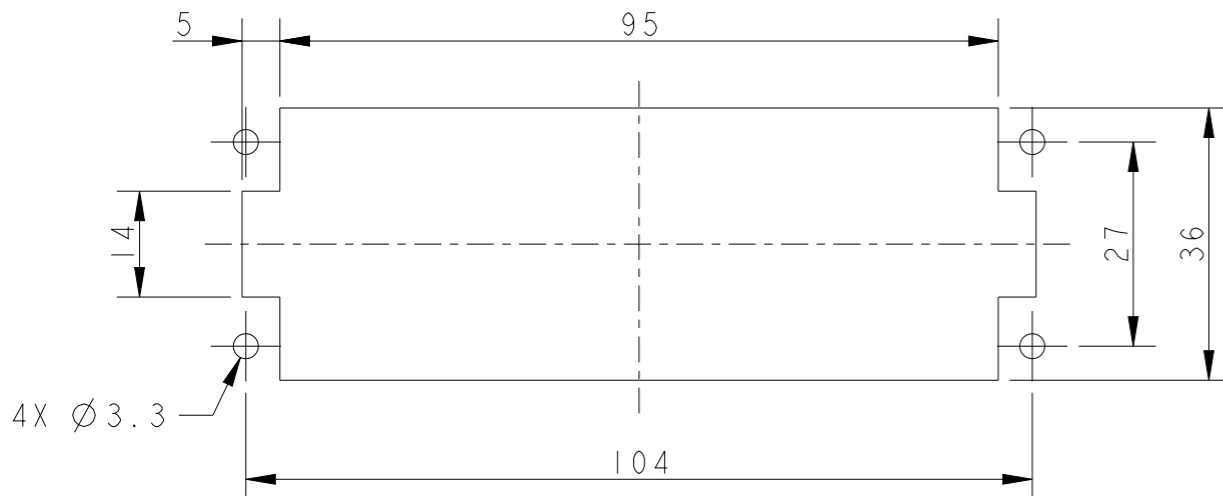


NOTES:
 1. TECHNICAL CHARACTERISTICS:
 INSULATION MATERIAL: PC
 RATED VOLTAGE: 500V
 RATED CURRENT: 16A
 INSULATION RESISTANCE: $\geq 400M\Omega$
 RATED IMPULSE VOLTAGE: 6KV
 POLLUTION DEGREE: 3
 FLAMMABILITY: UL94V-0
 MATING CYCLES: 500 CYCLES
 WIRE RANGE: 0.14mm²~4mm² (AWG26-AWG12)
 CONTACT TYPE: CRIMP CONTACT
 2. CONTACTS NEED TO BE ORDERED SEPARATELY.
 (ORDER No. REFER TO DRAWING: T20300X10XX000)

M4 SCREW, RECOMMENDED
 TIGHTENING TORQUE 1.2Nm
 M4螺丝, 推荐扭力矩为1.2Nm




注释:
 1. 技术参数:
 绝缘材料: PC
 额定电压: 500V
 额定电流: 16A
 绝缘电阻: $\geq 400M\Omega$
 脉冲电压: 6KV
 污染等级: 3
 阻燃等级: UL94V-0
 插拔次数: 500次
 接线范围: 0.14mm²~4mm² (AWG26-AWG12)
 接线类型: 冷压接
 2. 端子需要单独订购.
 (订货号参考图面: T20300X10XX000)



PANEL CUT OUT DIMENSION FOR INSERT
 WITHOUT HOOD/HOUSING, ONLY FOR REFERENCE
 不使用防护外壳时芯件的开孔安装尺寸, 仅供参考

T2051283101-000	HEEE-064-M 65-128	HEEE-064 MALE INSERT, 65-128 HEEE-064 公插, 65-128
PART NUMBER 料号	PART DESCRIPTION 描述	

THIS DRAWING IS A CONTROLLED DOCUMENT.		DWN 01DEC2016 DAVID LI	 TE Connectivity NAME HEEE-064-M 65-128		
DIMENSIONS: mm		CHK 01DEC2016 CHRIS WANG			PRODUCT SPEC 108-137068
TOLERANCES UNLESS OTHERWISE SPECIFIED:		APVD 01DEC2016 XIANG XU			APPLICATION SPEC 114-137068
0 PLC ±- 1 PLC ±- 2 PLC ±- 3 PLC ±- 4 PLC ±- ANGLES ±- MATERIAL - FINISH -		WEIGHT -			RESTRICTED TO -
Customer Drawing		SIZE A3	CAGE CODE 00779	DRAWING NO. T2051283101000	
		SCALE 1:1	SHEET 1 OF 1	REV B	

单击下面可查看定价，库存，交付和生命周期等信息

[>>TE Connectivity\(泰科\)](#)