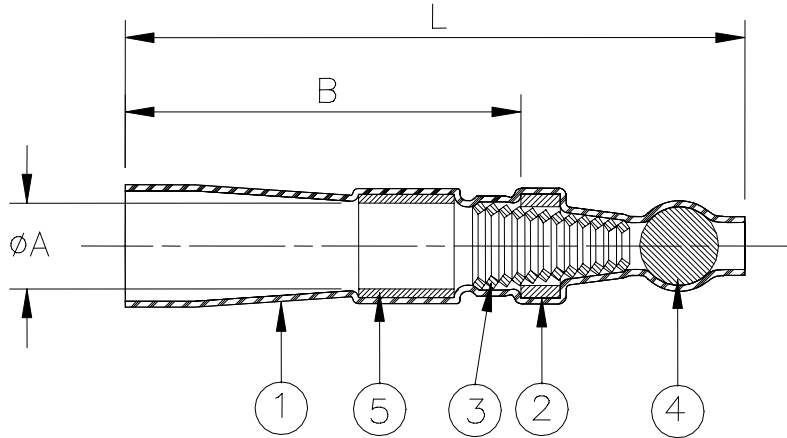


SPECIFICATION CONTROL DRAWING



Product Name	Ball Color	Copper Cross Section		Bundle Diameter		Product Dimensions		
		Min mm ² (CMA)	Max mm ² (CMA)	ϕD Max	M \pm 1 (M \pm 0.04)	ϕA	L	B
B-067-31	Green	0.7 (1400)	2.4 (4800)	3.3(0.130)	15(0.590)	3.6	38.3	26
B-067-32	Red	2.0 (4000)	4.0 (8000)	4.5(0.175)	15(0.590)	5	37.7	23.5
B-067-33	Blue	3.5 (7000)	8.0 (16000)	7.0(0.275)	15(0.590)	7.5	45.5	26.5
B-067-34	Yellow	7.5 (15000)	12.0 (24000)	9.0(0.350)	15(0.590)	9.4	45.0	25.5

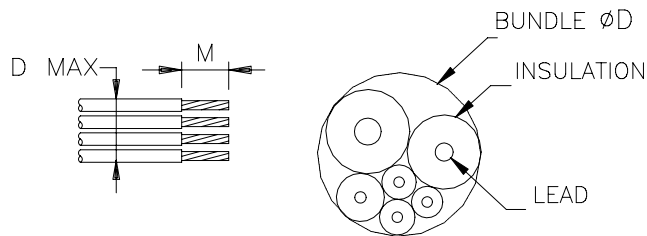
MATERIALS

1. INSULATION SLEEVE: Heat-shrinkable, transparent blue, radiation cross-linked modified polyvinylidene fluoride.
2. SOLDER PREFORM WITH FLUX:
SOLDER: TYPE Sn60 per ANSI-J-STD-006.
FLUX: TYPE ROM1 per ANSI-J-STD-004.
3. CONICAL SPRING: Square copper wire.
4. END CLOSURE BALL: Tinted glass. Color: see table.
5. SEALING INSERT: Hot melt adhesive.

APPLICATION

1. These controlled soldering devices are designed for stub splicing of stranded wires, with bare copper conductors and an insulation rated for 85°C minimum and 125°C continuous maximum.
2. Temperature range: Class 3, -40°C to +125°C.
3. Vibration range: Class 1 (body).
4. Seal range: Class 2 (watertight against immersion). Immersion resistant sealing is dependent on the wire combinations used. The user should test specific wire combinations. Refer to Raychem specification RB109 for procedures.
5. For installation procedure and application equipment, consult RPIP-820-00-D.

For best results, prepare the cable as shown:



* A trademark of Raychem Corporation.

tyco Electronics		Tyco Electronics Corporation 300 Constitution Drive, Menlo Park, CA. 94025, U.S.A.		<i>Raychem</i>		TITLE: SOLDERSLEEVE DEVICE STUB SPLICE	
Unless otherwise specified dimensions are in millimeters. [Inches dimensions are shown in brackets]				DOCUMENT NO.: B-067-3X			
TOLERANCES: 0.00 N/A 0.0 N/A 0 N/A		ANGLES: N/A		Tyco Electronics reserves the right to amend this drawing at any time. Users should evaluate the suitability of the product for their application.			
		ROUGHNESS IN MICRON					
DRAWN BY: P.TALLY		CAGE CODE: 06090		REPLACES: D981801		DCR NUMBER: D060342	
				SCALE: NTS		SIZE: A	
						SHEET: 1 of 1	

© 2006 Tyco Electronics Corporation. All rights reserved.

If this document is printed it becomes uncontrolled. Check for the latest revision.

单击下面可查看定价，库存，交付和生命周期等信息

[>>TE Connectivity\(泰科\)](#)