

NOTES:

1. MATERIAL:

- A) BACKSHELL COPPER ALLOY 172 PER QQ-A-533.
- B) BACKSHELL SCREW STAINLESS STEEL PER QQ-S-763, 300 SERIES
- C) CLAMP BAR STAINLESS STEEL PER QQ-S-766, 300 SERIES
- D) TRANSITION ALUMINUM ALLOY PER QQ-A-356.
- E) CLAMP SCREW STAINLESS STEEL PER QQ-S-766, 300 SERIES
- F) TINEL™ LOCK RING ALLOY X

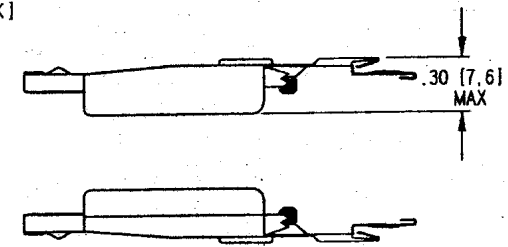
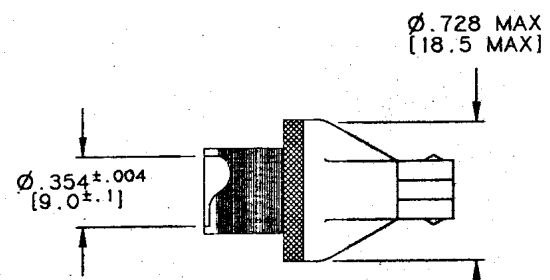
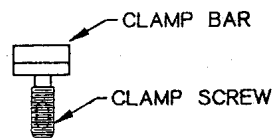
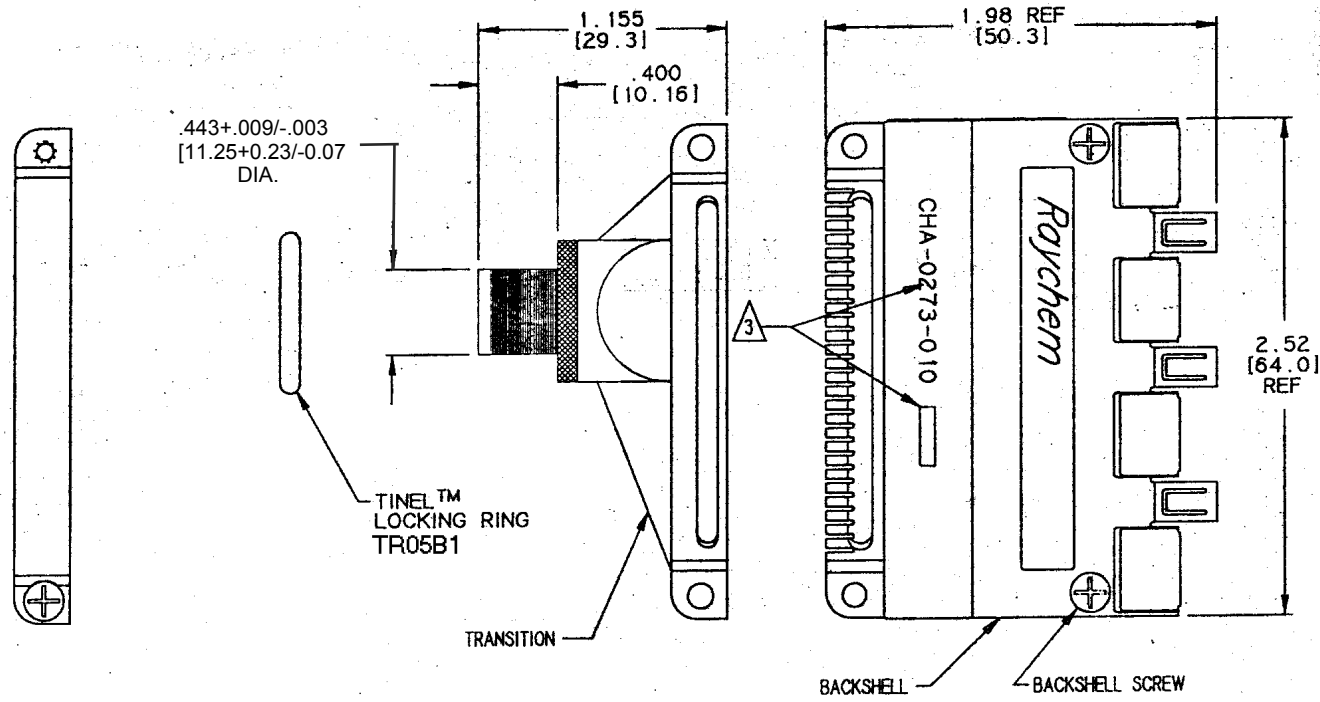
2. FINISH:

- A) BACKSHELL CADMIUM PLATED PER QQ-P-416
- B) BACKSHELL SCREW CADMIUM PLATED PER QQ-P-416
- C) CLAMP BAR CADMIUM PLATED PER QQ-P-416
- D) TRANSITION CADMIUM PLATED PER QQ-P-416
- E) CLAMP SCREW CADMIUM PLATED PER QQ-P-416
- F) TINEL™ LOCK RING AS MANUFACTURED

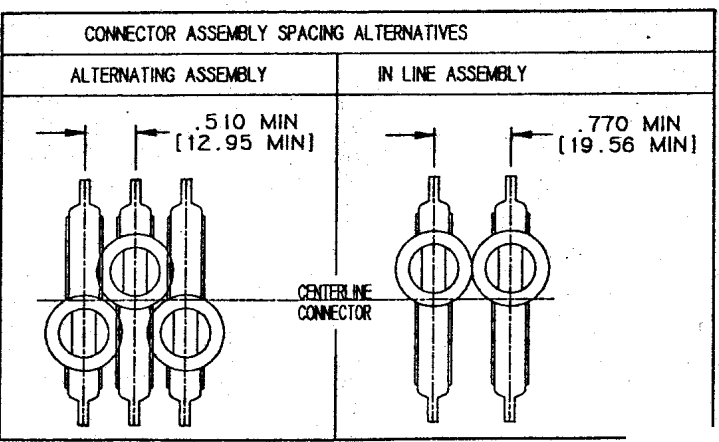
3. RAYCHEM PART NUMBER CHA-0273-010 AND DATE CODE ARE STAMPED APPROXIMATELY AS SHOWN.

4. THIS PRODUCT HAS NOT BEEN QUALIFIED TO RAYCHEM SPECIFICATION C-6111 AND C-6119. IT IS THE USERS RESPONSIBILITY TO QUALIFY IT FOR THE USERS APPLICATION.

REVISIONS		DATE	APPROVED
LTR	DESCRIPTION		
NC	RELEASED PER ECN T-17877	92NOV11	ZET
A	REVISED PER ECN T-18422	93AUG 27	<i>[Signature]</i>
B	REVISED PER DCR# T-23830	12/15/99	M.HIGGY
C	REV PER ECO 15-017642	CT 1-27-16	CD



If this document is printed it becomes uncontrolled. Check with the web for latest revision.



SPECIFICATION CONTROL DRAWING © Raychem Corp. 1992

UNLESS OTHERWISE SPECIFIED DIMENSIONS ARE IN INCHES. AND TOLERANCES ARE: DEC .XXX ± .010 DEC .XX ± .02 ANGLE	DRAWN D. PIQUE'	DATE 92OCT07	Raychem RAYCHEM CORPORATION 300 CONSTITUTION DRIVE MENLO PARK, CALIFORNIA 94025
	CHECKED	DATE	
MATERIAL	APPROVED <i>[Signature]</i>	DATE 93 AUG 24	TITLE BACKSHELL, PLUG, 2" ROUND WIRE OFFSET, CADMIUM PLATED MTC SERIES
FINISH	THIRD ANGLE PROJECTION		SIZE C
	CAD NAME		CODE IDENT. NO. 06090
	P.C.N.		DWG. NO. CHA-0273-010
			REV C

单击下面可查看定价，库存，交付和生命周期等信息

[>>TE Connectivity\(泰科\)](#)