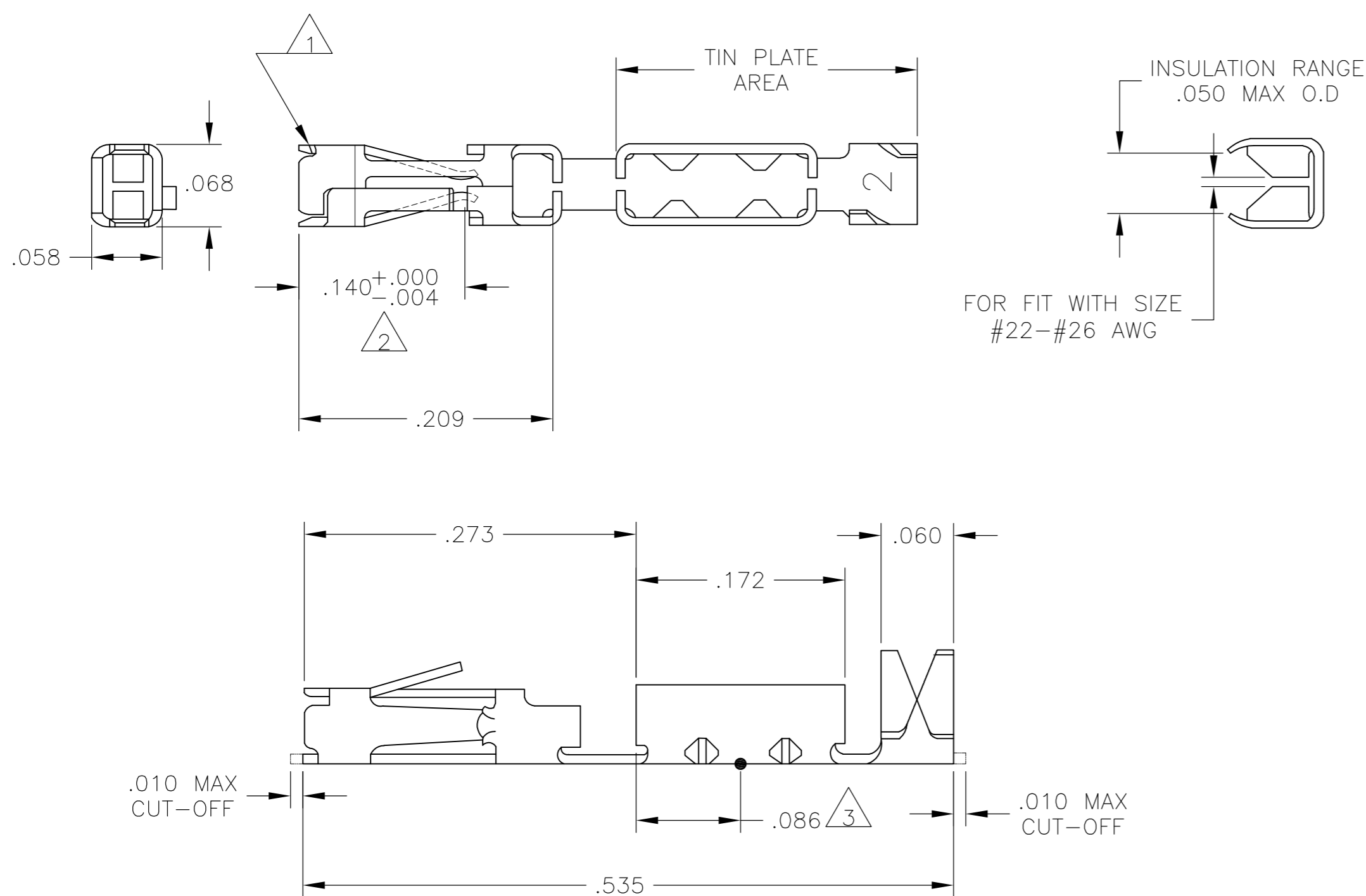


THIS DRAWING IS UNPUBLISHED. RELEASED FOR PUBLICATION  
 © COPYRIGHT - By - ALL RIGHTS RESERVED.

LOC	DIST	REVISIONS			
P	LTR	DESCRIPTION	DATE	DWN	APVD
AD	00	H	REVISED PER ECO-15-008006	17NOV2015	NK MM



- △1 CUT OUTS ON BOX AT MANUFACTURERS OPTION
- △2 POINT OF MEASUREMENT FOR PLATING THICKNESS (INSIDE BEAMS)
- △3 POINT OF MEASUREMENT FOR PLATING THICKNESS (OUTSIDE BOTTOM)

	.000003 GOLD IN CONTACT AREA, .000050 MIN TIN IN AREA SHOWN, ALL OVER .000050 NICKEL	5-102399-1
OBSOLETE	.000050 MIN W.E #1 GOLD ALLOY IN CONTACT AREA. .000050-.000100 TIN-LEAD IN AREA SHOWN ALL OVER .000050 NICKEL	<del>1-102399-8</del>
SUPERCEDED BY 102399-3	.000100-.000200 BRIGHT TIN OVER .000050 NICKEL	<del>102399-9</del>
OBSOLETE	.000015 GOLD IN CONTACT AREA, .000050 MIN TIN-LEAD IN AREA SHOWN, ALL OVER .000050 NICKEL	<del>102399-6</del>
	.000030 GOLD IN CONTACT AREA, .000050 MIN TIN-LEAD IN AREA SHOWN, ALL OVER .000050 NICKEL	102399-3
	PLATING	PART NO LOOSE PIECE

THIS DRAWING IS A CONTROLLED DOCUMENT.		DWN B S VISWESWARA 26MAY05	<b>STE</b> TE Connectivity	
DIMENSIONS: INCHES		CHK D ROHDE 26MAY05		
TOLERANCES UNLESS OTHERWISE SPECIFIED:		APVD D ROHDE 26MAY05	NAME	
0 PLC ± -		PRODUCT SPEC	CONTACT- MOD IV MASS TERMINATION AMPMODU #22 - #26 AWG WIRE SIZE	
1 PLC ± -		APPLICATION SPEC	SIZE	RESTRICTED TO
2 PLC ± -			CAGE CODE	DRAWING NO
3 PLC ± .005			A2 00779	102399
4 PLC ± -			SCALE	SHEET
ANGLES ± -		WEIGHT	10:1	1 of 1
FINISH		CUSTOMER DRAWING	REV	H
SEE TABLE				

单击下面可查看定价，库存，交付和生命周期等信息

[>>TE Connectivity\(泰科\)](#)