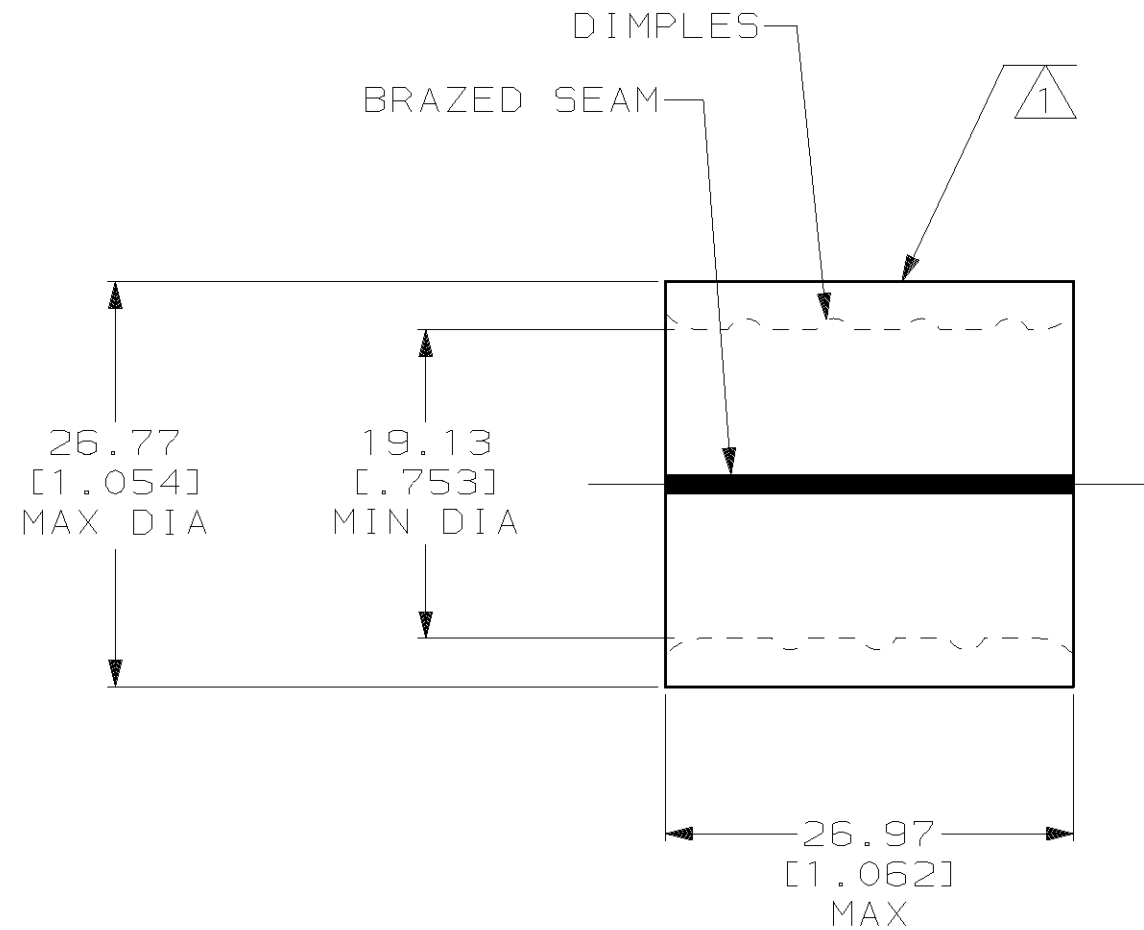


THIS DRAWING IS UNPUBLISHED. RELEASED FOR PUBLICATION, 19 .
 © COPYRIGHT 19 BY AMP INCORPORATED. ALL INTERNATIONAL RIGHTS RESERVED.

LOC	DIST	P	F	ZONE	LTR	DESCRIPTION	DATE	APPD
G	14				C	REV PER 063A-0435-02	30SEP02	MS



AMP WIRE RANGE	E13288 Listed
250 MCM STRANDED	250 MCM STRANDED
LR7189 Certified	MILITARY P/N AND CLASS
250 MCM STRANDED	NOT APPLICABLE

- 1 STAMP AMP W* 250-300 MCM LOCATE APPROX AS SHOWN
- 2 MATERIAL THK: 3.20^{±0.10} [.126^{±.004}]
- 3 STAMP FOR MANUFACTURING LOCATION OR CODE PERMISSIBLE.

**AMP INCORPORATED
CUSTOMER SERVICE SYSTEMS**

FOR ADDITIONAL PRODUCT INFORMATION OR COPIES OF DRAWINGS AND TECHNICAL DOCUMENTS	PRODUCT INFORMATION CENTER 1-800-522-6752
FOR APPLICATION TOOLING INFORMATION	TOOLING ASSISTANCE CENTER 1-800-722-1111
FOR ORDER ENTRY	1-800-526-5142

MAX RECOMMENDED OPERATING TEMPERATURE: 170°C MAX
VOLTAGE RATING: NOT APPLICABLE
CIRCULAR MIL AREA: 117.1-152.0mm ² [231-300] MCM STRANDED
THIS DRAWING IS A CONTROLLED DOCUMENT FOR AMP INCORPORATED. IT IS SUBJECT TO CHANGE AND THE CONTROLLING ENGINEERING ORGANIZATION SHOULD BE CONTACTED FOR THE LATEST REVISION.

DO NOT SCALE PRINT. UNLESS SPECIFIED DIMENSIONS IN mm [INCHES] TOLERANCES ON: 2 PLC DEC ± 0.20[.008] 3 PLC DEC ± - ANGLES ± -
MATERIAL COPPER PER ASTM B-152 ANNEALED
FINISH TIN PLATE 0.00254[.000100] MIN THK PER MIL-T-10727

DR 5/6/93 DK SCHRUM
CHK 5/14/93 AJ KAUFMAN
APPD 5/14/93 RE ROSER
APPD 5/14/93 CR RHOADS
PRODUCT SPEC -
APPLICATION SPEC -
WEIGHT -

AMP Incorporated Harrisburg, PA 17105-3608		
NAME SPLICE, PARALLEL, SOLISTRAND, WIRE SIZE: 250-300 MCM		
SIZE B	CAGE CODE 00779	DRAWING NO C-322275
SCALE 2:1	SHEET 1 OF 1	

322275
PART NO

单击下面可查看定价，库存，交付和生命周期等信息

[>>TE Connectivity\(泰科\)](#)