

DRAWING MADE IN THIRD ANGLE PROJECTION

3

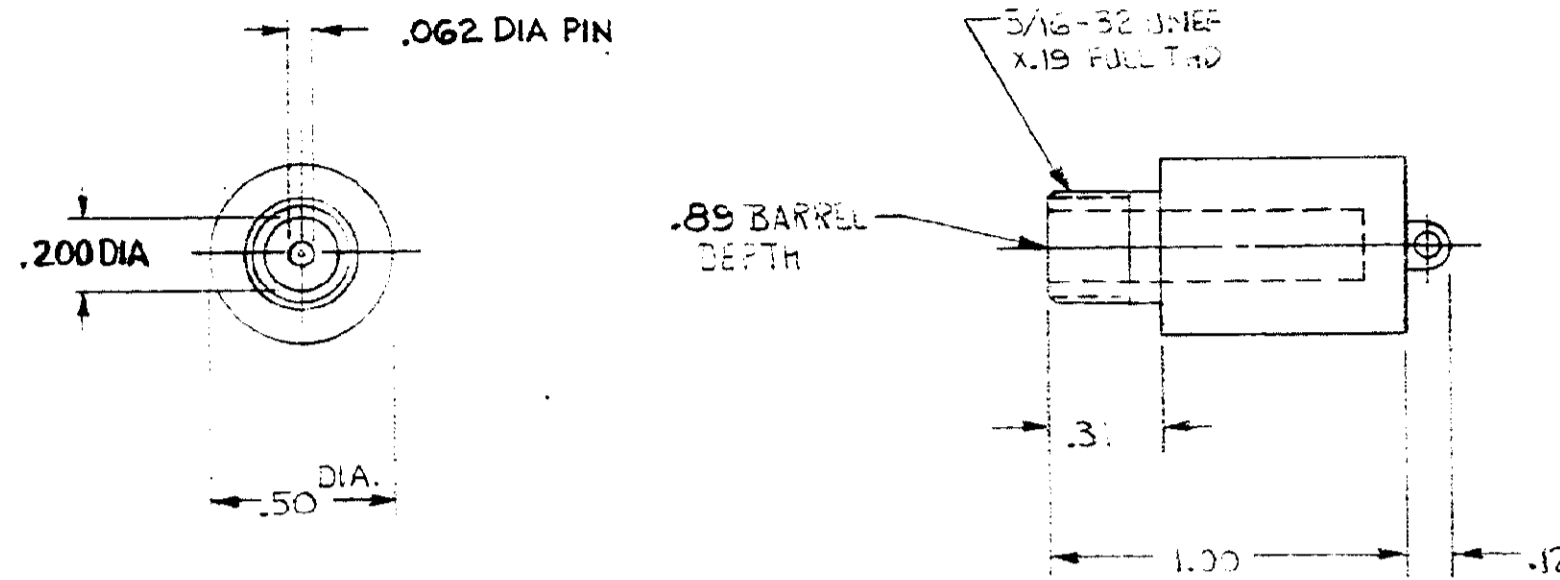
2

1

LOC	DIST
L	37

THIS DRAWING IS UNPUBLISHED. RELEASED FOR PUBLICATION . 19
 © COPYRIGHT 19 BY AMP INCORPORATED, HARRISBURG, PA. ALL INTERNATIONAL RIGHTS RESERVED. AMP PRODUCTS MAY BE COVERED BY U.S. AND FOREIGN PATENTS AND/OR PATENTS PENDING.

REVISIONS						
P	F	ZONE	LTR	DESCRIPTION	DATE	APPROVED
			0	RELEASE. NPR 1401	RPH 4-3-85	SWL



- RECEPTACLE TO MATE WITH AMP LGH 1/2 L LEAD ASSEMBLY. AVAILABLE SEPARATELY.
- SPECIAL HANDLING REQUIREMENTS:
 SPECIAL TESTING: PIN TO GND, 23KVDC @ SEA LEVEL
 ROOM TEMP, MAX LEAKAGE 10pa
 100% TESTING.
 TEST DATA SUPPLIED WITH EACH LOT.

868438-1

PART NO

UNLESS OTHERWISE SPECIFIED DIMENSIONS ARE IN INCHES. TOLERANCES ON: DECIMALS XX±.02 ANGLES XXX±.005	CONTRACT NO	AMP AMP INCORPORATED Harrisburg, Pa. 17105	
	DR <i>R. B. Hapner 3-29-85</i>		
MATERIAL MOLDED GLASS EPOXY	CHK	APPD <i>John W. Gaur 4-3-85</i>	APPD
FINISH BLACK	DSGN APPD	OTHER APPD	SIZE: C FSCM NO: 00779 DRAWING NO: 868438
		SCALE: NTS	SHEET: —

单击下面可查看定价，库存，交付和生命周期等信息

[>>TE Connectivity\(泰科\)](#)