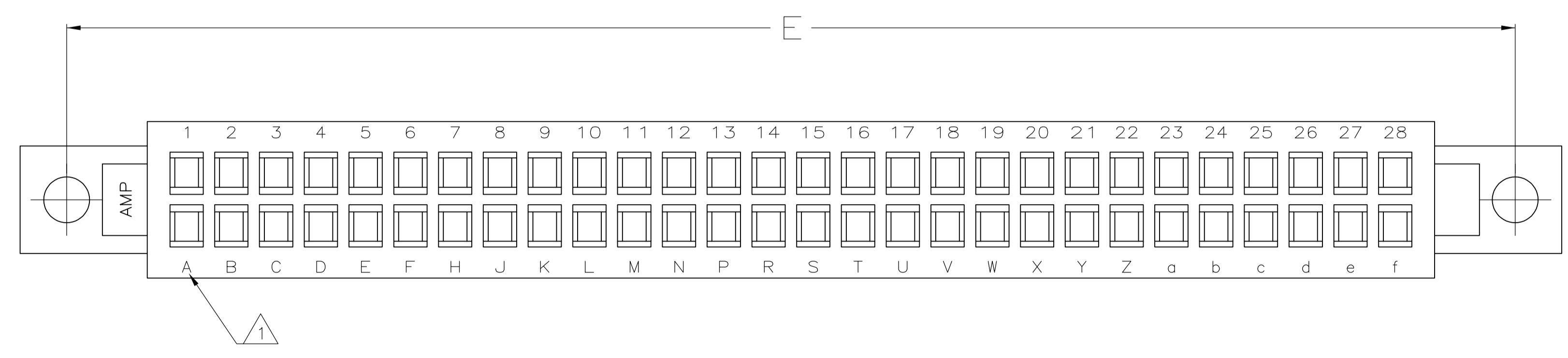
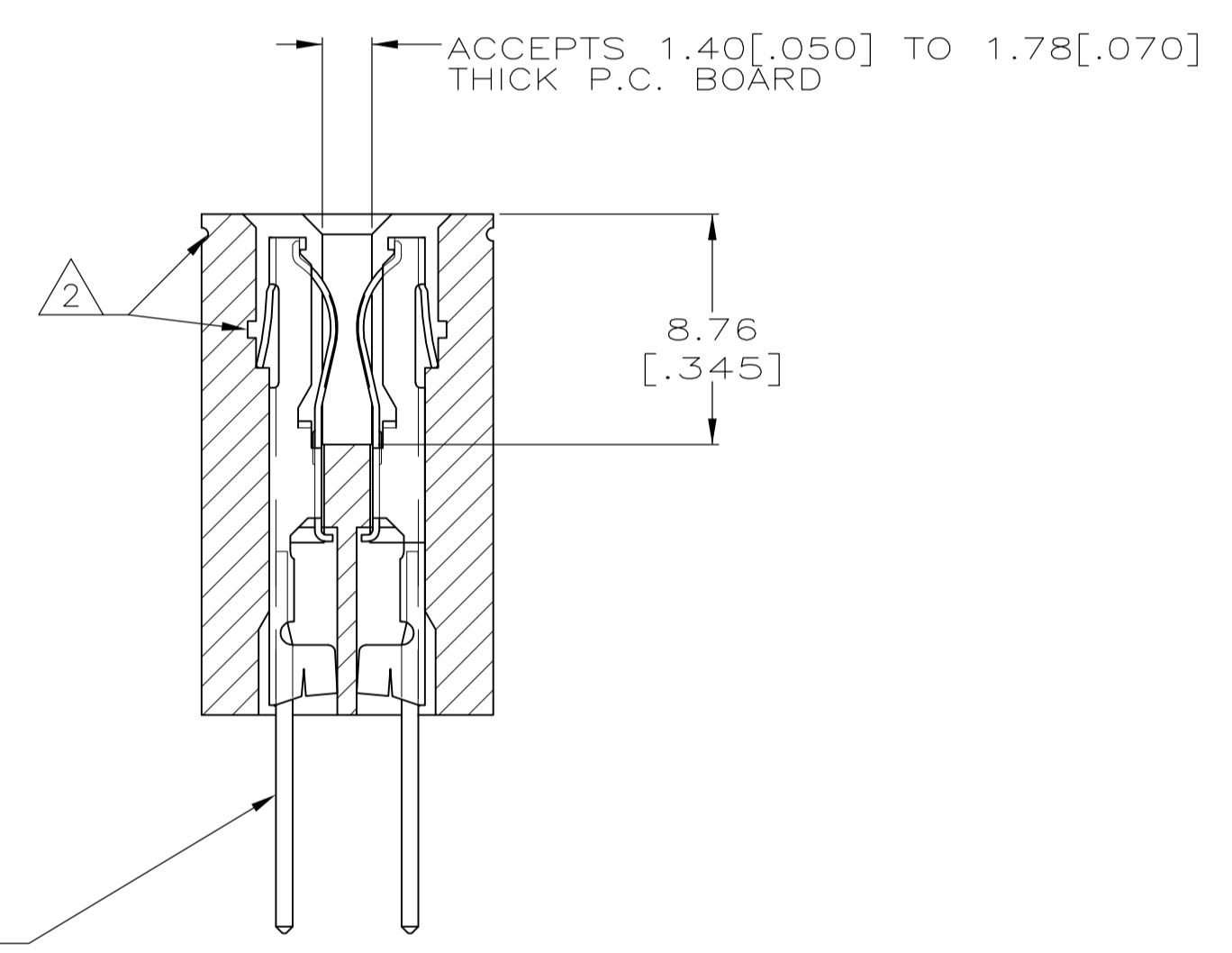
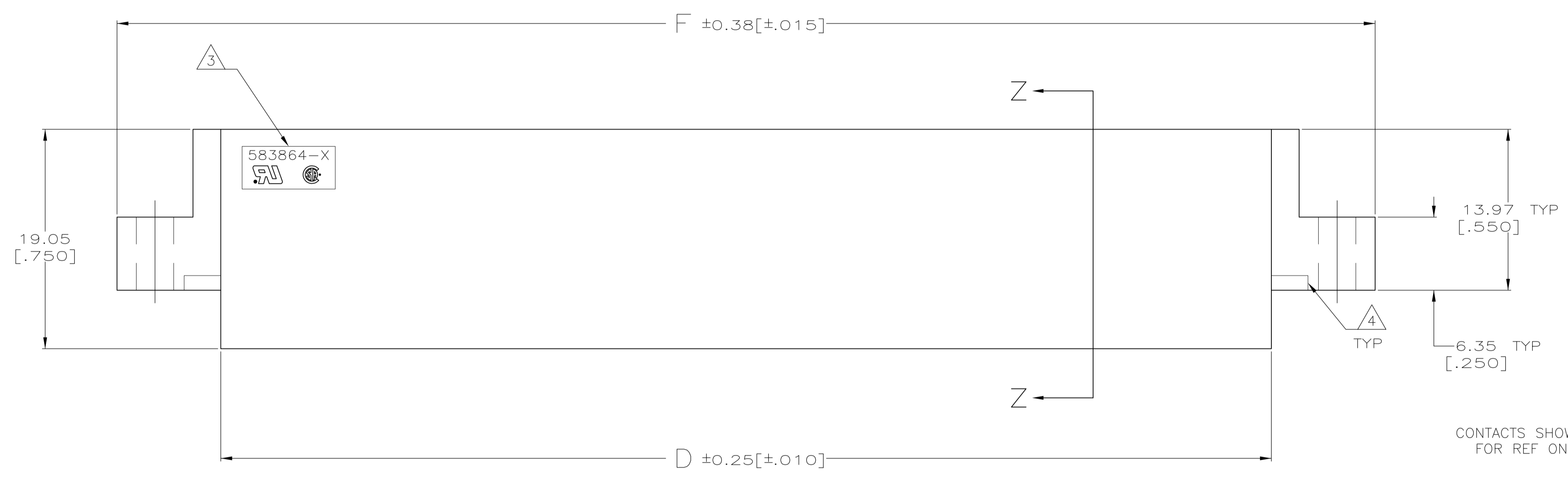
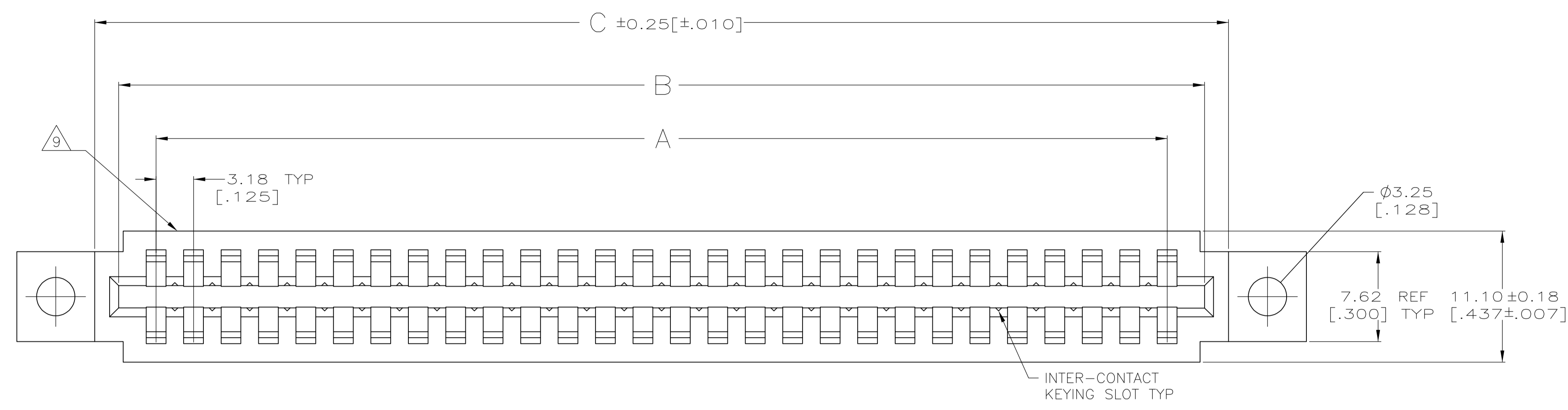
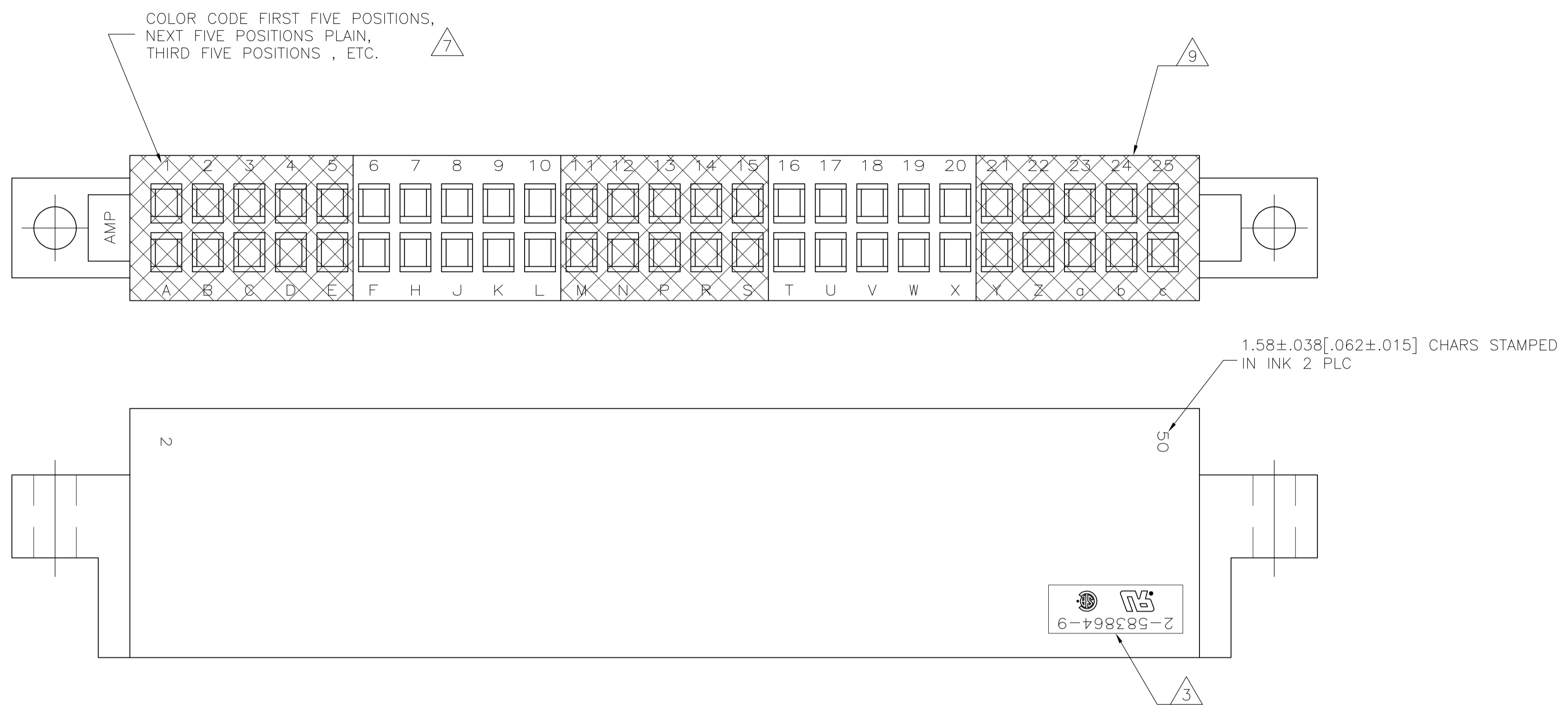


| LOC | | DIST | | REVISIONS | | | |
|-----|-----|---------------------------|---------|-----------|------|--|--|
| P | LTR | DESCRIPTION | DATE | DMN | APVD | | |
| Z1 | | REVISED PER ECO-08-026581 | 30OCT08 | HMR | MM | | |
| Z2 | | REVISED PER ECO-09-021510 | 12SEP09 | KK | AEG | | |

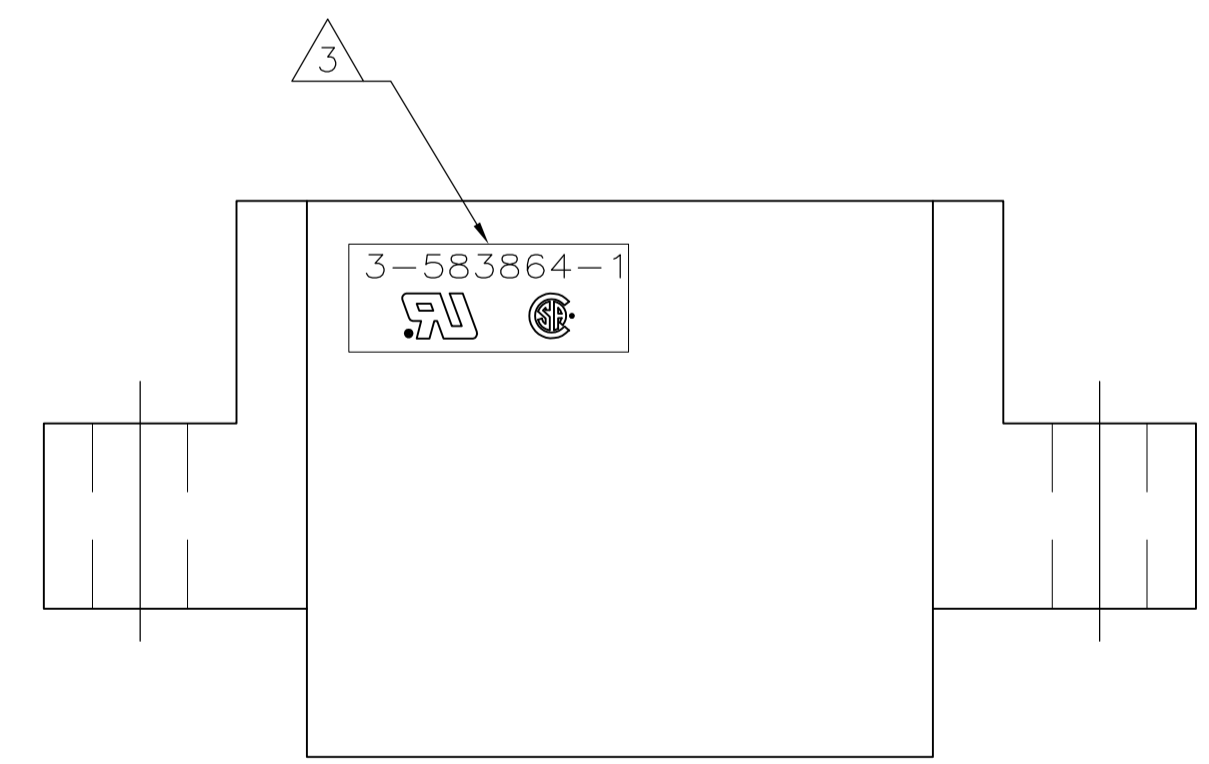


| | | | | | |
|--|---------------|--|--|--|--|
| THIS DRAWING IS A CONTROLLED DOCUMENT. | | DIN J GALLUCCI BG 12-9-92 | | Tyco Electronics Corporation | |
| DIMENSIONS: mm [INCHES] | | TOLERANCES UNLESS OTHERWISE SPECIFIED: | | Tyco Electronics Corporation Harrisburg, PA 17105-3608 | |
| 0. PLC | ± - | APVD H ROSE 3/2/94 | | NAME H ROSE | |
| 1. PLC | ± - | PRODUCT SPEC | | HOUSING, CRIMP SNAP | |
| 2. PLC | ± - | APPLICATION SPEC | | TWIN LEAF, .125 C/L | |
| 3. PLC | ± 0.13 [.005] | SIZE | | WITH MOUNTING EARS | |
| 4. PLC | ± - | WEIGHT | | RESTRICTED TO | |
| ANGLES | ± - | A1 00779 C=583864 | | CUSTOMER DRAWING | |
| MATERIAL: GLASS FILLED POLYESTER, COLOR: BLACK | | FINISH: - | | SCALE: 1:1 SHEET 1 OF 3 REV Z2 | |



- 1 FIRST 22 POSITIONS MARKED WITH UPPER CASE LETTERS, FOLLOWED BY LOWER CASE LETTERS, FOLLOWED BY UPPERCASE AA, AB, AC ETC. CHARACTERS G, I, O AND Q ARE OMITTED. SEE TABLE FOR END CAVITY IDENTIFICATION.
- 2 PULL GROOVES OPTIONAL THESE LOCATIONS REF ONLY.
- 3 HOUSING PART NUMBER, UL & CSA LOGO'S TO BE MOLDED IN THIS AREA. UL LOGO PER 1-18838-3, CSA LOGO PER 1-18839-3.
- 4 CORING AT AMP'S OPTION REF ONLY.
- 5 SPECIAL STAMPING FOR 2-583864-7.
- 6 SPECIAL STAMPING FOR 2-583864-8.
- 7 SPECIAL STAMPING FOR 2-583864-9.
- 8 SPECIAL STAMPING FOR 3-583864-1.
- 9 DATE CODE TO BE MOLDED IN THIS AREA
- 10 OBSOLETE PARTS: OBSOLETE CIS STREAMLINING PER D.RENAUD/D.SINISI

2-583864-9



3-583864-1

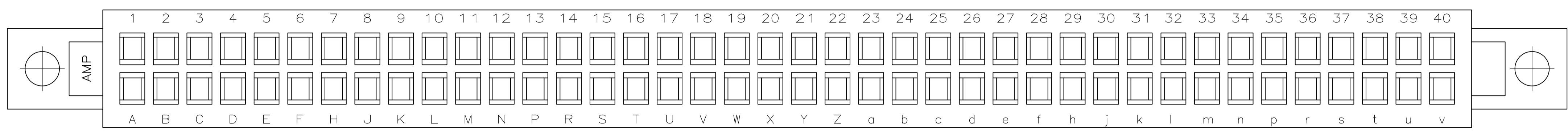
| | | F | E | D | C | B | A | POSN | PART NUMBER |
|----------|----|---------|---------|---------|---------|---------|---------|------|-------------|
| OBSOLETE | 8 | 39.50 | 32.89 | 21.46 | 26.29 | 22.23 | 15.88 | 6 | 3-583864-1 |
| | | [1.555] | [1.295] | [.845] | [1.035] | [.875] | [.625] | | |
| OBSOLETE | 7 | 99.82 | 93.22 | 81.79 | 86.61 | 82.55 | 76.20 | 25 | 2-583864-9 |
| | | [3.930] | [3.670] | [3.220] | [3.410] | [3.250] | [3.000] | | |
| OBSOLETE | 6 | 118.87 | 112.27 | 100.84 | 105.66 | 101.60 | 95.25 | 31 | 2-583864-8 |
| | | [4.680] | [4.420] | [3.970] | [4.160] | [4.000] | [3.750] | | |
| OBSOLETE | 5 | 147.45 | 140.84 | 129.41 | 134.24 | 130.18 | 123.83 | 40 | 2-583864-7 |
| | | [5.805] | [5.545] | [5.095] | [5.285] | [5.125] | [4.875] | | |
| OBSOLETE | | 118.87 | 112.27 | 100.84 | 105.66 | 98.12 | 95.25 | 31 | 2-583864-5 |
| | | [4.680] | [4.420] | [3.970] | [4.160] | [3.863] | [3.750] | | |
| OBSOLETE | | 134.75 | 128.14 | 116.71 | 121.56 | 117.48 | 111.13 | 36 | 2-583864-3 |
| | | [5.305] | [5.045] | [4.595] | [4.785] | [4.625] | [4.375] | | |
| OBSOLETE | | 115.70 | 109.09 | 97.66 | 102.49 | 98.43 | 92.08 | 30 | 2-583864-1 |
| | | [4.555] | [4.295] | [3.845] | [4.035] | [3.875] | [3.625] | | |
| OBSOLETE | | 160.15 | 153.54 | 142.11 | 146.94 | 142.88 | 136.53 | 44 | 1-583864-9 |
| | | [6.305] | [6.045] | [5.595] | [5.785] | [5.625] | [5.375] | | |
| OBSOLETE | | 147.45 | 140.84 | 129.41 | 134.24 | 130.18 | 123.83 | 40 | 1-583864-7 |
| | | [5.805] | [5.545] | [5.095] | [5.285] | [5.125] | [4.875] | | |
| OBSOLETE | | 118.87 | 112.27 | 100.84 | 105.66 | 101.60 | 95.25 | 31 | 1-583864-5 |
| | | [4.680] | [4.420] | [3.970] | [4.160] | [4.000] | [3.750] | | |
| OBSOLETE | | 109.35 | 102.74 | 91.31 | 96.14 | 92.08 | 85.73 | 28 | 1-583864-3 |
| | | [4.305] | [4.045] | [3.595] | [3.785] | [3.625] | [3.375] | | |
| OBSOLETE | | 99.82 | 93.22 | 81.79 | 86.61 | 82.55 | 76.20 | 25 | 1-583864-1 |
| | | [3.930] | [3.670] | [3.220] | [3.410] | [3.250] | [3.000] | | |
| OBSOLETE | 10 | 90.30 | 83.69 | 72.26 | 77.09 | 73.03 | 66.68 | 22 | 583864-9 |
| | | [3.555] | [3.295] | [2.845] | [3.035] | [2.875] | [2.625] | | |
| OBSOLETE | | 77.60 | 70.99 | 59.56 | 64.39 | 60.33 | 53.98 | 18 | 583864-7 |
| | | [3.055] | [2.795] | [2.345] | [2.535] | [2.375] | [2.125] | | |
| OBSOLETE | | 68.07 | 61.47 | 50.04 | 54.86 | 50.80 | 44.45 | 15 | 583864-5 |
| | | [2.680] | [2.420] | [1.970] | [2.160] | [2.000] | [1.750] | | |
| OBSOLETE | 10 | 52.20 | 45.59 | 34.16 | 38.99 | 34.93 | 28.58 | 10 | 583864-3 |
| | | [2.055] | [1.795] | [1.345] | [1.535] | [1.375] | [1.125] | | |
| OBSOLETE | 10 | 39.50 | 32.89 | 21.46 | 26.29 | 22.23 | 15.88 | 6 | 583864-1 |
| | | [1.555] | [1.295] | [.845] | [1.035] | [.875] | [.625] | | |

THIS DRAWING IS A CONTROLLED DOCUMENT. DIMENSIONS: mm [INCHES]. TOLERANCES UNLESS OTHERWISE SPECIFIED: 0 PLC ± .005, 1 PLC ± .005, 2 PLC ± .005, 3 PLC ± .013 [.005], 4 PLC ± .005, ANGLES ± .005.

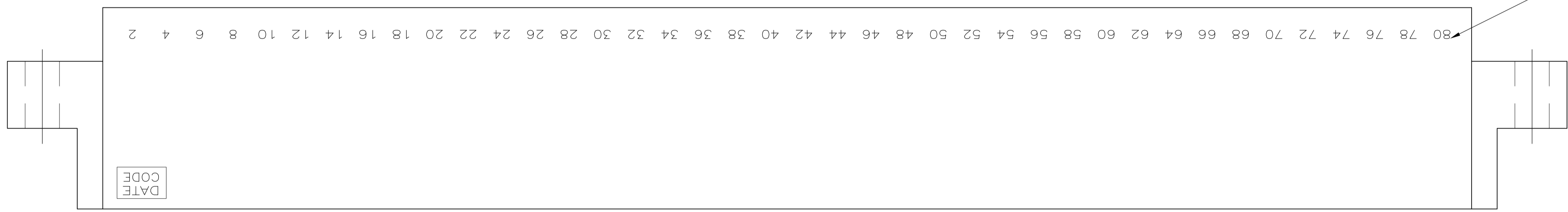
APPROVED: J. ROSE, 3/2/94. NAME: HOUSING, CRIMP SNAP TWIN LEAF, .125 C/L WITH MOUNTING EARS. SIZE: A1. WEIGHT: 00779. SCALE: 4:1. SHEET 2 OF 3. REV 22.

THIS DRAWING IS UNPUBLISHED. RELEASED FOR PUBLICATION. BY TYCO ELECTRONICS CORPORATION. ALL INTERNATIONAL RIGHTS RESERVED.

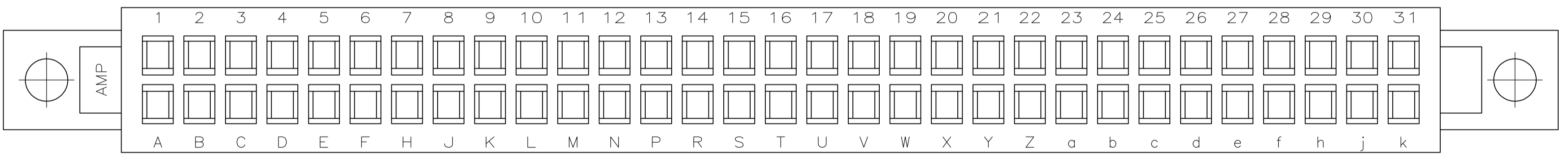
| LOC | | DIST | | REVISIONS | | | |
|-----|-----|-------------|------|-----------|------|---|---|
| P | LTR | DESCRIPTION | DATE | DN | APVD | | |
| - | - | SEE SHEET 1 | - | - | - | - | - |



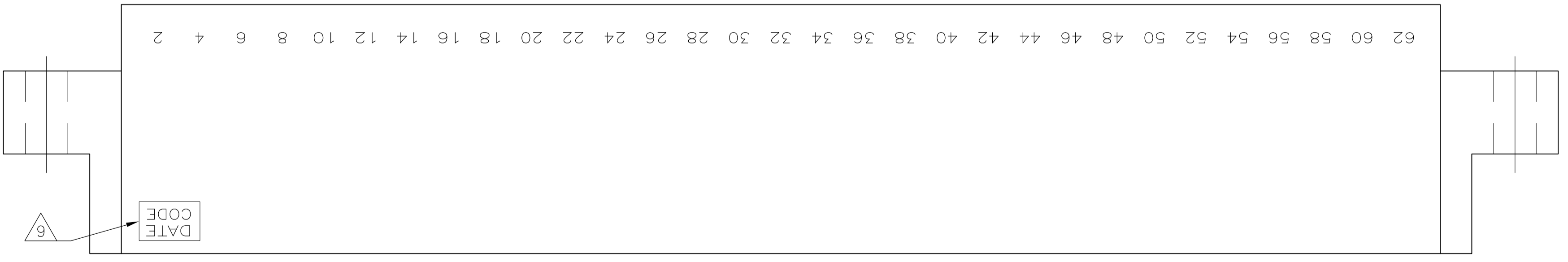
1.17[.046] HIGH CHARS INK, ONE SIDE TO BE ODD NUMBERS 1,3,5... 77,79
 OTHER SIDE TO BE EVEN NUMBERS 2,4,6... 78,80



2-583864-7



1.17[.046] HIGH CHARS INK, ONE SIDE TO BE ODD NUMBERS 1,3,5... 59,61
 OTHER SIDE TO BE EVEN NUMBERS 2,4,6... 60,62



2-583864-8

| | | | | | |
|--|--|--|--|--|--|
| THIS DRAWING IS A CONTROLLED DOCUMENT. | | DIN 12-9-92 | | Tyco Electronics Corporation | |
| DIMENSIONS: mm [INCHES] | | TOLERANCES UNLESS OTHERWISE SPECIFIED: | | Tyco Electronics Corporation Harrisburg, PA 17105-3608 | |
| 0. PLC ± - | | 1. PLC ± - | | NAME: HOUSING, CRIMP SNAP TWIN LEAF, .125 C/L WITH MOUNTING EARS | |
| 1. PLC ± - | | 2. PLC ± - | | SIZE: A1 | |
| 2. PLC ± - | | 3. PLC ± 0.13(.005) | | CAGE CODE: 00779 | |
| 3. PLC ± - | | 4. PLC ± - | | DRAWING NO: 583864 | |
| 4. PLC ± - | | ANGLES ± - | | RESTRICTED TO: - | |
| MATERIAL: - | | FINISH: - | | WEIGHT: - | |
| | | CUSTOMER DRAWING | | SCALE: 1:1 SHEET 3 OF 3 REV 22 | |

单击下面可查看定价，库存，交付和生命周期等信息

[>>TE Connectivity\(泰科\)](#)