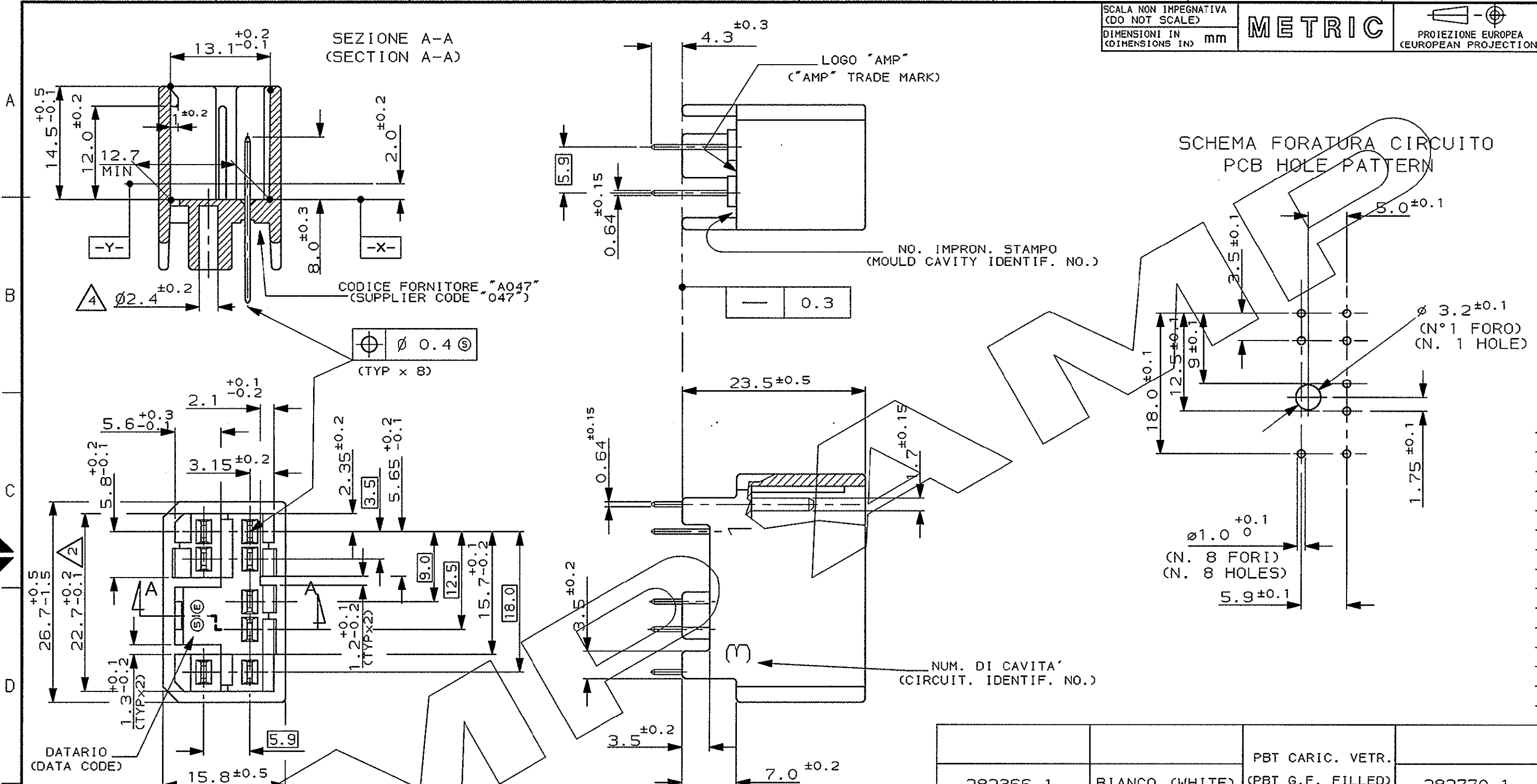


SCALA NON IMPEGNATIVA
(DO NOT SCALE)
DIMENSIONI IN mm
(DIMENSIONS IN mm)

METRIC

PROIEZIONE EUROPEA
(EUROPEAN PROJECTION)



DATARIO (DATA CODE)

- 1) BLOCCHETTO ADATTO PER CONTROPARTI P/N 282366-1 E P/N 173851-1 (8 VIE)
(HOUSING SUITABLE WITH COUNTERPART P/N 282366-1 AND P/N 173851-1 8 POS.)
- 2) QUOTE DA MISURARE TRA I PIANI -X- E -Y-.
(DIMENSIONS MUST BE KEPT BETWEEN -X- AND -Y-).
- 3) TAB IN OTTONE STAGNATO.
(TAB: BRASS TIN PLATED).
- 4) FORO PER VITE AUTOFILETTANTE M3, DA APPLICARE PRIMA DELLA STAGNATURA AD ONDA.
(HOLE FOR TAPPING SCREW M3, BEFORE SOLDER OPERATION)

282366-1	BIANCO (WHITE)	PBT CARIC. VETR. (PBT G.F. FILLED)	282770-1
PORTAFEMMINA VOLANTE (PLUG HOUSING)	FINITURA / COLORE (FINISH / COLOUR)	MATERIALE (MATERIAL)	NUMERO (PART NUMBER)

CUSTOMER DWG. FOR REFERENCE ONLY		DISEGNO PER CLIENTE SOLO PER RIFERIMENTO	
THIS DRAWING IS UNPUBLISHED		RELEASE FOR PUBLICATION 19	
© COPYRIGHT 19 BY AMP INCORPORATED, HARRISBURG, PA. ALL INTERNATIONAL RIGHT RESERVED. AMP PRODUCTS MAY BE COVERED BY U.S. AND FOREIGN PATENT AND/OR PATENT PENDING			
TOLLERANZE: SE NON DIVERSAMENTE SPECIFICATO (TOLERANCES: UNLESS OTHERWISE SPECIFIED)		DIAM. ISOLANTE (INS. DIA. RANGE)	RANGO FILO (WIRE RANGE)
± 0.3		2:1	
ANGOLI (ANGLES)		AMP	
± 2°		AMP ITALIA S.p.A. Corso F.lli Cervi, 15 COLLENO (TORINO)	
DIS. M. PALMA (DR.) 16 NOV '95		DESCRIZIONE (DESCRIPTION) 070 Sr. MULTILOCK* Conn. CAP HOUSING ASS'Y 8 POSITION VERTICAL TYPE	
CONT. C. TARTARI (CHK) 17 NOV '95		LOC. SIZE NUMERO (APP.) (ONS NO)	REV. FOGLIO (SHEET)
APP. (APP.)		I A3 C-282770	D 1 DI 1
REV. (REV.)	REVISIONI (REVISION RECORD)	DIS. DATA (DR) (DATE)	

单击下面可查看定价，库存，交付和生命周期等信息

[>>TE Connectivity\(泰科\)](#)