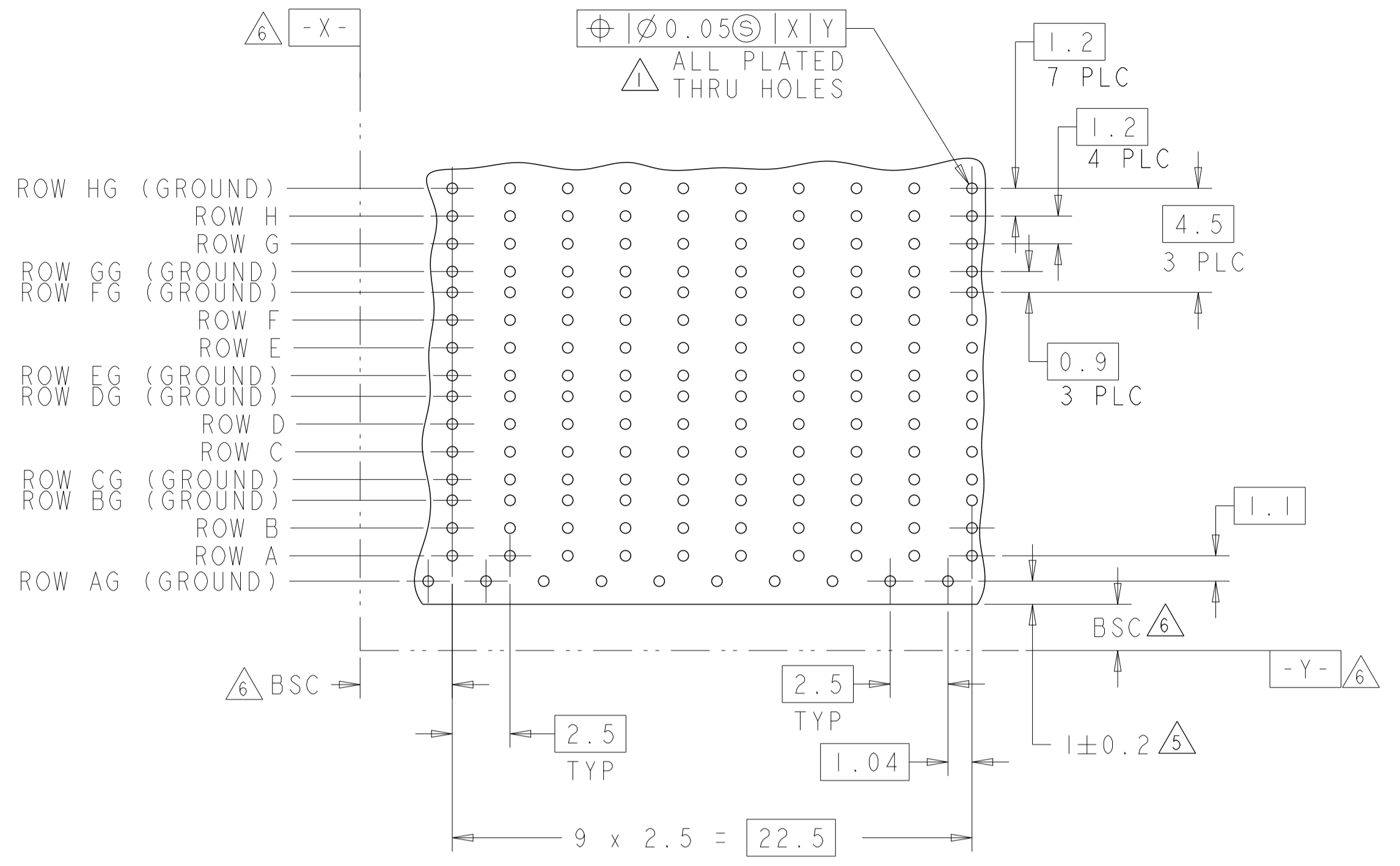
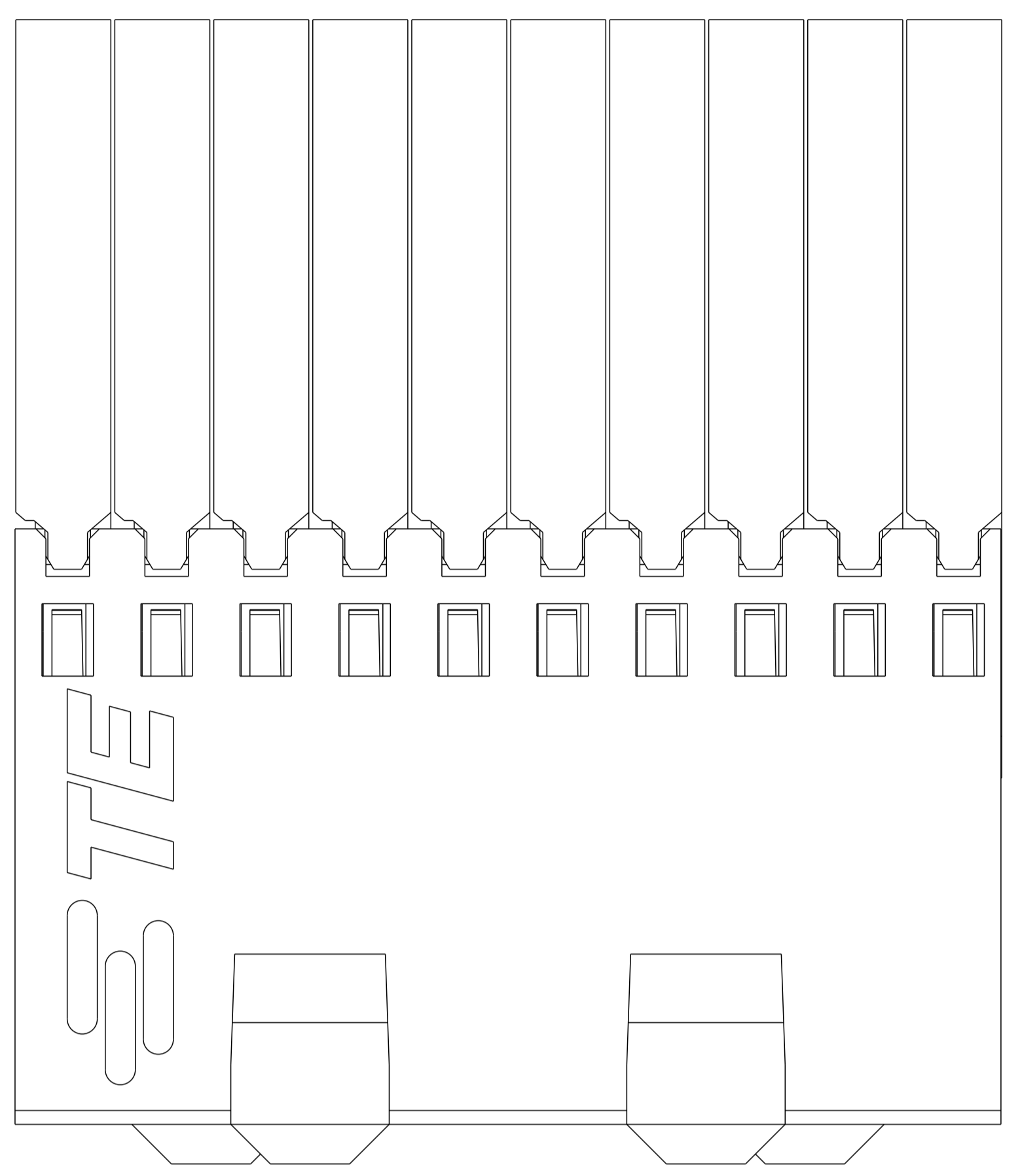
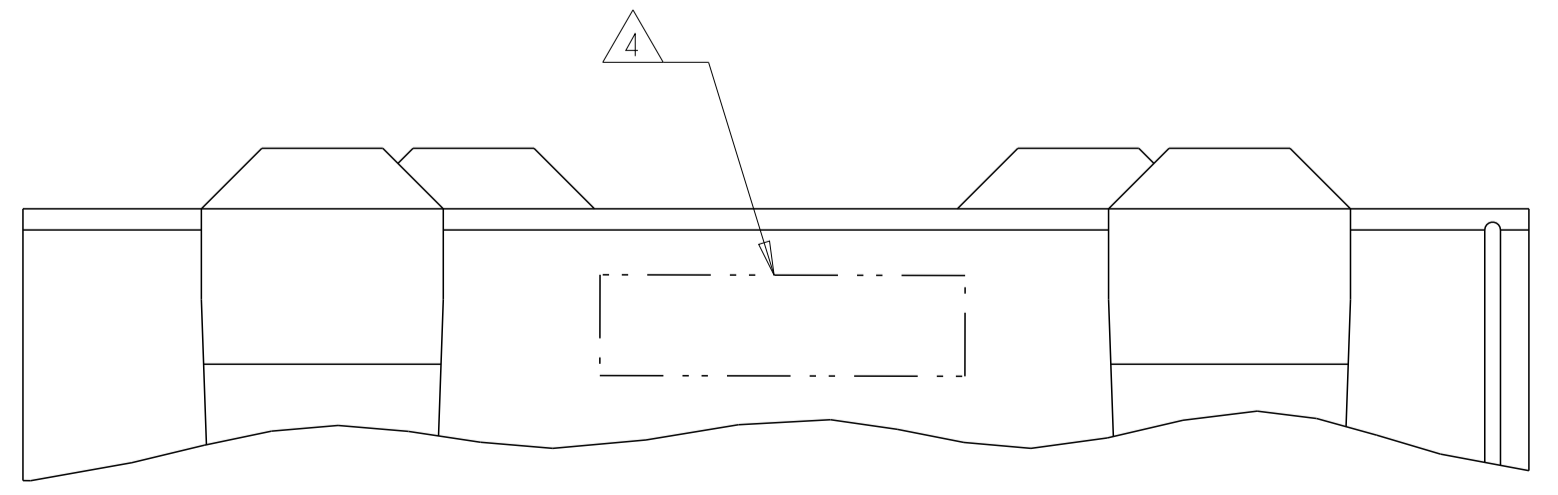
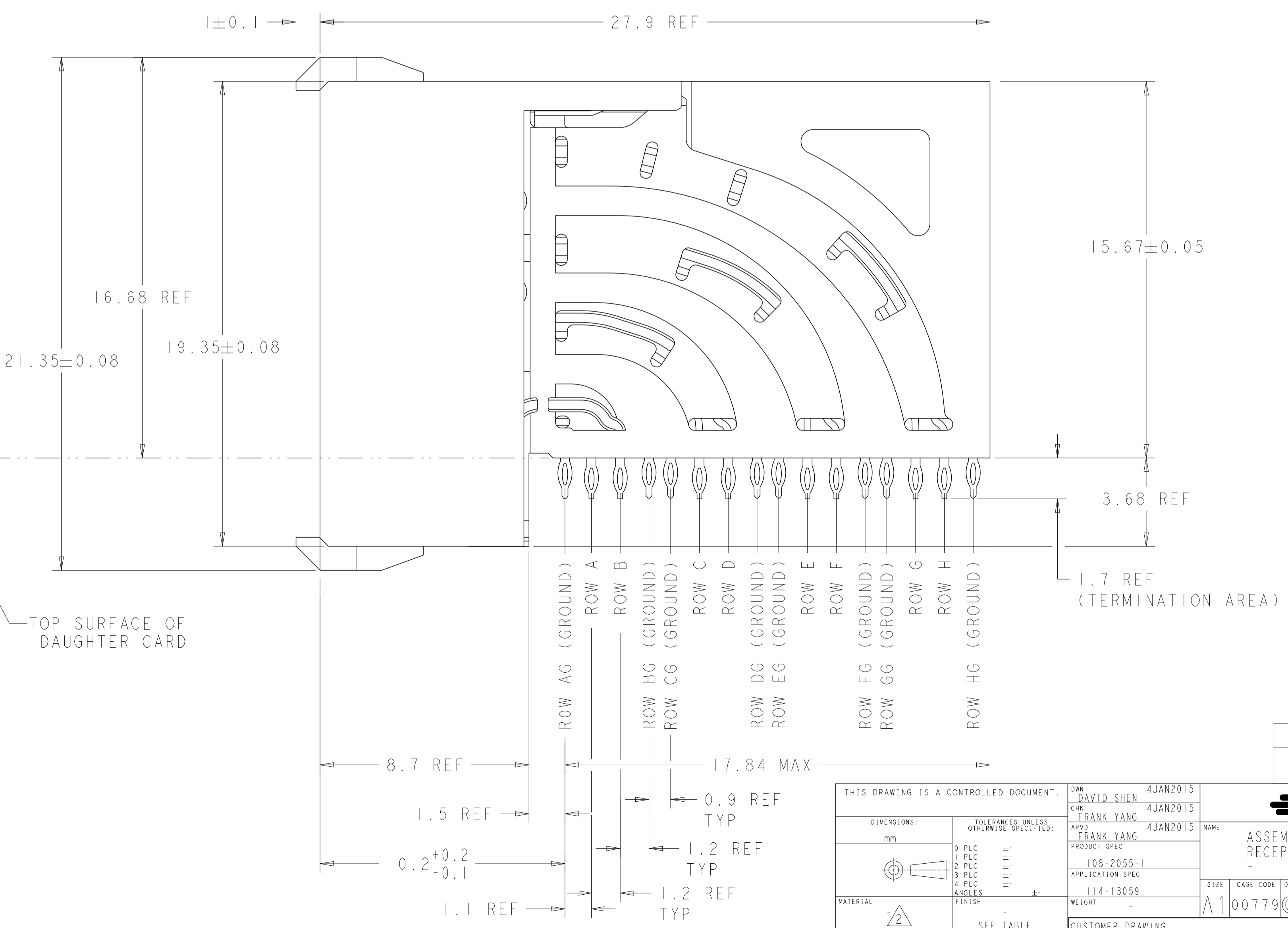
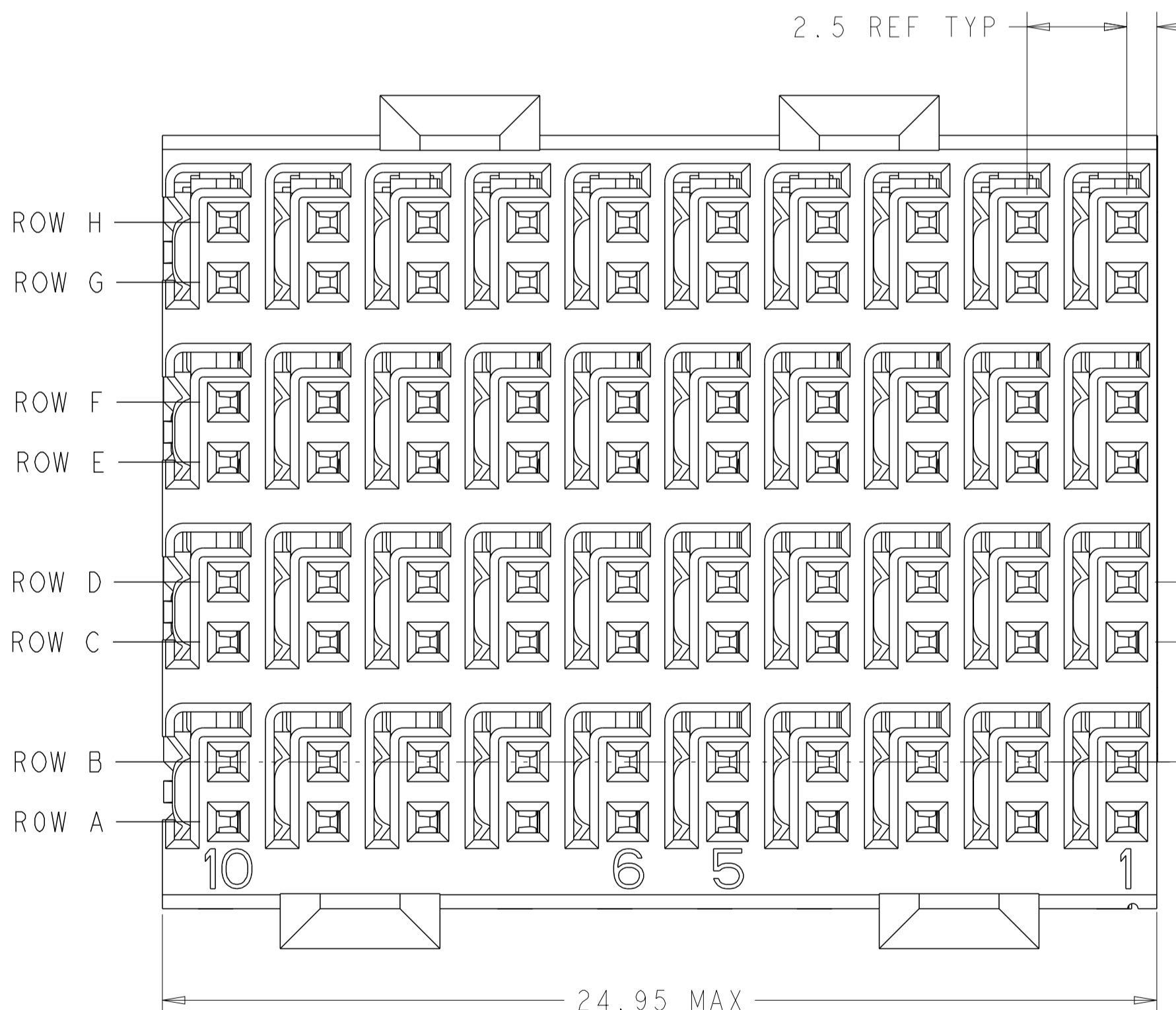


| REVISIONS | | | | |
|-----------|------|---------------------------|-----------|-------|
| P. | LTN. | DESCRIPTION | DATE | APPD. |
| A | | INITIAL RELEASE | 19MAR2015 | DS FY |
| B | | REVISED PER ECO-16-017623 | 28MAY2016 | DS HL |



- 1. REFERENCE APPLICATION SPEC 114-13059 FOR RECOMMENDED PLATED THRU HOLE DIAMETER AND PLATING THICKNESSES.
- 2. MATERIAL:
 SHIELD - PHOSPHOR BRONZE
 CONTACT - COPPER-NICKEL-SILICON
 HOUSING, CHICKLET AND CHICKLET COVER - GLASS FILLED POLYESTER, UL 94V-0 RATED.
- 3. FINISH: CONTACT AND SHIELD
 MATING AREA:
 MEETS THE PERFORMANCE REQUIREMENTS OF TYCO ELECTRONICS PRODUCT SPECIFICATION, 108-2055-1; BASED ON TELCORDIA GR-1217-CORE, APPLICATIONS IN UNCONTROLLED ENVIRONMENTS.
 COMPLIANT PIN AREA:
 0.5µm MIN MATTE TIN OVER BASE PLATING.
- 4. CONNECTOR MARKED WITH PART NUMBER AND DATE CODE IN APPROXIMATE AREA SHOWN.
- 5. DIMENSION APPLIES TO CENTERLINE OF THRU HOLE.
- 6. DATUMS AND BASIC DIMENSIONS ESTABLISHED BY CUSTOMER.
- 7. CONTACT AREA LUBRICATED WITH BELLCORE APPROVED LUBRICANT. TECHNICAL REFERENCE: GR-1217-CORE, ISSUE 1, NOVEMBER 1995.

RECOMMENDED PC BOARD LAYOUT,
 DAUGHTER BOARD,
 COMPONENT SIDE SHOWN
 SCALE 5:1



| | |
|--------|-------------|
| 3 | 2170903-1 |
| FINISH | PART NUMBER |

| | | | |
|--|-----------|---------------------------|--|
| THIS DRAWING IS A CONTROLLED DOCUMENT. | | OWN: DAVID SHEN 4JAN2015 | NAME: ASSEMBLY, Z-Pack HM-eZd + RECEPTACLE, 4 PAIR, 10COLUMN |
| DIMENSIONS: | | CHK: FRANK YANG 4JAN2015 | PRODUCT SPEC: 108-2055-1 |
| TOLERANCES UNLESS OTHERWISE SPECIFIED: | | APPD: FRANK YANG 4JAN2015 | APPLICATION SPEC: 114-13059 |
| mm | 0 PLC ± | SIZE: A1 | RESTRICTED TO: B |
| | 1 PLC ± | CAGE CODE: 00779 | WEIGHT: - |
| | 2 PLC ± | DRAWING NO: 2170903 | CUSTOMER DRAWING |
| | 3 PLC ± | SCALE: 8:1 | SHEET 1 OF 1 |
| | 4 PLC ± | | REV B |
| | ANGLES ± | | |
| MATERIAL: 2 | FINISH: - | | |

单击下面可查看定价，库存，交付和生命周期等信息

[>>TE Connectivity\(泰科\)](#)