

THIS DRAWING IS UNPUBLISHED.

RELEASED FOR PUBLICATION

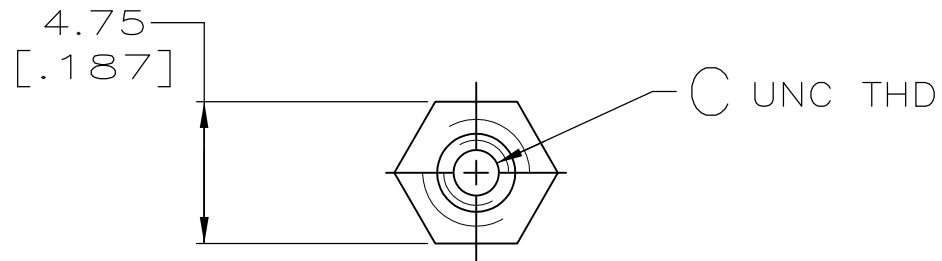
© COPYRIGHT - By -

ALL RIGHTS RESERVED.

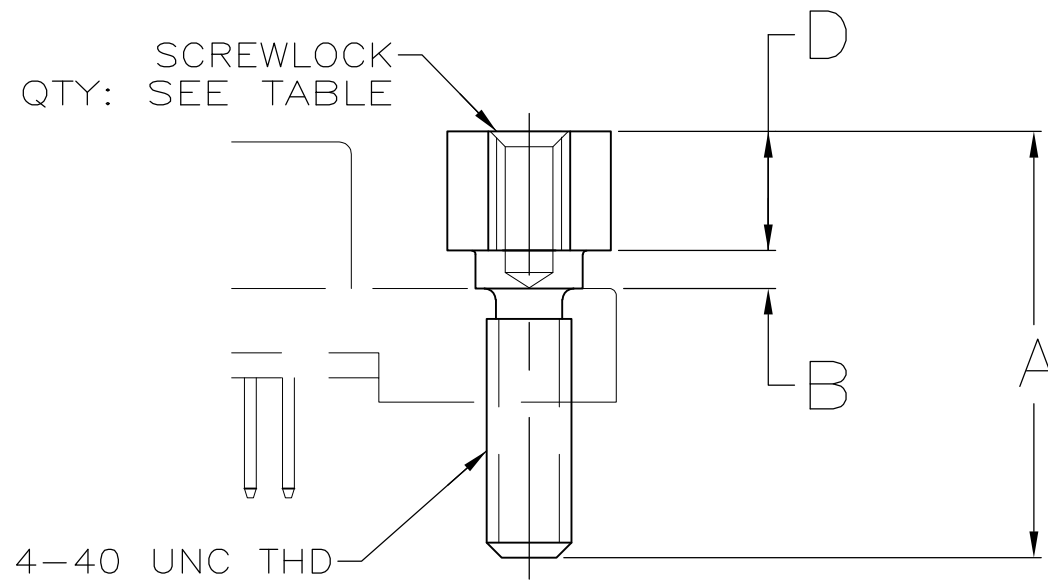
LOC GP DIST 00

REVISIONS

P	LTR	DESCRIPTION	DATE	DWN	APVD
	M3	REVISED PER ECO-11-004835	11MAR11	RK	HMR



1 OBSOLETE PARTS: OBSOLETE CIS STREAMLINING PER D.RENAUD/D.SINISI



1	OBSOLETE	1000	4.19 [.165]	2-56	1.07 [.042]	14.27 [.562]	749087-8
	OBSOLETE	1000	3.99 [.157]	2-56	1.27 [.050]	14.27 [.562]	749087-7
	OBSOLETE	2	3.71±0.05 [.146±.002]	2-56	1.27 [.050]	13.92 [.548]	749087-6
	OBSOLETE	1000	3.99 [.157]	4-40	1.27 [.050]	18.29 [.720]	749087-5
		2	4.19 [.165]	2-56	1.07 [.042]	14.27 [.562]	749087-4
		1000	3.99 [.157]	2-56	1.27 [.050]	9.65 [.380]	749087-3
		2	3.99 [.157]	2-56	1.27 [.050]	9.65 [.380]	749087-2
		2	3.99 [.157]	2-56	1.27 [.050]	14.27 [.562]	749087-1
	SCREWLOCKS PER BAG		D	C	B	A	PART NUMBER

THIS DRAWING IS A CONTROLLED DOCUMENT.

DWN D.GELTZ 11/24/93

CHK R.STONE 02/25/94

APVD -

PRODUCT SPEC -

APPLICATION SPEC -

WEIGHT -

CUSTOMER DRAWING

STE TE Connectivity

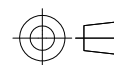
SCREWLOCK KIT, FEMALE, AMPLIMITE, .050 SERIES

SIZE	CAGE CODE	DRAWING NO	RESTRICTED TO
A3	00779	C-749087	-

SCALE 4:1 SHEET 1 OF 1 REV M3

DIMENSIONS: INCHES

TOLERANCES UNLESS OTHERWISE SPECIFIED:



0 PLC	± -
1 PLC	± -
2 PLC	± 0.13 [.005]
3 PLC	± -
4 PLC	± -
ANGLES	± -

MATERIAL STAINLESS STEEL FINISH -

单击下面可查看定价，库存，交付和生命周期等信息

[>>TE Connectivity\(泰科\)](#)