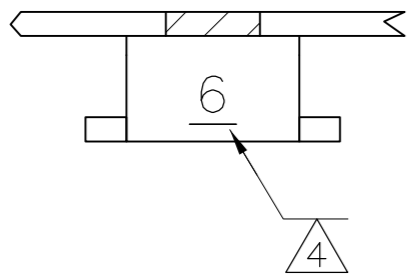
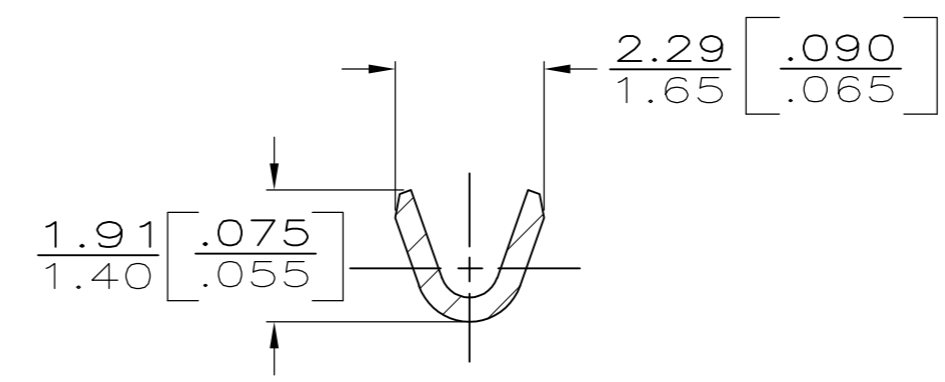
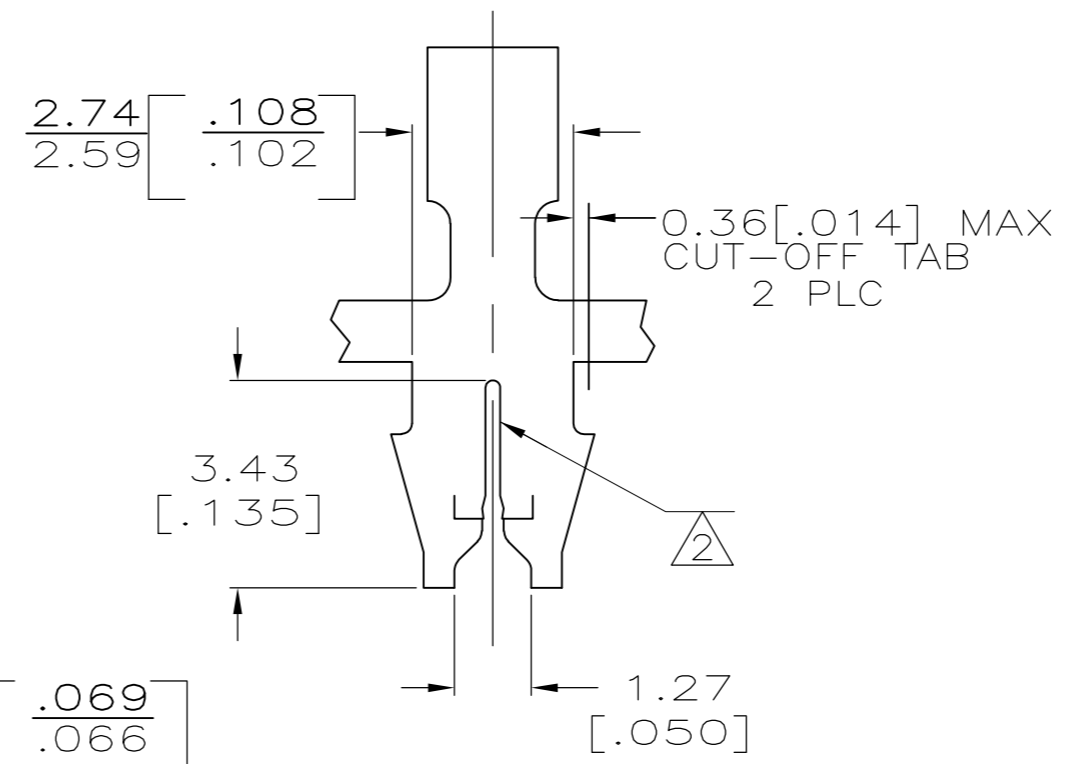
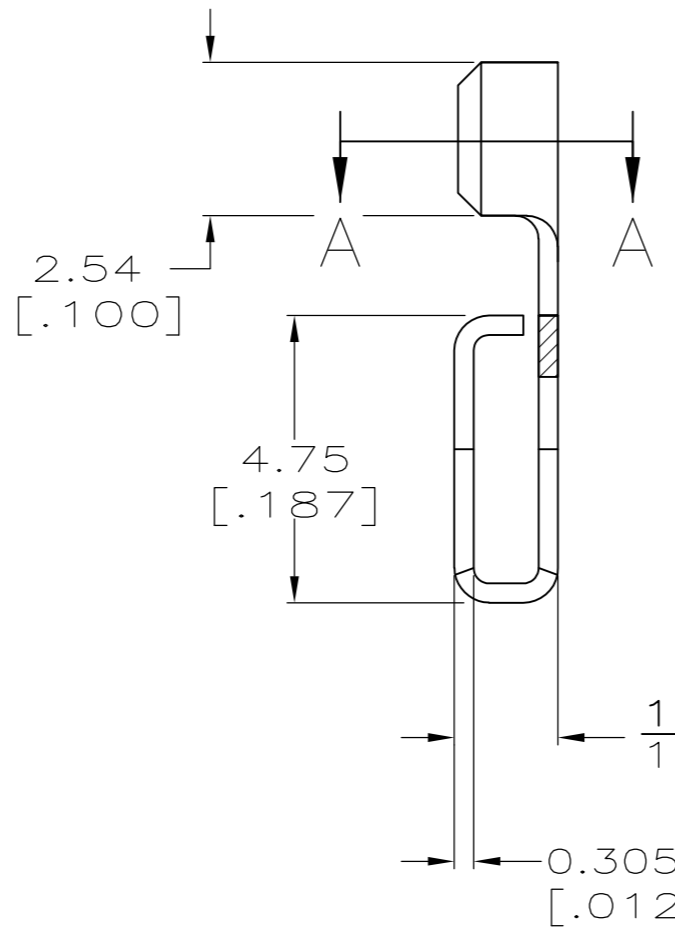
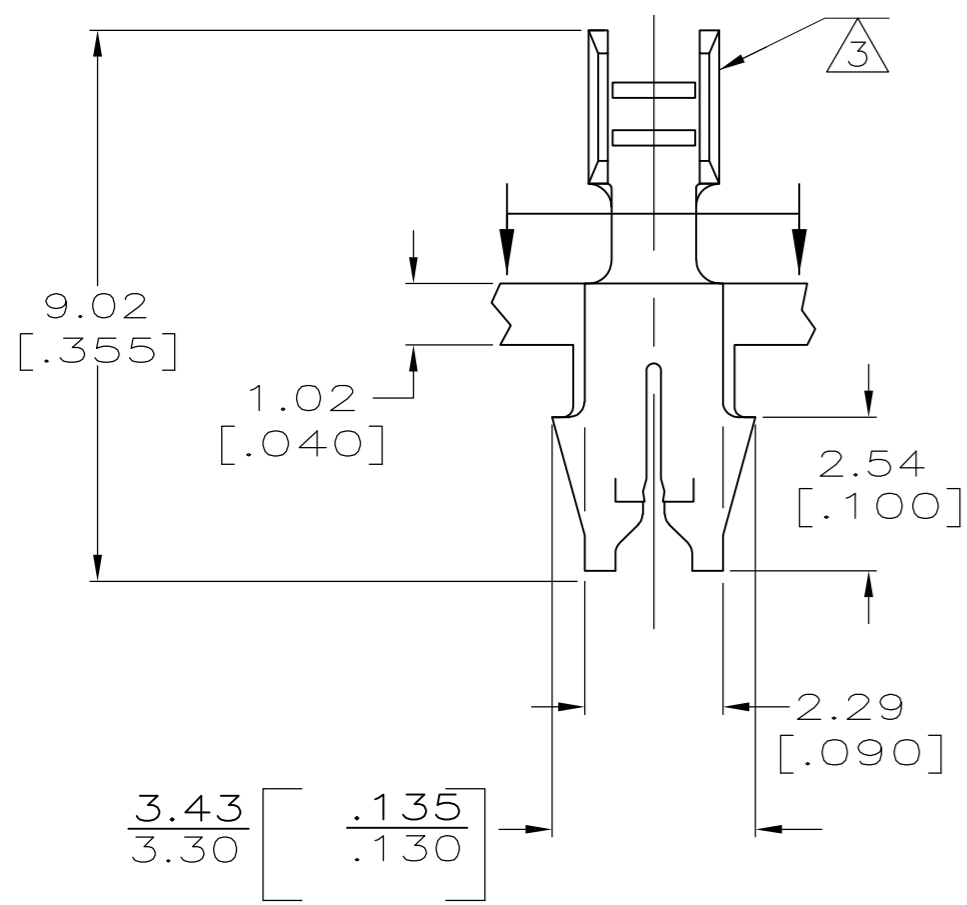


THIS DRAWING IS UNPUBLISHED. RELEASED FOR PUBLICATION
 © COPYRIGHT - By - ALL RIGHTS RESERVED.

LOC	DIST	REVISIONS			
P	LTR	DESCRIPTION	DATE	DWN	APVD
AF	50	K1	ECR-13-017177	05NOV13	PKS RRP

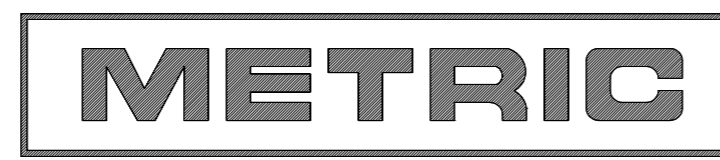


- 1 CONTINUOUS STRIP ON REELS WITH TERMINALS LOCATED ON 5.08[.200] CENTERS.
- 2 SLOT ACCEPTS A 0.25-0.32 mm DIA [#30-#28] AWG COPPER MAGNET WIRE ONLY (2 WIRES MAX).
- 3 WIRE BARREL ACCEPTS 0.12-0.40 mm² [#26-#22] AWG LEAD WIRE.
- 4 IDENTIFICATION NUMBER FOR MAGNET WIRE RANGE.



SECTION A-A
 ROTATED 90° CW

3.56 [.140]	F	1.40 [.055]	0.97 [.038] 0.89 [.035] 0.86 [.034]	0.35 [.22] 0.20 [.24] 0.14 [.26]
STRIP LENGTH ±.015	TYPE	WIDTH	±0.051[±002] HEIGHT	WIRE
WIRE BARREL CRIMP				



REVERSE REEL OF 62608-1	TIN PLATE PER MIL-T-10727	62608-3
-	TIN PLATE PER MIL-T-10727	62608-1
REELING	FINISH	PART NO.
THIS DRAWING IS A CONTROLLED DOCUMENT.		DWN DK SCHRUM 8/3/89
DIMENSIONS: INCHES		CHK MS FEHER 8/16/89
TOLERANCES UNLESS OTHERWISE SPECIFIED:		APVD N.E. NEFF 8/16/89
0 PLC ± -		NAME
1 PLC ± -		TE Connectivity
2 PLC ± -		PRODUCT SPEC
3 PLC ± 0.38[.015]		APPLICATION SPEC
4 PLC ± -		114-2069
ANGLES ± -		WEIGHT -
FINISH		SIZE A2
SEE TABLE		CAGE CODE 00779
MATERIAL BRASS		DRAWING NO C=62608
CUSTOMER DRAWING		RESTRICTED TO -
SCALE 8:1		SHEET 1 of 1
REV K1		

单击下面可查看定价，库存，交付和生命周期等信息

[>>TE Connectivity\(泰科\)](#)