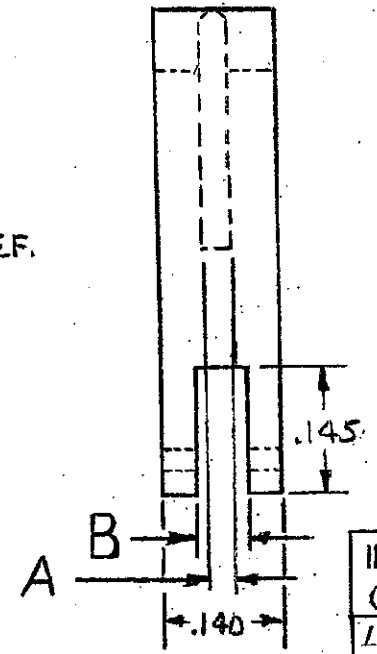
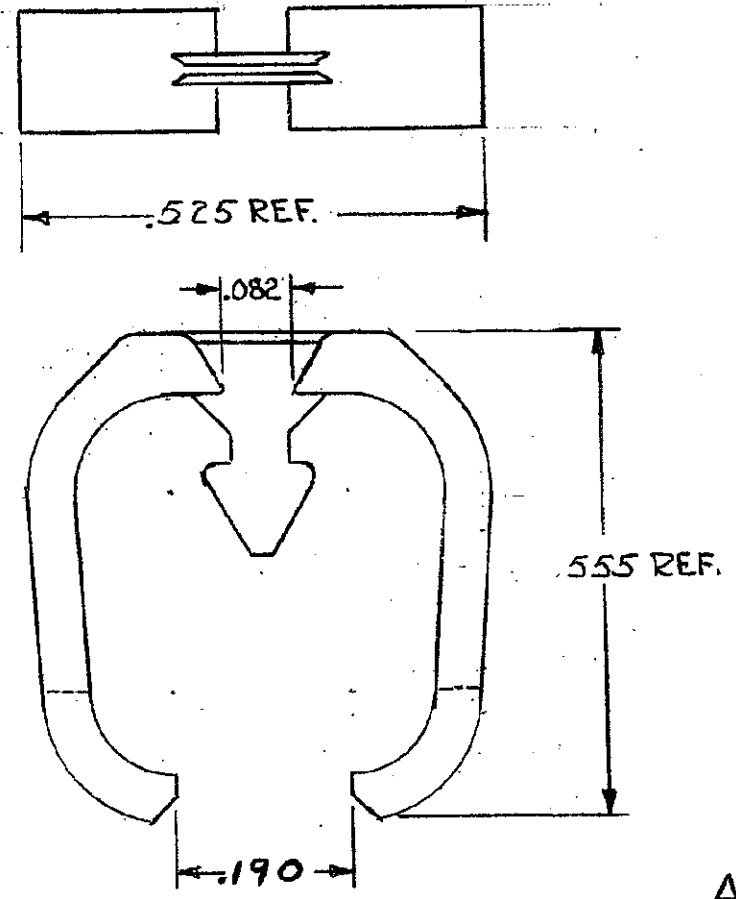


DRAWING MADE IN THIRD ANGLE PROJECTION

© COPYRIGHT 1974 BY AMP INCORPORATED, HARRISBURG, PA.
 ALL INTERNATIONAL RIGHTS RESERVED. AMP INCORPORATED PRODUCTS
 COVERED BY U. S. AND FOREIGN PATENTS AND/OR PATENTS PENDING.

Unpublished copy not to be reproduced
 without written permission of AMP Incorporated


		REVISIONS			LOC	DIST
F	ZONE	LTR	DESCRIPTION	DATE	APPROVED	
✓		0	RELEASED 5193-324-1 m.s.	4-28-75		22
✓		01	ADDED - 2 WAS 5193-324-2 4517	7-2-75	m.s. DR.	
✓		A	REVISED 5843 m.s.	1-17-77		
✓		B	REV PER AD4842	8/90	CP/HWR	
✓		C	REV PER EC 0320-209-97	7-1-97	NS	



OBSOLETE

INTERCONTACT KEY FOR .100 & CONN.; USE INSERTION TOOL 91081-2	.040	.033 .028	530286-3
INTER CONTACT KEY FOR .125, .150 & .156 & CONN.; USE INSERTION TOOL 91081-1	.050	.048 .043	530286-2
INTER CONTACT KEY FOR .100 & CONN.; USE INSERTION TOOL 91081-2	.040	.033 .028	530286-1

REMARKS "B" "A" PART NO

UNLESS OTHERWISE SPECIFIED DIMENSIONS ARE IN INCHES. TOLERANCES ON: DECIMALS ± ANGLES ±	CONTRACT NO	 AMP INCORPORATED Harrisburg, Pa.
	DR <i>Amabile</i> 12-12-74	
MATERIAL NYLON.	CHK <i>Amabile</i> 4-28-75	NAME KEYING PLUG, TWIN LEAF CONNECTOR.
	APPD <i>Kaufman</i> 4-28-75	
FINISH	APPD <i>Sholima</i> 4/29/75	SIZE B
	DSGN APPD	CODE IDENT-NO 00779
OTHER APPD	DRAWING NO 530286	SCALE →
	SHEET 1 OF 1	

单击下面可查看定价，库存，交付和生命周期等信息

[>>TE Connectivity\(泰科\)](#)