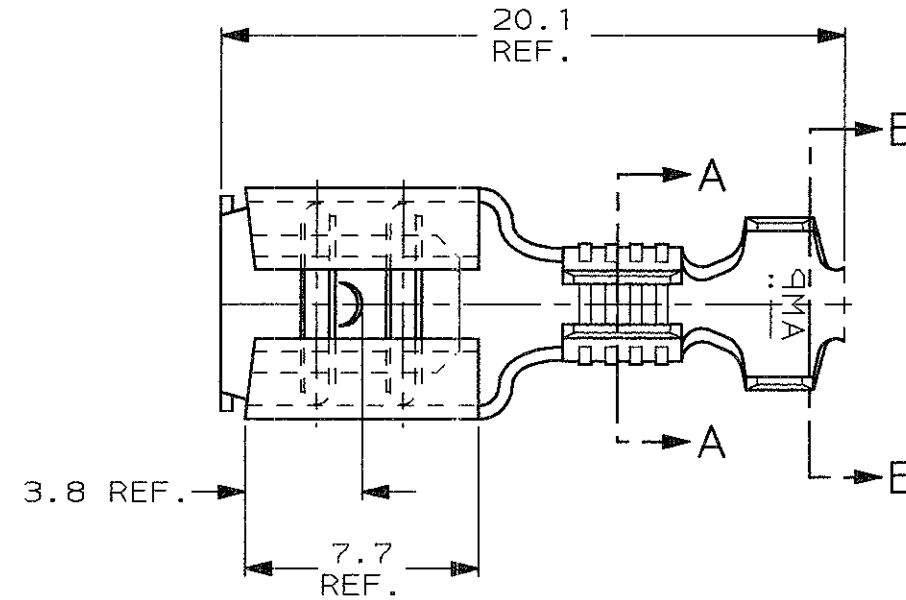


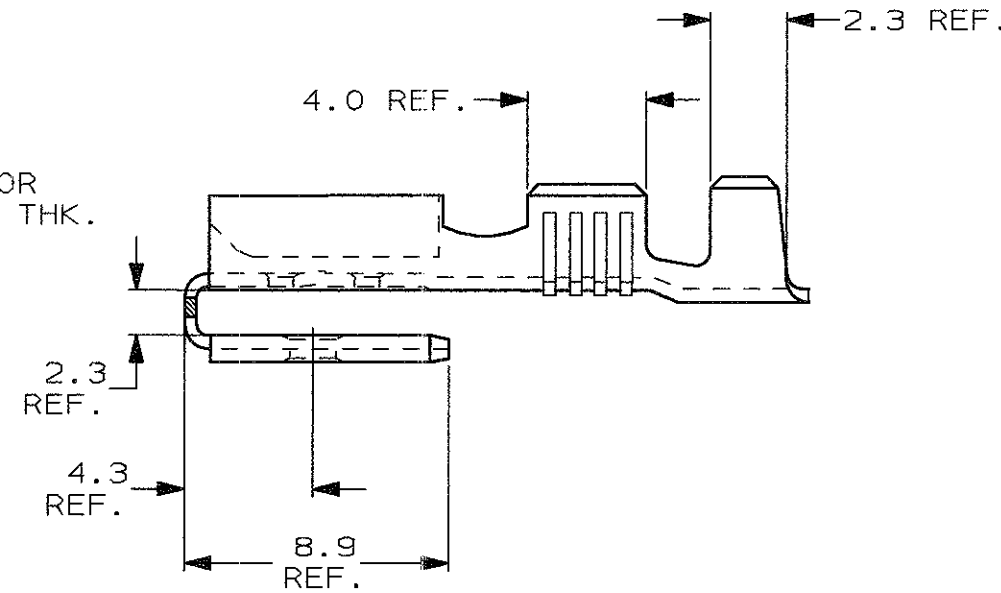
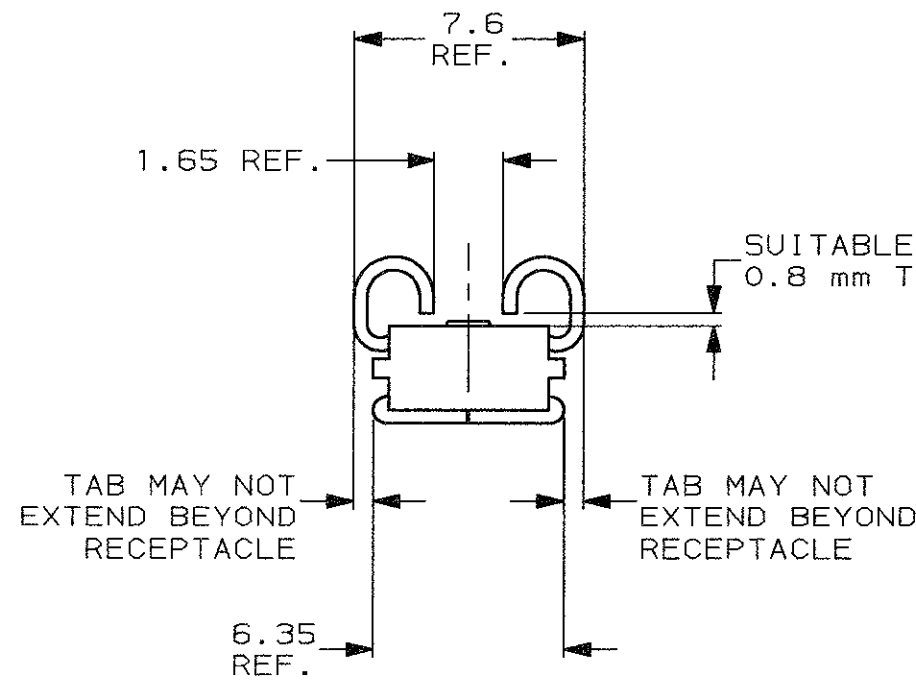
SCALA NON IMPEGNATIVA
(DO NOT SCALE)
DIMENSIONI IN mm
(DIMENSIONS IN mm)

METRIC

THIRD ANGLE
PROJECTION

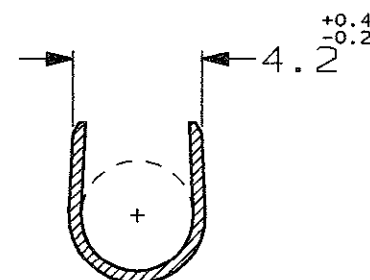
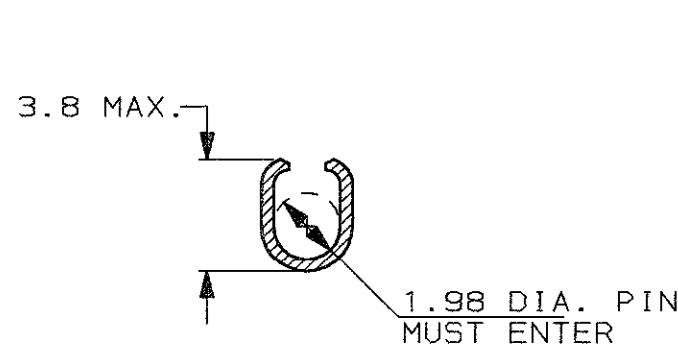


- 1) PER PEZZI IN NASTRO
VEDERE DISEGNO 280079.
(FOR STRIP VERSION SEE DWG. 280079).
- 2) CONFEZIONAMENTO IN ACCORDO ALLA
SPECIFICA AMP 107-20201.
(PACKAGE ACCORDING TO AMP SPEC. 107-20201).



SEZIONE A-A
(SECTION A-A)

SEZIONE B-B
(SECTION B-B)



PRE NICHELATO (PRE-NICKEL PL.)	ACCIAIO (STEEL)	0-181637-3	C
STAGNATO (TIN PLATED)	OTTONE (BRASS)	0-181637-2	C
FINITURA / COLORE (FINISH / COLOUR)	MATERIALE (MATERIAL)	NUMERO (AMP P/N)	REV

CUSTOMER DWG.
FOR REFERENCE ONLY

DISEGNO PER CLIENTE
SOLO PER RIFERIMENTO

THIS DRAWING IS UNPUBLISHED - RELEASE FOR PUBLICATION 19

© COPYRIGHT 19 BY AMP INCORPORATED, HARRISBURG, PA. ALL INTERNATIONAL RIGHT RESERVED. AMP PRODUCTS MAY BE COVERED BY U.S. AND FOREIGN PATENT AND/OR PATENT PENDING

TOLLERANZE: SE NON DIVERSAMENTE SPECIFICATO (TOLERANCES: UNLESS OTHERWISE SPECIFIED)	DIAM. ISOLANTE (INS. DIA. RANGE)	RANGO FILO (WIRE RANGE) mm ²	SCALA (SCALE)
± 0.3	3.0-4.3	0.8-2.5	4:1

ANGOLI
(ANGLES) ± 2°

AMP AMP ITALIA S.p.A.
Corso F.lli Cervi, 15
COLLEGNO (TORINO)

DIS. 28 JUN 2001
(DR.) H. YAALI

DESCRIZIONE
(DESCRIPTION) FASTON® Connector,
.250" sr. PIGGY-BACK REC. CONTACT
(CLOSE PIECE VERSION)

CONT. 28 JUN 2001 (CHK) C. TARTARI	LOC. SIZE NUMERO (DWG NO)	REV.	FOGLIO (SHEET)
	IA3 C-181637	C	1 DI 1 (OF 1)

REV.	REVISIONI (REVISION RECORD)	DIS. DATA (DR) (DATE)	H. Y. 2001	APP. DATA (APP.) (DATE)
C	REDRAWN ET00-0174-01			

DISTRIBUZIONE
(PRINT DIST.)

单击下面可查看定价，库存，交付和生命周期等信息

[>>TE Connectivity\(泰科\)](#)