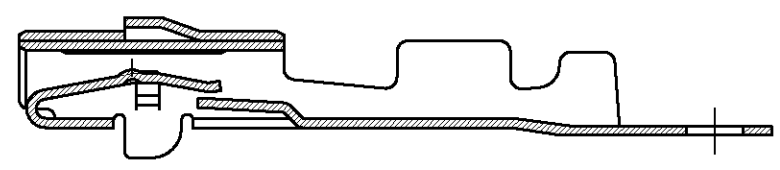
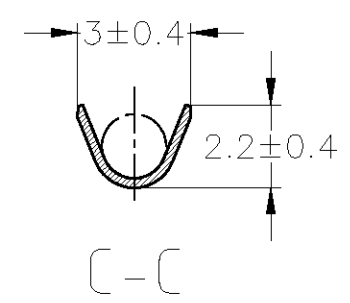
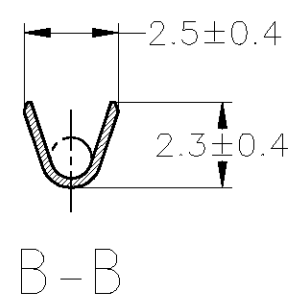
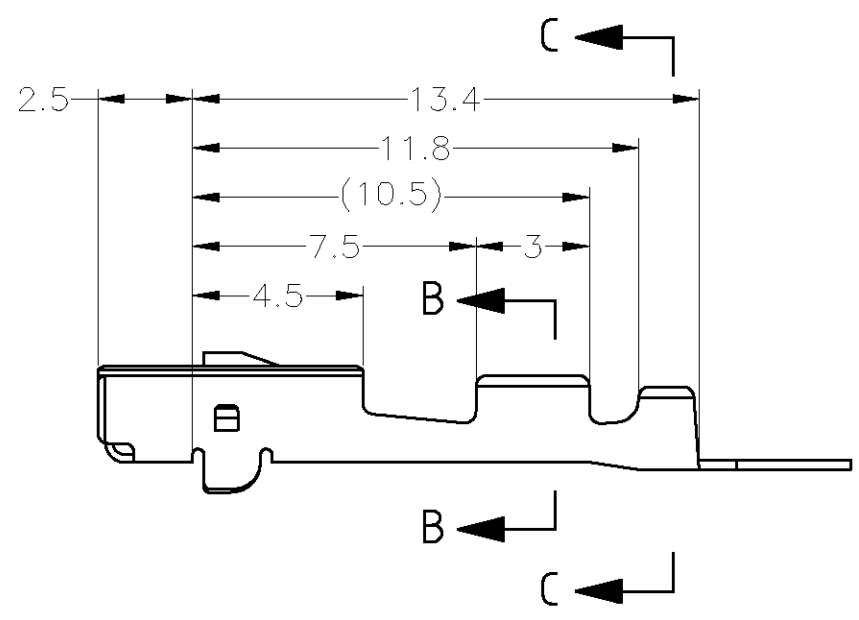
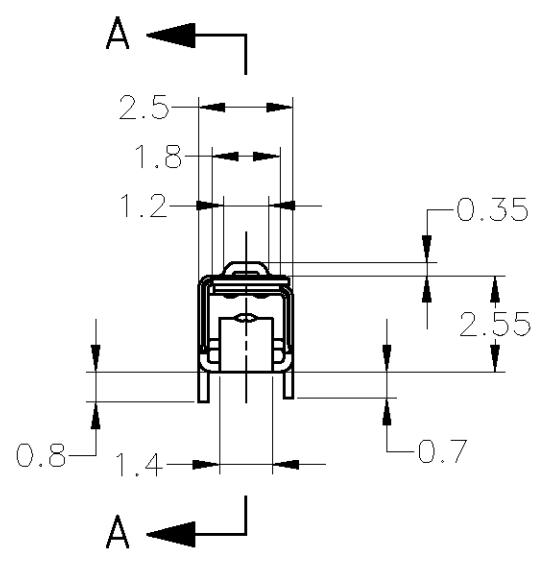
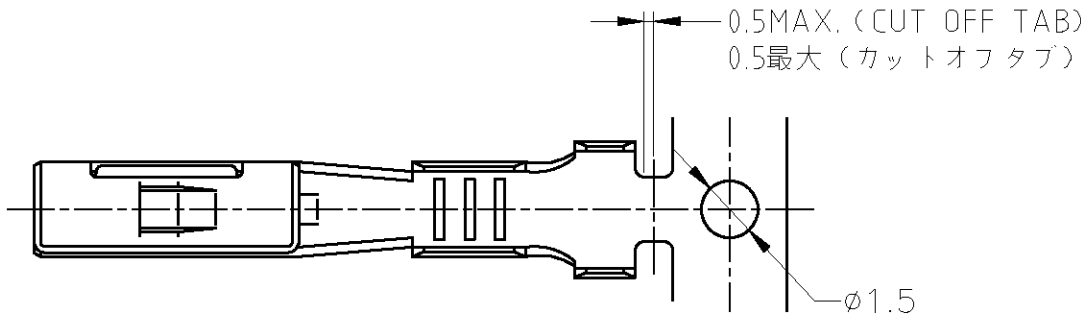


THIS DRAWING IS UNPUBLISHED. RELEASED FOR PUBLICATION
 © COPYRIGHT - By Tyco Electronics JAPAN G.K. ALL RIGHTS RESERVED.

LOC	DIST	REVISIONS			
P	LTR	DESCRIPTION	DATE	DWN	APVD
J	-	G	REVISED	ECR-13-011414	05JUL2012 TS KB



A-A

OBSOLETE	ZKLF-5	-	PRE-TIN	175268-5
	BRASS	179423-1	PRE-TIN	175268-1
	MATERIAL	LOOSE PIECE CONTACT PN	FINISH	PART NUMBER

1. APPLICATION SPEC NO. 114-5160

1. 取付適用規格番号 114-5160

THIS DRAWING IS A CONTROLLED DOCUMENT.

DIMENSIONS:	TOLERANCES UNLESS OTHERWISE SPECIFIED:
mm	0 PLC ± -
	1 PLC ± -
	2 PLC ± -
	3 PLC ± -
	4 PLC ± -
	ANGLES ± -

TOLERANCES UNLESS OTHERWISE SPECIFIED:	
一般公差	
10 ≥	: ±0.2
30 ≥ > 10	: ±0.25
100 ≥ > 30	: ±0.3
ANGLE	: ±3°

MATERIAL	FINISH
SEE TABLE	SEE TABLE

DWN	T.SHINOHARA	05JUL2012	STE TE Connectivity
CHK	K.BETSUI	05JUL2012	
APVD	K.BETSUI	05JUL2012	
PRODUCT SPEC	-		
APPLICATION SPEC	SEE NOTE		NAME
WEIGHT	0.32 g	SIZE	070II SERIES S RECEPTACLE CONTACT
CUSTOMER DRAWING	A300779	CAGE CODE	C-175268
	SCALE	5:1	RESTRICTED TO
	SHEET	1 OF 1	REV
			G

包含電線断面積 (WIRE RANGE)	被覆外径 (INSULATION DIA.)
0.37~0.88 mm ² (AWG#22-#18)	1.1~2.1 mmφ

单击下面可查看定价，库存，交付和生命周期等信息

[>>TE Connectivity\(泰科\)](#)