

THIS DRAWING IS UNPUBLISHED.

RELEASED FOR PUBLICATION

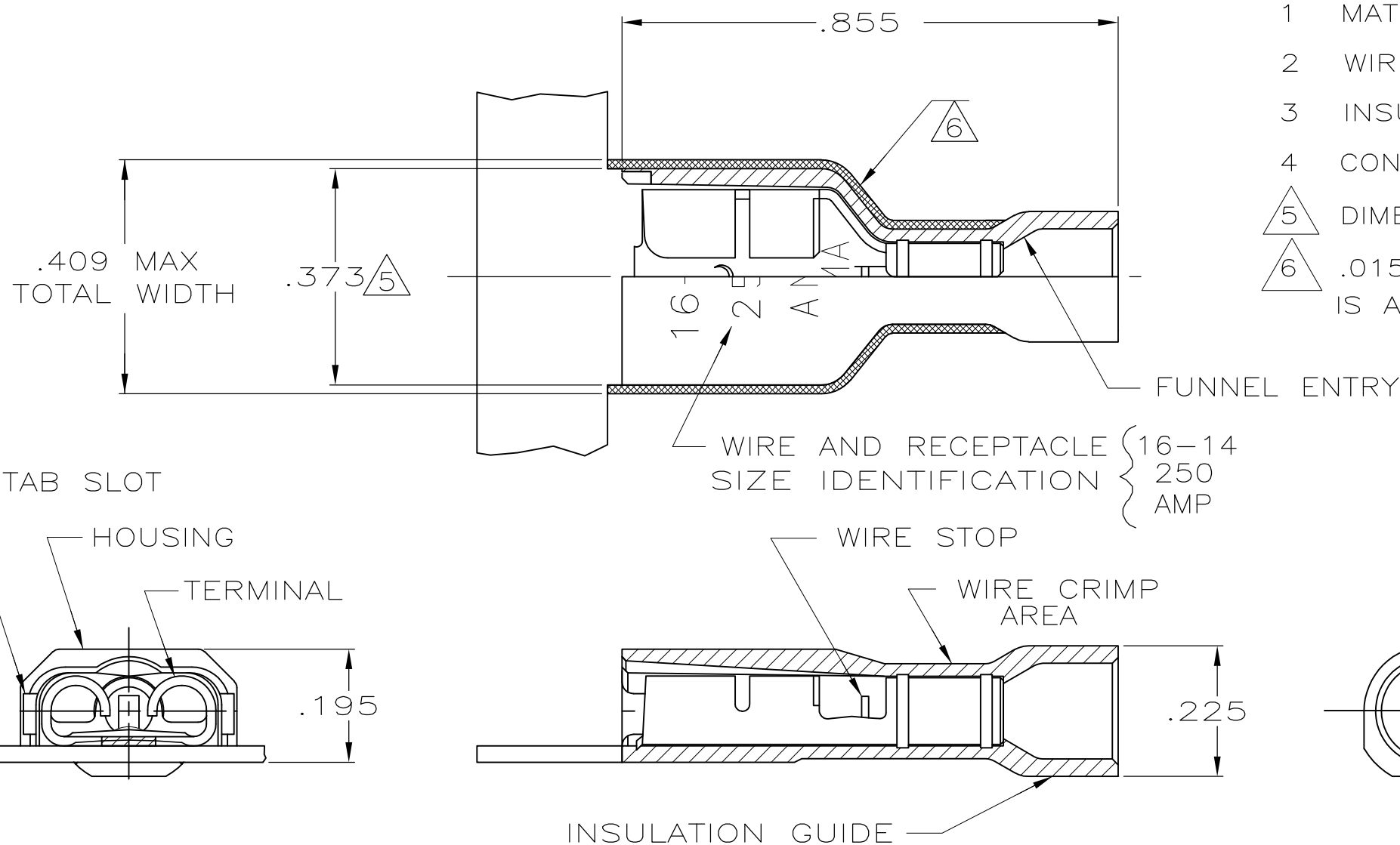
ALL RIGHTS RESERVED.

© COPYRIGHT - By -

LOC AF DIST 50

REVISIONS

P	LTR	DESCRIPTION	DATE	DWN	APVD
	C	REV PER ECO-13-012021	7/29/13	MD	KR



- 1 MATES WITH .032±.001x.250 TAB, PER NEMA DC-2
- 2 WIRE STRIP LENGTH .281
- 3 INSULATION SIZE .160 MAX DIA
- 4 CONTINUOUS STRIP ON REELS
- 5 DIMENSION DOES NOT INCLUDE TRIM BURR
- 6 .015 MAX CARRIER TRIM BURR PER SIDE IS ALLOWABLE IN THE SHADED AREA

HOUSING: NYLON, COLOR-BLUE TRANSLUCENT
 RECEPTACLE: BRASS, TIN

3-521072-2

MATERIAL & FINISH

PART NO

THIS DRAWING IS A CONTROLLED DOCUMENT.

DWN JR RUTH 9/1/94

CHK MS FEHER 9/1/94

APVD - 9/1/94 D BRATINA

PRODUCT SPEC 8/15/94 108-2043

APPLICATION SPEC 114-2123

WEIGHT -

CUSTOMER DRAWING

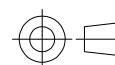


RECEPTACLE ASSY, ULTRA-FAST, .250 SERIES, 16-14 AWG, HIGH RETENTION

SIZE	CAGE CODE	DRAWING NO	RESTRICTED TO
A3	00779	C-521072	-

DIMENSIONS: INCHES

TOLERANCES UNLESS OTHERWISE SPECIFIED:



0 PLC	± -
1 PLC	± -
2 PLC	± -
3 PLC	± .015
4 PLC	± -
ANGLES	± -

MATERIAL SEE TABLE FINISH SEE TABLE

SCALE 4:1 SHEET 1 OF 1 REV C

单击下面可查看定价，库存，交付和生命周期等信息

[>>TE Connectivity\(泰科\)](#)