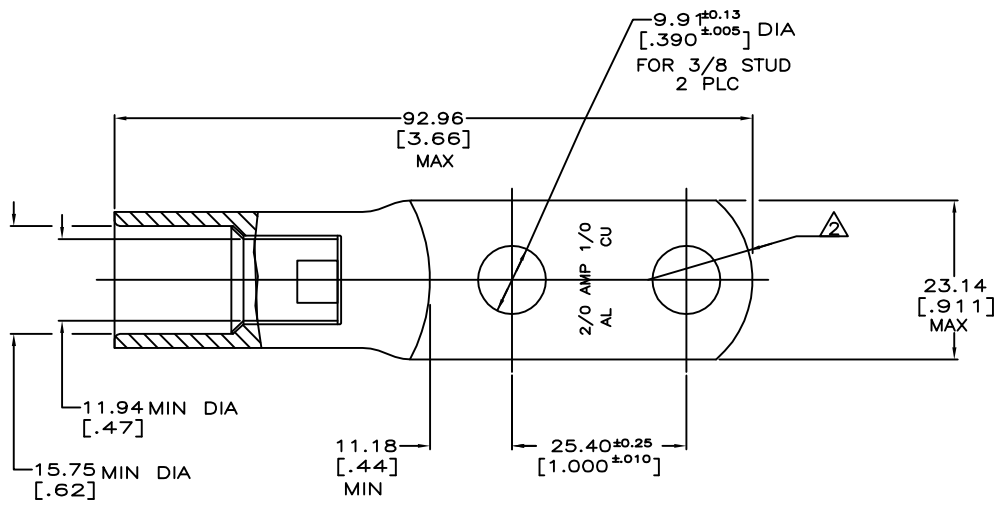
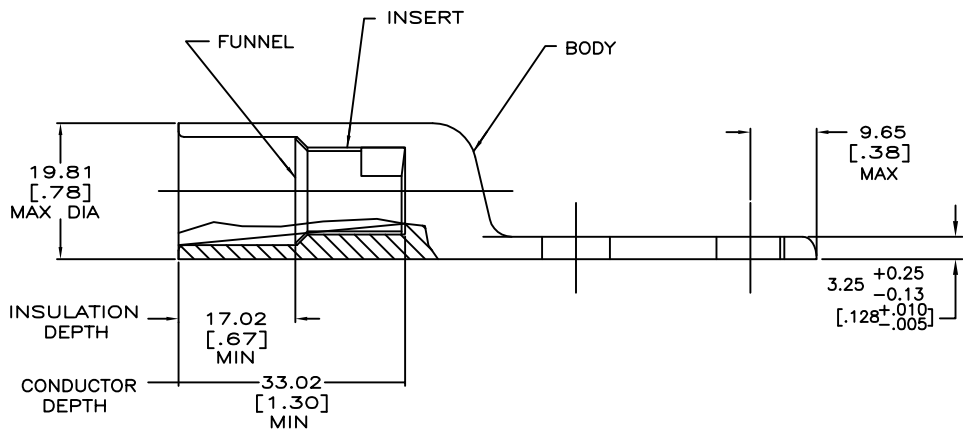


THIS DRAWING IS UNPUBLISHED. RELEASED FOR PUBLICATION
 © COPYRIGHT - By - ALL RIGHTS RESERVED.

REVISIONS					
#	LR	DESCRIPTION	DATE	DRW	APPD
1	H	REV PER ECO 18-000671	2-16-18	CT	PD



1 WIRE INSULATION: 12.70[.500] - 13.97[.550] DIA
 △ THE TONGUE RADIUS FEATURE IS NOT A TOOLING CONTROLLED DIMENSION AND MAY NOT BE A TRUE RADIUS.



BODY: COPPER ASTM-B187 ANNEALED TIN PL MIL-T-10727 0.00457[.000150] MIN THK	55839-1
INSERT & FUNNEL: BRASS PER ASTM B36 NICKEL PLATE SAE AMS QQ-N-290A, DATED JULY 2000, 0.00254 [.000100] MIN THK	
MATERIAL AND FINISH	PART NO.

THIS DRAWING IS A CONTROLLED DOCUMENT.		DRW: DK SCHRUM 6/15/92	
DIMENSIONS: mm [INCHES]		CHK: WJ VOCKROTH 6/16/92	
TOLERANCES UNLESS OTHERWISE SPECIFIED:		DRW: AJ KAUFMAN 6/16/92	NAME: AJ KAUFMAN
0 PLC ± -	1 PLC ± -	PRODUCT SPEC: 108-11011	WIRE TERMINAL, COPALUM SEALED, RING TONGUE, WIRE SIZE 2/0 AL, 1/0 COPPER
2 PLC ± -	3 PLC ± -	APPLICATION SPEC: 114-2134	RESTRICTED TO: -
4 PLC ± -	ANGLES ± -	WEIGHT: 0.000000	SIZE: A2
MATERIAL: SEE TABLE	FINISH: SEE TABLE	CAGE CODE: 00779	DRAWING NO: 55839
CUSTOMER DRAWING		SCALE: 2:1	SHEET: 1 of 1

单击下面可查看定价，库存，交付和生命周期等信息

[>>TE Connectivity\(泰科\)](#)