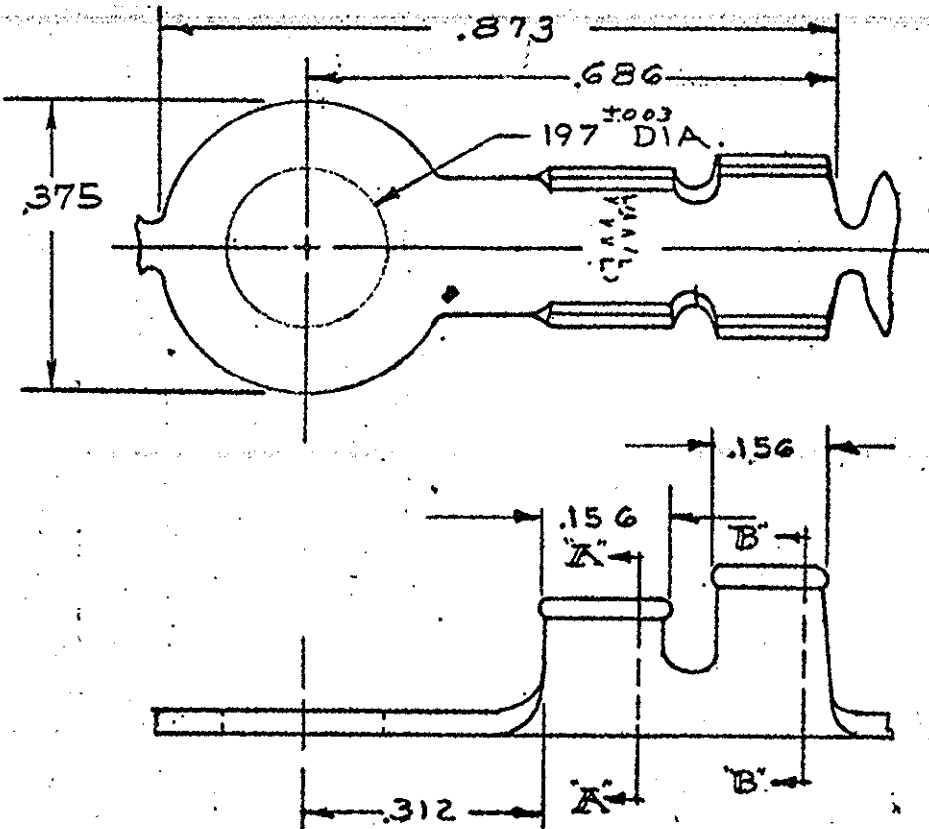


NUMBER 640007



SECT. A-A


SECT. B-B

1 CONTINUOUS STRIP, ON REELS

PART NO.	FINISH
640007-1	BRIGHT TIN
640007-3	TIN

DIMENSIONS IN INCHES. DO NOT SCALE PRINT.

UNPUBLISHED COPY NOT TO BE REPRODUCED NOR PUBLISHED WITHOUT WRITTEN PERMISSION OF AMP INCORPORATED.

C1 REV PER ECR-06-000453 MF DFD 9-JAN-06				©1973 BY AMP INCORPORATED. ALL RIGHTS RESERVED. AMP PRODUCTS COVERED BY PATENTS AND/OR PATENTS PENDING.		<b>CUSTOMER COPY REFERENCE ONLY</b>	
C REV PER 063A-0348-03 MF DFD 9-JUN-03				MATERIAL AND FINISH		 AMP INCORPORATED HARRISBURG, PENNA.	
B REV PER MSP DFD 5-MAY-03				.030 BRASS			
063A-0261-03				FINISH: SEE TABLE		CLASS —//—	
A REV PER AI-6785 — PMS 7/90				WIRE — RANGE — INSULATION #16-14 120-180		TYPE —//—	
LTR REVISION RECORD		ECN	DR	CHK	DATE	TOLERANCE EXCEPT AS NOTED ±.015 ±1° 0'	SCALE —//—
DR G Yetter 8-9-73		DE A.E. THORNTON 8-13-73	APP		NAME	LOC A	NO 640007
CHK 8-13-73		APP		RING		REV CI	

PRINT DIST 50

单击下面可查看定价，库存，交付和生命周期等信息

[>>TE Connectivity\(泰科\)](#)