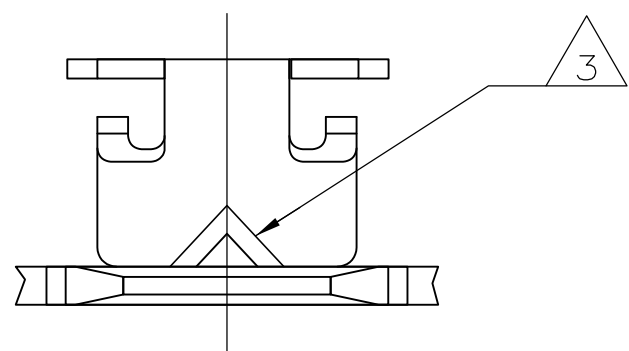
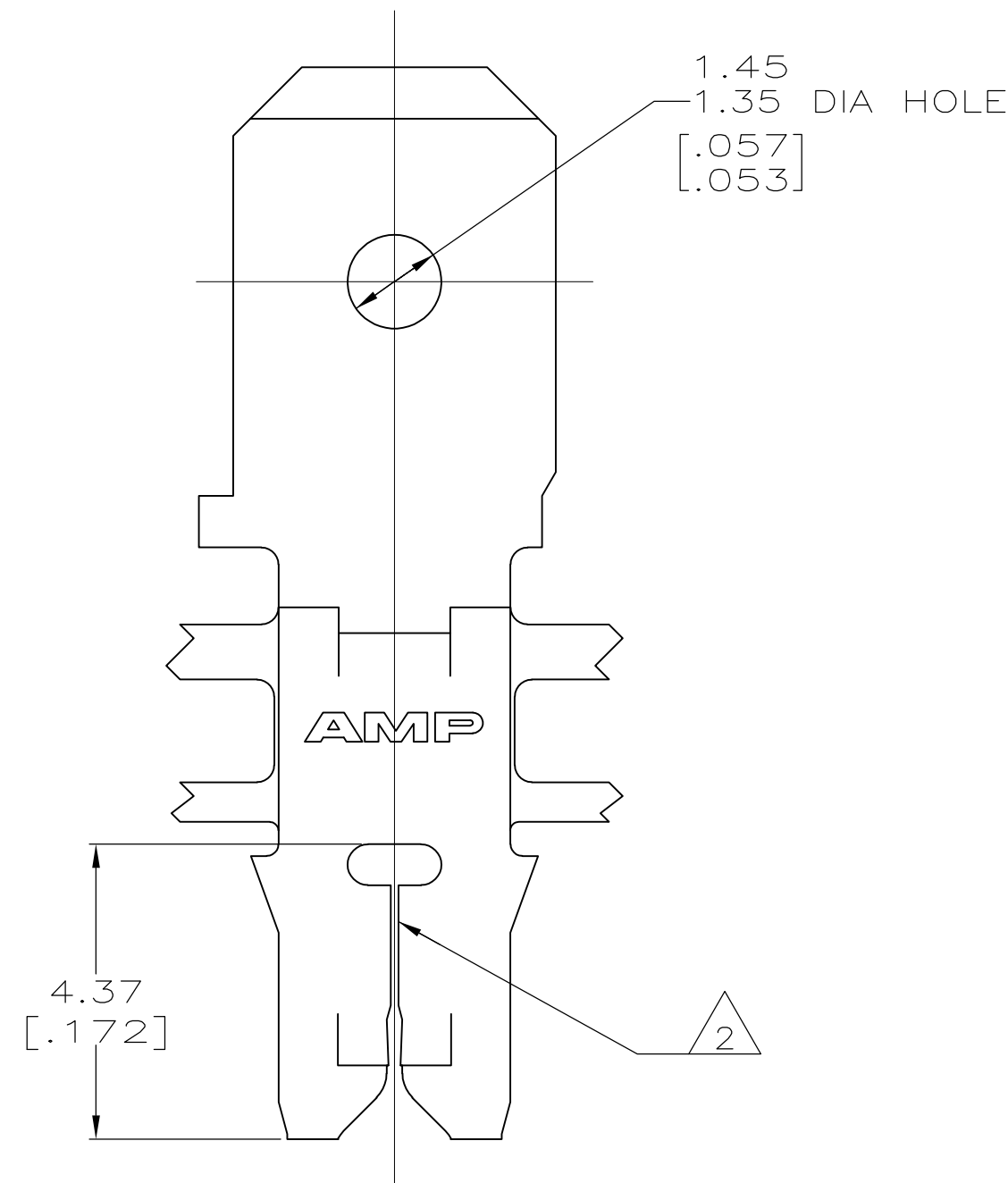
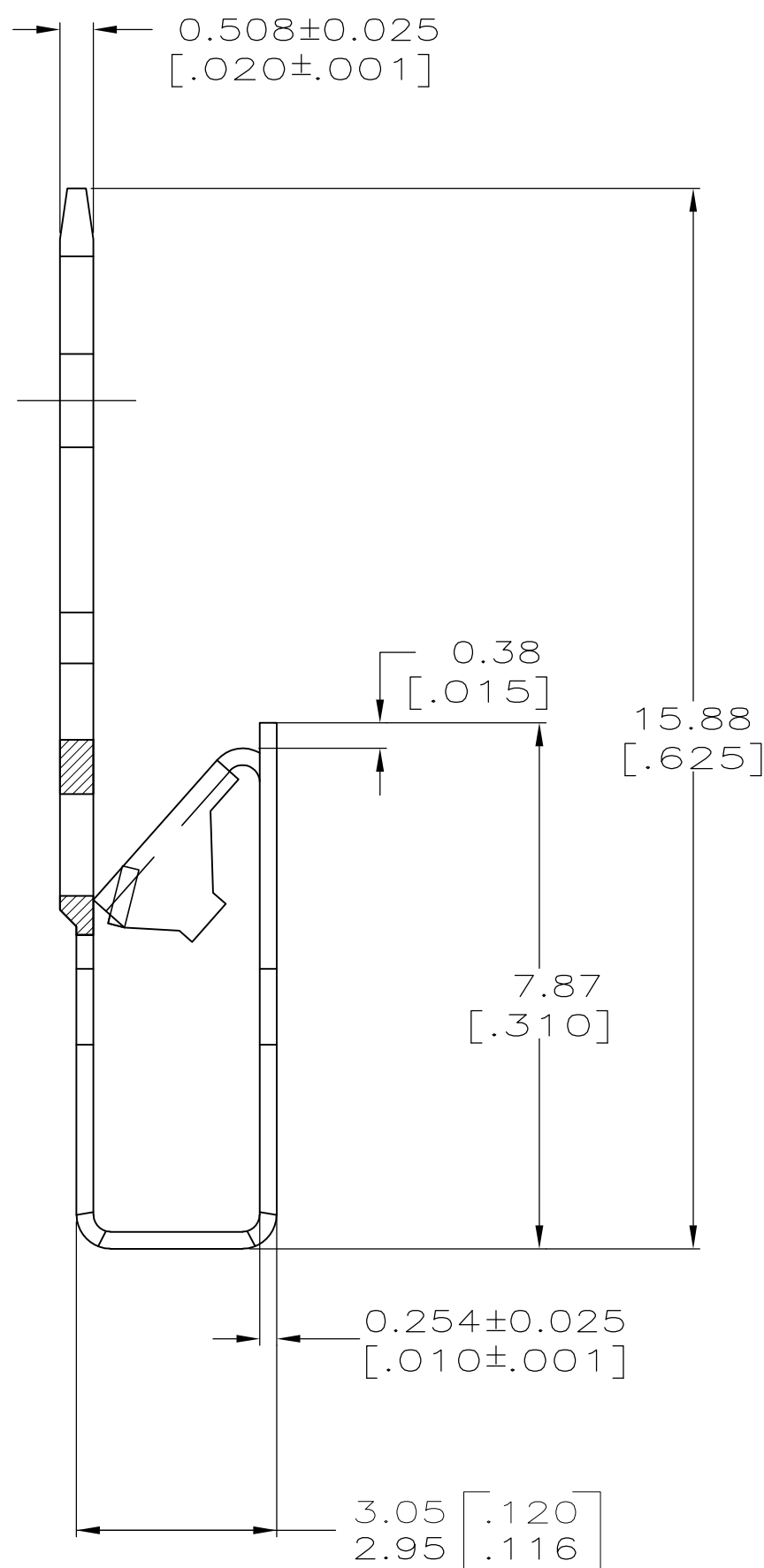
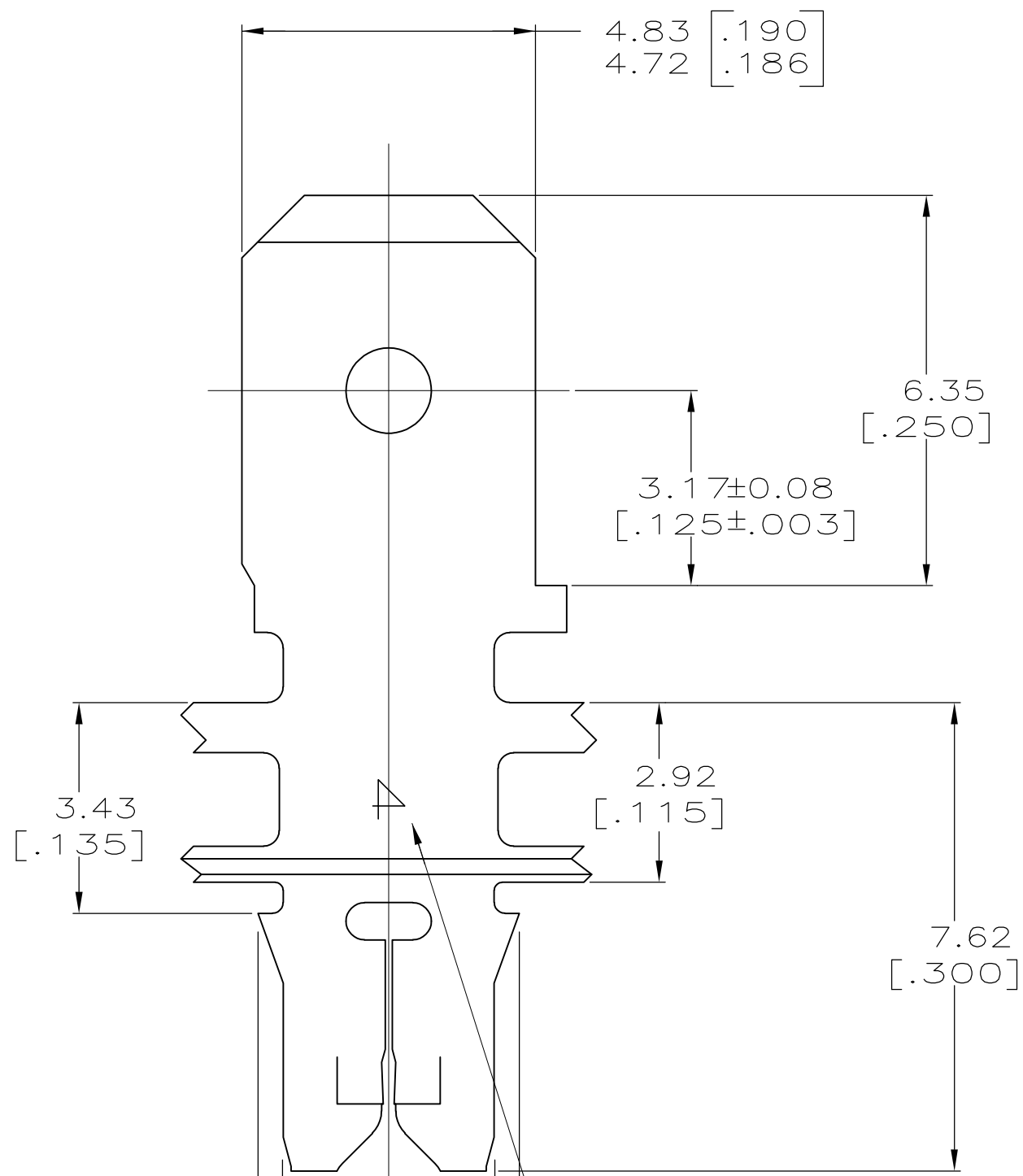


THIS DRAWING IS UNPUBLISHED. RELEASED FOR PUBLICATION  
 © COPYRIGHT - By - ALL RIGHTS RESERVED.

LOC		DIST		REVISIONS			
P	LTR	DESCRIPTION		DATE	DWN	APVD	
AF	50	F1	ECR-13-017177	05NOV13	PKS	RRP	



- 1 CONTINUOUS STRIP ON REELS WITH TERMINALS LOCATED ON 5.59±0.08 [.220±.003] CENTERS. SLOT ACCEPTS A SINGLE WIRE MAX OF 0.18-0.23mm [#33-#31] AWG COPPER MAGNET WIRE.
- 2 POKE-IN ACCEPTS A 0.5-0.8mm² [#20-#18] AWG SOLID OR FUSED STRANDED LEAD WIRE.
- 3 AFTER INSERTION INTO PLASTIC HOLDER TAB TO 90° OR PORTION MUST BE BENT OVER 45°
- 4 POTTED-IN TO PREVENT PULL-OUT WHEN MATING RECEPTACLE IS DISCONNECTED.



IDENTIFICATION NUMBER 4 FOR MAGNET WIRE RANGE

63018-1

THIS DRAWING IS A CONTROLLED DOCUMENT.		DWN RAY. R. B JR. 4-12-94	<b>STE</b> TE Connectivity	
DIMENSIONS: INCHES		CHK MICHAEL S. FEHER 4-22-94		
TOLERANCES UNLESS OTHERWISE SPECIFIED:		APVD NELSON E NEFF 4-27-94	NAME	
0 PLC ± -		PRODUCT SPEC 108-2012	TERMINAL, TAB, POKE-IN/4.75 [.187] FASTON™ COMBINATION, MAG-MATE™	
1 PLC ± -		APPLICATION SPEC 114-2046	SIZE A2	CAGE CODE 00779
2 PLC ± 0.25 [.010]		WEIGHT -	DRAWING NO C=63018	RESTRICTED TO -
3 PLC ± -		MATERIAL BRASS	SCALE 10:1	SHEET 1 OF 1
4 PLC ± -		FINISH TIN PLATED	CUSTOMER DRAWING	REV F1
ANGLES ± -				

单击下面可查看定价，库存，交付和生命周期等信息

[>>TE Connectivity\(泰科\)](#)