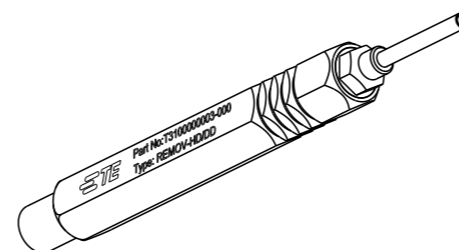
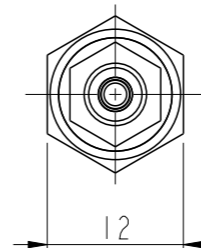
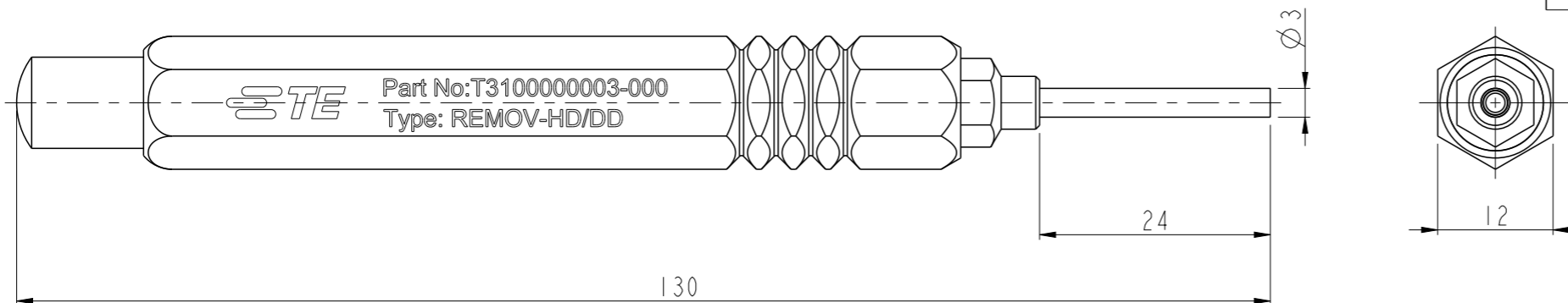


TYPE 1: WITH TE LOGO  
类型 1: 带TE LOGO

REVISIONS

P	LTR	DESCRIPTION	DATE	DWN	APVD
	A	INITIAL RELEASE	24JAN2019	WQR	CW



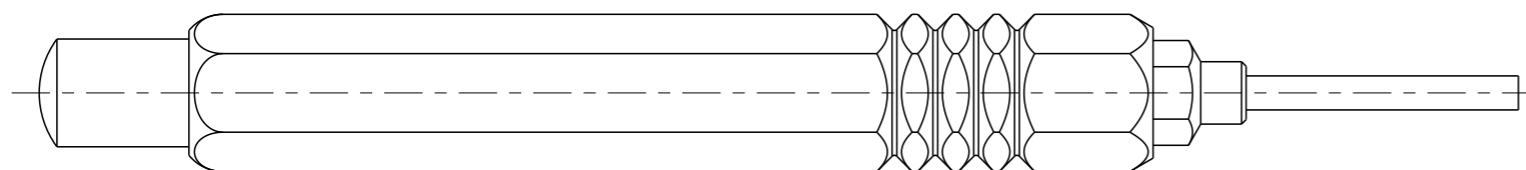
NOTES:

- TECHNICAL CHARACTERISTICS:  
HANDLE MATERIAL: ALUMINIUM ALLOY  
TIP MATERIAL: STAINLESS STEEL
- PRODUCT DESIGNED FOR 10A CONTACTS (CDM/CDF, DDM/DDF).  
PRODUCT DESIGNED FOR HD/HDD INSERT SERIAL.

注释:

- 技术参数:  
手柄材料: 铝合金  
尖端材料: 不锈钢
- 产品适用于10A插针(CDM/CDF, DDM/DDF).  
产品适用于HD/HDD系列器件.

TYPE 2: THIS TYPE IS SAME AS TYPE 1, ONLY NO LOGO  
类型 2: 此类型同类型1, 只是无LOGO



T310000003-001	REMOV-HD/HDD, NO MARKING	HD/HDD REMOVE TOOL, NO MARKING HD/HDD退针器, 未打字	TYPE 2 类型 2
T310000003-000	REMOV-HD/HDD	HD/HDD REMOVE TOOL HD/HDD退针器	TYPE 1 类型 1
PART NUMBER 料号	PART DESCRIPTION 描述		TYPE 类型

THIS DRAWING IS A CONTROLLED DOCUMENT.		DWN 24JAN2019 WENQING RAO	TE Connectivity	
		CHK 24JAN2019 GINO YAO		
		APVD 24JAN2019 CHRIS WANG	NAME REMOV-HD/HDD	
DIMENSIONS: mm		PRODUCT SPEC -		SIZE A3
TOLERANCES UNLESS OTHERWISE SPECIFIED:		APPLICATION SPEC -		CAGE CODE -
0 PLC ±-	1 PLC ±-	WEIGHT -		DRAWING NO G-T31000000300X
2 PLC ±-	3 PLC ±-	CUSTOMER DRAWING		RESTRICTED TO
4 PLC ±-	ANGLES ±-	SCALE 3:2		SHEET 1 OF 1
MATERIAL -	FINISH -	REV A		

单击下面可查看定价，库存，交付和生命周期等信息

[>>TE Connectivity\(泰科\)](#)