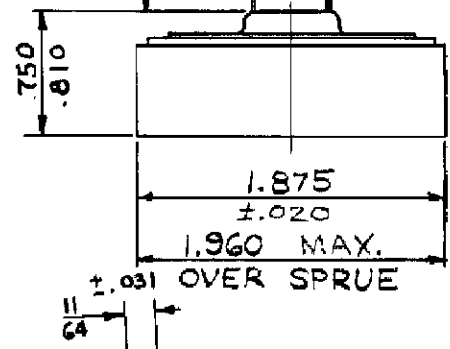
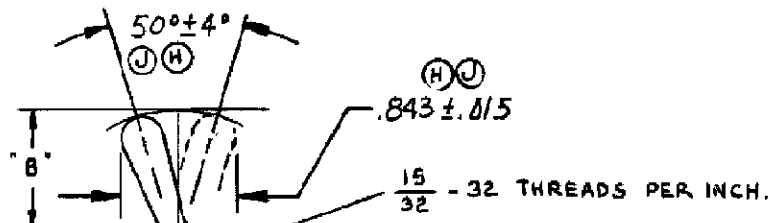
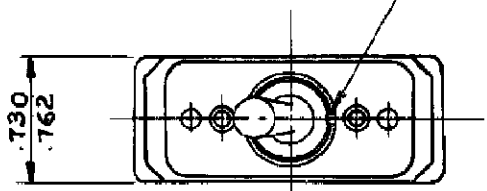


90-2200

A

G	REVISIONS	702A500001
H	TOP DA COVER ADDED 33°±4° .675±.015	G.S. [initials] 1/24/52 9300102
J	50°±4° WAS 33°±4° .843±.015 WAS .675±.015	WL JW 11/9/52 9300110

.068 WIDE X .038 DEEP KEYWAY
.071



THESE HOLES FOR
RELEASE TOOLS.
RELEASE TOOLS TO BE
OF HARDENED STEEL.
.072 — #18 WIRE
.083 — #16 WIRE
.093 — #14 WIRE

3/32 SQ. HOLES TO ACCEPT #18, #16 OR #14
STRANDED TIN DIPPED WIRE LEADS SKINNED
.375 ±.032.
RECOMMEND NOT INSERTING #18 WIRE
AFTER HAVING REMOVED
#14 WIRE.

TERMINAL LEADS
TO BE PLUGGED IN
THIS END OF
SWITCH FOR
SINGLE POLE
SWITCHES

15/32"	.661-.733
11/32"	.668-.740
BUSHING LENGTH "A"	DIM. "B"

DN 81-6650-10
DN 81-6650-11A122

TITLE				DIMENSIONS FOR TOOL HANDLE SWITCH			
SUP'S. NON-INTERCHANGEABLE	FIRST ASSEM. WHERE LISTED	DR.	CHK.	INDEX	YES		
	D 90-2195	G. F. LAMBOY	3-15 57	L. SOTO	529.57	NO	
BUR'D. BY NON-INTERCHANGEABLE	APR.	DATE					
	[Signature]	5/29/57					
CUTLER-HAMMER INC. MILWAUKEE			NEW YORK		<h1 style="font-size: 2em;">90-2200</h1>		

A .01 DIA. OF WIRE RELEASE WAS 6-EL 10/52
 B .070 DIA. BY 81-6630-10 11/24/52
 C SQUARE TERM. HOLES WERE ROUND 11/24/52
 D DIM. 375 ±.032 WAS 375 ±.032 11/24/52
 E DIM. 375 ±.032 WAS 375 ±.032 11/24/52
 F ADDED 1.960 MAX. DIM. 10/24/52

单击下面可查看定价，库存，交付和生命周期等信息

[>>TE Connectivity\(泰科\)](#)