

4

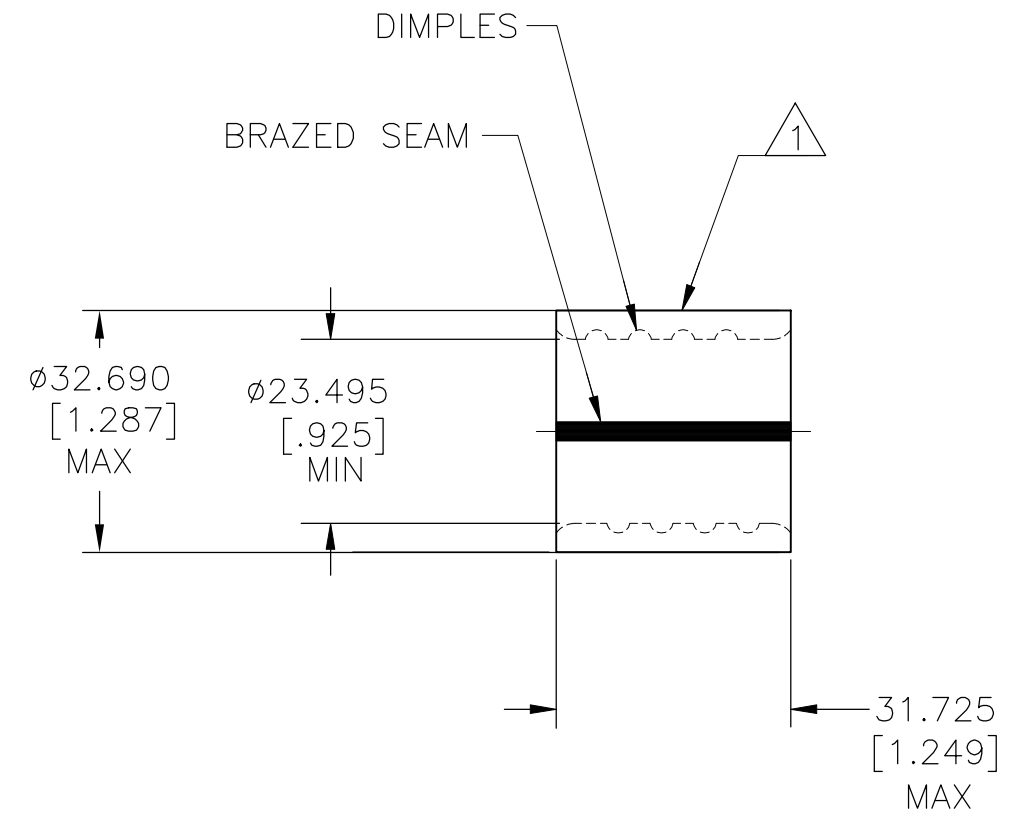
3

2

1

THIS DRAWING IS UNPUBLISHED. RELEASED FOR PUBLICATION  
 © COPYRIGHT - TE Connectivity Ltd. ALL RIGHTS RESERVED.

REVISIONS				
P	LTR	DESCRIPTION	DATE	APVD
	D	REV PER 0G3A-0435-02	30SEP02	JR
	D1	REVISED PER ECO-19-001989	08FEB2019	RS DR



<b>AMP</b> WIRE RANGE	E13288 Listed
400 MCM STRANDED	400 MCM STRANDED
LR7189 Certified	MILITARY P/N AND CLASS
400 MCM STRANDED	NOT APPLICABLE

- 1 STAMP AMP W\* 400 MCM APPROX AS SHOWN
- 2 MATERIAL THK: 3.911±0.102[.154±.004]
- 3 STAMP FOR MANUFACTURING LOCATION OR CODE PERMISSIBLE.

D

D

C

C

B

B

A

A

AMP INCORPORATED CUSTOMER SERVICE SYSTEMS		THIS DRAWING IS A CONTROLLED DOCUMENT.		DWN DK SCHRUM 5/6/93	TE Connectivity NAME SPLICE, PARALLEL, SOLISTRAND, WIRE SIZE: 400 MCM
FOR ADDITIONAL PRODUCT INFORMATION OR COPIES OF DRAWINGS AND TECHNICAL DOCUMENTS	PRODUCT INFORMATION CENTER 1-800-522-6752	MAX RECOMMENDED OPERATING TEMPERATURE: 170°C [338°F] MAX	DIMENSIONS: mm [INCHES]	CHK AJ KAUFMAN 5/14/93	
FOR APPLICATION TOOLING INFORMATION	TOOLING ASSISTANCE CENTER 1-800-722-1111	VOLTAGE RATING: NOT APPLICABLE		APVD RE ROSER 5/14/93	
FOR ORDER ENTRY	1-800-526-5142	CIRCULAR MIL AREA: 192.5-242.2mm²[380-478] MCM STRANDED	MATERIAL COPPER PER ASTM B-152 ANNEALED	FINISH TIN PLATE 0.00254[.000100] MIN THK PER ASTM B545	
				PRODUCT SPEC UL 486C	SIZE A3
				APPLICATION SPEC -	CAGE CODE 00779
				WEIGHT -	DRAWING NO C-322277
				CUSTOMER DRAWING	RESTRICTED TO -
				SCALE 1:1	SHEET 1 OF 1
				REV D1	

单击下面可查看定价，库存，交付和生命周期等信息

[>>TE Connectivity\(泰科\)](#)