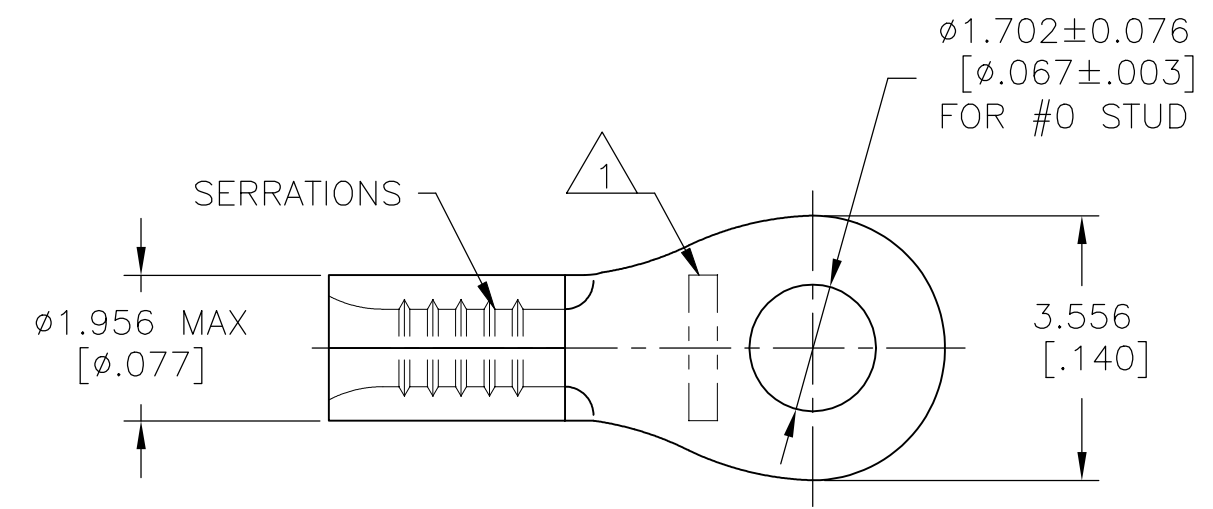


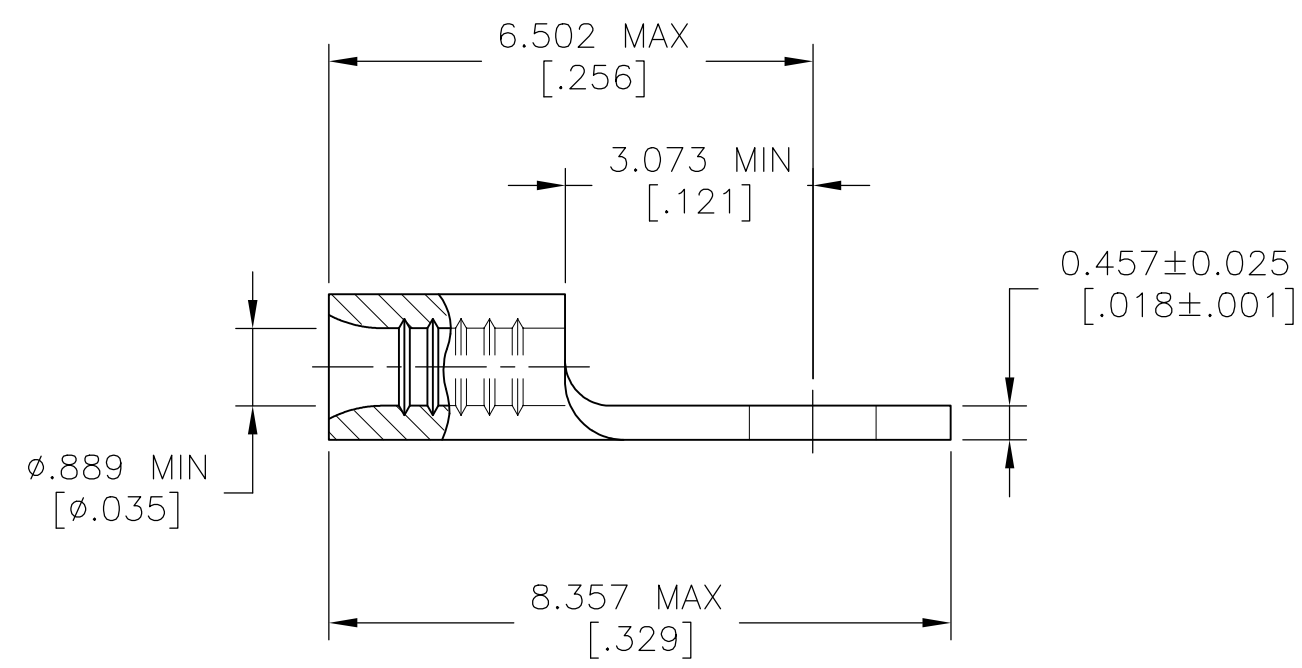
THIS DRAWING IS UNPUBLISHED. RELEASED FOR PUBLICATION
 © COPYRIGHT - By - ALL RIGHTS RESERVED.

REVISIONS					
P	LTR	DESCRIPTION	DATE	DWN	APVD
B2		REVISED PER ECO-13-001411	25JAN13	KH	DR
B3		REVISED PER ECO-17-008806	20FEB2018	RS	DR



- 1 STAMP AMP APPROX AS SHOWN
- 2 COPPER PER ASTM B-152, ANNEALED.
- 3 0.00254 [.000100] MIN TIN PLATE PER ASTM B-545
- 4 NOTE DELETED
- 5 NOTE DELETED

AMP WIRE RANGE	Listed FILE E13288	LR7189 Certified
26-22 AWG STRANDED	NOT LISTED	NOT CERTIFIED



	1000	LOOSE PIECE	31423
FINISH	QTY	PACKAGE TYPE	PART NO

AMP INCORPORATED CUSTOMER SERVICE SYSTEMS		MAX. RECOMMENDED OPERATING TEMPERATURE:	THIS DRAWING IS A CONTROLLED DOCUMENT.		DWN	2-2-93	TE Connectivity Ltd.
		170°C [338°F] MAX	DIMENSIONS:	TOLERANCES UNLESS OTHERWISE SPECIFIED:	CHK	2-2-93	
FOR ADDITIONAL PRODUCT INFORMATION OR COPIES OF DRAWINGS AND TECHNICAL DOCUMENTS	PRODUCT INFORMATION CENTER 1-800-522-6752	VOLTAGE RATING:	mm [INCHES]	0 PLC ± - 1 PLC ± - 2 PLC ± - 3 PLC ± 0.127 [.005] 4 PLC ± - ANGLES ± -	APVD	2-2-93	NAME
FOR APPLICATION	TOOLING ASSISTANCE CENTER	N/A		SEE TABLE	DE MILLER		TERMINAL, RING
TOOLING INFORMATION	1-800-722-1111	CIRCULAR MIL AREA:			MATERIAL	FINISH	UL 486 A-B
FOR ORDER ENTRY	1-800-526-5142	0.1-0.41mm² [202-810] STRANDED	COPPER		—	—	26-22 AWG
		THIS DRAWING IS A CONTROLLED DOCUMENT FOR AMP INCORPORATED. IT IS SUBJECT TO CHANGE AND THE CONTROLLING ENGINEERING ORGANIZATION SHOULD BE CONTACTED FOR THE LATEST REVISION.			WEIGHT		SIZE
							CAGE CODE
							DRAWING NO
							RESTRICTED TO
							—
							SCALE
							10:1
							SHEET
							1 of 1
							REV
							B3

单击下面可查看定价，库存，交付和生命周期等信息

[>>TE Connectivity\(泰科\)](#)