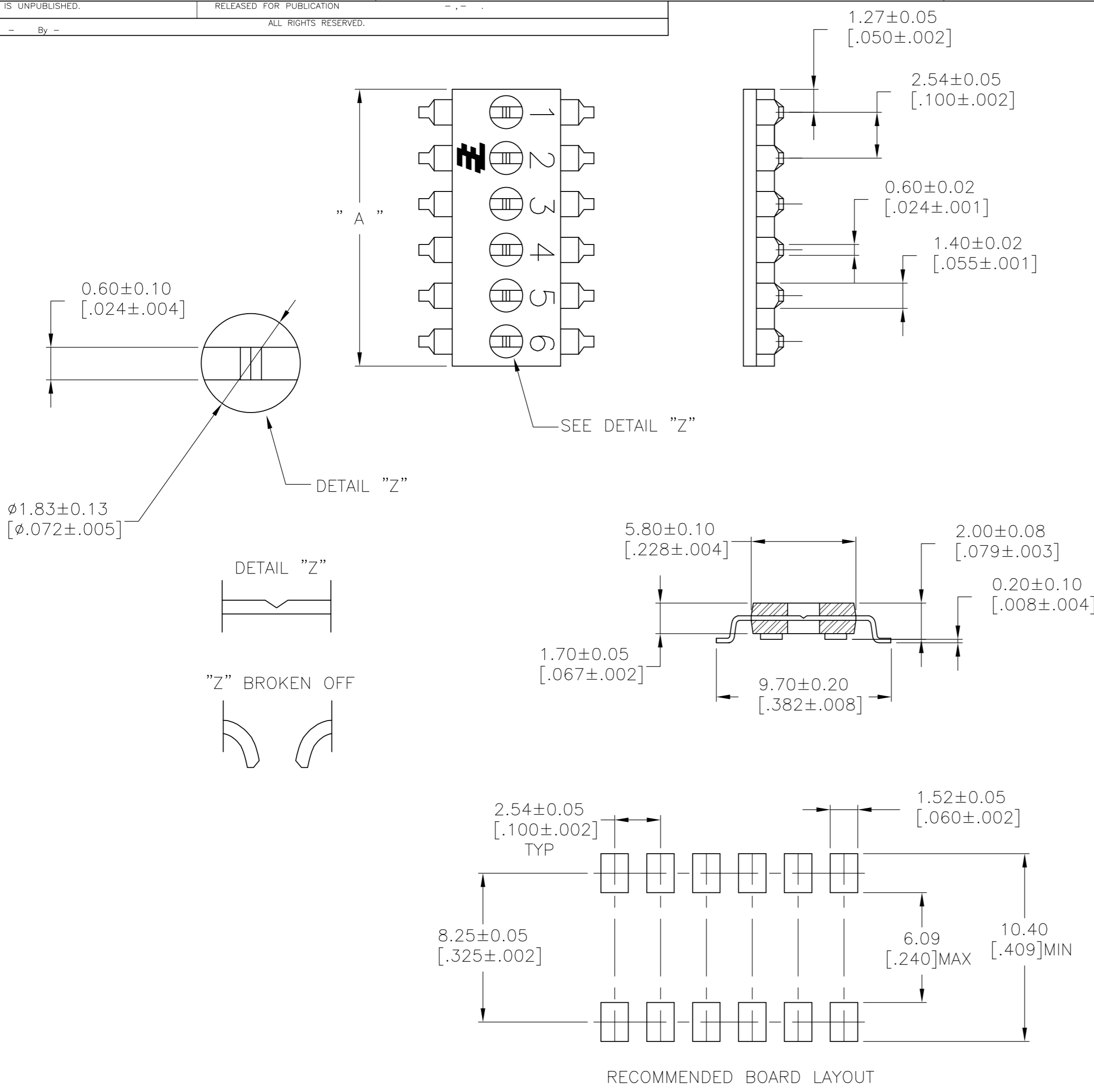


THIS DRAWING IS UNPUBLISHED. RELEASED FOR PUBLICATION  
 © COPYRIGHT - By - ALL RIGHTS RESERVED.

REVISIONS				
P	LTR	DESCRIPTION	DATE	APVD
C		REVISED PER ECO-12-007413	21APR12	KH PO
D		REVISED PER ECO-17-001163	27APR2017	RK PO



DIM A	POSITION	PART NO.
30.48 [1.200]	12	2-1825189-0
25.40 [1.000]	10	1-1825189-9
22.86 [.900]	9	1-1825189-8
20.32 [.800]	8	1-1825189-7
17.78 [.700]	7	1-1825189-6
15.24 [.600]	6	1-1825189-5
12.70 [.500]	5	1-1825189-4
10.16 [.400]	4	1-1825189-3
7.62 [.300]	3	1-1825189-2
2.54 [.200]	2	1-1825189-1
30.48 [1.200]	12	1-1825189-0
25.40 [1.000]	10	1825189-9
22.86 [.900]	9	1825189-8
20.32 [.800]	8	1825189-7
17.78 [.700]	7	1825189-6
15.24 [.600]	6	1825189-5
12.70 [.500]	5	1825189-4
10.16 [.400]	4	1825189-3
7.62 [.300]	3	1825189-2
2.54 [.200]	2	1825189-1

**SPECIFICATIONS:**

**MATERIAL**

CASE: HTN 30% GF UL94V-0, BLACK  
 TERMINAL: COPPER ALLOY, TIN OVER NICKEL PLATE

- 1 ALL MATERIALS AND FINISHES SHALL COMPLY WITH EU DIRECTIVE 2002/95/EC OF 27JAN2003 (ROHS)
- 2 TAPE AND REEL PER EIA-481

THIS DRAWING IS A CONTROLLED DOCUMENT.		DWN B.S.VISWESWARA 10MAY05																				
DIMENSIONS: mm [INCHES]		CHK M.S.SARVER																				
TOLERANCES UNLESS OTHERWISE SPECIFIED:		APVD M.S.SARVER	NAME SHUNT, DIP, PROGRAMMABLE SMT																			
<table border="1"> <tr><td>0 PLC</td><td>±</td><td>-</td></tr> <tr><td>1 PLC</td><td>±</td><td>-</td></tr> <tr><td>2 PLC</td><td>±</td><td>0.03[.001]</td></tr> <tr><td>3 PLC</td><td>±</td><td>-</td></tr> <tr><td>4 PLC</td><td>±</td><td>-</td></tr> <tr><td>ANGLES</td><td>±</td><td>-</td></tr> </table>		0 PLC	±	-	1 PLC	±	-	2 PLC	±	0.03[.001]	3 PLC	±	-	4 PLC	±	-	ANGLES	±	-	PRODUCT SPEC -	SIZE A2	
0 PLC	±	-																				
1 PLC	±	-																				
2 PLC	±	0.03[.001]																				
3 PLC	±	-																				
4 PLC	±	-																				
ANGLES	±	-																				
MATERIAL -		FINISH -	APPLICATION SPEC -	CAGE CODE 00779																		
		WEIGHT -	DRAWING NO C=1825189	RESTRICTED TO -																		
CUSTOMER DRAWING			SCALE 5:1	SHEET 1 OF 1																		

单击下面可查看定价，库存，交付和生命周期等信息

[>>TE Connectivity\(泰科\)](#)