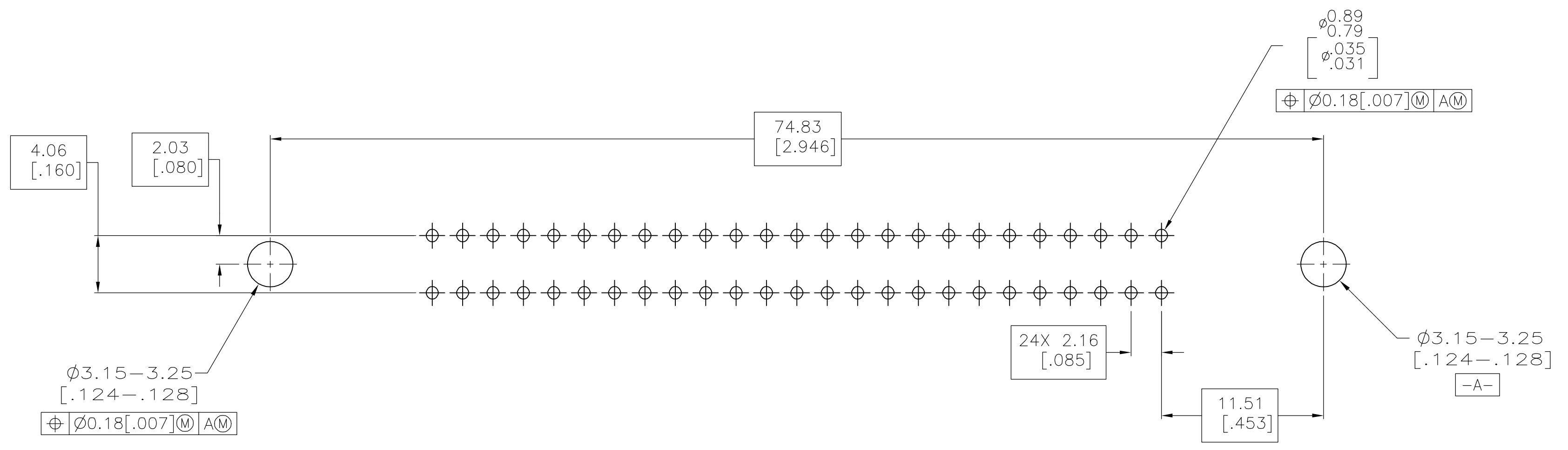
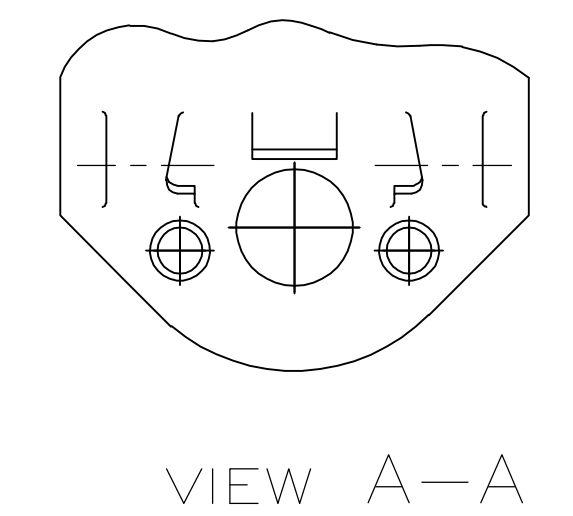
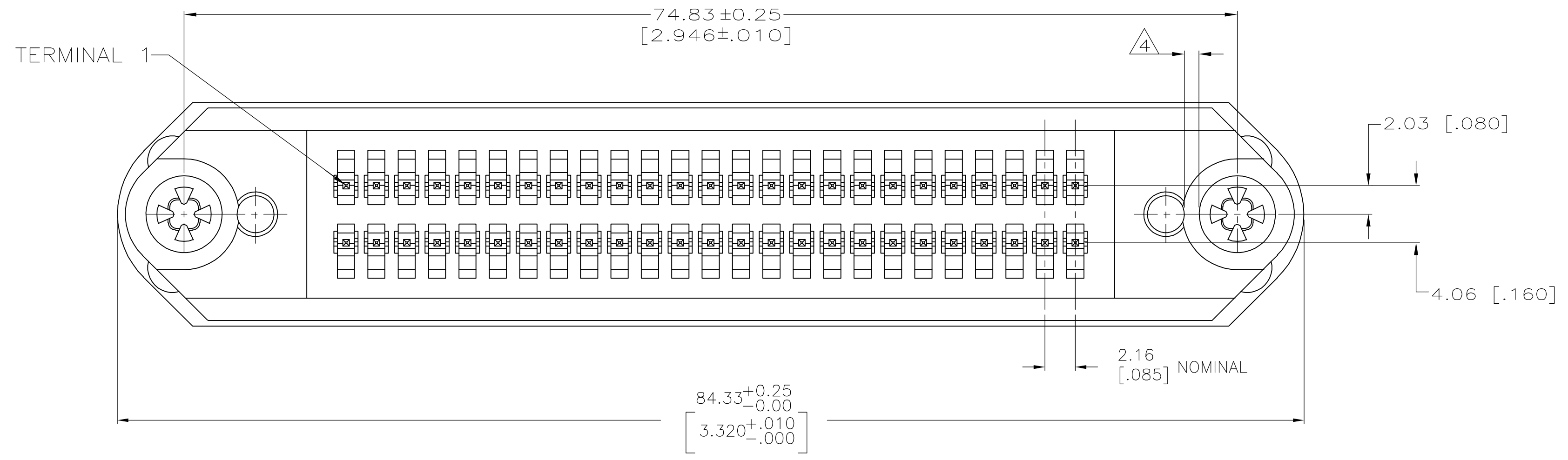


- 1 MATERIAL:  
 HOUSING: POLYESTER, BLACK.  
 TERMINAL: COPPER ALLOY PLATED WITH 0.76μm [.000030] MINIMUM GOLD ON MATING SURFACE AND 3.81μm [.000150] MINIMUM TIN ON SOLDER PIN AREA OVER 1.27μm [.000050] MINIMUM NICKEL UNDERPLATE OVER ENTIRE TERMINAL.  
 SHIELD: CARBON STEEL, PLATED BRIGHT NICKEL 2.54μm [.000100] MINIMUM.  
 BAIL CLIP: PASSIVATED STAINLESS STEEL.  
 BOARDLOCK: COPPER ALLOY WITH 5.08μm [.000200] MINIMUM TIN OVER 1.27μm [.000050] MINIMUM NICKEL UNDERPLATE.  
 EYELET: BRASS WITH 1.02μm [.000040] MINIMUM STANNATE TIN ELECTROPLATE.
- 2 THE CONTACT SURFACES OF THE TERMINALS ARE COATED WITH LUBRICANT.
- 3 "1" ON THE HOUSING INDICATES LOCATION OF TERMINAL 1.
- 4 .04 INCH MINIMUM BETWEEN EYELET HEAD AND .10 DIAMETER HOLE IN HOUSING, 2 PLACES.
- 5 EYELET SHALL PROVIDE A CONTINUOUS AND RELIABLE GROUND PATH THROUGH THE BOARDLOCK.
- 6 LOCKING TAB RETAINS ENDS OF BAILS IN SHIELD LOCATIONS.



PRINTED CIRCUIT BOARD  
 MOUNTING DIMENSIONS

5406874-1  
 PART NUMBER

THIS DRAWING IS A CONTROLLED DOCUMENT.		DWG: B. MCMASTER	13JULY05		Tyco Electronics Corporation Harrisburg, Pa 17105-3608	
DIMENSIONS: mm [INCHES]		CHK: J. GERACE	13JULY05		AP'D: M. WALMSLEY	NAME: RECEPTACLE ASSEMBLY, 50 POSITION, BOARDLOCK, SHIELDED, LOW PROFILE, VERTICAL MOUNTING, WITH LOCKING TAB
TOLERANCES UNLESS OTHERWISE SPECIFIED:		0 PLC ± -		PRODUCT SPEC	SIZE: A1	
1 PLC ± -		2 PLC ± 0.13 [.005]		APPLICATION SPEC	CAGE CODE: 5406874	
3 PLC ± -		4 PLC ± -		RESTRICTED TO	SCALE: 4:1	
ANGLES ± -		FINISH		WEIGHT	SHEET 1 OF 1	
MATERIAL		FINISH		CUSTOMER DRAWING	REV 0	

单击下面可查看定价，库存，交付和生命周期等信息

[>>TE Connectivity\(泰科\)](#)