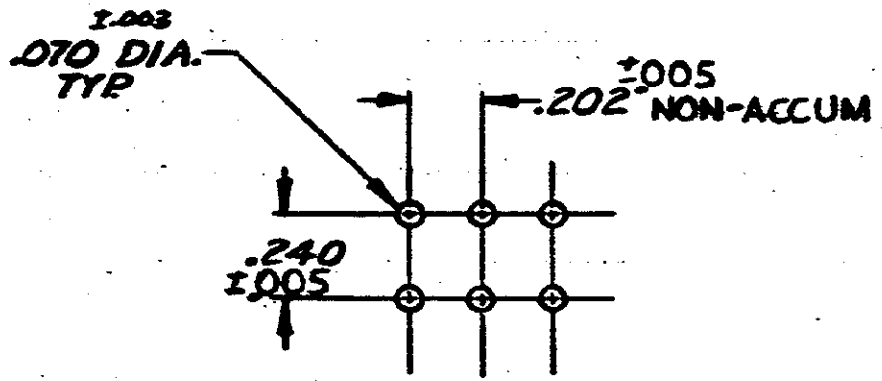
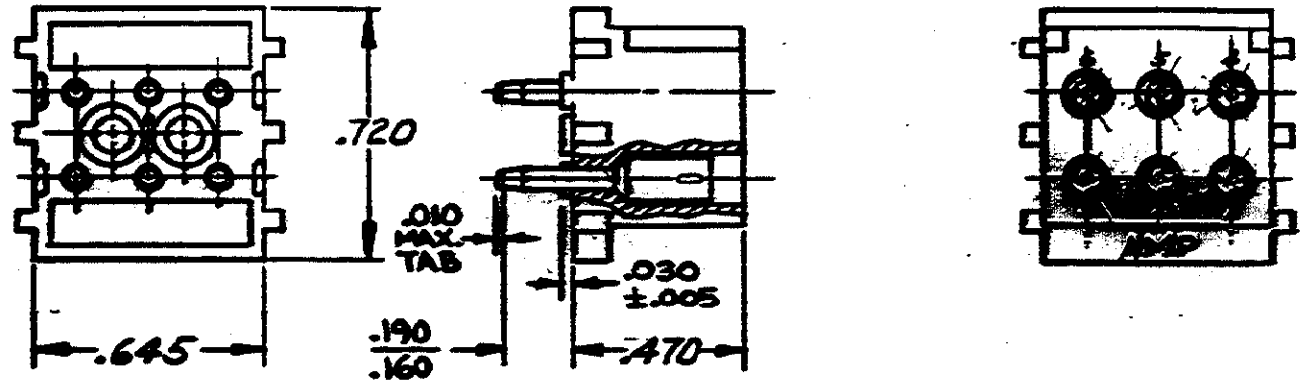


4. DIMENSION SHOWN REPRESENT PRODUCT IN DRY CONDITION. ADDITIONAL 2% GROWTH DUE TO END USE LOCATION MOISTURE ABSORPTION MAY OCCUR AND SHOULD BE ACCOUNTED FOR.



RECOMMENDED LAYOUT FOR .062 THICK P.C. BOARD

- 1. MATES WITH HOUSING 480276
- 2. PARTS COMPLY WITH AMP SOLDERABILITY SPEC. #109-11-3
- 3. OBSOLETE PARTS: OBSOLETE CIS STREAMLINING PER D.RENAUD/D.SINISI

3 OBSOLETE

ASSEMBLY NO.	HSG. MATL & COLOR	PIN MATL & FINISH
350641-2	NYLON - NATURAL	PHOS BRZ - GOLD
350641-1	NYLON - NATURAL	PHOS BRZ - PRE-TIN

Unpublished copy not to be reproduced nor published without written permission of AMP Incorporated

G	OBSOLETE 1-11-72	KW	RS	A-21	86
F	RESTORED	SK	RS	9/5/85	
F	REV PER M-7376	SS	CA	5/20/85	
E	REVISED M-3932	MF	D.H.	2-28-77	
D	ECN M-3871	REN	D.H.	9-9-72	
C	ECN M-3952	GY	RSE	7/4/74	
B	RELEASED FOR PWD	DR	D.L.	7/1/75	
A	ECN M-3152	CP	SM	7/1/75	
	PER ECN M-2996	HS	DL	5/1/74	

NUMBER	REQUIRED PER ASSEMBLY	DESCRIPTION
350641		

© 1973 AMP INCORPORATED. ALL RIGHTS RESERVED. AMP PRODUCTS COVERED BY PATENTS AND/OR PATENTS PENDING.

OR 9. Edman 5-31-73

CHK 2 Chrom 4-5-74

DE CM Poth... 4/5/74

AMP EM... 4/5/74

MATERIAL AND FINISH: SEE TABLE

WIRE RANGE - INSULATION: H

TOLERANCE EXCEPT AS NOTED: ±.015

SCALE: H

LOC: CM B

NO: 350641

NAME: 6 CIRCUIT MATE-N-LOK P.C. BOARD SOCKET HEADER

CUSTOMER COPY REFERENCE ONLY

TE Connectivity

G2	REVISED PER ECR-21-117185	PJ	VS	20OCT2021
G1	REV PER ECO-09-026346	KK	AEG	NOV09

LTN	REVISION RECORD	DR	CHK	DATE	LTN	REVISION RECORD	DR	CHK	DATE
-----	-----------------	----	-----	------	-----	-----------------	----	-----	------

DIMENSIONS IN INCHES. DO NOT SCALE PRINT.

单击下面可查看定价，库存，交付和生命周期等信息

[>>TE Connectivity\(泰科\)](#)