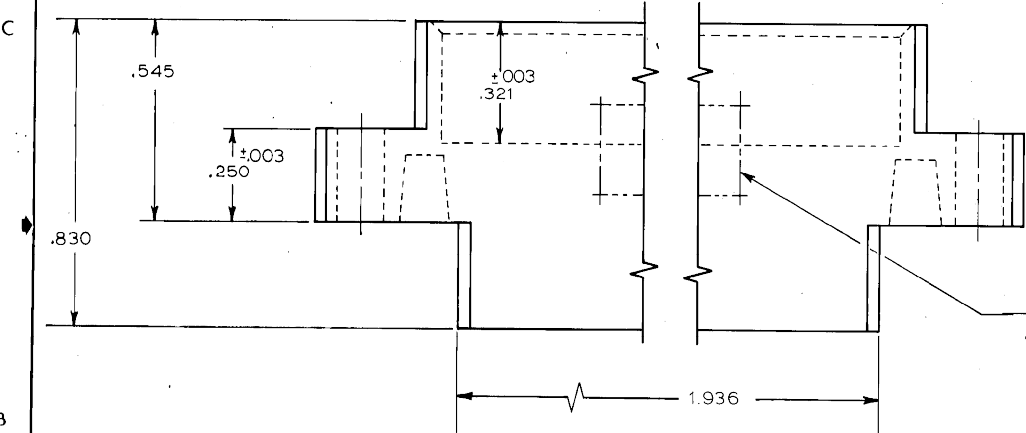
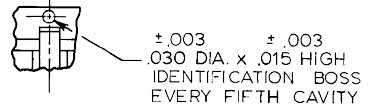
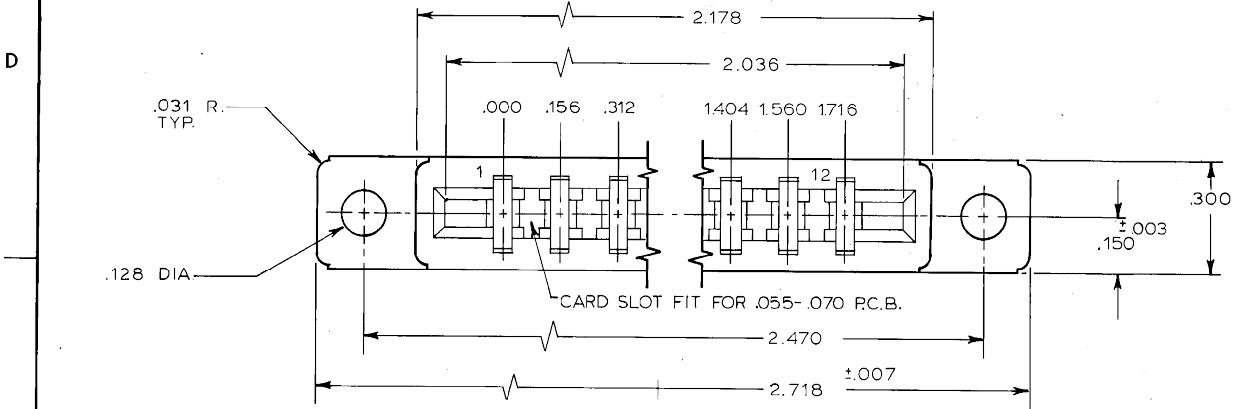
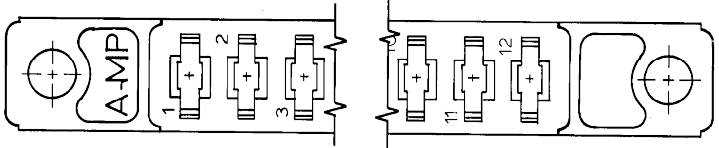


THIS DRAWING IS UNPUBLISHED. RELEASED FOR PUBLICATION NOVEMBER 8, 1967.  
 © COPYRIGHT 1967 BY AMP INCORPORATED, HARRISBURG, PA. ALL INTERNATIONAL RIGHTS RESERVED. AMP PRODUCTS MAY BE COVERED BY U.S. AND FOREIGN PATENTS AND/OR PATENTS PENDING.

REVISIONS						
P	F	ZONE	LTR	DESCRIPTION	DATE	APPROVED
			F	REDWN/AD0314	SR 5/4/84	HWR
			G	REDRAWN PER COIO-1301-94	11/3/94	55/
			H	REV PER ECO-0630-233-01	08OCT81	MM
			K	REVISED PER ECO-17-014152	04JAN2018	RS MM
			L	REVISED PER ECO-19-014055	12SEP2019	RS MM



MARKED "AMP", PART NO., AND DATE CODE



1. USE ON CONTACT KEYING PLUG NO. 5832B3-1
2. USE CONTACT NO. 583259
3. GLASS FILLED NYLON, COLOR: BLACK, OR GLASS FILLED POLYESTER, COLOR: BLACK.

583300 -1		AS SHOWN	
CODE IDENT	DWG SIZE	PART NO OR IDENTIFYING NO	NOMENCLATURE OR DESCRIPTION
← REVISION OF EACH ASSY NO (WHEN BLANK, USE DWG REVISION)			ITEM NO
QTY REQD PER ASSY		PARTS LIST	
UNLESS OTHERWISE SPECIFIED DIMENSIONS ARE IN INCHES. TOLERANCES ON: DECIMALS ±.005 ANGLES ±		CONTRACT NO	
MATERIAL		DR <i>S. Roycroft 5-4-84</i>	
FINISH		CHK <i>H.W. Rose 5/30/84</i>	
OTHER APPD		APPD <i>Howard W. Rose 5/30/84</i>	
SCALE 4:1		SIZE C	FSCM NO 00779
SHEET 1 OF 1		DRAWING NO 583300	
		REV L	

CUSTOMER DRAWING

单击下面可查看定价，库存，交付和生命周期等信息

[>>TE Connectivity\(泰科\)](#)