

4

3

2

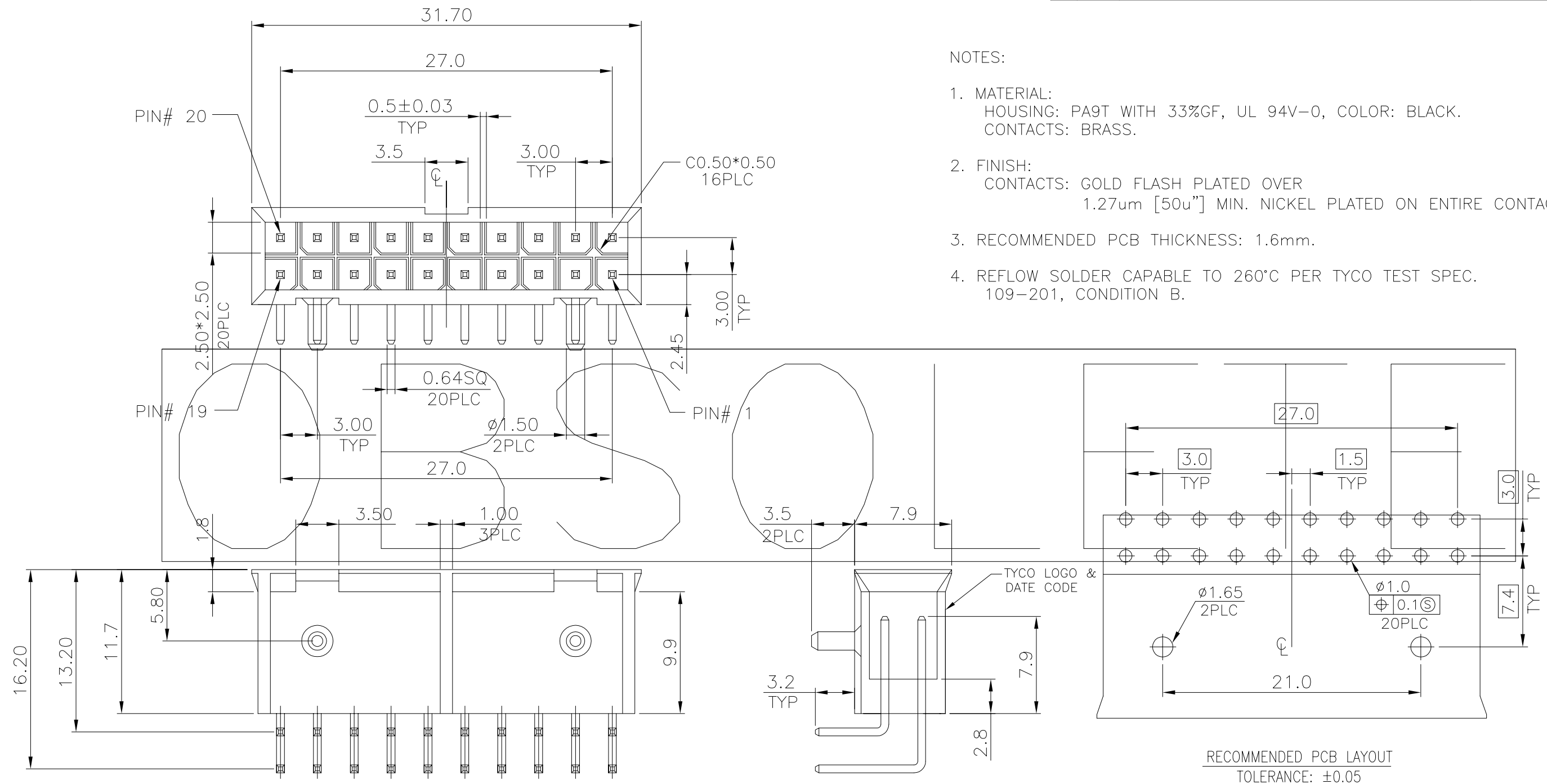
1

THIS DRAWING IS UNPUBLISHED. RELEASED FOR PUBLICATION  
 © COPYRIGHT BY TYCO ELECTRONICS CORPORATION. ALL RIGHTS RESERVED.

LOC	DIST	REVISIONS			
P	LTR	DESCRIPTION	DATE	DWN	APVD
DW	-	B	PER ECR-15-011649	10SEP15	DS FY

NOTES:

- MATERIAL:  
HOUSING: PA9T WITH 33%GF, UL 94V-0, COLOR: BLACK.  
CONTACTS: BRASS.
- FINISH:  
CONTACTS: GOLD FLASH PLATED OVER  
1.27um [50u"] MIN. NICKEL PLATED ON ENTIRE CONTACT.
- RECOMMENDED PCB THICKNESS: 1.6mm.
- REFLOW SOLDER CAPABLE TO 260°C PER TYCO TEST SPEC. 109-201, CONDITION B.



1775372-1  
PART NUMBER

THIS DRAWING IS A CONTROLLED DOCUMENT.		DWN J. LEE 03JAN2007														
DIMENSIONS: MM		CHK S. HOU 03JAN2007														
TOLERANCES UNLESS OTHERWISE SPECIFIED:		APVD W.J. KE 03JAN2007	NAME 3.0mm BTX POWER, 20 POS, PLUG, R/A, DIP CONNECTOR													
<table border="0"> <tr><td>0 PLC</td><td>± -</td></tr> <tr><td>1 PLC</td><td>± 0.30</td></tr> <tr><td>2 PLC</td><td>± 0.20</td></tr> <tr><td>3 PLC</td><td>± -</td></tr> <tr><td>4 PLC</td><td>± -</td></tr> <tr><td>ANGLES</td><td>± 3'</td></tr> </table>		0 PLC	± -	1 PLC	± 0.30	2 PLC	± 0.20	3 PLC	± -	4 PLC	± -	ANGLES	± 3'	PRODUCT SPEC 108-57641	QUALIFICATION TEST REPORT	
0 PLC	± -															
1 PLC	± 0.30															
2 PLC	± 0.20															
3 PLC	± -															
4 PLC	± -															
ANGLES	± 3'															
MATERIAL SEE NOTE		FINISH SEE NOTE	501-57747	RESTRICTED TO												
		WEIGHT 2.80GRAMS	SIZE A3	CAGE CODE 00779												
		CUSTOMER DRAWING	DRAWING NO 1775372	REV B												
			SCALE -	SHEET 1 of 2												

4

3

2

1

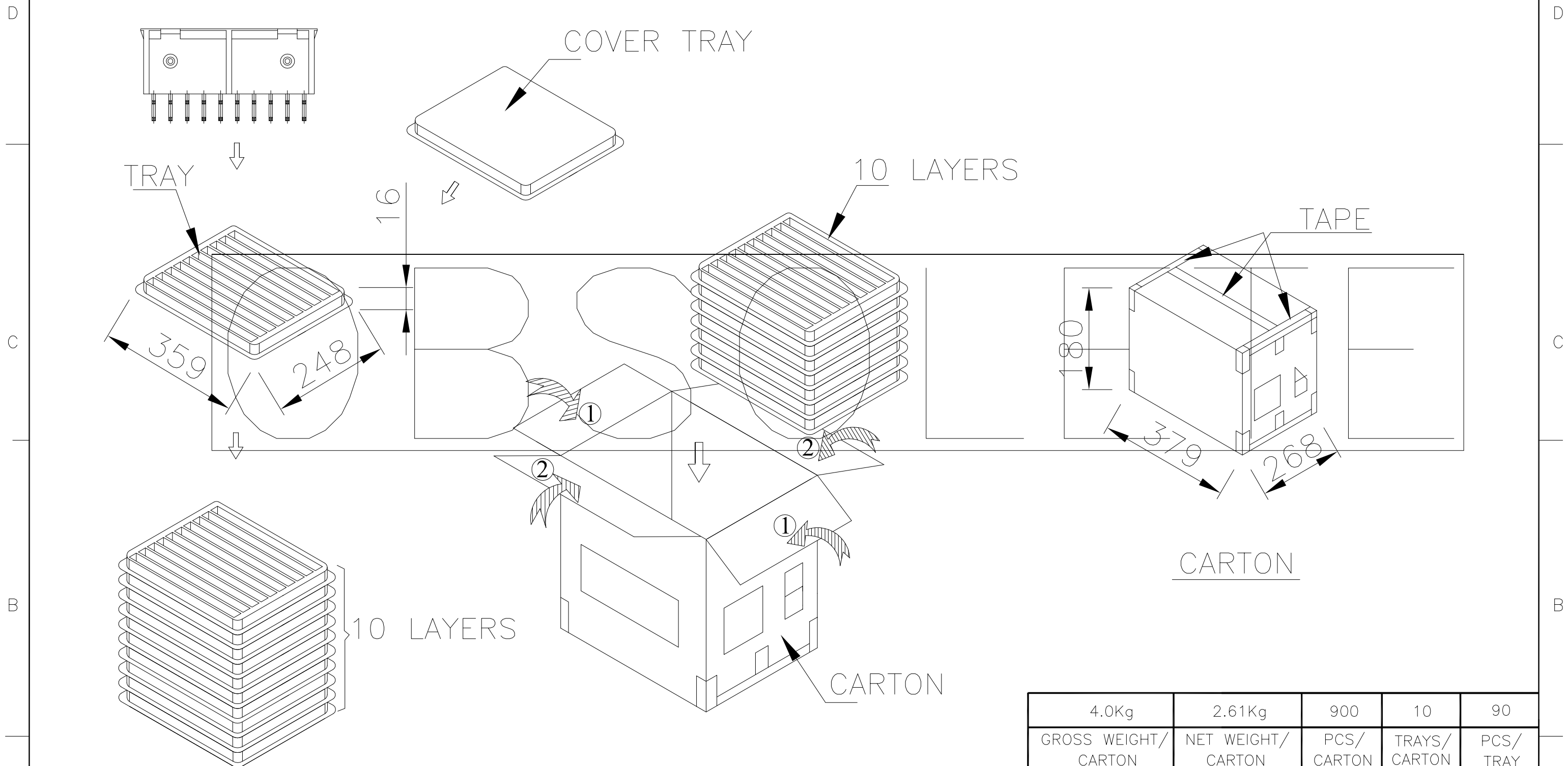
THIS DRAWING IS UNPUBLISHED.

RELEASED FOR PUBLICATION

---

© COPYRIGHT BY TYCO ELECTRONICS CORPORATION. ALL RIGHTS RESERVED.

LOC	DIST	REVISIONS				
P	LTR	DESCRIPTION	DATE	DWN	APVD	
DW	—	SEE SHEET 1.				



4.0Kg	2.61Kg	900	10	90
GROSS WEIGHT/ CARTON	NET WEIGHT/ CARTON	PCS/ CARTON	TRAYS/ CARTON	PCS/ TRAY

THIS DRAWING IS A CONTROLLED DOCUMENT.		DWN	J. LEE	03JAN2007	 TE CONNECTIVITY
DIMENSIONS: MM		CHK	S. HOU	03JAN2007	
		APVD	W.J. KE	03JAN2007	
TOLERANCES UNLESS OTHERWISE SPECIFIED:		NAME			
0 PLC ± - 1 PLC ± - 2 PLC ± - 3 PLC ± - 4 PLC ± - ANGLES ± -		PRODUCT SPEC			3.0mm BTX POWER, 20 POS, PLUG, R/A, DIP CONNECTOR
MATERIAL		APPLICATION SPEC			
FINISH		WEIGHT			RESTRICTED TO
		CUSTOMER DRAWING			SIZE: A3 CAGE CODE: 00779 DRAWING NO: C=1775372
		SCALE: —			SHEET: 2 of 2 REV: B

单击下面可查看定价，库存，交付和生命周期等信息

[>>TE Connectivity\(泰科\)](#)