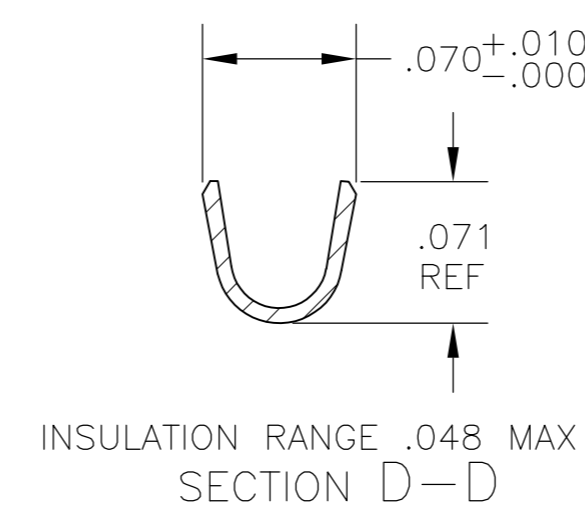
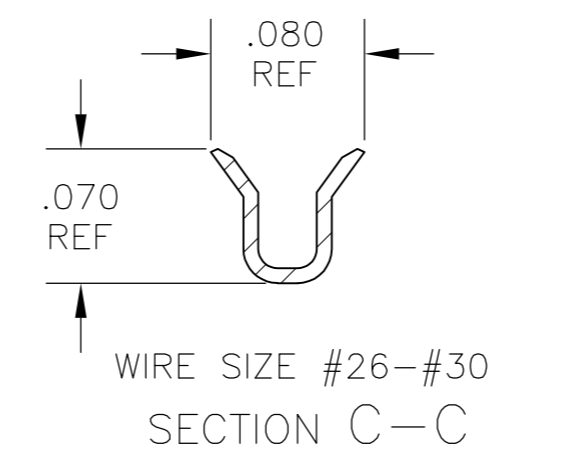
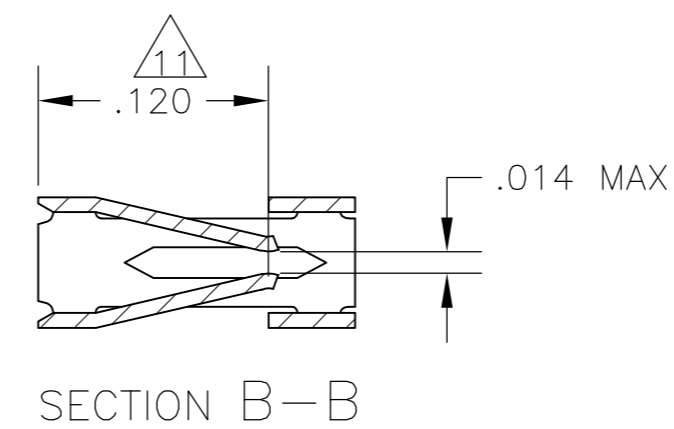
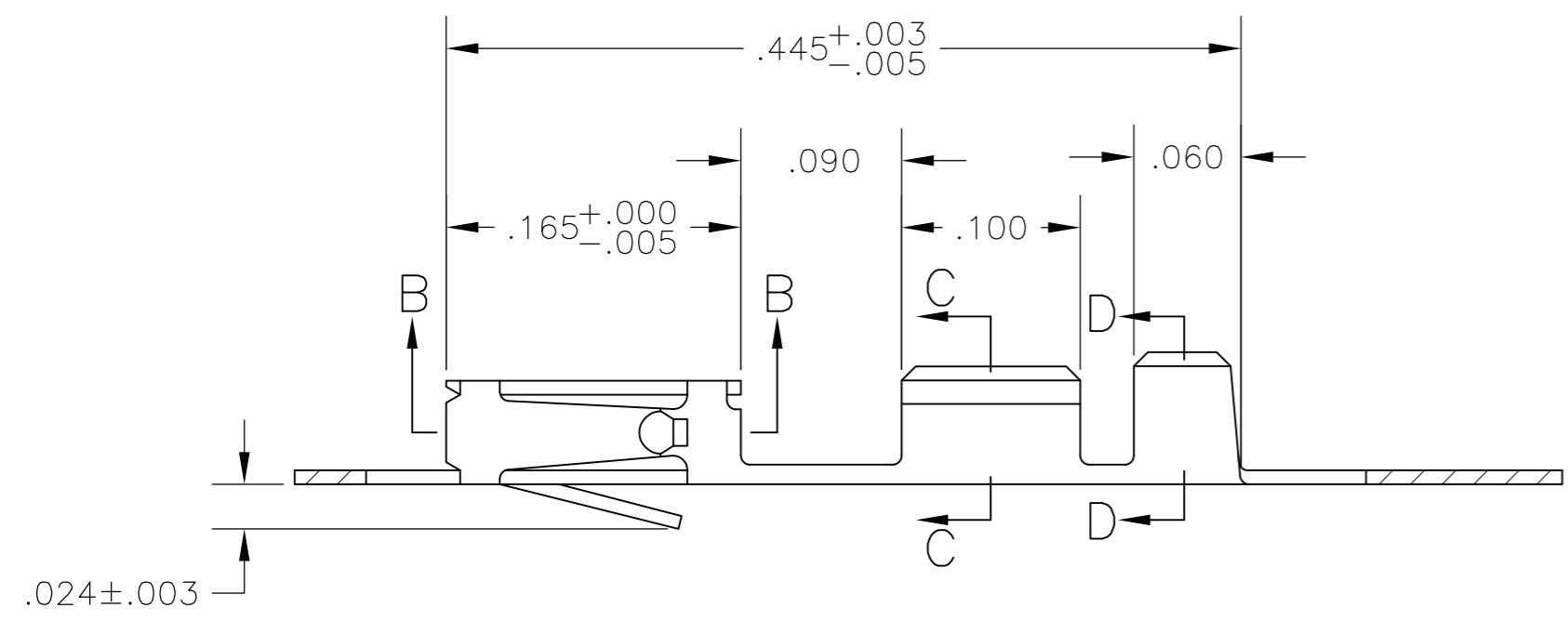
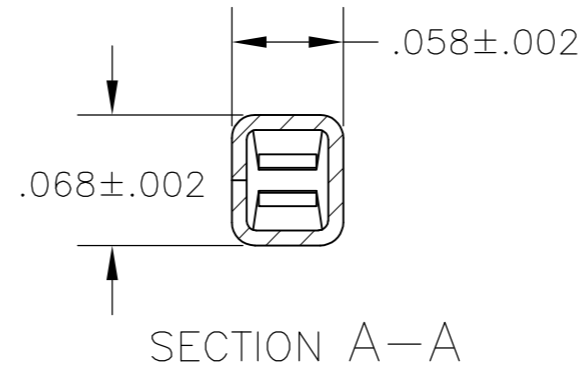
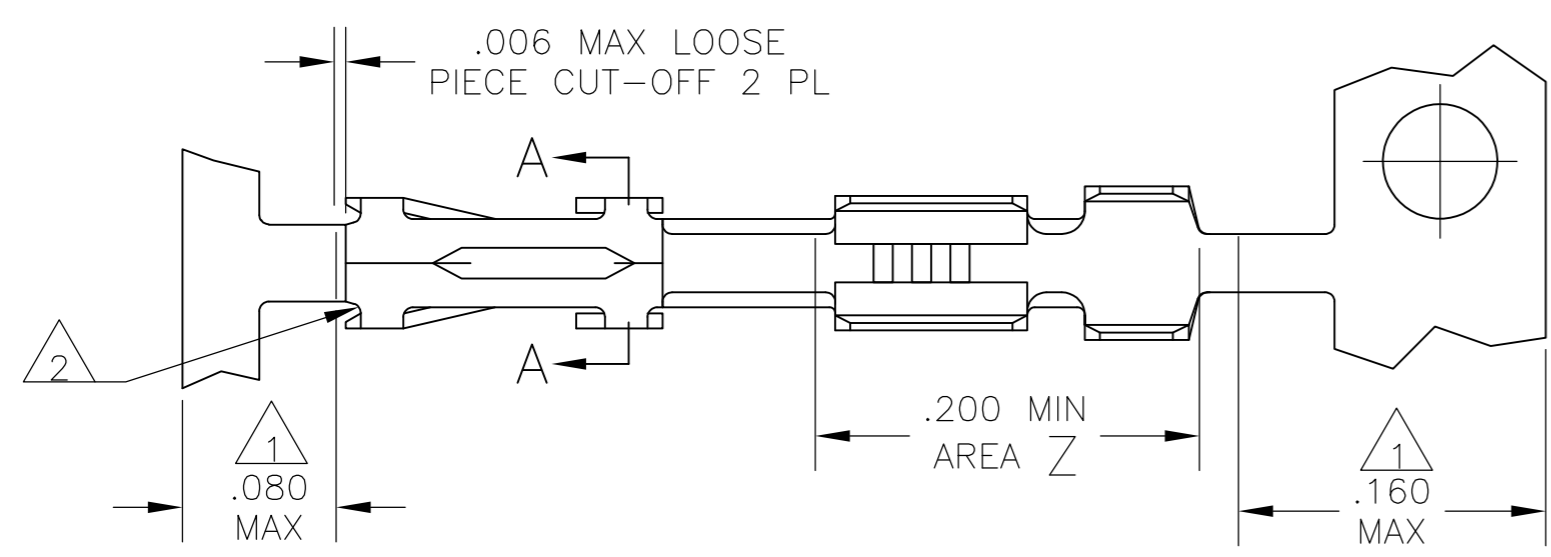


THIS DRAWING IS UNPUBLISHED. RELEASED FOR PUBLICATION
 © COPYRIGHT BY TYCO ELECTRONICS CORPORATION. ALL RIGHTS RESERVED.

LOC	DIST	REVISIONS			
P	LTR	DESCRIPTION	DATE	DWN	APVD
	V	ECO-05-007262	10JAN06	BSV	MM
	V1	REVISED PER ECO-09-020774	21AUG09	KK	AEG



17 OBSOLETE PARTS: OBSOLETE CIS STREAMLINING PER D.RENAUD/D.SINISI

- 1 GOLD PLATING IS NOT REQUIRED IN THIS AREA.
- 2 CUT-OUTS ON THE BOX ARE AT MANUFACTURERS OPTION.
- 3 THIS TERMINAL IS REELED FOR THE STANDARD APPLICATOR.
- 4 THIS TERMINAL IS REELED FOR THE MINI APPLICATOR.
- 5 .000030 GOLD ON THE CONTACT AREA, GOLD FLASH ON THE REMAINDER ALL OVER .000050 NICKEL.
- 6 .000015 GOLD ON THE CONTACT AREA, GOLD FLASH ON THE REMAINDER ALL OVER .000050 NICKEL.
- 7 .000100-.000200 BRIGHT TIN-LEAD OVER .000050 NICKEL.
- 8 SHEARED EDGES ARE PERMITTED TO BE UNPLATED.
- 9 .000015 GOLD ON THE CONTACT AREA, .000050 NICKEL ON THE REMAINDER.
- 10 .000050 GOLD ON THE CONTACT AREA, GOLD FLASH ON THE REMAINDER ALL OVER .000050 NICKEL.
- 11 POINT OF MEASUREMENT FOR PLATING THICKNESS (INSIDE BEAMS).
- 12 .000015 GOLD ON THE CONTACT AREA, .000100-.000200 BRIGHT TIN-LEAD ON AREA Z, ALL OVER .000050 NICKEL.
- 13 .000030 GOLD ON THE CONTACT AREA, .000100-.000200 BRIGHT TIN-LEAD ON AREA Z, ALL OVER .000050 NICKEL.
- 14 OBSOLETE PART NUMBERS.
- 15 SUPERSEDED BY 2-87522-2.
- 16 .000030 GOLD ON THE CONTACT AREA, .000100-.000200 MATTE TIN ON AREA Z, ALL OVER .000050 NICKEL.

REMARKS	FINISH	LOOSE PIECE PART NUMBER	PART NUMBER
4	8 16	7-87522-3	7-87522-2
4	8 13	2-87522-3	2-87522-2
4	8 12 14	2-87522-0	15 1-87522-9
4	10	1-87522-7	14 1-87522-6
3	10 17	1-87522-7	14 1-87522-5
4	8 9 14	1-87522-4	14 1-87522-3
3	7	87522-6	1-87522-0
3	6	87522-7	87522-9
3	5	87522-3	14 87522-8
4	7 14	87522-6	14 87522-5
4	6 14	87522-7	14 87522-4
4	5 14	87522-3	14 87522-2

THIS DRAWING IS A CONTROLLED DOCUMENT.

DWN L.D.RINGLEY 1-6-86
 CHK J.L.GESFORD 1-6-86
 APVD J.L.GESFORD 1-6-86

TOLERANCES UNLESS OTHERWISE SPECIFIED:
 0 PLC ± -
 1 PLC ± -
 2 PLC ± -
 3 PLC ± .005
 4 PLC ± -
 ANGLES ± -
 FINISH SEE TABLE

108-25,020
 APPLICATION SPEC
 114-25,003
 WEIGHT -
 CUSTOMER DRAWING

Tyco Electronics Tyco Electronics Corporation
 Harrisburg, Pa 17105-3608

NAME CONTACT, MOD IV, RECEPTACLE, CRIMP SNAP-IN

SIZE A2 CAGE CODE 00779 DRAWING NO. C=87522 RESTRICTED TO -
 SCALE 10:1 SHEET 1 OF 1 REV V1

单击下面可查看定价，库存，交付和生命周期等信息

[>>TE Connectivity\(泰科\)](#)