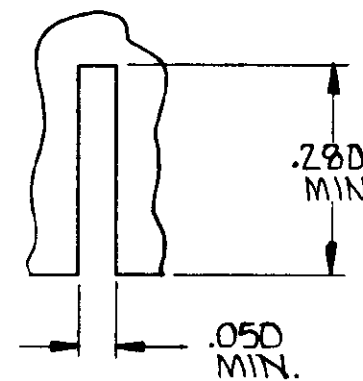
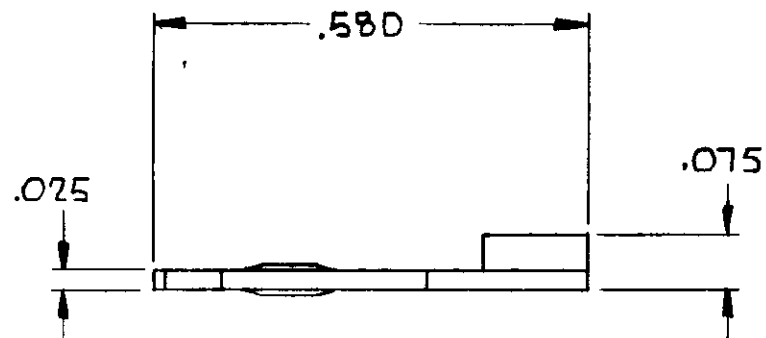
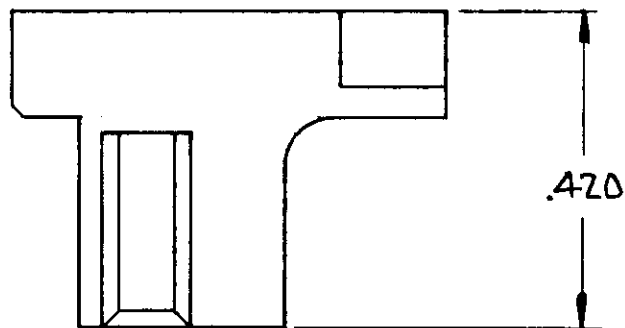


© 1970 BY AMP INCORPORATED. ALL RIGHTS RESERVED. AMP PRODUCTS COVERED BY PATENTS AND/OR PATENTS PENDING.

583661-1 I. AS SHOWN

REVISIONS				
ZONE	LTR	DESCRIPTION	DATE	APPROVED
	0	RELEASED, WAS CP 5125-68	10-13-70	NH.



SUGGESTED CUTOUT IN P.C. BOARD FOR KEYING PLUG

UNLESS OTHERWISE SPECIFIED DIMENSIONS ARE IN INCHES TOLERANCES ON: DECIMALS ± .005 ANGLES ± #	CONTRACT NO.	AMP AMP INCORPORATED HARRISBURG, PENNSYLVANIA		
	DR. <i>W. H. ...</i> 10-13-70			
	MATERIAL GLASS FILLED NYLON COLOR - BLACK	CHK. <i>W. H. ...</i> 10-13-70	NAME KEYING PLUG, DUO TYNE FLAG HOUSING	
	APPD. <i>J. Kimpfner</i> 10-14-70	REC. <i>R. ...</i> 10-14-70	SIZE B	CODE IDENT NO. 00779
DSGN APPD.	OTHER APPD.	SCALE	SHEET	

LOC AD

PRINT DIST 0/4

单击下面可查看定价，库存，交付和生命周期等信息

[>>TE Connectivity\(泰科\)](#)