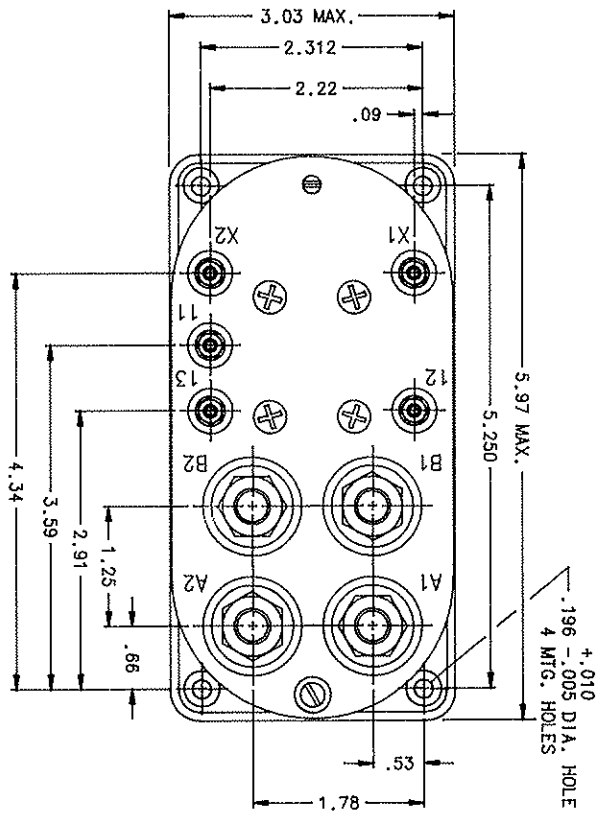


REVISIONS		DESCRIPTION	DATE	APPROVED
REV. C	21154	REDRAWN, ADDED 2.35 & .18/.31 DIM'S	1-16-91	ML
REV. H	24064	ADDED ITEMS 12 AND 13	6/29/93	



CONSTRUCTION

MAIN CONTACTS
CONFIGURATION
VOLTAGE (NOMINAL)
CURRENT: RES.
CARRY ONLY

RUPTURE

AUX. CONTACTS
CONFIGURATION
VOLTAGE
CURRENT: RES.
IND.

COIL DATA
DUTY CYCLE

COIL VOLTAGE MAX.
PICKUP VOLTAGE HOT
DROPOUT VOLTAGE
COIL RES.

ENVIRONMENTAL DATA
AMBIENT TEMP

LIFE ELECTRICAL
LIFE MECHANICAL
WEIGHT

HERMETIC SEAL

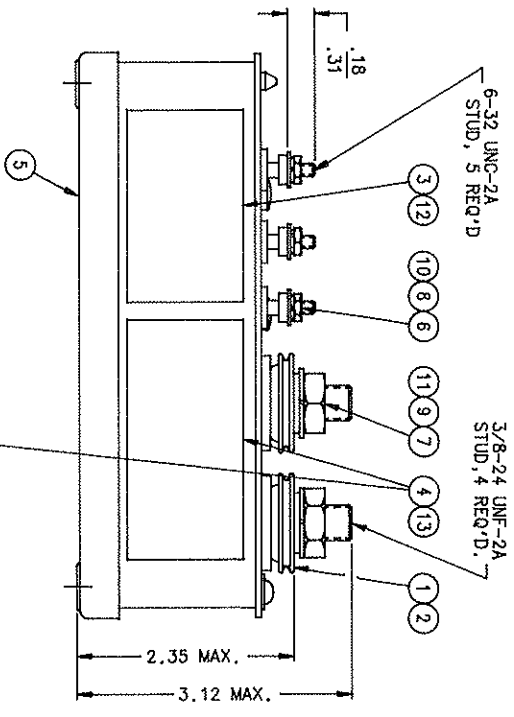
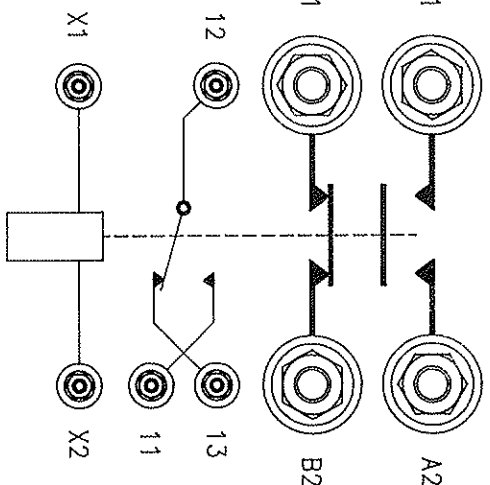
SPDT SIDESTABLE
30 VDC
300 AMP
1500 AMP INRUSH
1000 AMP FOR 30 SEC.
3000 AMP

SPDT
28 VDC
5 AMP
5 AMP

INTERMITTANT
3 MINUTES MAX.
30 VDC
20 VDC MAX.

0.5 - 5.5
8.8 OHM ± 20% AT 25°C

- 55°C TO + 120°C
50,000 CYCLES MIN.
100,000 CYCLES MIN.
2 LBS. 14 OZ.



- NOTES:
- THIS UNIT DESIGNED TO THE BASIC REQUIREMENTS OF MIL-R-6106E EXCEPT AS NOTED.
 - QUALIFICATION TESTING NOT COMPLETED.

ITEM NO.	QTY	PART OR IDENTIFYING NO.	DESCRIPTION	MATERIAL OR NOTE
13	1	39529-017	OVERLAY	
12	1	39529-001	OVERLAY	
11	4	51807-084	WASHER - LOCK NO. 3/8	BRONZE
10	5	51806-014	WASHER - LOCK NO. 6 SPLIT	BRONZE
9	4	51704-024	WASHER, 5/8 X 25/64 X .062	BRASS
8	5	51702-204	WASHER, 3/8 X 9/64 X .031	BRASS
7	4	50407-164	NUT - 3/8-24 X 5/8 X 7/32 HEX	BRASS
6	5	50406-034	NUT, 6-32 X 1/4 X 5/64 HEX	BRASS
5	1	39010-020	CONTACTOR ASSEMBLY - PRIMARY	
4	1	32803-001	PLATE - HEADER DIAGRAM	
3	1	16043-074	PLATE NAME	
2	4	13121-001	TERMINAL INSULATING CUP	
1	4	13120-001	LOG SEAT	

BC-2639		HARTMAN ELECTRICAL MANUFACTURING MANSFIELD, OHIO	
UNLESS OTHERWISE SPECIFIED DIMENSIONS ARE IN INCHES TOLERANCES ARE		CONTACTOR - HERMETICALLY SEALED, S.P.D.T., 300 AMP	
2 PL DEC. 3 PR. DEC. ANGLE ES.	.06	.010	± 1°
DR BY	LOB	11/5/93	
CHK BY	WJ	11/5/93	
ENGR	DW	11/5/93	
MFG	DA	11/5/93	
RELEASE			
CONTR. NO.			
GOVT APPV			
SIZE	CODE IDENT	DWG NO.	
C	74063	AH-965H	
SCALE	NONE		
			SHEET

CUSTOMER CONTROLLED
DRAWING
BELL

单击下面可查看定价，库存，交付和生命周期等信息

[>>TE Connectivity\(泰科\)](#)