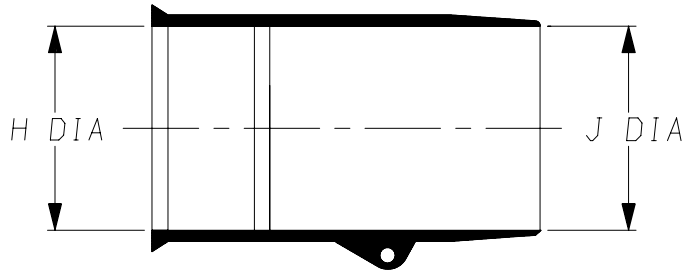
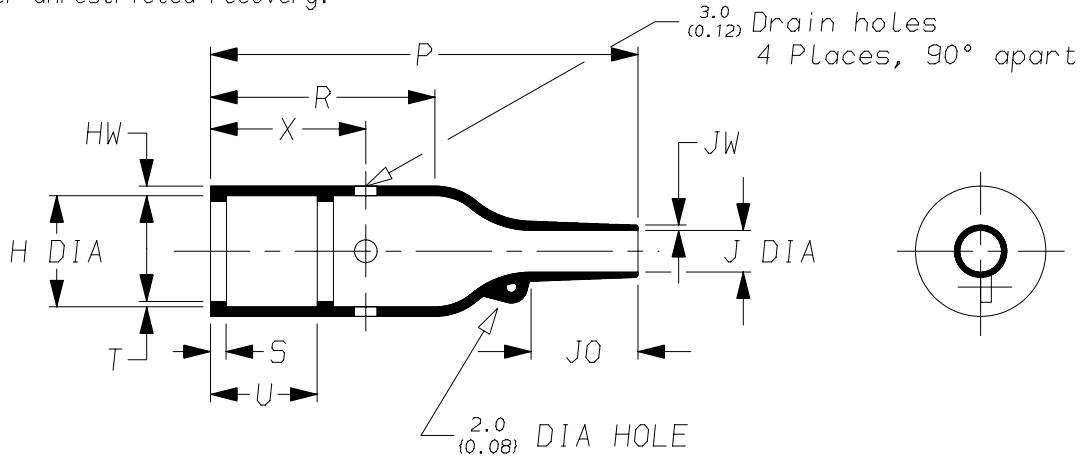


a) Part as supplied.

202K1\*\*-\*-13



b) Part after unrestricted recovery.



DIMENSIONS in millimetres  
(in inches, for reference)

Part No.	H		J		P	R	S	T	U	J0	HW	JW	X
	Min a	Max b	Min a	Max b	±10% b	±10% b	±10% b	±10% b	±10% b	±10% b	±20% b	±20% b	±20% b
202K121-*-13	24 {0.94}	10.4 {0.41}	24 {0.94}	5.6 {0.22}	26 {1.02}	9 {0.35}	3.0 {0.12}	1.0 {0.04}	①	8.5 {0.33}	1.6 {0.06}	0.5 {0.02}	12 {0.47}
202K132-*-13	30 {1.18}	14.2 {0.56}	30 {1.18}	5.9 {0.23}	43 {1.69}	20 {0.79}	3.0 {0.12}	1.0 {0.04}	①	11.5 {0.45}	1.8 {0.07}	1.0 {0.04}	12 {0.47}
202K142-*-13	31 {1.22}	18.0 {0.71}	31 {1.22}	7.1 {0.28}	47 {1.85}	15 {0.59}	3.0 {0.12}	1.0 {0.04}	①	17.0 {0.67}	1.8 {0.07}	1.0 {0.04}	12 {0.47}
202K153-*-13	36 {1.42}	22.4 {0.88}	36 {1.42}	8.4 {0.33}	60 {2.36}	22 {0.87}	3.0 {0.12}	1.0 {0.04}	①	19.5 {0.77}	2.0 {0.08}	1.0 {0.04}	12 {0.47}
202K163-*-13	42 {1.65}	28.2 {1.11}	42 {1.65}	9.9 {0.39}	79 {3.11}	41 {1.61}	3.0 {0.12}	1.7 {0.07}	20 {0.79}	21.0 {0.83}	2.2 {0.09}	1.0 {0.04}	32 {1.26}
202K174-*-13	60 {2.36}	35.1 {1.38}	60 {2.36}	15.7 {0.62}	110 {4.33}	52 {2.05}	3.0 {0.12}	1.7 {0.07}	20 {0.79}	39.0 {1.54}	3.2 {0.13}	1.5 {0.06}	32 {1.26}
202K185-*-13	66 {2.60}	44.5 {1.75}	66 {2.60}	16.8 {0.66}	150 {5.91}	70 {2.76}	3.0 {0.12}	2.0 {0.08}	20 {0.79}	51.5 {2.03}	3.8 {0.15}	2.0 {0.08}	32 {1.26}

This is a trimmed variant with Potting Ports  
Modified dimensions are shown thus: - #

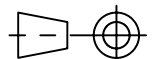
Copyright (!)

The copyright in this drawing is the property of Tyco Electronics UK Ltd. The drawing is issued on the condition that it is not copied, reproduced or disclosed to a third party, either in whole or in part without the prior written consent of Tyco Electronics UK Ltd.

Drawn A.LILLEY. Checked Issue 2 Date April 2008

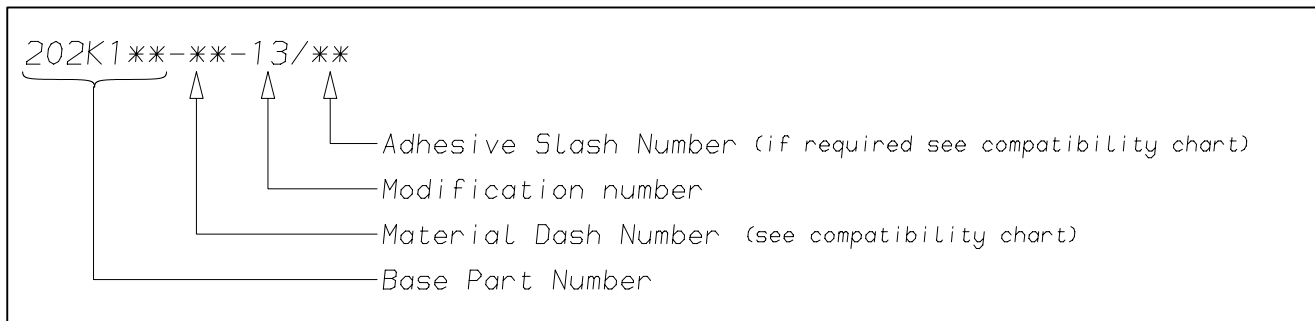
Conforms to ISO Recommendations  
3rd Angle Projection  
Not to Scale

Approval Design MKTG. Tech.



<b>Raychem</b>		<b>Specification Control Drawing</b>	Part Number <b>202K1**-**-13 Issue 2</b>
Iss.	Date	E.C.R. No.	Details of Change
2	April 2008	****	SCD 202K142-*-13 extended to include full range

### (Ordering Information)



### (COMPATIBILITY CHART)

Material Dash Number	Material Description	SPEC Number	Coating Slash Number
-3	POLYOLEFIN, SEMI-RIGID	RT-301	/42, /86, /180
-4	POLYOLEFIN, FLEXIBLE	RT-1304	/42, /86, /180
-25	ELASTOMER, FLUID RESISTANT	RW-2070	/42, /86, /225
-130	POLYOLEFIN, COMMERCIAL FLEXIBLE	RW-2008	/42

### NOTES

- ① Dimension U does not apply on sizes 202K121 thru 202K153.
- ② If eyelet clip (000W212) is required with part then add C5-1858 to description (i.e. 202K132-3-13-C5-1858-0).
- ③ As supplied dimensions are for uncoated parts, when coating is added entry diameters will reduce by 1.5mm Max.

Tyco Electronics UK Ltd. Faraday Road, Swindon, Wiltshire, SN3 5HH England Telephone: (01793) 528171 Fax: 572516	Tyco Electronics Corporation 300, Constitution Drive, Menlo Park, CA 94025 USA Telephone (650) 361-3860 Fax: (650) 361-5579
Cage Code K1010	Cage Code 06090

单击下面可查看定价，库存，交付和生命周期等信息

[>>TE Connectivity\(泰科\)](#)