

THIS DRAWING IS UNPUBLISHED. RELEASED FOR PUBLICATION
 © COPYRIGHT - By - ALL RIGHTS RESERVED.

LOC		DIST		REVISIONS			
P	LTR	DESCRIPTION		DATE	DWN	APVD	
	B	ECO-15-003966		3/16/15	RT	EW	

7. SEE DRAWING C-1648128 FOR MATING SOCKET CONNECTOR.
6. ITEMS PROVIDED TO THIS SPECIFICATION TO BE PERMANENTLY IDENTIFIED PER THE FOLLOWING IDENTIFIER: WEEK YEAR
- TYCO PART NUMBER DATE CODE (e.g. 0625)
 XXXXXXXX-X XXXX
5. ALL DIMENSIONS SHOWN ACROSS A CENTERLINE (⊘) SHALL BE CENTRALIZED WITHIN THE TOLERANCE INDICATED FOR THAT DIMENSION.
4. A REFERENCE DIMENSION (.XXX) IS WITHOUT TOLERANCE AND USED FOR INFORMATION PURPOSE ONLY.
- ③ RECOMMENDED MOUNTING HARDWARE: TO BE ORDERED SEPARATELY.
- FOR PCB MOUNTING, USE COMMERCIALY AVAILABLE SCREW AND WASHER (IF REQUIRED).
2. MATERIALS:
- HOUSING: THERMOPLASTIC, GLASS REINFORCED, COLOR-BLACK UL94V-0 FLAMMABILITY RATED.
 - RETENTION CLIP: COPPER ALLOY OR STAINLESS STEEL
1. PART NUMBER CHANGES AND OR DESIGN CHANGES AFFECTING ITEM INTERCHANGEABILITY REQUIRE PRIOR ELCON APPROVAL AND AUTHORIZATION BY REVISION TO THIS DRAWING.

NOTES: UNLESS OTHERWISE SPECIFIED

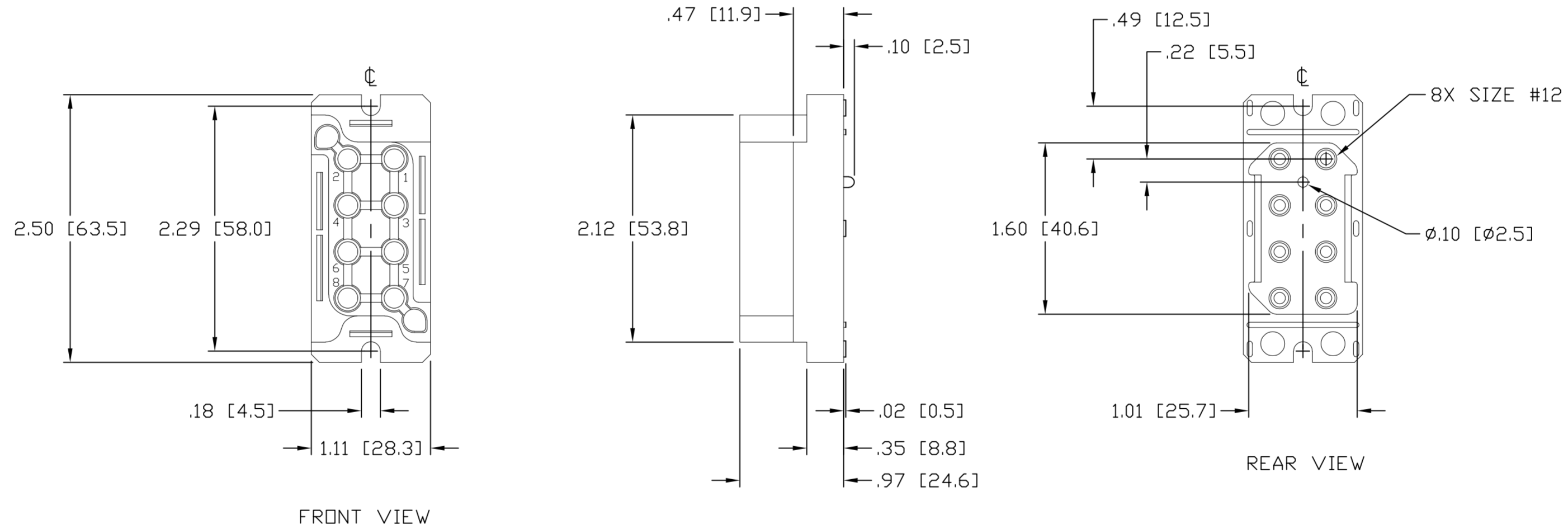
1648127-1	AS SHOWN
PART NUMBER	DESCRIPTION

THIS DRAWING IS A CONTROLLED DOCUMENT.		DWN	03/18/06	TE Connectivity	
		CHK	HA NGUYEN		
DIMENSIONS: INCHES 		TOLERANCES UNLESS OTHERWISE SPECIFIED: 0 PLC ± - 1 PLC ± - 2 PLC ± .010 (.25) 3 PLC ± .02 (.3) 4 PLC ± - ANGLES ± .5°		NAME: STEVE FLICKINGER PRODUCT SPEC: - APPLICATION SPEC: -	
MATERIAL: -		FINISH: -		SIZE: A2	CAGE CODE: 00779
		WEIGHT: -		DRAWING NO: C-1648127	
CUSTOMER DRAWING				SCALE: 1:1	SHEET: 1 of 3
				RESTRICTED TO: -	REV: B

1648127

THIS DRAWING IS UNPUBLISHED. RELEASED FOR PUBLICATION
 © COPYRIGHT - By - ALL RIGHTS RESERVED.

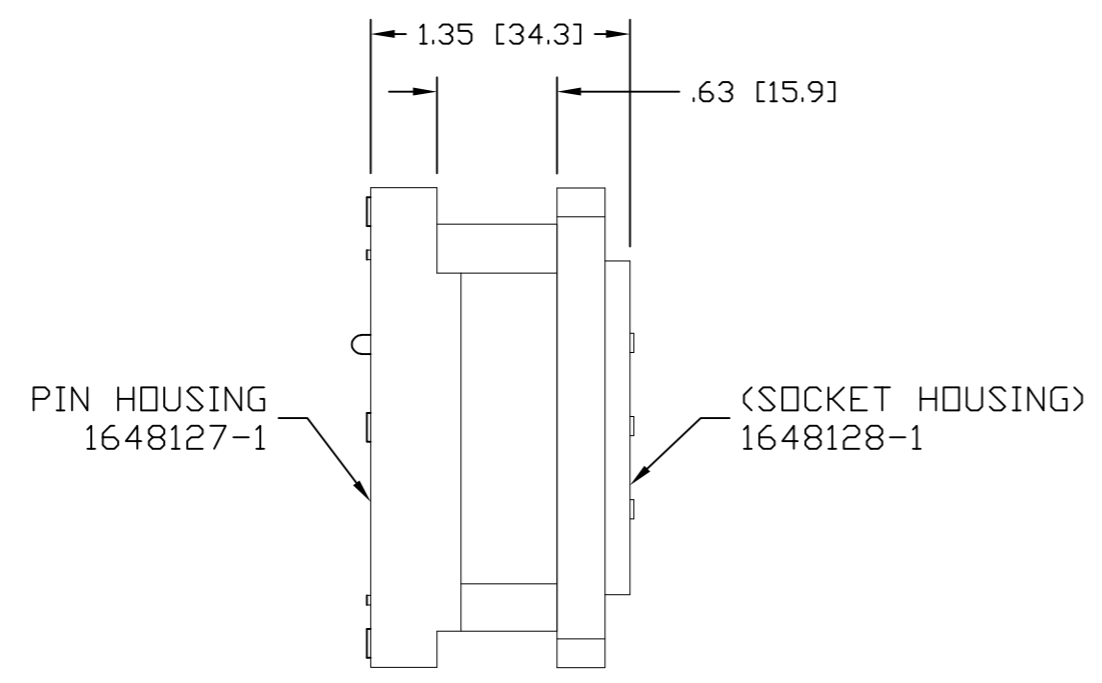
LOC		DIST		REVISIONS			
P	LTR	DESCRIPTION	DATE	DWN	APVD		
-	-	SEE SHEET 1	-	-	-		



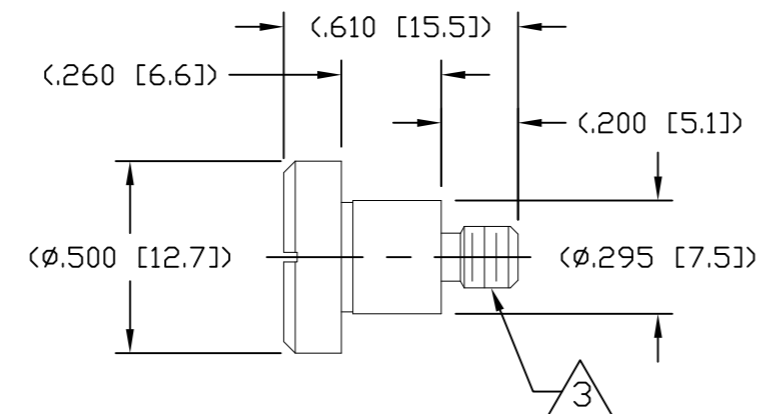
THIS DRAWING IS A CONTROLLED DOCUMENT.		DWN HA NGUYEN 03/18/06	TE Connectivity	
DIMENSIONS: INCHES		CHK -		
TOLERANCES UNLESS OTHERWISE SPECIFIED:		APVD STEVE FLICKINGER 03/18/06	NAME CONNECTOR, PIN HOUSING, SIZE 8X #12 HV8P DRAWER	
 0 PLC ± - 1 PLC ± - 2 PLC ± .010 3 PLC ± .02 4 PLC ± - ANGLES ± .5°		PRODUCT SPEC -	SIZE A2	CAGE CODE 00779
MATERIAL -		FINISH -	DRAWING NO C=1648127	RESTRICTED TO -
CUSTOMER DRAWING			SCALE 1:1	SHEET 2 of 3
			REV B	

THIS DRAWING IS UNPUBLISHED. RELEASED FOR PUBLICATION
 © COPYRIGHT - By - ALL RIGHTS RESERVED.

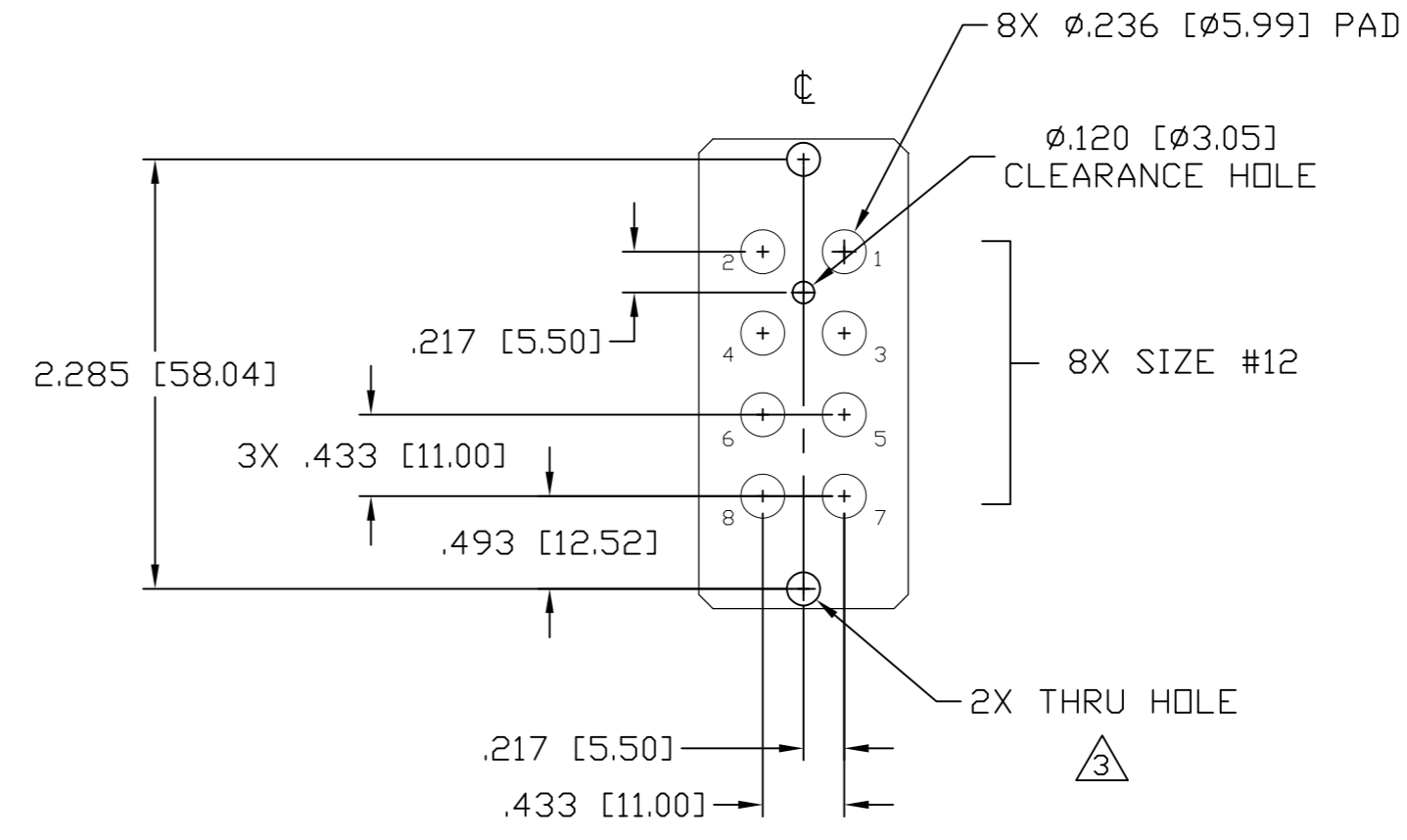
LOC		DIST		REVISIONS			
P	LTR	DESCRIPTION	DATE	DWN	APVD		
-	-	SEE SHEET 1	-	-	-		



MATED CONDITION



SHOULDER SCREW
 SCALE 2:1
 SHOWN FOR REFERENCE ONLY



RECOMMENDED CONTACT LAYOUT
 AS VIEWED FROM CONNECTOR MOUNTING SIDE
 (FRONT VIEW)

THIS DRAWING IS A CONTROLLED DOCUMENT.		DWN HA NGUYEN 03/18/06	TE Connectivity				
DIMENSIONS: INCHES		CHK -					
TOLERANCES UNLESS OTHERWISE SPECIFIED:		APVD STEVE FLICKINGER 03/18/06	NAME CONNECTOR, PIN HOUSING, SIZE 8X #12 HV8P DRAWER				
0 PLC ± - 1 PLC ± - 2 PLC ± .010 3 PLC ± .02 4 PLC ± - ANGLES ± .5°		PRODUCT SPEC -	SIZE A2	CAGE CODE 00779	DRAWING NO C=1648127	RESTRICTED TO -	
MATERIAL -		FINISH -	WEIGHT -	SCALE 1:1		SHEET 3 OF 3	REV B
CUSTOMER DRAWING							

1648127

单击下面可查看定价，库存，交付和生命周期等信息

[>>TE Connectivity\(泰科\)](#)