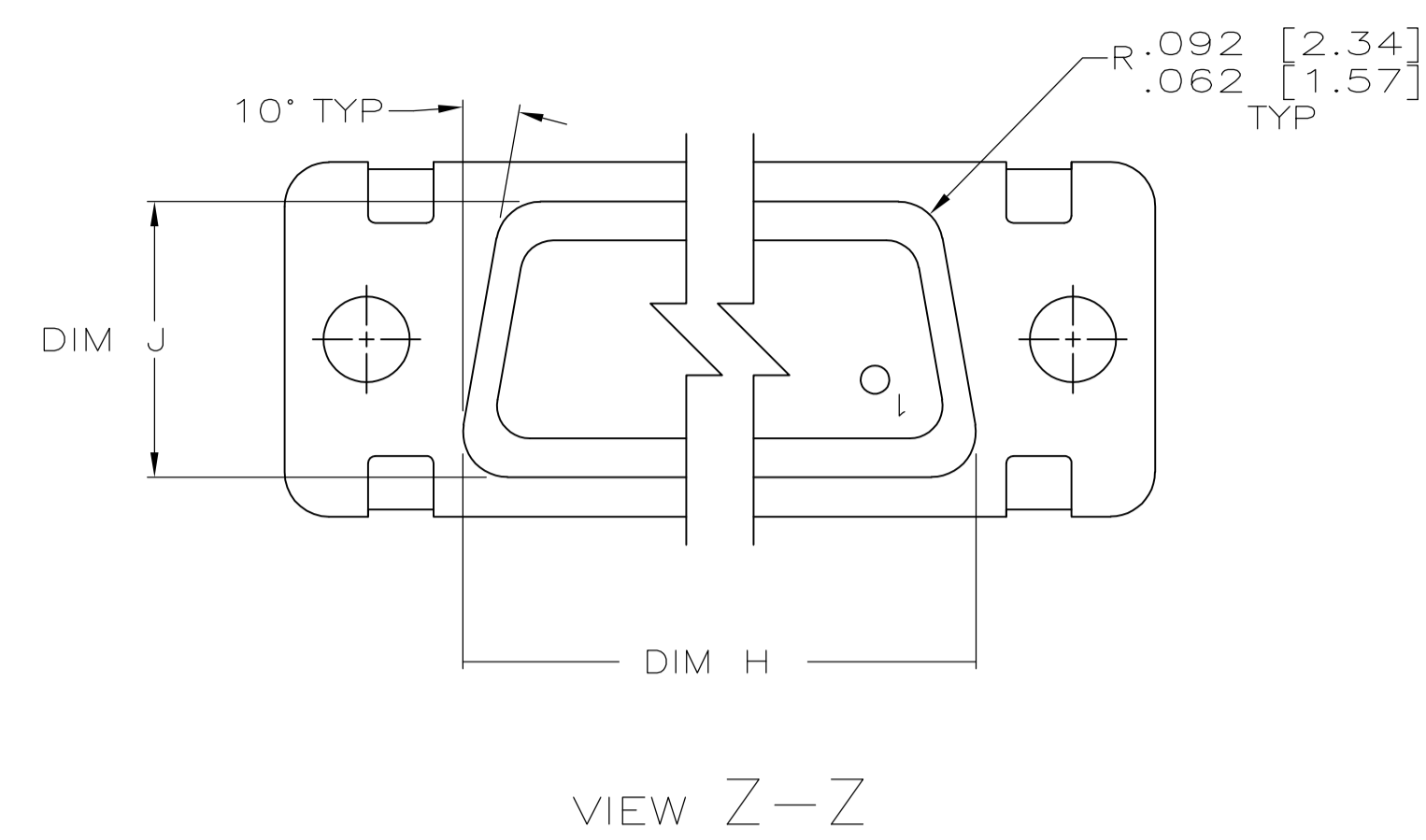
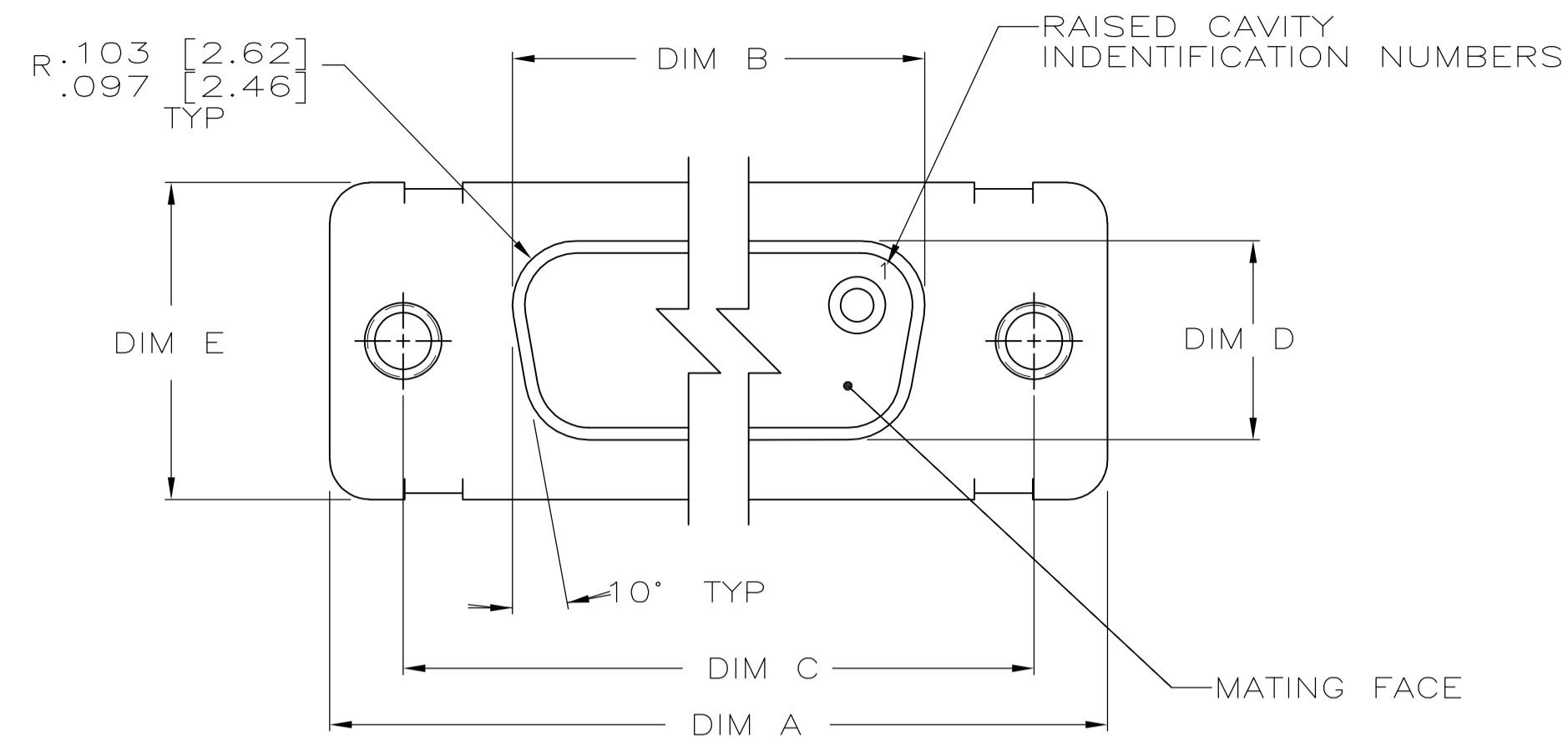
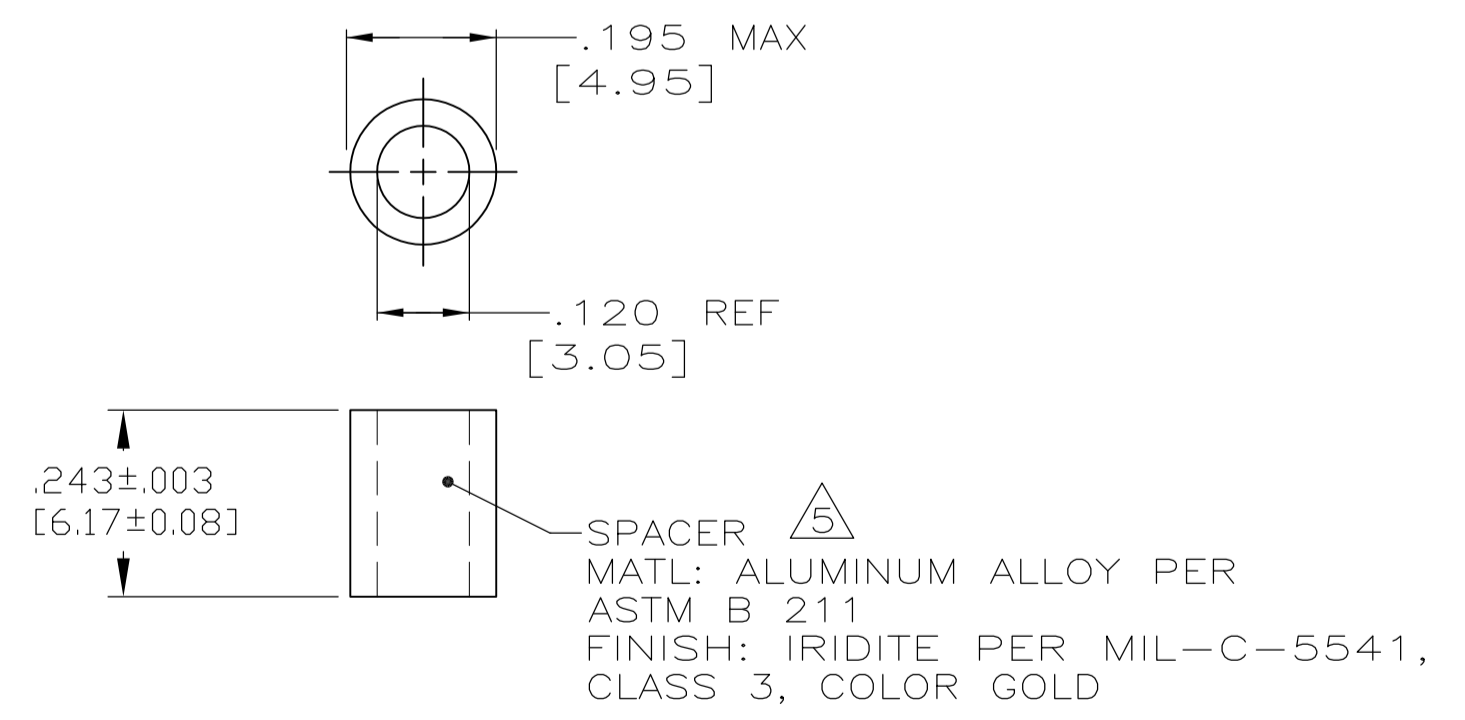
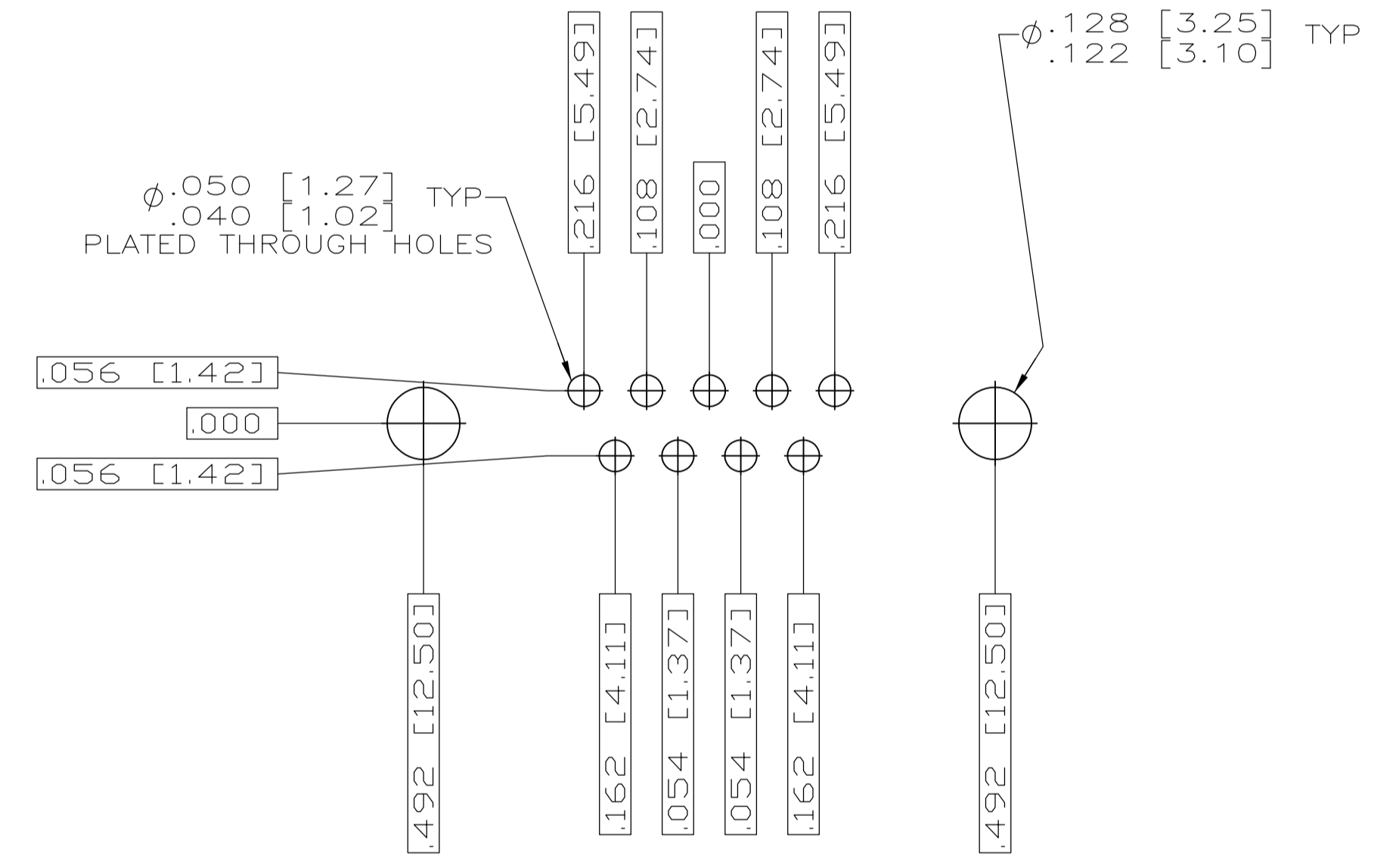
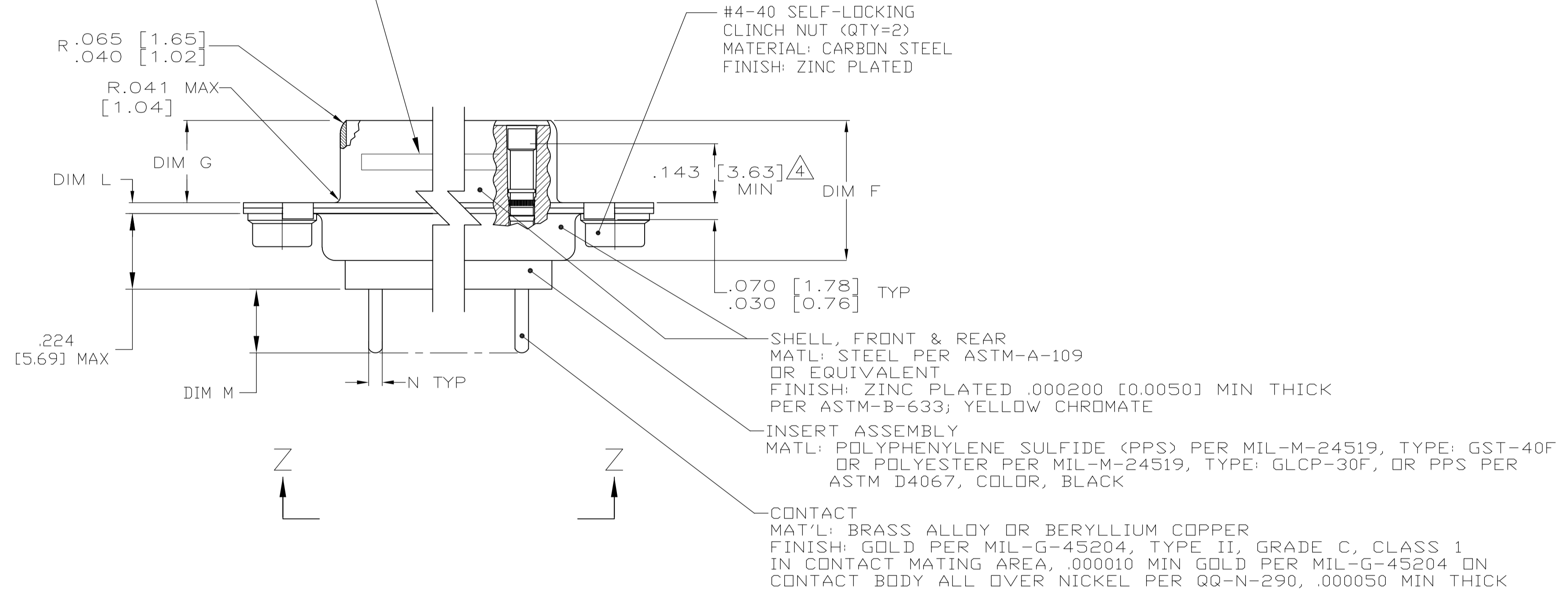


LOC		DIST		REVISIONS			
DF	DO	REV	DATE	DESCRIPTION	DATE	OWN	APVD
A	RELEASED		7-28-08			CT	RL



- ⚠ FOR RECOMMENDED P.C. BOARD LAYOUT. TRUE POSITION TOLERANCE FOR P.C. BOARD LAYOUT IS .010 [0.25] AT MAX MATERIAL CONDITION. SUGGESTED BOARD THICKNESS IS .094 [2.39]
- 2. THE CONNECTORS DESCRIBED IN THIS DOCUMENT WILL MATE WITH ANY PLUG CONNECTOR WITH THE SAME INSERT ARRANGEMENT.
- ⚠ MARKED WITH .047 [1.19]-.062 [1.57] HIGH CHARACTERS. FAR SIDE REFERS TO THE WIDE SIDE OF THE KEYSTONE. NEAR SIDE REFERS TO THE NARROW SIDE OF THE KEYSTONE. IF THE FRONT SHELL IS TOO SMALL FOR MFG NAME, BRAND NAME OR LOGO, MFG PART NUMBER AND DATE CODE, THEN SPLIT AS FOLLOWS:
 - A. MFG PART NUMBER ON REAR SHELL, NEAR SIDE.
 - B. MFG NAME, BRAND NAME OR LOGO AND DATE CODE ON FRONT SHELL, NEAR SIDE.
- ⚠ POINT OF ELECTRICAL ENGAGEMENT - AS MEASURED WITH A .0390 [0.991]-.0393 [0.998] DIA SQUARE ENDED TEST PIN.
- ⚠ SPACERS (QTY 2) ARE SUPPLIED WITH CONNECTORS (NOT ATTACHED TO THE CONNECTOR).

MANUFACTURERS NAME, BRAND NAME OR LOGO, MFG. PART NUMBER AND DATE CODE MARKED ON FAR SIDE



.033 [0.84]	.176 [4.47]	.040 [1.02]	.432 [10.97]	.769 [19.53]	.248 [6.30]	.439 [11.15]	.509 [12.93]	.316 [8.03]	.989 [25.12]	.648 [16.46]	1.228 [31.19]	MS18273-1	9	1	1996840-1
.027 [0.69]	.136 [3.45]	.020 [0.51]	.412 [10.46]	.749 [19.02]	.238 [6.05]	.419 [10.64]	.479 [12.17]	.306 [7.77]	.979 [24.87]	.638 [16.21]	1.198 [30.43]	INSERT ARRANGEMENT	NO OF POS	SHELL SIZE	PART NUMBER
N	M	L	J	H	G	F	E	D	C	B	A				

THIS DRAWING IS A CONTROLLED DOCUMENT.

DIMENSIONS: DIMENSIONS IN INCHES [mm]

TOLERANCES UNLESS OTHERWISE SPECIFIED:

0 PLC	±	-
1 PLC	±	-
2 PLC	±	-
3 PLC	±	-
4 PLC	±	-
ANGLES	±	-

MATERIAL: SEE CALLOUTS

FINISH: SEE CALLOUTS

WEIGHT: -

CUSTOMER DRAWING

SCALE: 4:1

SHEET: 1 OF 1

REV: A

THIS DRAWING IS A CONTROLLED DOCUMENT. DWN: C.C.THOMAS 7-28-08, CHK: R.L. THOMAS 7-28-08, APVD: R.L. THOMAS 7-28-08

Tyco Electronics Corporation, Harrisburg, PA 17105-3608

AMPLIMITE RECEPTACLE ASSY, LOW PROFILE SIZE 20 POSTED P.C. BOARD CONTACTS SERIES 109, SIZE 1

SIZE: A1, CAGE CODE: 00779, DRAWING NO: 1996840

单击下面可查看定价，库存，交付和生命周期等信息

[>>TE Connectivity\(泰科\)](#)